

CLICK BELOW TO JUMP TO EACH FLOOR PLAN 

[CARR](#) 3113 Lawton Rd

[PORTERFIELD](#) 3191 Maguire Blvd

[TEDDER](#) 988 Woodcock Rd

[HOLLISTER](#) 3535 Lawton Rd

[SARATOGA](#) 3165 McCrory Pl

[YORKTOWN](#) 657 Maguire Blvd

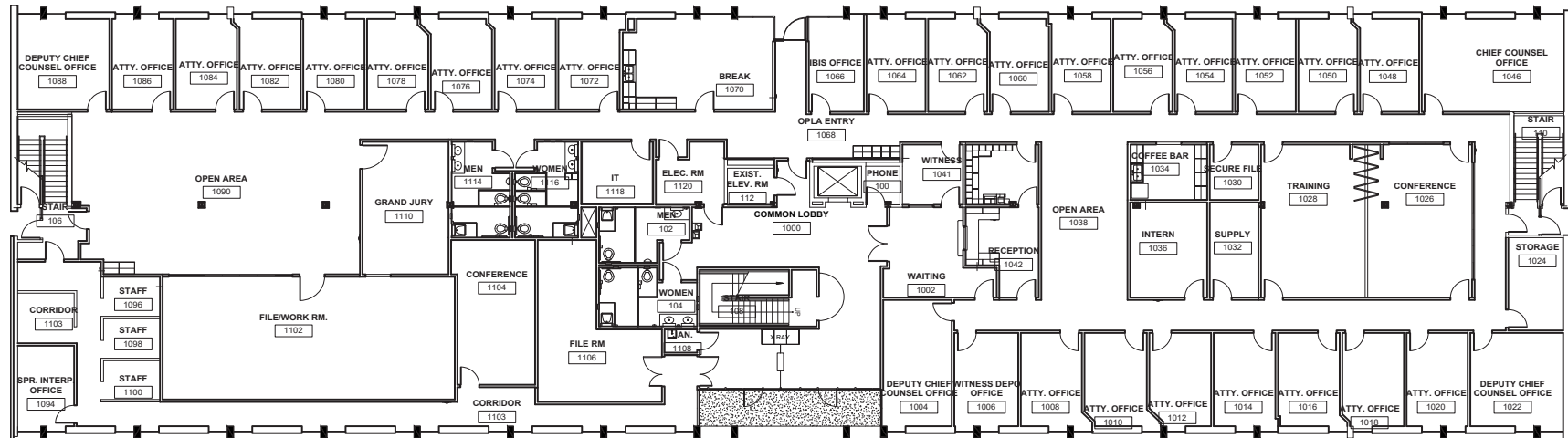
[LANGLEY](#) 3751 Maguire Blvd

[ST. PAUL](#) 1080 Woodcock Rd

[LEXINGTON](#) 3319 Maguire Blvd

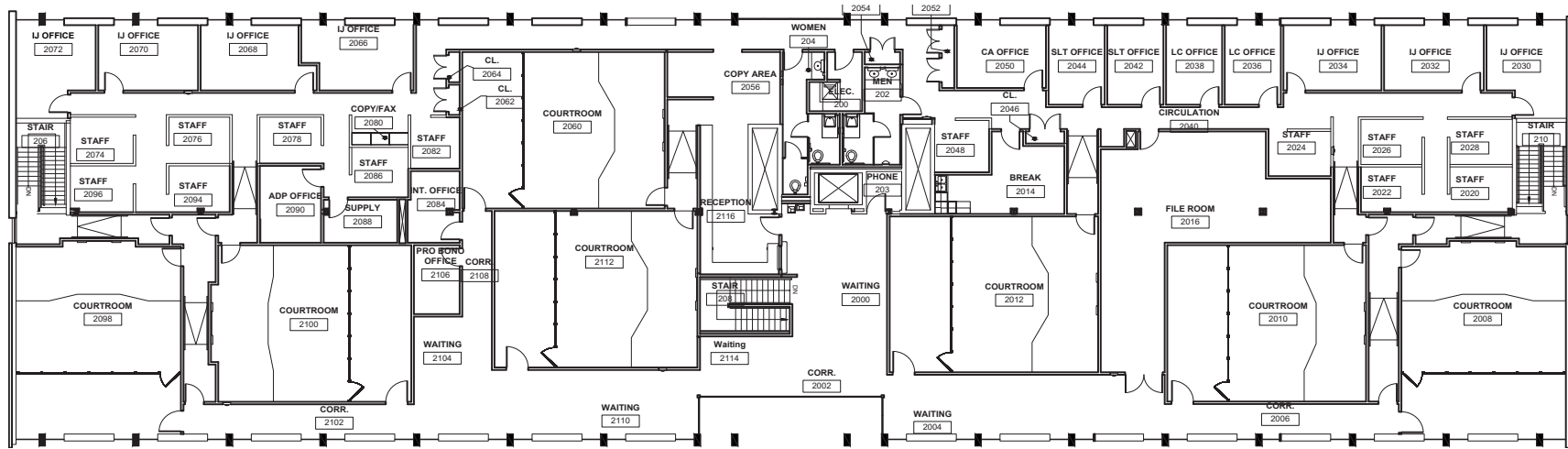
FLOOR 1

16,238 SF (Entire building - 1st & 2nd floor 32,584 SF)



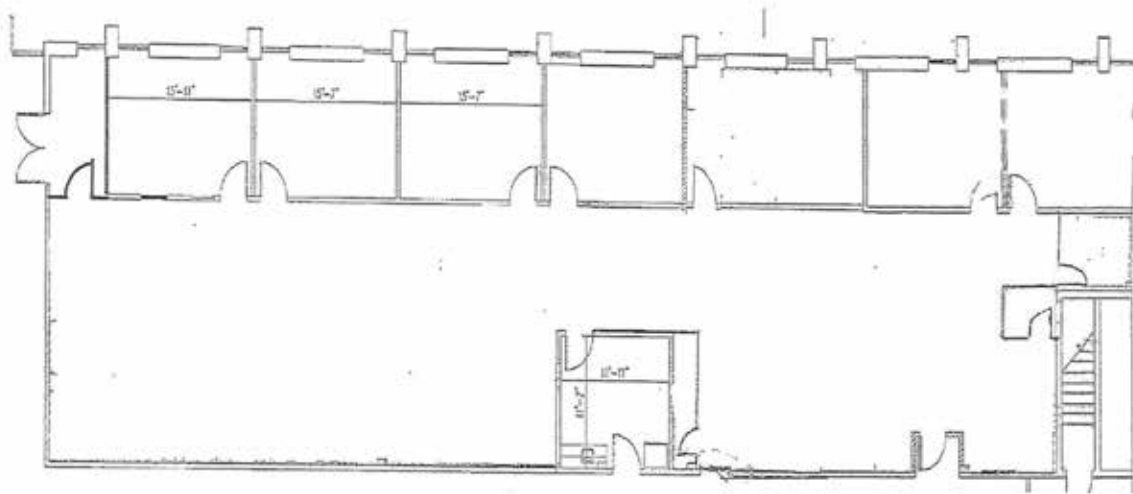
FLOOR 2

16,346 SF (Entire building - 1st & 2nd floor 32,584 SF)



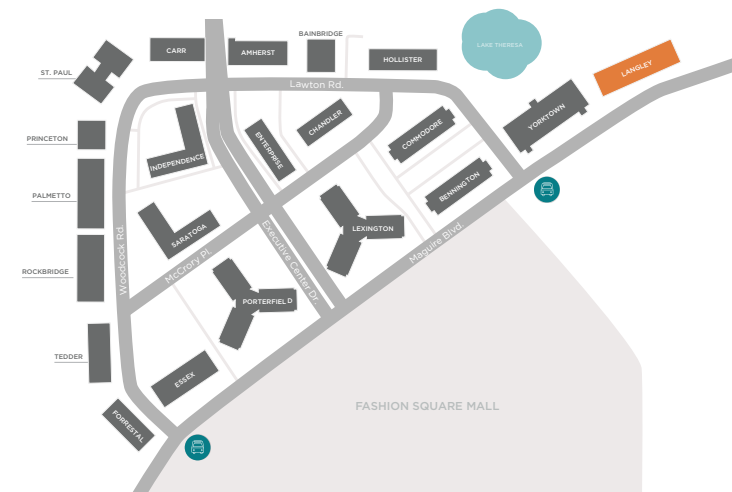
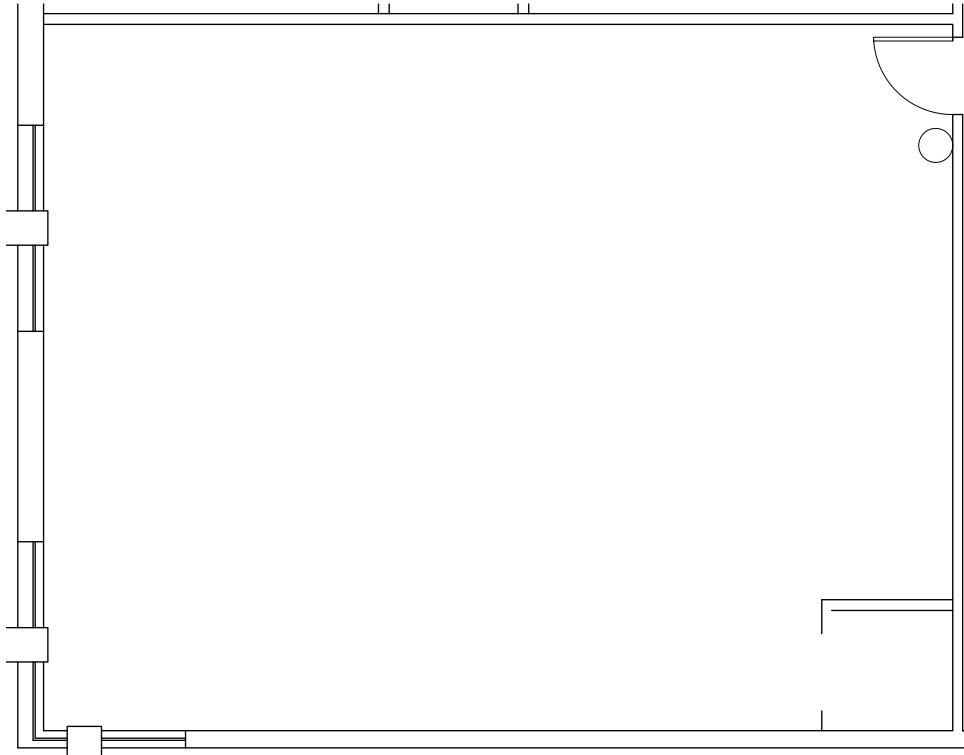
SUITE 110

4,558 SF (Available 2/1/25)



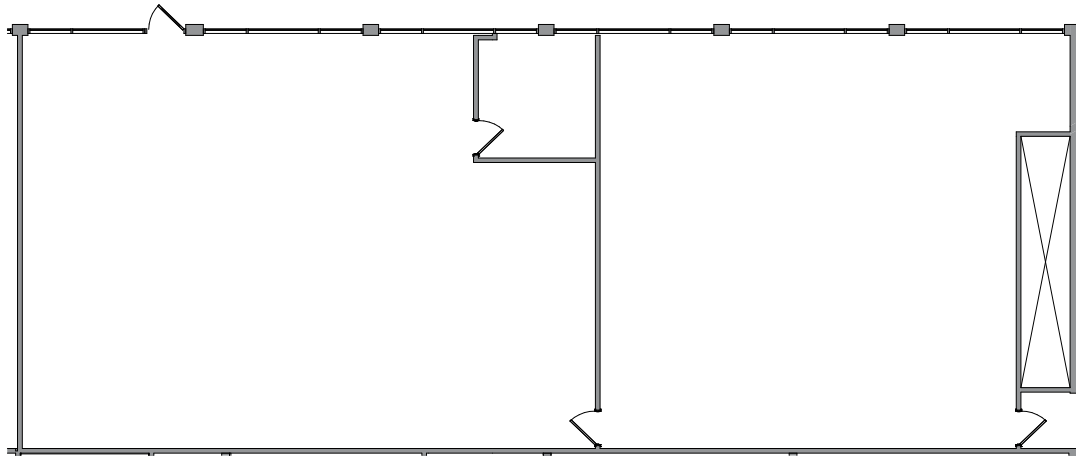
SUITE 160

1,119 SF



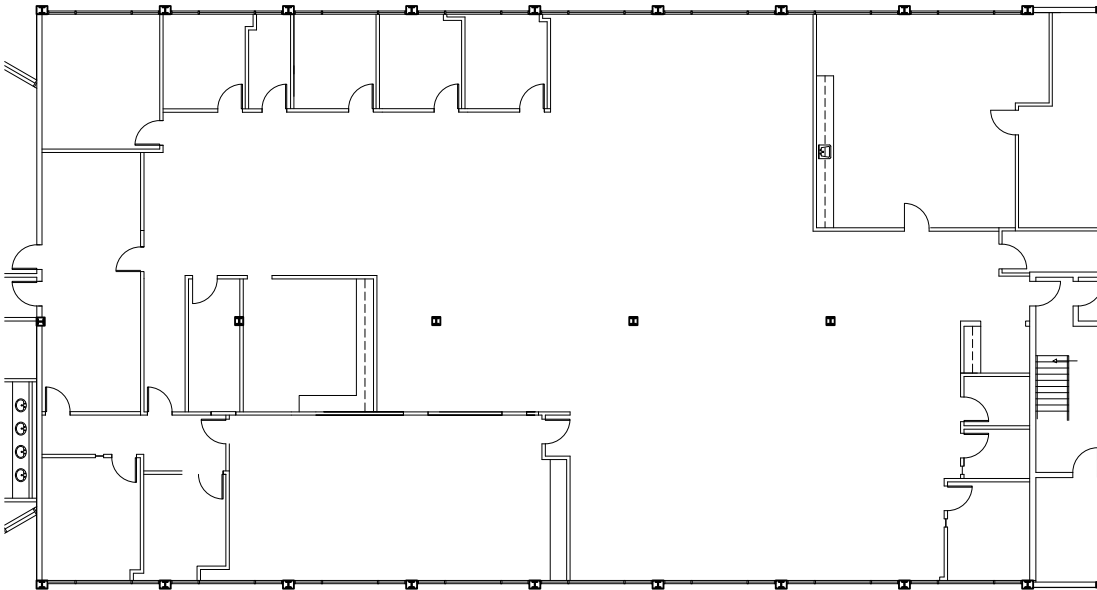
SUITE 160

3,690 SF



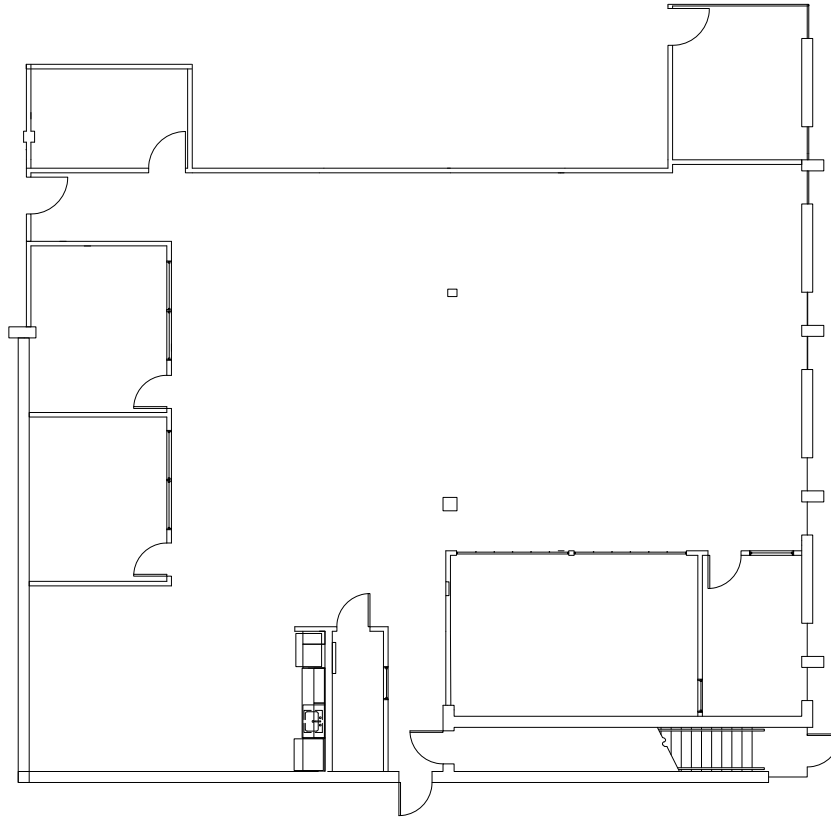
SUITE 100

10,232 SF



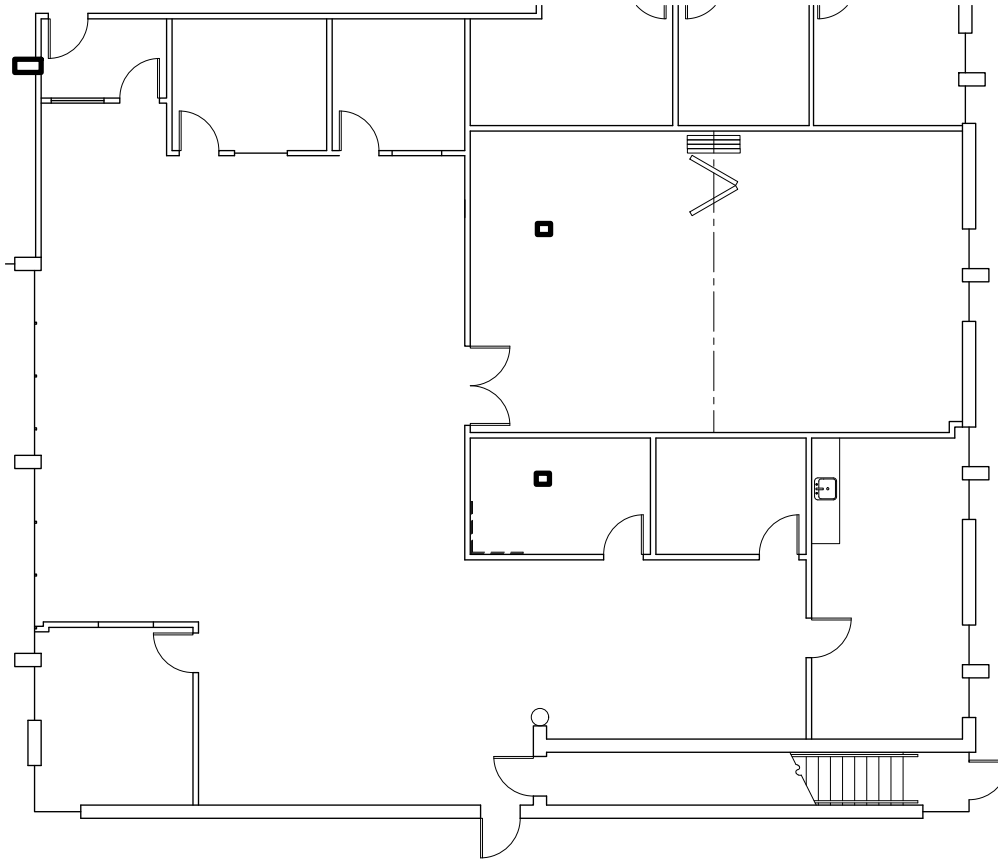
SUITE 108

4459 SF



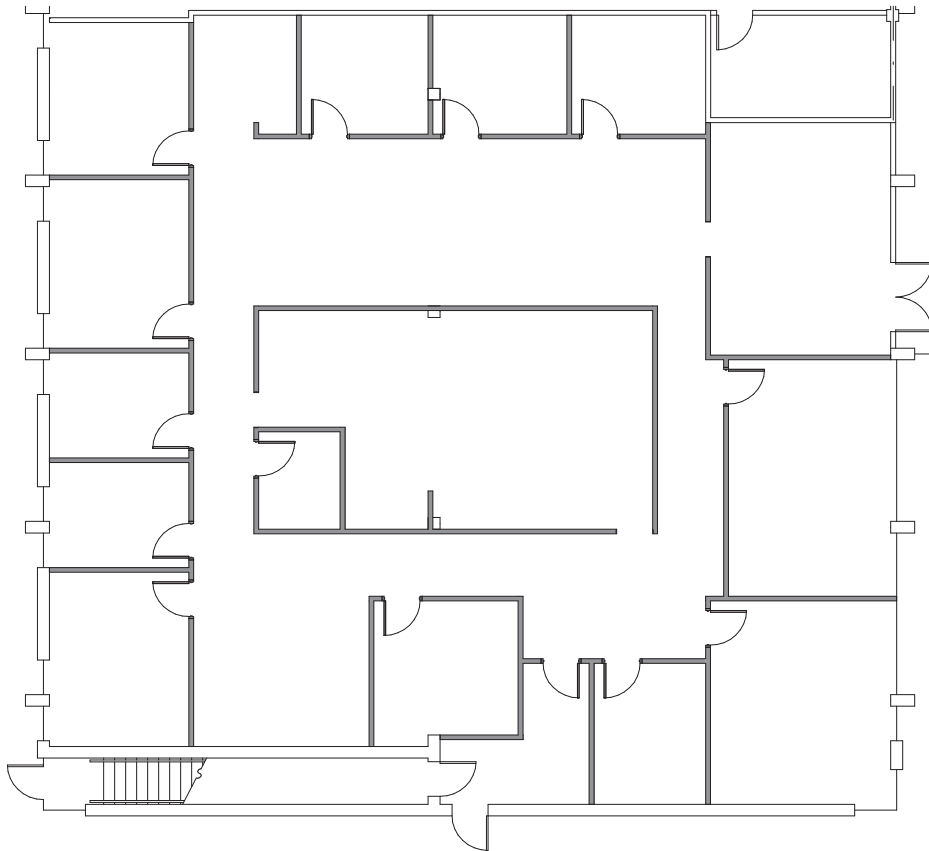
SUITE 111

4,302 SF



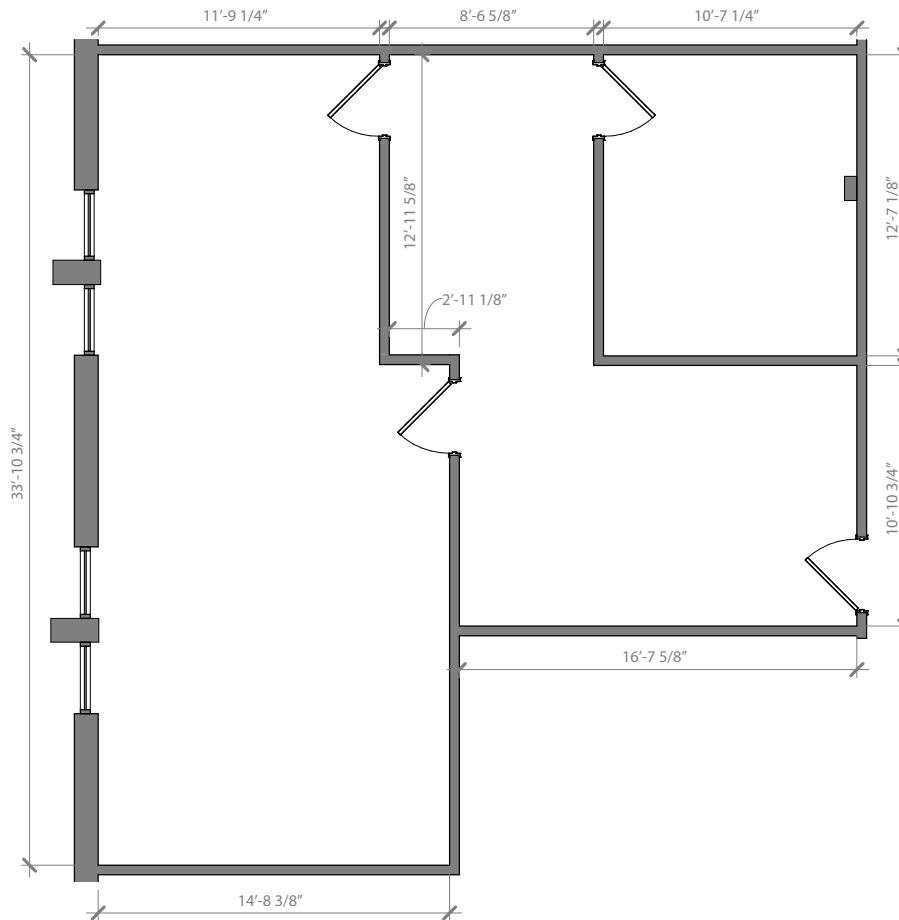
SUITE 151

5,086 SF



SUITE 268

1,118 SF



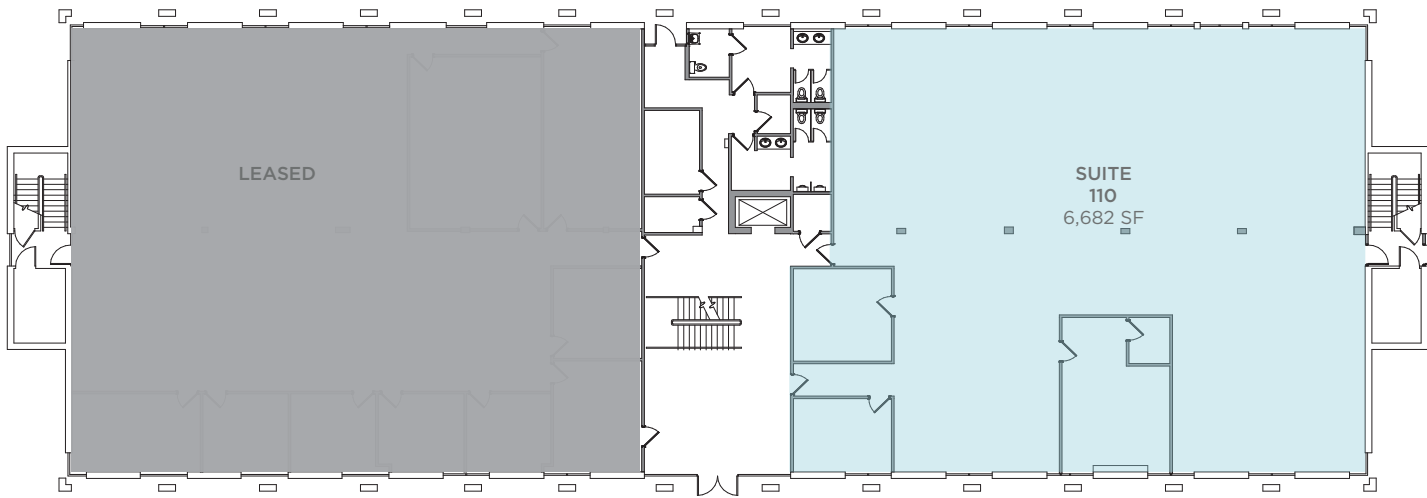
SUITE 108 & 151

9,545 SF



SUITE 110

6,682 SF (Entire building - 1st & 2nd floor 20,275 SF)



SUITE 250

5,582 SF

