



# 615 South College Street

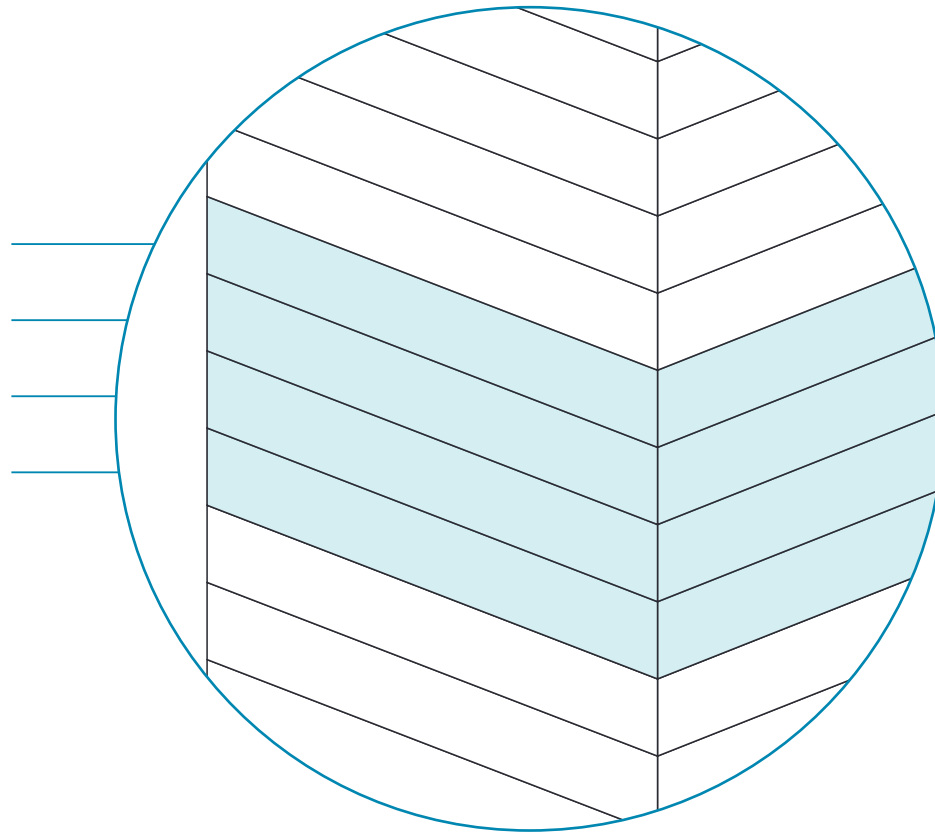
## Space availability summary

WeWork @ 615 South College Street  
Charlotte, NC

**wework**

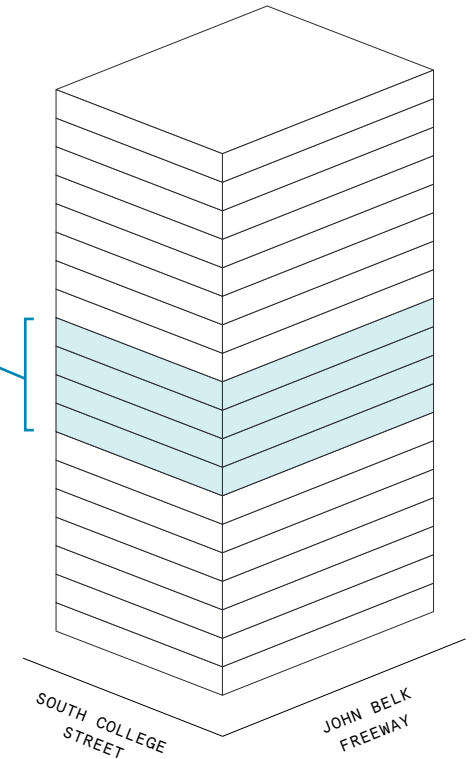
[VIEW VIRTUAL TOUR](#)

11th Floor 26,710 RSF  
10th Floor 25,290 RSF  
9th Floor 23,945 RSF  
8th Floor 27,151 RSF



103,097 RSF

TOTAL WEWORK RSF



## 615 South College Street

At a glance

Brand new suites offering flexible size & term

Dedicated, private suites available from 53 to 2,181 RSF

Move-in ready suites furnished & wired

19

TOTAL BUILDING FLOORS

375,865

TOTAL BUILDING SQ FT

All dimensions are approximate and subject to variances. It is your obligation to independently verify the particulars of the property. WeWork reserves the right to make changes.





Warm jewel tones and sleek light fixtures provide lounges with a cozy, professional atmosphere for work, socializing, and relaxation.



A fully equipped pantry with fresh coffee and tea, allows for a quick moment away from the desk to rejuvenate.

## A warm, inviting workspace in a charming city

---

Built in 2017, 615 South College Street is a Class A, 16-story glass-front office tower with spacious, light-filled offices and sweeping views of the city. WeWork's 103,097 square feet in this fresh, modern building includes a mix of sleek private offices, sun-soaked lounges, meeting spaces, and communal pantries. With all the space, style, and amenities you need, this space is sure to get your creative juices flowing and your productivity to its peak.

What's more: 615 South College Street's spectacular location in the Stonewall Corridor of Charlotte's commercial Second Ward guarantees there's rarely a dull moment to be had, members get to enjoy all the best that downtown has to offer. The building is also right next to the Stonewall Station light rail stop, making it easier than ever to explore the city at your leisure.





Our outdoor terrace is the perfect setting for members to take a well deserved break.



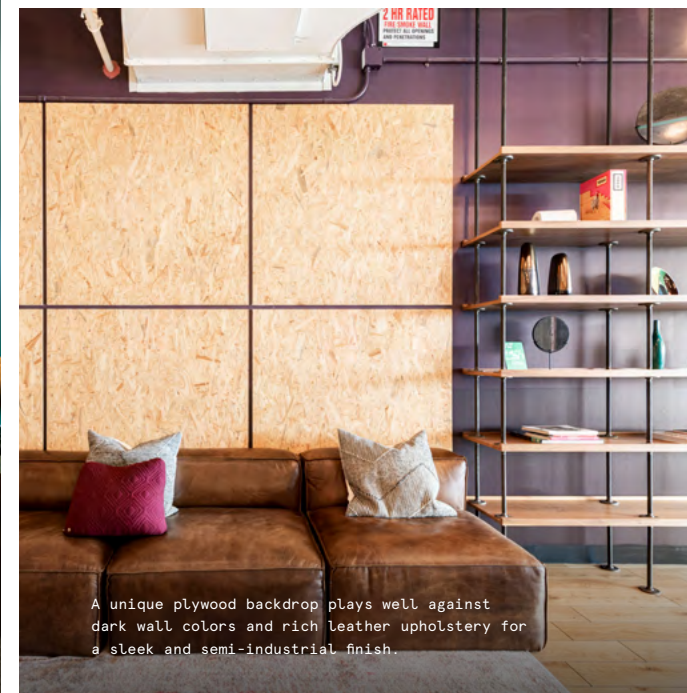
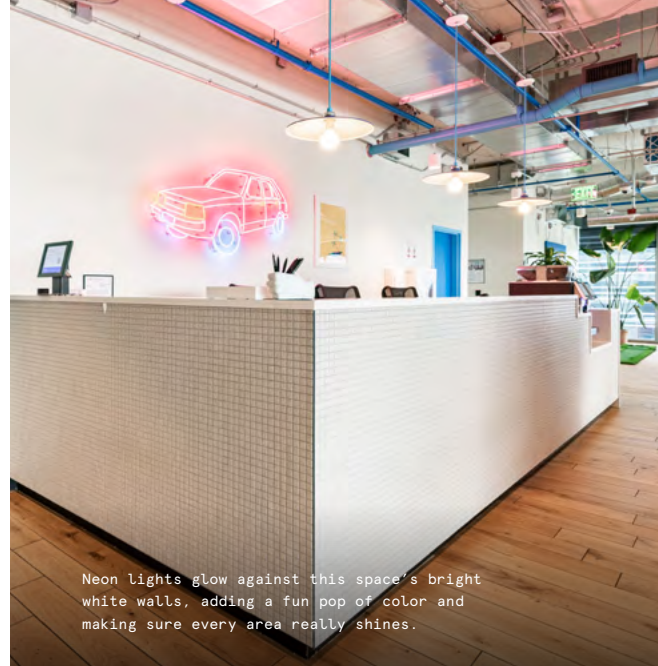
Our meeting rooms provide our members with both privacy and comfort.



# Contemporary class with fun and fresh design

This tastefully modern masterpiece boasts an eclectic blend of materials, fabrics, and furnishings that are sure to impress. Metal and woodwork complement a relaxed color palette, while leather, ceramic, and glass pair well with vibrant in-house art for a bold and exciting look and feel.

- Perforated metal communicating stairs feature a bright pink handrail and wraparound drink ledge, coupling circulation with communication
- Routed ply panels and full-height glass offer a classic office touch, while neon lights—including a “Charlotte” fixture behind the Community Desk—add a youthful feel
- Custom neon pendants for each floor’s elevator lobby are made completely in-house by WeWork’s design team





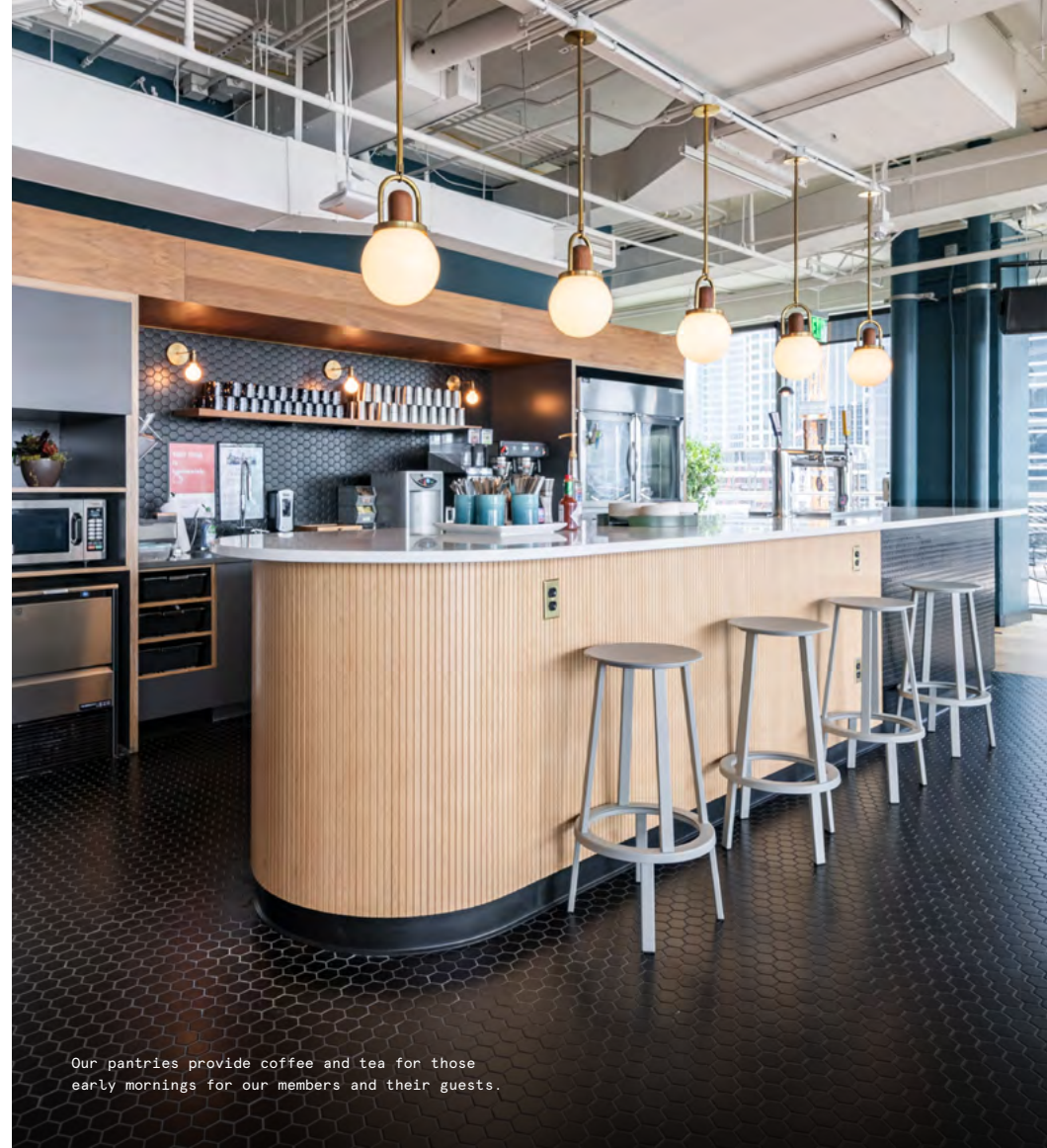


The blue neon "Charlotte" sign hangs loud and proud behind the Community Bar, paying homage to one of the South's finest cities.

## On-site amenities

---

- 24/7 security
- Electronic keycard access
- Business-class printers
- Professional events and programming
- Stocked pantry
- US mail drop
- On-site staff
- Meeting rooms
- Mother's room
- Phone booths
- Wellness/meditation room
- Event space
- Classroom space
- Fitness center
- Recreational games
- Locker room with showers
- Outdoor space
- Dog-friendly spaces
- Bicycle storage
- On-site parking
- Access to car charging stations
- Emergency back-up power
- Supplemental HVAC and electric



Our pantries provide coffee and tea for those early mornings for our members and their guests.



# Building specifications

---



## Hours of operation

---

Monday - Friday: 8am-5pm



## Security

---

24/7 attended lobby



## HVAC

---

Monday - Friday: 8am-6pm  
Saturday: 8am-1pm



## Building history

---

Built in 2017

Designed by John Portman & Associates

Developed by Portman Holdings



## Elevators

---

8 passenger elevators  
1 freight elevator



## Fire strategy

---

Fully-sprinklered floors



## Building size

---

19 stories  
375,865 SF



## Certifications

---

LEED certified




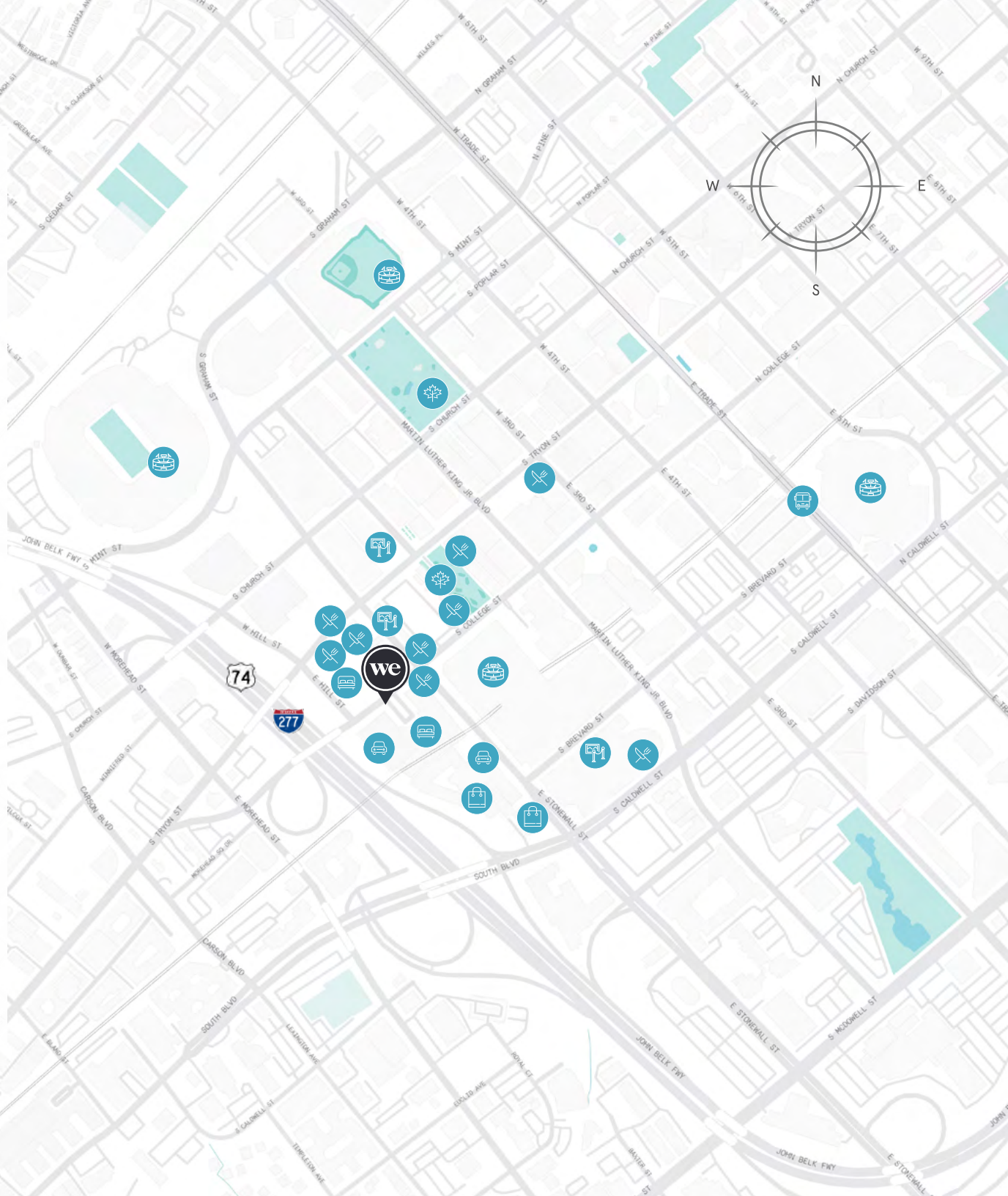
# Experience a taste of Southern hospitality

One of the fastest-growing cities in America, Charlotte has no shortage of fun and exciting things to see, explore, and, of course, taste. The Queen City is home to the Nascar Hall of Fame, Bank of America Stadium (home of the Carolina Panthers), and the Mint Museum, North Carolina's first art museum, so there's a little something for everyone to enjoy. Members can also find a number of both chain and independent restaurants with delicious fare, as well as a number of local bars perfect for an after-work drink.

What's more is that 615 South College Street is less than a five-minute walk from both the Stonewall Station Light Rail Stop and the College Street and Stonewall Street bus stop, making transportation a breeze!

## Distance to WeWork

College Street and Stonewall Street Bus Stop	 Walk	1 min
Stonewall Station Light Rail Stop	 Walk	3 min





# 8th Floor

27,151 RSF

9

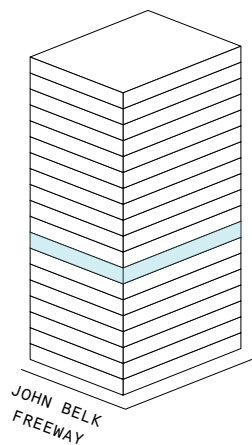
MEETING ROOM(S)

4

SHARED WORKSPACE(S)

## LEGEND

- MEETING ROOM
- SHARED WORKSPACE
- DEDICATED SPACE



SOUTH COLLEGE STREET



# 8th Floor

27,151 RSF

1,730 RSF Suite 08-113

2

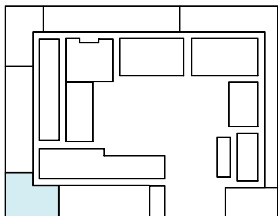
PRIVATE OFFICE(S)



SOUTH COLLEGE STREET



SOUTH COLLEGE STREET





# Suite 08-113

## 8th Floor

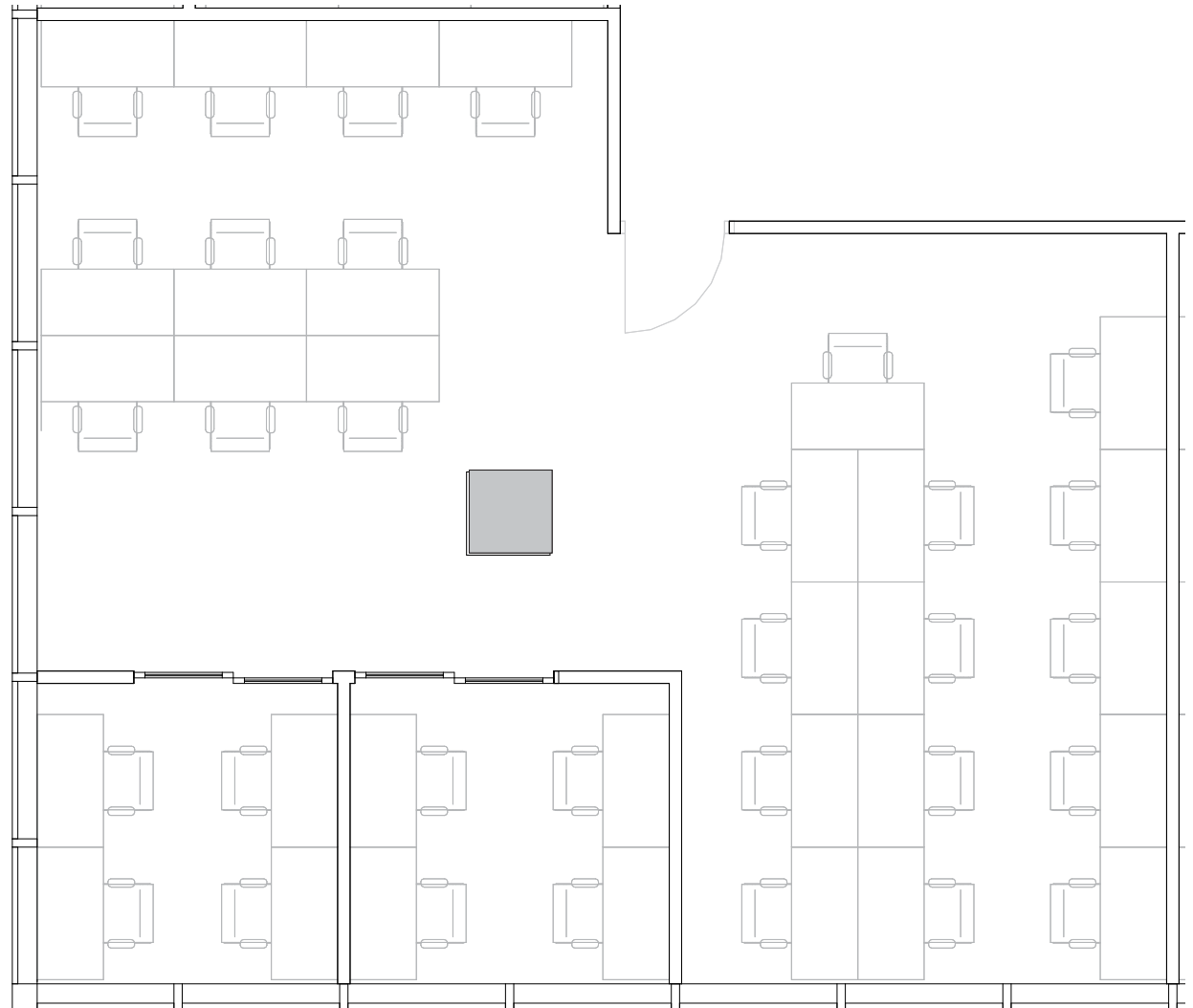
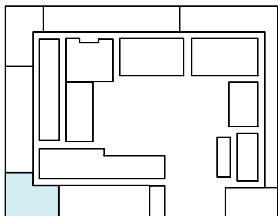
2

PRIVATE OFFICE(S)

1,730 RSF

RENTABLE AREA

SOUTH COLLEGE STREET





# 8th Floor

27,151 RSF

1,589 RSF Suite 08-130

1

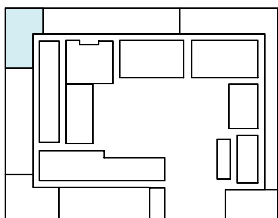
PRIVATE OFFICE(S)



SOUTH COLLEGE STREET



SOUTH COLLEGE STREET





# Suite 08-130

## 8th Floor

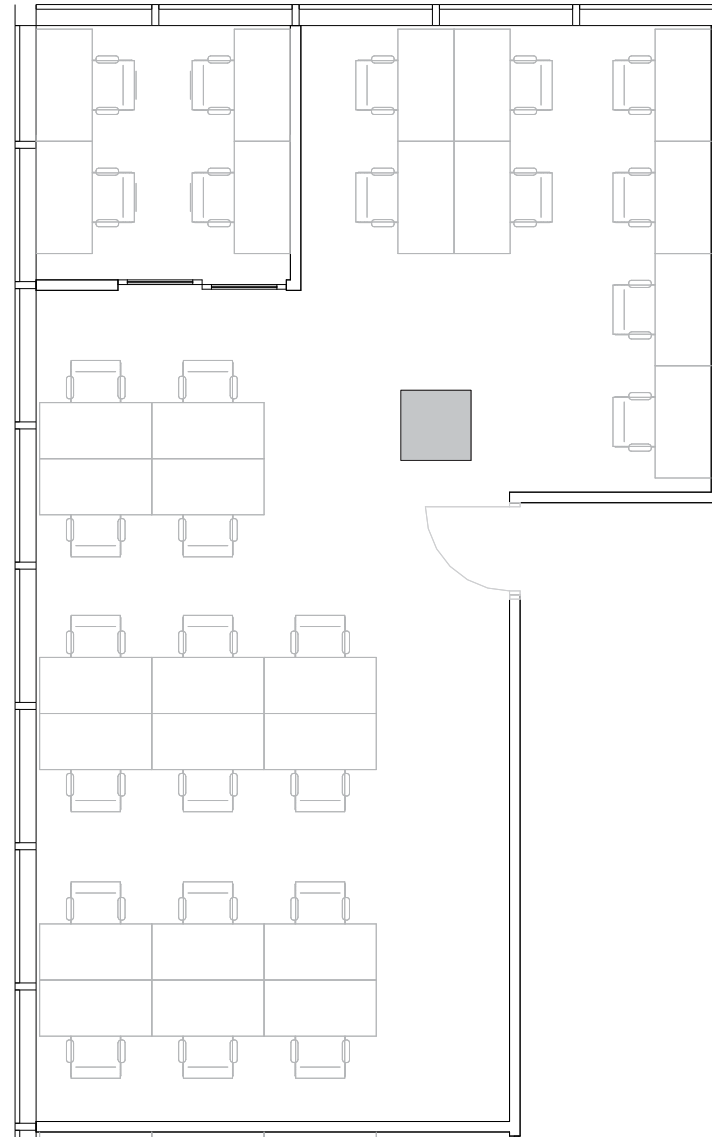
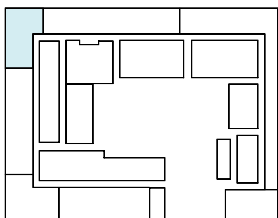
1

PRIVATE OFFICE(S)

1,589 RSF

RENTABLE AREA

SOUTH COLLEGE STREET





# 8th Floor

27,151 RSF

1,316 RSF Suite 08-174

1

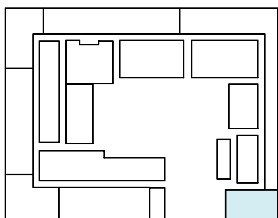
PRIVATE OFFICE(S)



SOUTH COLLEGE STREET



SOUTH COLLEGE STREET



# Suite 08-174

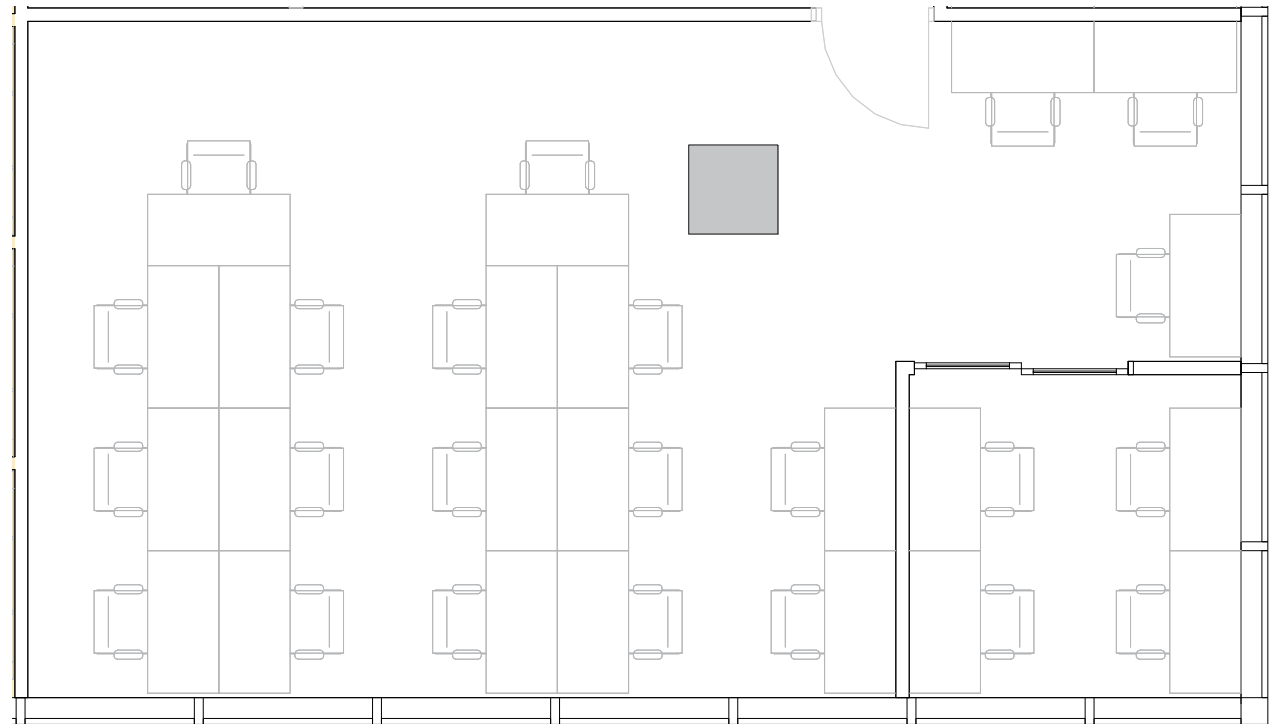
## 8th Floor

1

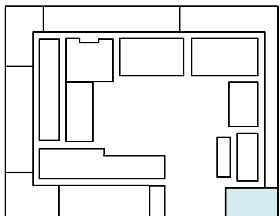
PRIVATE OFFICE(S)

1,316 RSF

RENTABLE AREA



SOUTH COLLEGE STREET





# 9th Floor

23,945 RSF

13

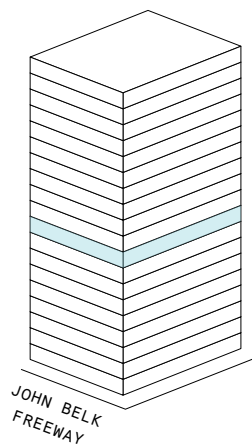
MEETING ROOM(S)

4

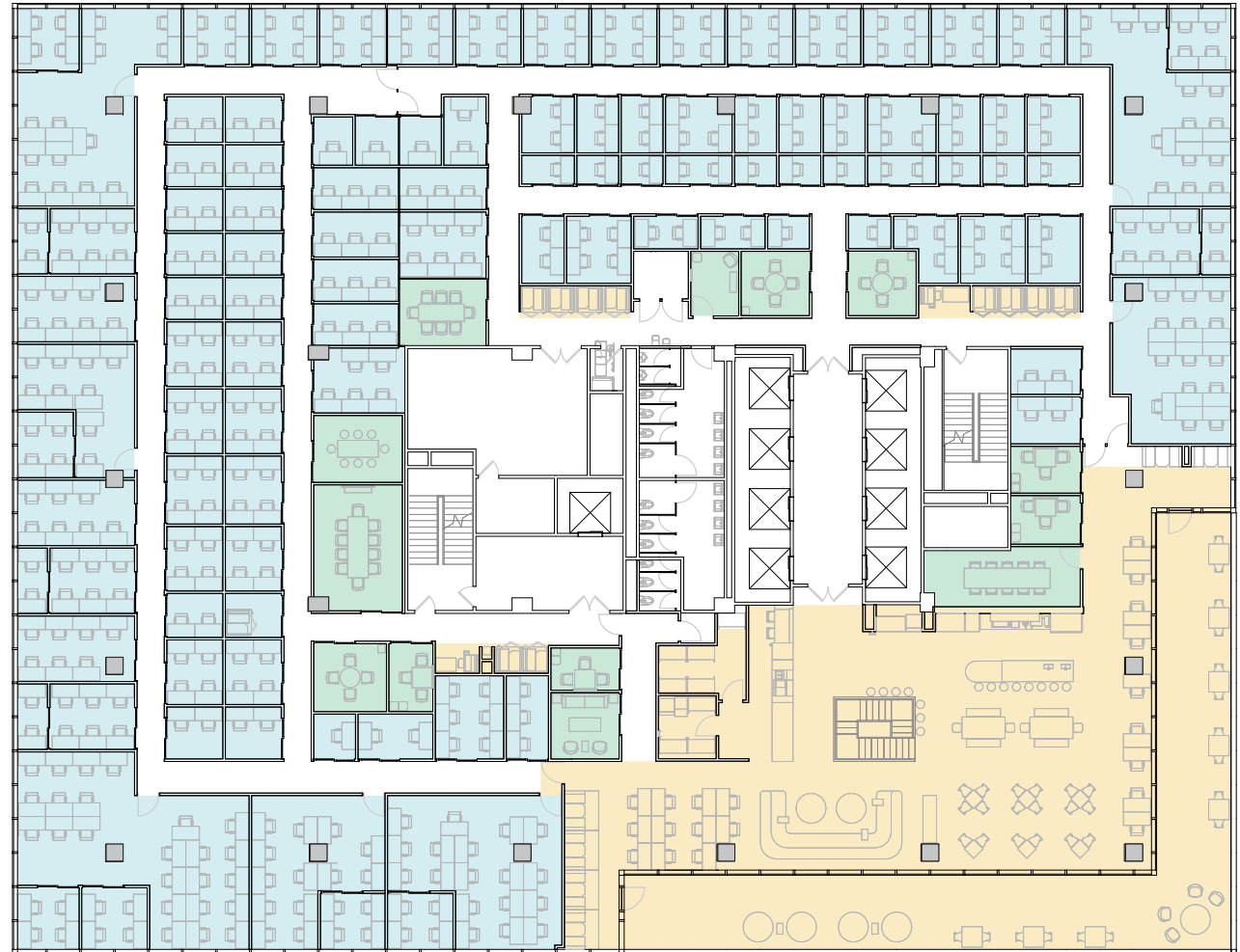
SHARED WORKSPACE(S)

## LEGEND

- MEETING ROOM
- SHARED WORKSPACE
- DEDICATED SPACE



SOUTH COLLEGE STREET



# 9th Floor

23,945 RSF

1,371 RSF Suite 09-102

1

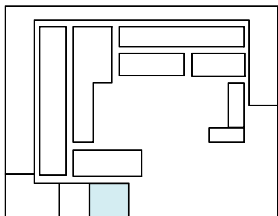
PRIVATE OFFICE(S)



SOUTH COLLEGE STREET



SOUTH COLLEGE STREET





# Suite 09-102

## 9th Floor

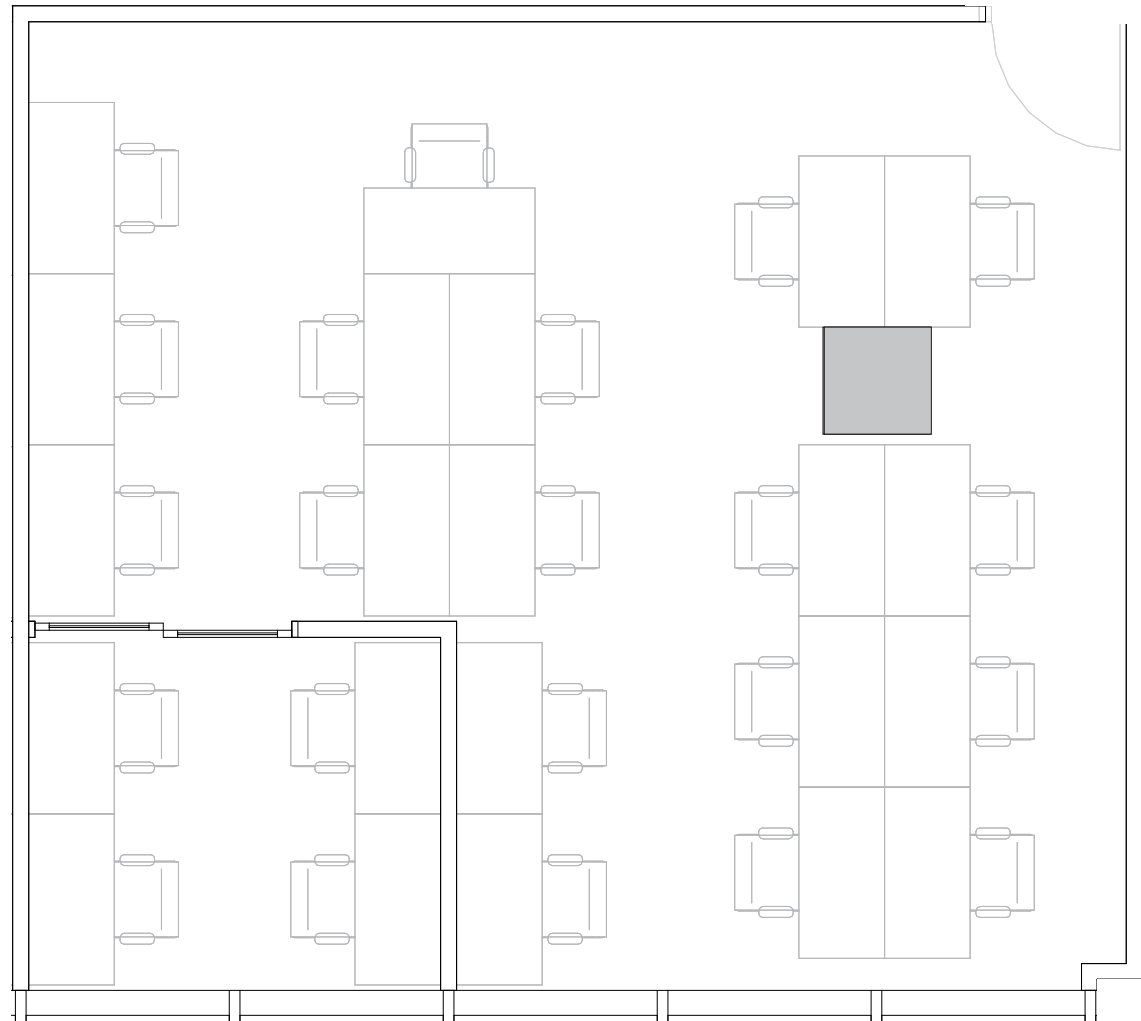
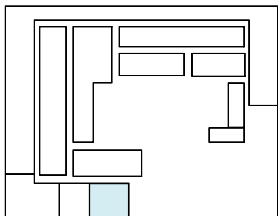
1

PRIVATE OFFICE(S)

1,371 RSF

RENTABLE AREA

SOUTH COLLEGE STREET



# 9th Floor

23,945 RSF

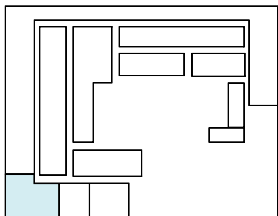
2,111 RSF Suite 09-109

2

PRIVATE OFFICE(S)



SOUTH COLLEGE STREET





# Suite 09-109

## 9th Floor

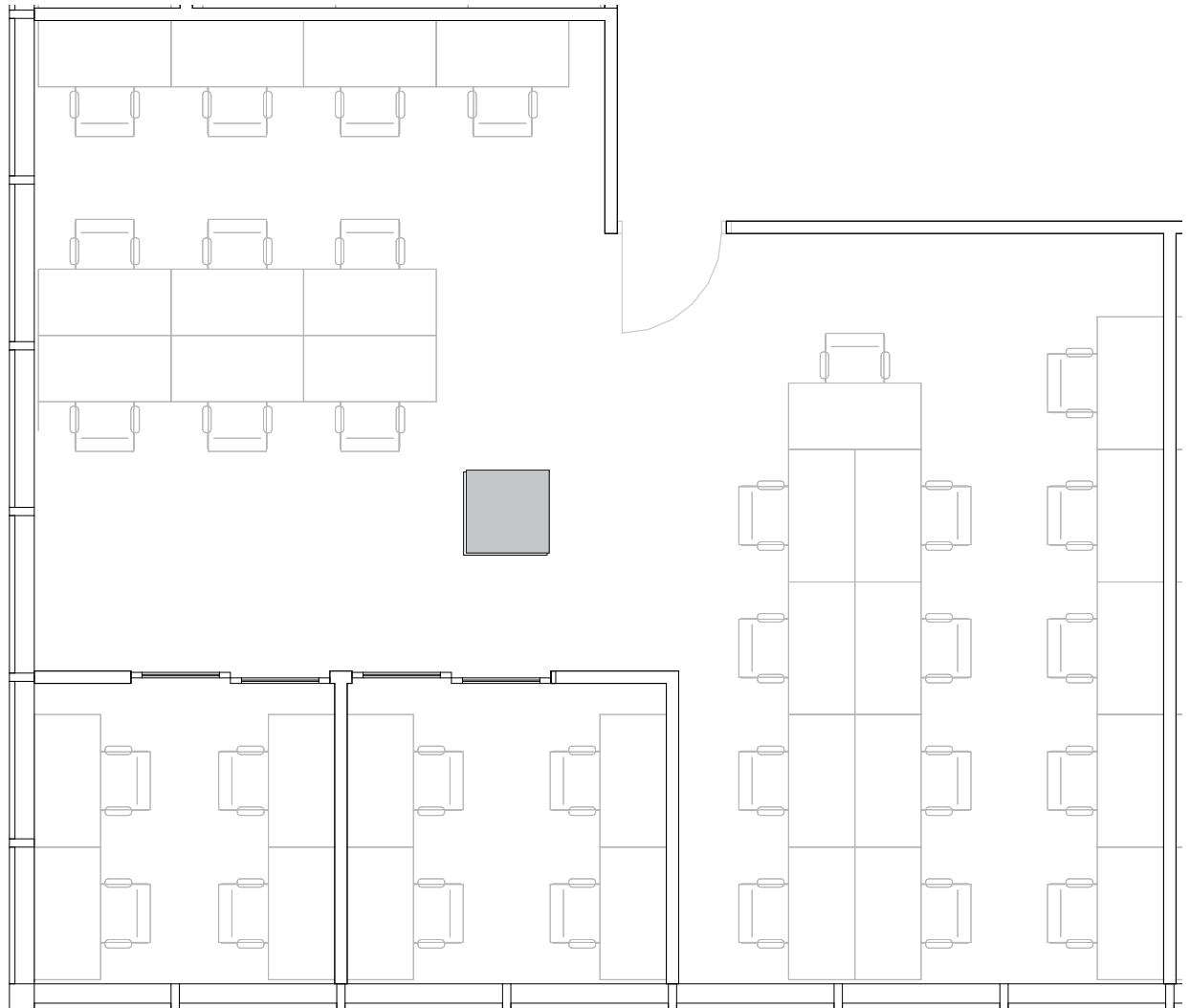
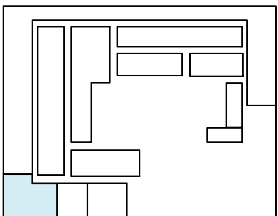
2

PRIVATE OFFICE(S)

2,111 RSF

RENTABLE AREA

SOUTH COLLEGE STREET



# 10th Floor

25,290 RSF

12

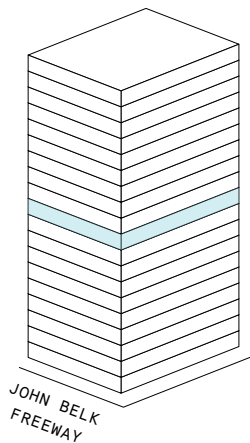
MEETING ROOM(S)

2

SHARED WORKSPACE(S)

## LEGEND

- MEETING ROOM
- SHARED WORKSPACE
- DEDICATED SPACE



SOUTH COLLEGE STREET



# 10th Floor

25,290 RSF

25,290 RSF Suite 10-100

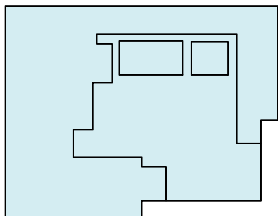
12

MEETING ROOM(S)

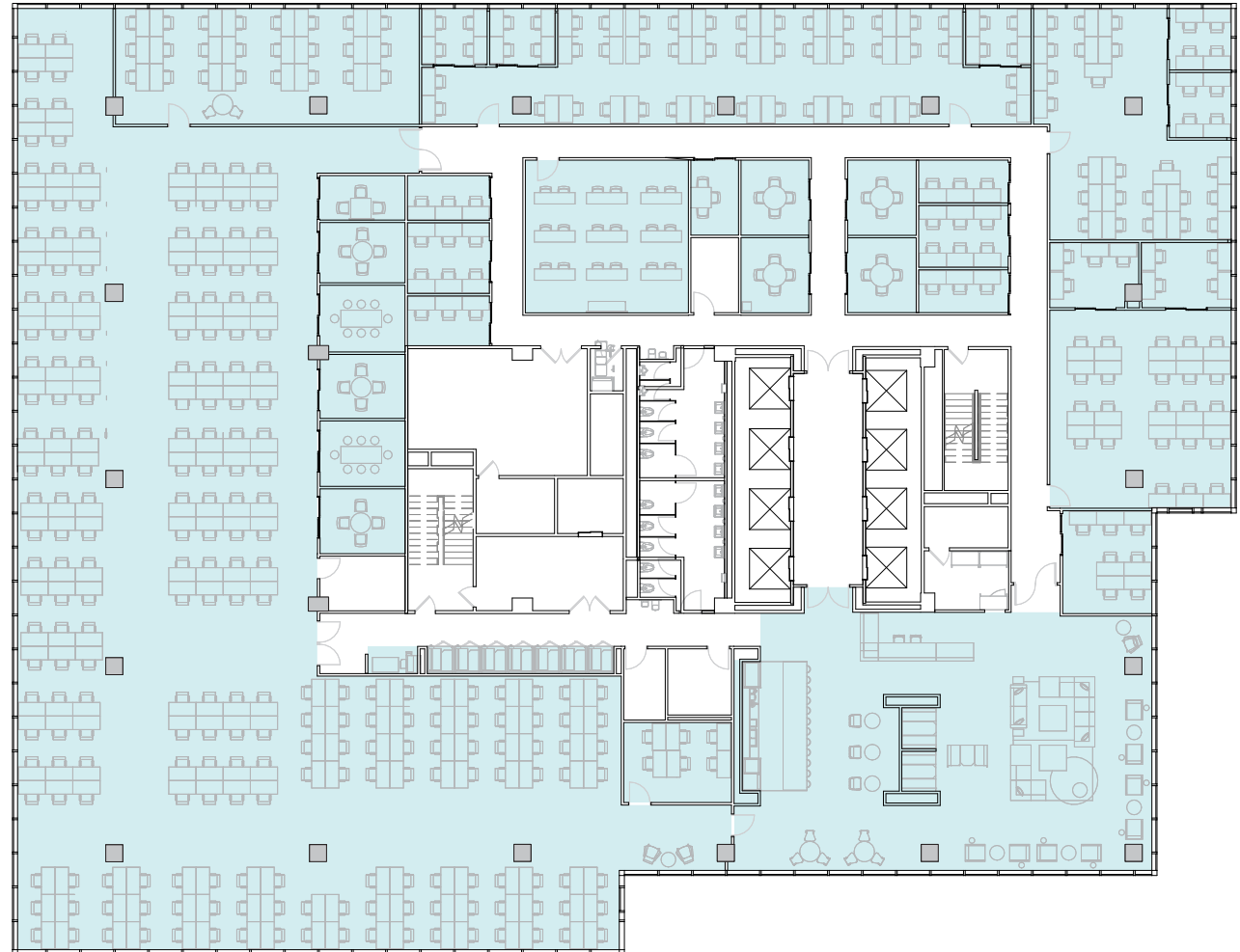
## LEGEND

 DEDICATED SPACE

SOUTH COLLEGE STREET



SOUTH COLLEGE STREET





# 11th Floor

26,710 RSF

12

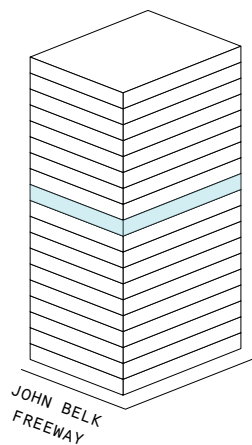
MEETING ROOM(S)

4

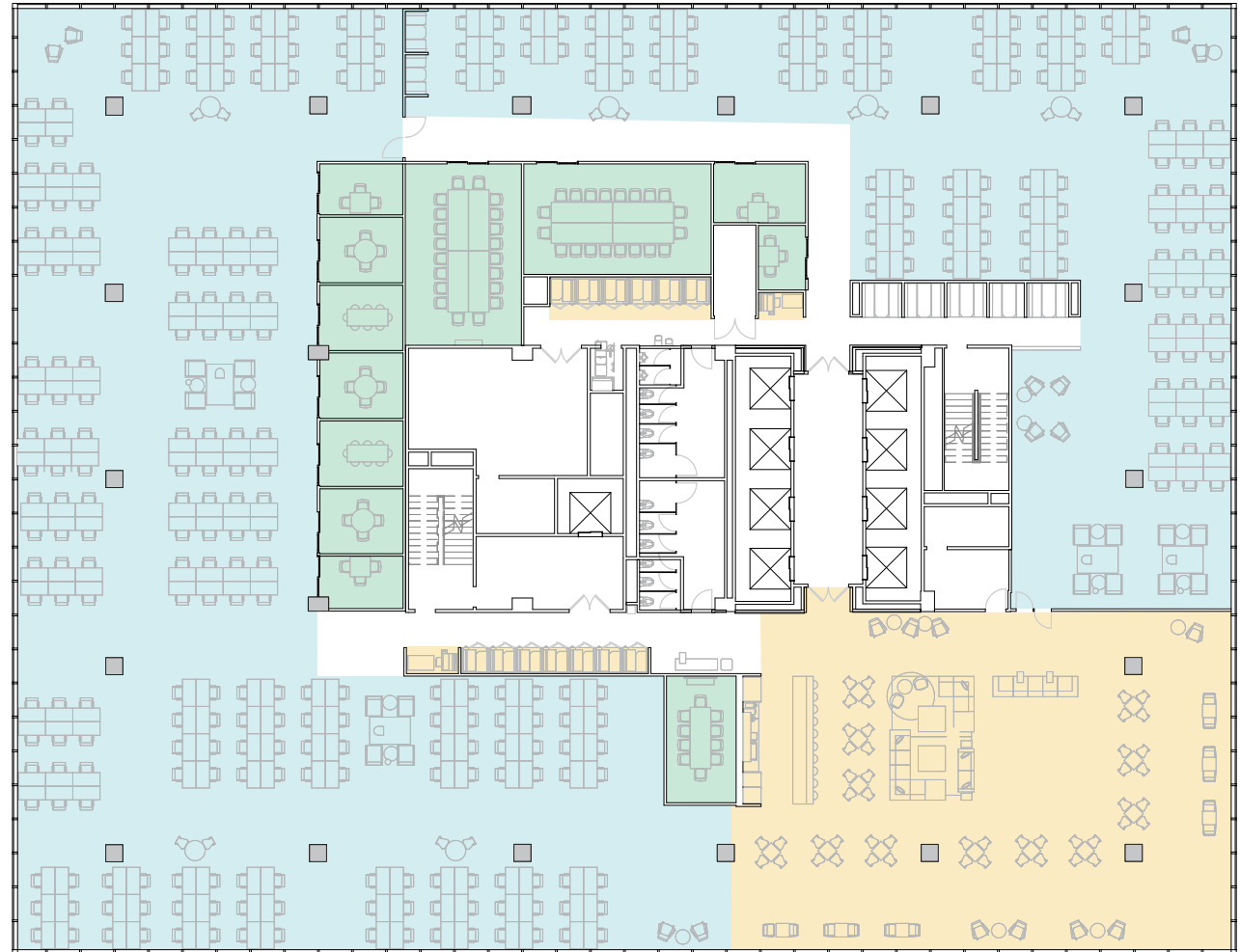
SHARED WORKSPACE(S)

## LEGEND

- MEETING ROOM
- SHARED WORKSPACE
- DEDICATED SPACE



SOUTH COLLEGE STREET



# 11th Floor

26,710 RSF

26,710 RSF Suite 11-100

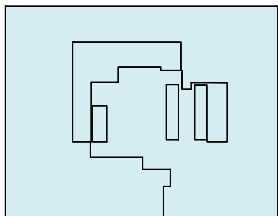
12

MEETING ROOM(S)

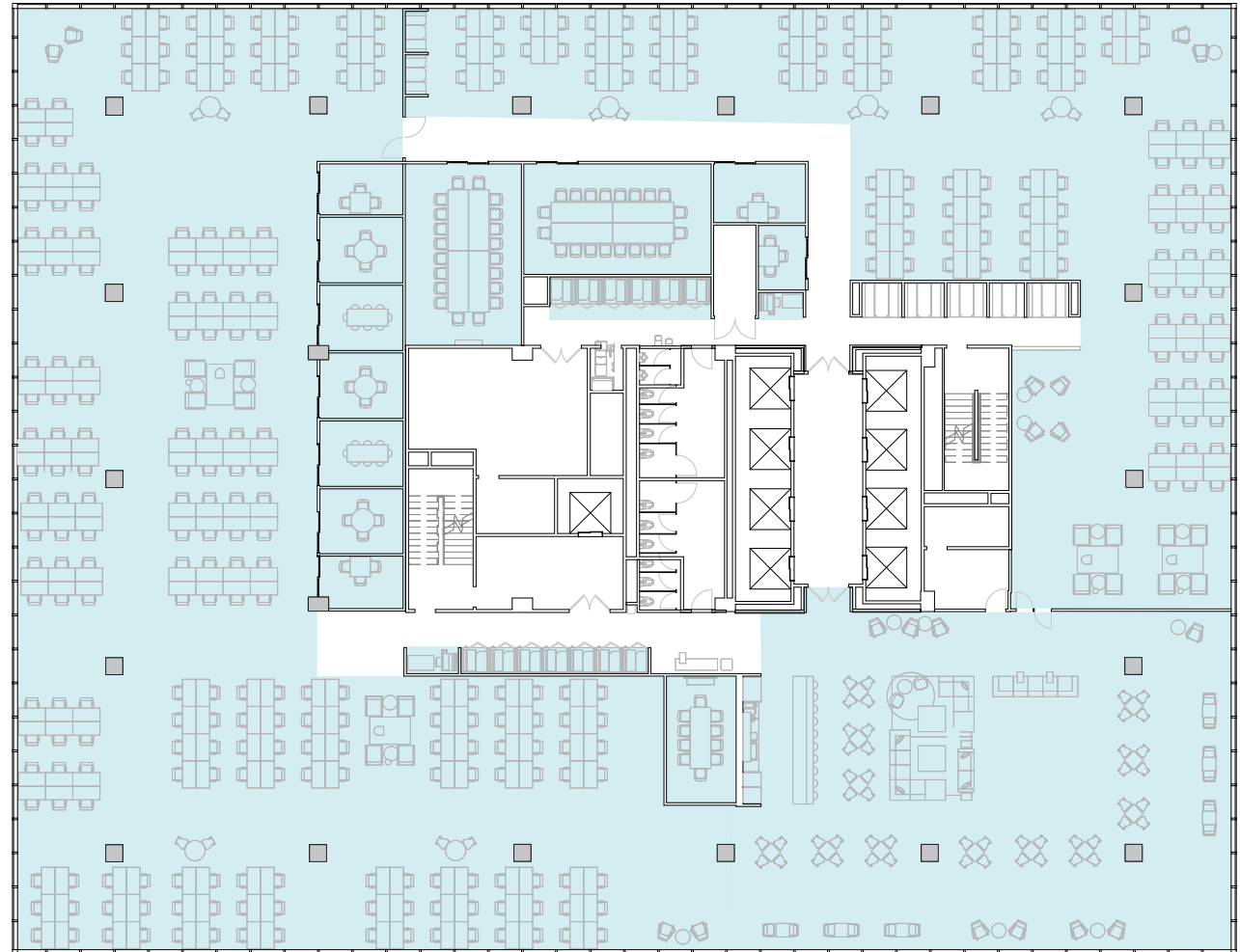
## LEGEND

 DEDICATED SPACE

SOUTH COLLEGE STREET



SOUTH COLLEGE STREET



# Contact

---

For leasing inquiries please  
reach out to our team.



## Bennett Younts

LEASING DIRECTOR  
CHARLES.YOUNTS@WEWORK.COM  
704.574.2986

## Andrew Tweardy

LEASING MANAGER  
ANDREW.TWEARDY@WEWORK.COM  
440.309.0412