

The background of the top half of the page is a photograph of a single-story commercial building. The building has a light-colored, horizontally-slatted facade and a central arched entrance. Large windows on either side of the entrance are covered by dark blue awnings with a white scalloped edge. A sign above the entrance reads "Your Name Here". The address "1457" is visible above the door. The building is situated in a parking lot with blue-painted spaces, and there are some bushes and trees in the background under a clear blue sky.

For Sublease | ±2,012 SF

Prime Office Space in Downtown Livermore

1457 First Street | Livermore, CA

Highlights

- Short or Long Term Sublease Available until June 30, 2028
- Available Fully Furnished, "Plug and Play" or Unfurnished
- Downtown Location
- Abundant Parking
- Awning Signage
- Walk to Coffee, Restaurants and Services
- Access from Both 1st and 2nd Streets
- Centrally Located

Contact Broker

LeAnn Stuart

Associate

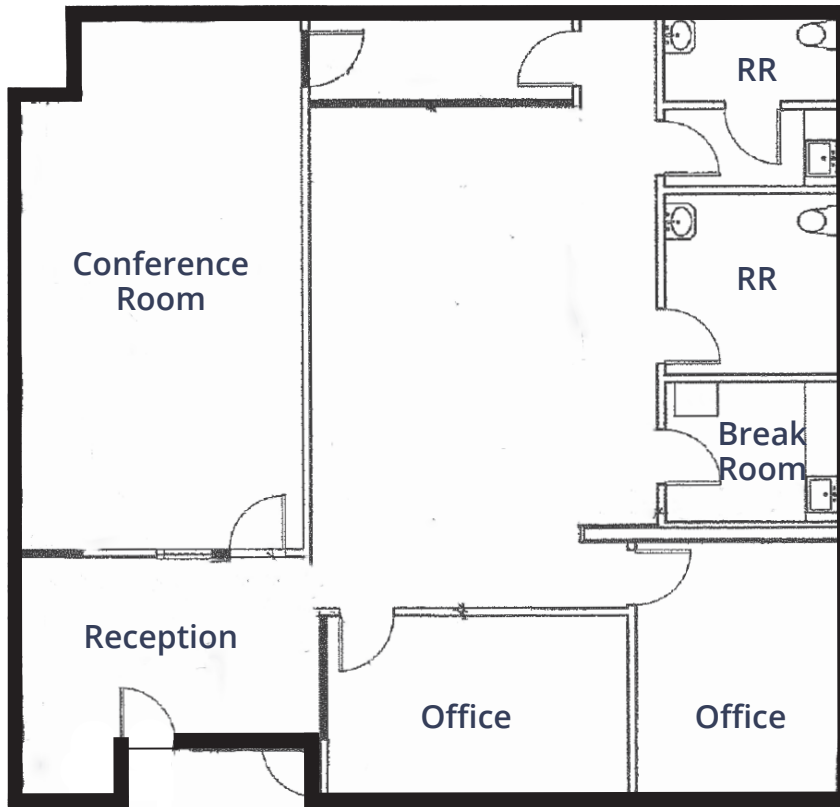
CA License No. 01833304

leann.stuart@colliers.com

+1 925 227 6272

1457 First Street | Livermore, CA

Floor Plan



Discover the perfect workspace with this exceptional office for lease in downtown Livermore.

Description:

This fully built out office suite offers:

- Two Large Private Offices: Spacious and well-lit, ideal for executives or team leads.
- Reception, two restrooms, break room, bullpen and large conference room

Additional Features:

- Abundant Parking
- Prime Location: Just a short walk to a variety of coffee shops, restaurants, shopping, and services. Enjoy the vibrant atmosphere and amenities of downtown Livermore.
- Don't miss out on this opportunity to secure a prime office space that combines functionality, convenience, and a fantastic location.

1457 First Street | Livermore, CA

Aerial Overview

