



# WHERE PEOPLE & TEAMS THRIVE



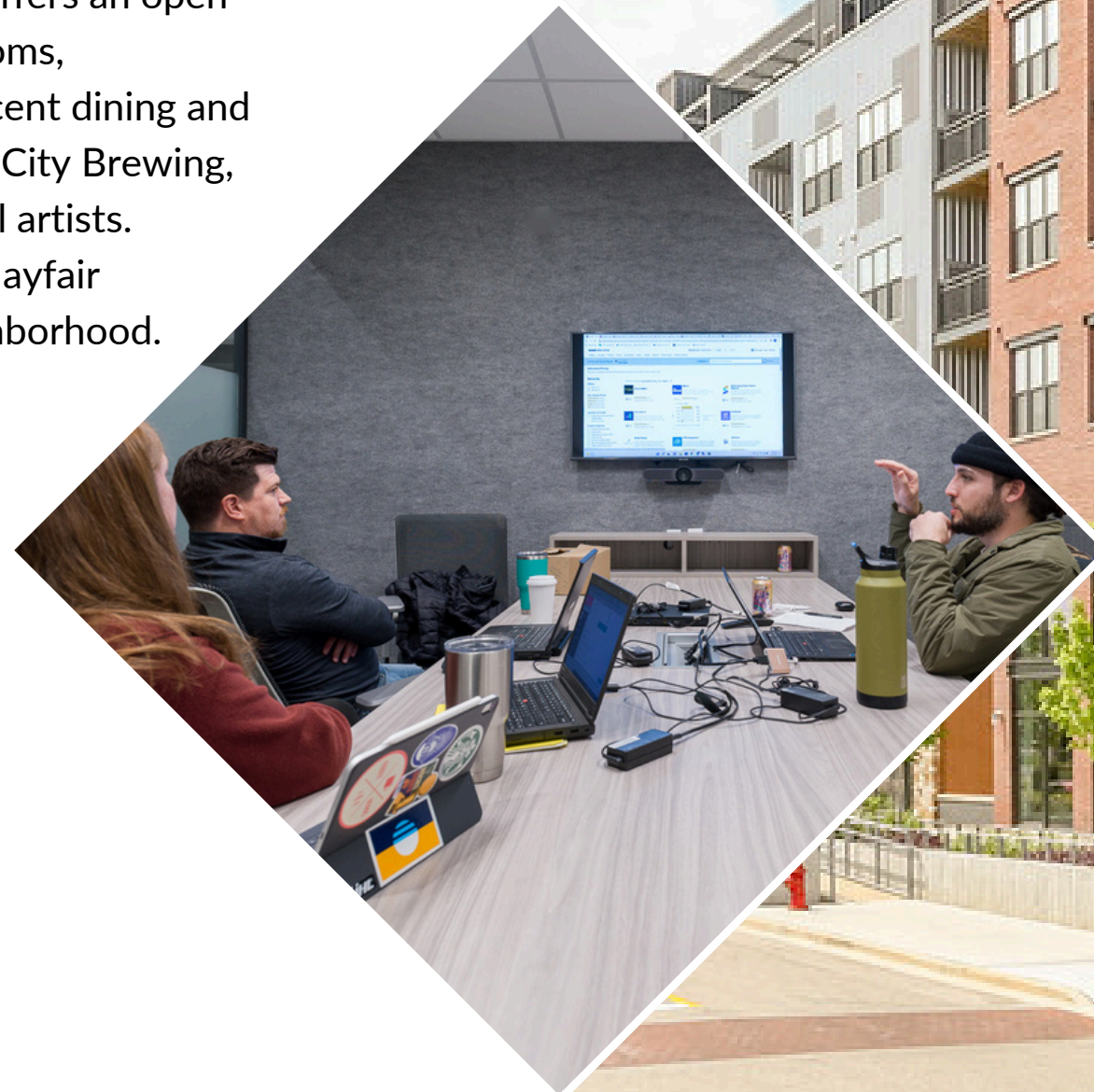
# Expansive Workspace Wauwatosa

11220 West Burleigh Street, Wauwatosa, WI

This beautiful two-floor boutique space offers an open mezzanine layout, ondemand meeting rooms, complimentary parking, outstanding adjacent dining and retail including Whole Foods® and Good City Brewing, and hosts a rotating gallery featuring local artists. Expansive Wauwatosa is located in the Mayfair Collection, a premier live-work-play neighborhood.

## Shared Amenities

- 2** Meeting Rooms
- 1** Event Venues
- 1** Phone Booths
- 1** Expansive Lounge

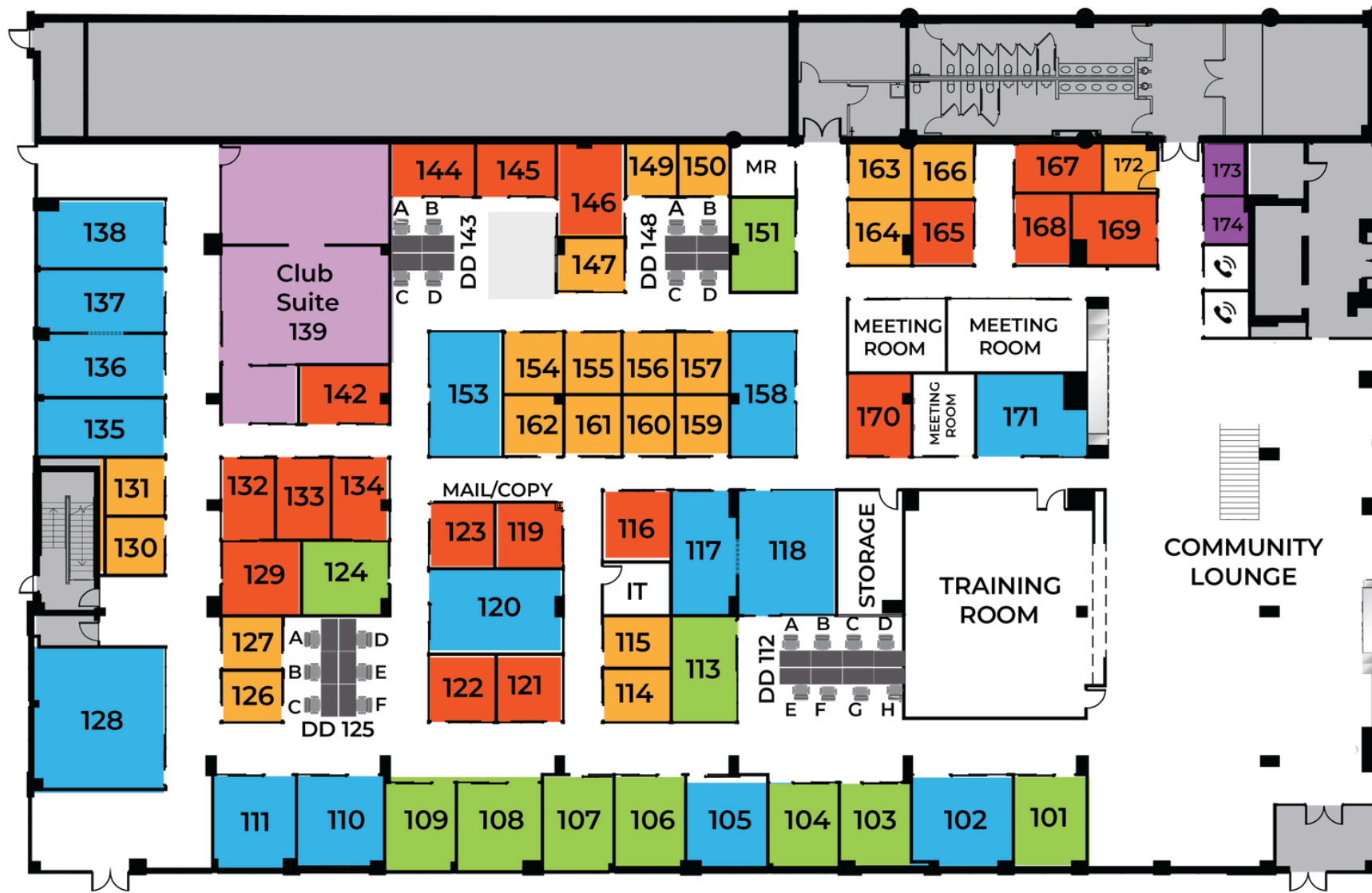




# Wauwatosa

11220 West Burleigh Street, Wauwatosa, WI

## 1ST FLOOR



- 1 person office
- 1-2 person office
- 3-4 person office
- 5-6 person office
- 7-9 person office

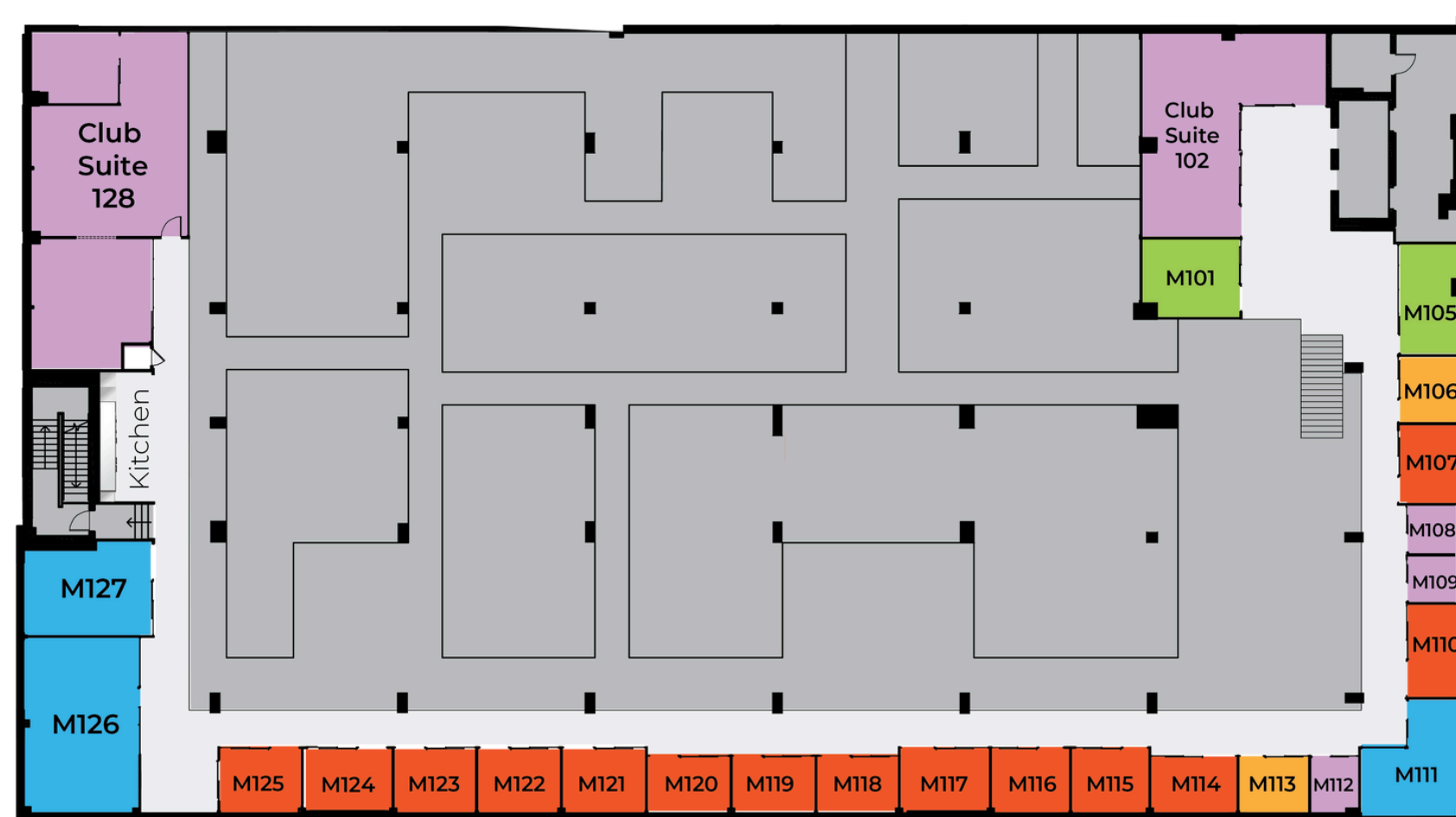




# Wauwatosa

11220 West Burleigh Street, Wauwatosa, WI

## MEZZANINE FLOOR



- 1-2 person office
- 3-4 person office
- 5-6 person office
- 7-9 person office





# Why Expansive?

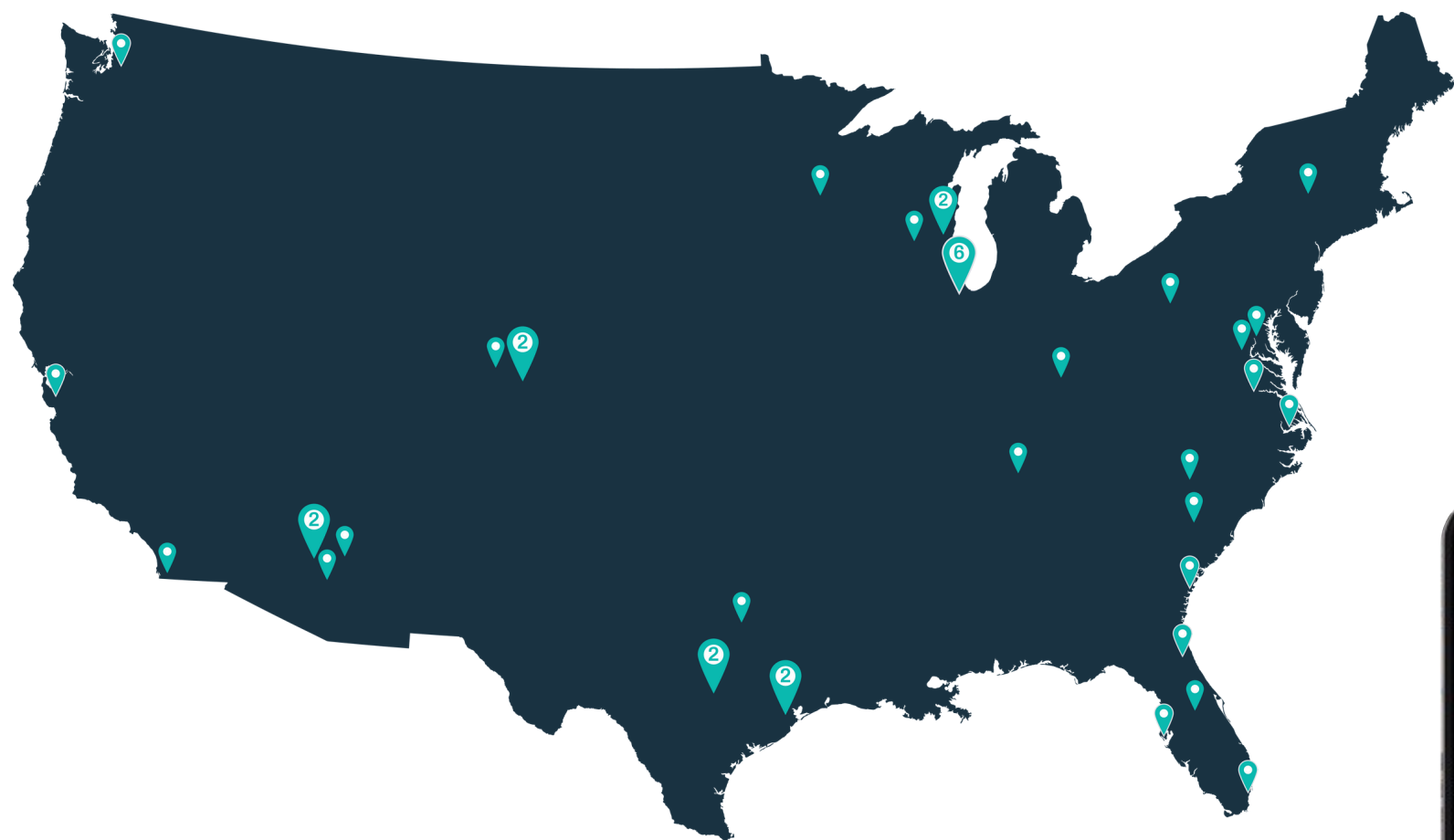
At Expansive, we own the buildings we develop and operate. This allows us to share the incomparable advantages of a fully-integrated, nationwide property owner with our clients, including our four cornerstones of workspace success:

- 1 Maximum Productivity**  
To deliver on your potential
- 2 Vibrant Community**  
To foster community and build relationships
- 3 Unparalleled Flexibility**  
To realize your vision even as it evolves
- 4 Unwavering Stability**  
To establish confidence in an uncertain world



*Membership Includes:*

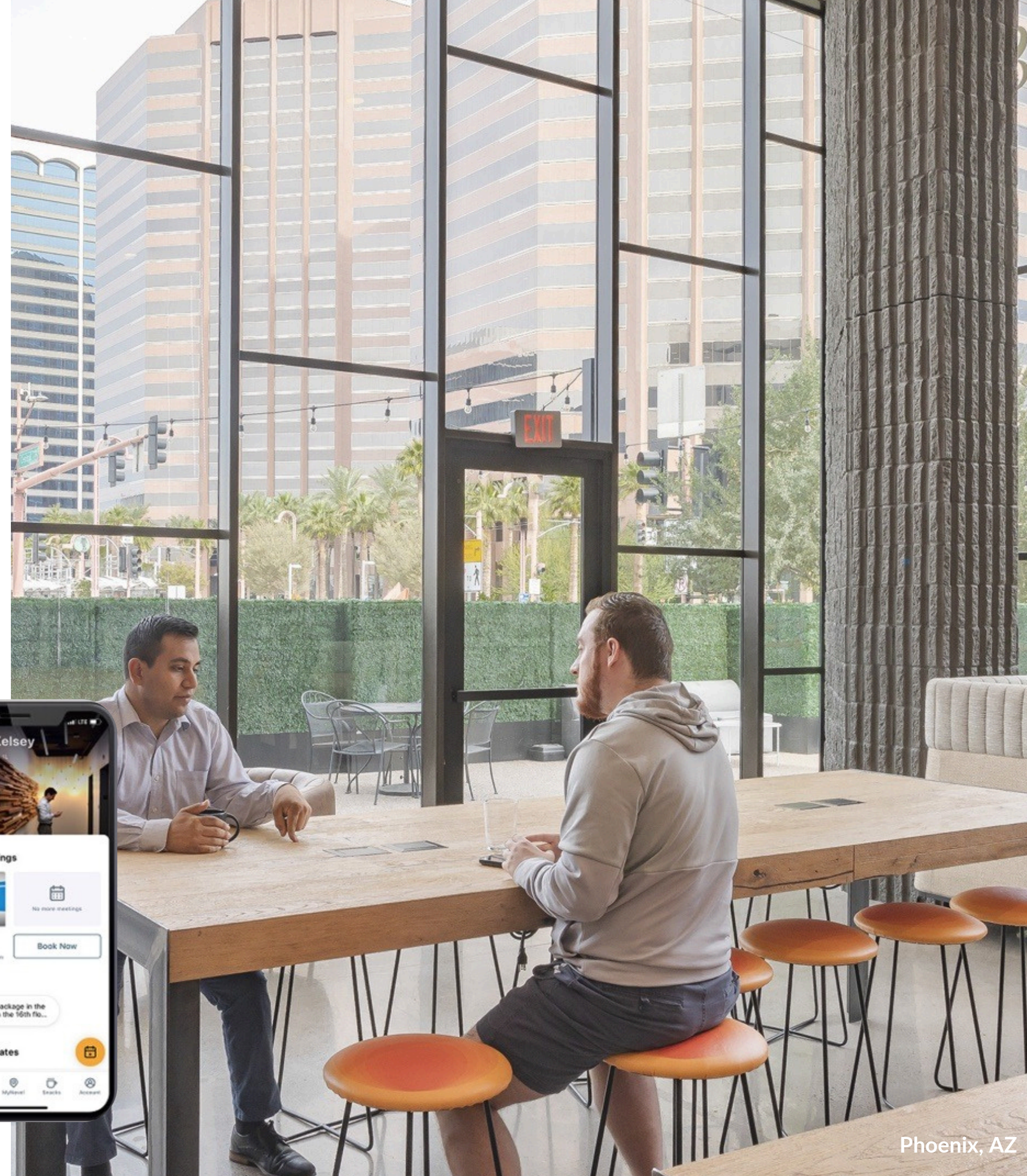
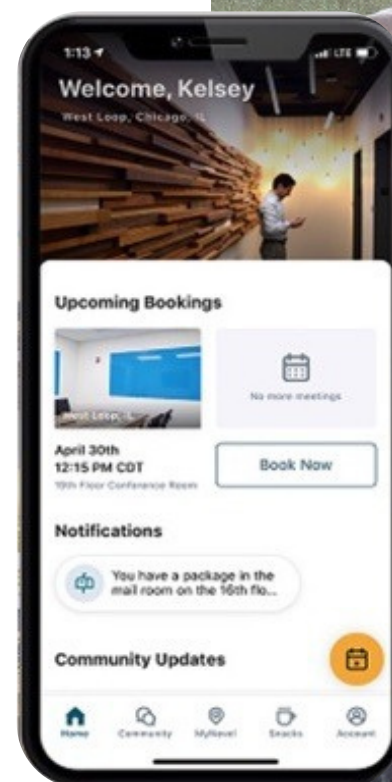
## Access to All Locations



**31**  
Cities

**3.8M**  
SF

**41**  
Locations



Phoenix, AZ



Membership Includes:

# Building Amenities



FULLY  
FURNISHED



DIRECT FIBER  
INTERNET & WIFI



EXPANSIVE  
LOUNGE



ESPRESSO  
BAR



ENHANCED  
CLEANING



SOCIALLY  
DISTANCED  
WORKSTATIONS



TOUCHLESS  
FAUCETS &  
RESTROOMS



UTILITIES



24/7 ACCESS



ON-SITE  
MGMT



HIGH SPEED  
PRINTERS



MEMBER  
DIRECTORY



MOTHERS'  
ROOM



COMMUNITY  
APP



BIKE ROOM



NETWORK  
LOUNGE ACCESS







# Enterprise Clients We Serve





# Workspace Options for Customized Solutions

[Learn More](#)

## Dedicated Space

- Team Suites
- Private Offices
- Access Pass



## Shared Space

- Dedicated Desk
- Coworking Membership



## On-Demand Space

- Conference Rooms
- Day Office
- Lounge Access



## Virtual Office

- Virtual Office



# Expansive Team Suites Provide Room to Grow

Multi-room Team Suites for 10 to 500 people are delivered fully furnished and move-in ready. Our in-house experts can help customize to meet specific needs. Team Suites feature open floor plans with:

- Dedicated kitchen with bar top seating
- A combination of open space and private offices
- Private conference room with smart TV monitor and blue board
- Turnkey technology package with high-speed fiber internet and Alexa-enabled sound system
- Biometric private entry to your suite and keyless building entry for secure 24/7 access
- And much more

[Learn More](#)



# Go Beyond Workspace



Many centers also offer additional service options for an end-to-end experience  
**Corporate Meeting & Event Space • Storage • Parking**



# What Happens Next?

We invite you to proceed in two simple steps.

## 1 Choose your solution

Act now to avoid disappointment. We operate on a first-come, first-served basis.

## 2 Easy online sign up

Once you've chosen your preference option, we'll send you a one-page agreement, which is just one click to sign.

Further questions? Please contact us if we haven't given you the right solution here. Talk to us. Other options are available.

**Contact Us:**

**[sales@expansive.com](mailto:sales@expansive.com) | 877.301.6217**