

MURRIETA SPRINGS MEDICAL CENTER

25395 Hancock Avenue,
Murrieta, CA 92562



FOR LEASE

DIRECTLY ACROSS FROM RANCHO SPRINGS HOSPITAL

Join Temecula Valley Advanced Imaging Center, Inland Eye Specialists,
Rancho Obstetrics and Gynecology, Soft Touch Dentistry, Arrowhead Orthopedics, and Everside Health

Suite	Rentable Square Feet	Asking Rent Per Square Foot + NNN
210	±2812	\$2.50 + NNN
240	±1460	\$2.50 + NNN

PROJECT: This contemporary, two-story medical office building is located in the heart of Murrieta's Medical Complex. The property is maintained with "Pride of Ownership"

AMENITIES:

Excellent visibility & location
Close to Highways 15 and 215

Walking distance to hospital and restaurants
Elevator access from main lobby

Four (4) exam rooms with sinks
Large waiting room

Business office and break room
Private restroom

FOR ADDITIONAL INFORMATION CONTACT

Guy W. Excell of Howard B. Rosenthal
(951) 658-2559

DRE License No. 01138381

1600 East Florida Avenue, Suite 110

Hemet, California 92544

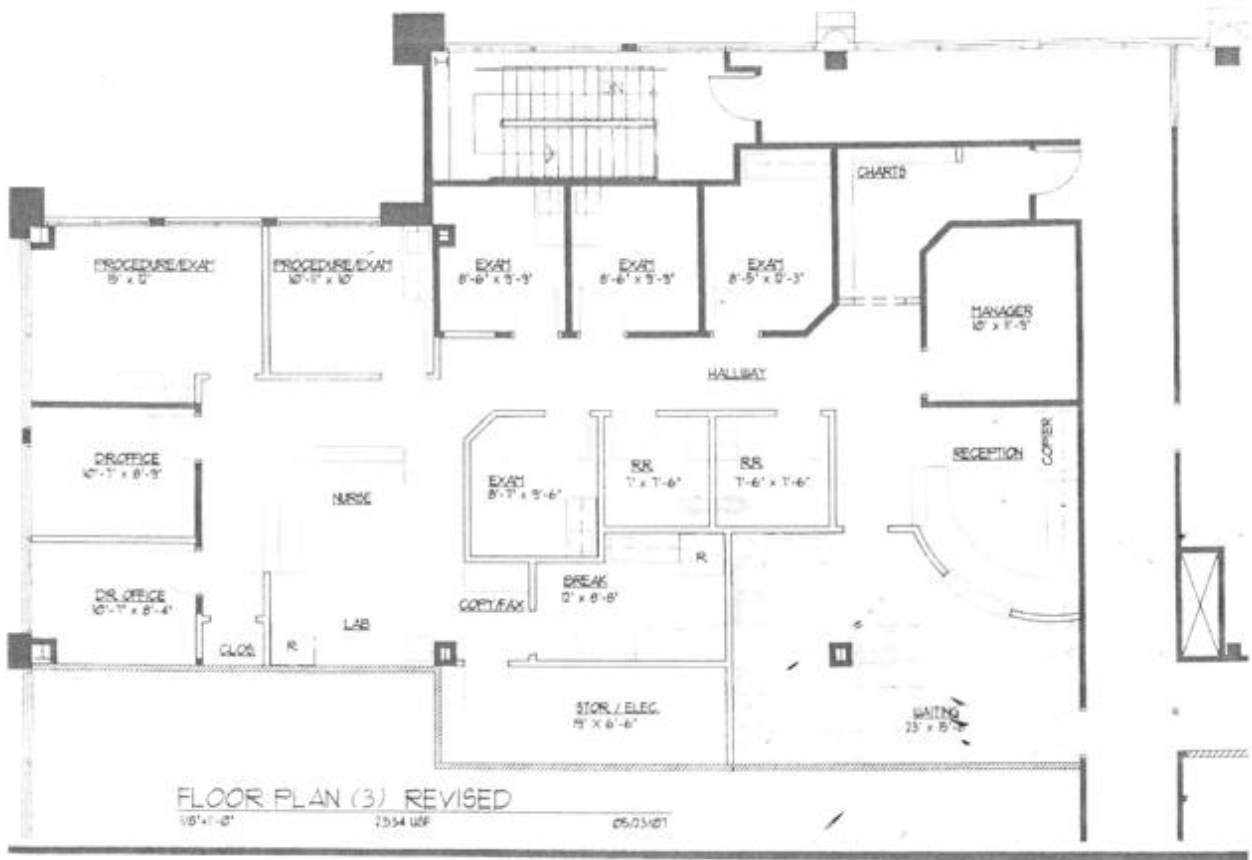
(951) 658-2559 • Fax: (951) 658-7690 email:

hrge@rosenthalexcell.com



Rosenthal & Excell
Commercial Real Estate Services

Murrieta Springs Medical Center
25395 Hancock Avenue, Suite 210, Murrieta, CA 92562



Suite 210
Floorplan (to be verified)

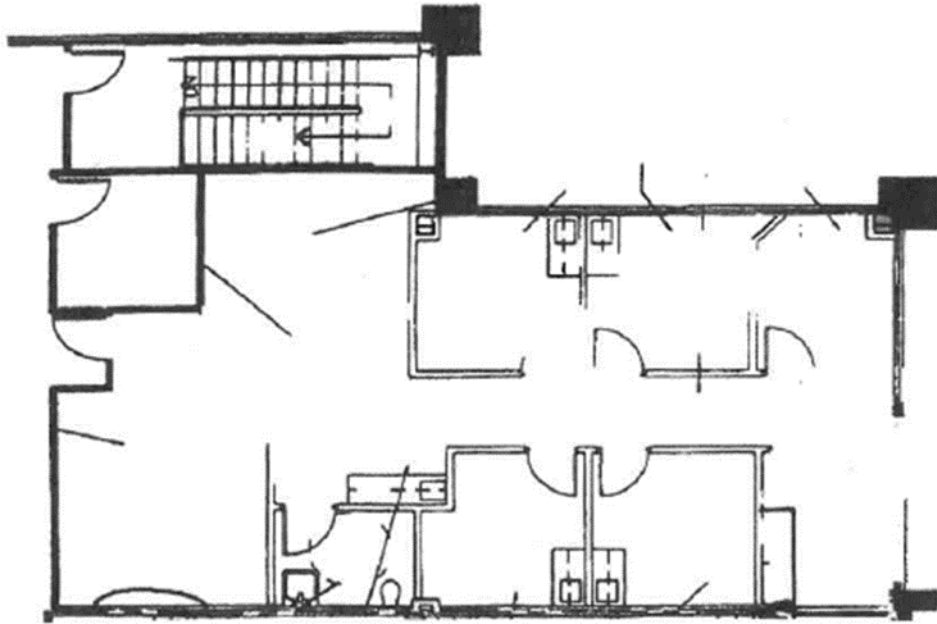
FOR ADDITIONAL INFORMATION CONTACT
Guy W. Excell of Howard B. Rosenthal
(951) 658-2559

DRE License No. 01138381
1600 East Florida Avenue, Suite 110
Hemet, California 92544
(951) 658-2559 • Fax: (951) 658-7690 email:
hrge@rosenthalexcell.com



Rosenthal & Excell
Commercial Real Estate Services

Murrieta Springs Medical Center
25395 Hancock Avenue, Suite 240, Murrieta, CA 92562



Suite 240
Floorplan (to be verified)

FOR ADDITIONAL INFORMATION CONTACT
Guy W. Excell of Howard B. Rosenthal
(951) 658-2559

DRE License No. 01138381
1600 East Florida Avenue, Suite 110
Hemet, California 92544
(951) 658-2559 • Fax: (951) 658-7690 email:
hrge@rosenthalexcell.com



Rosenthal & Excell
Commercial Real Estate Services

Photos of Suite 240



Business Office



Break Room



Hall Corridor



Doctor's Private Office

FOR ADDITIONAL INFORMATION CONTACT

Guy W. Excell of Howard B. Rosenthal

(951) 658-2559

DRE License No. 01138381

1600 East Florida Avenue, Suite 110

Hemet, California 92544

(951) 658-2559 • Fax: (951) 658-7690 email:

hrge@rosenthalexcell.com



Rosenthal & Excell
Commercial Real Estate Services

Photos of Suite 240



Exam Room



Exam Room



Exam Room



Exam Room

FOR ADDITIONAL INFORMATION CONTACT

Guy W. Excell of Howard B. Rosenthal

(951) 658-2559

DRE License No. 01138381

1600 East Florida Avenue, Suite 110

Hemet, California 92544

(951) 658-2559 • Fax: (951) 658-7690 email:

hрге@rosenthalexcell.com



Rosenthal & Excell
Commercial Real Estate Services

Photos of Suite 240



Waiting Room



Restroom in Suite

FOR ADDITIONAL INFORMATION CONTACT

Guy W. Excell of Howard B. Rosenthal

(951) 658-2559

DRE License No. 01138381

1600 East Florida Avenue, Suite 110

Hemet, California 92544

(951) 658-2559 ▪ Fax: (951) 658-7690 email:

hrge@rosenthalexcell.com



Rosenthal & Excell
Commercial Real Estate Services