



**PINNACLE
REALTY**
OF NEW YORK, LLC

EXCLUSIVE LISTING

FOR SALE



132 W SANDFORD BLVD.

MT VERNON, NY 10550

Value-Add Commercial on Sandford Blvd.

Two Existing Structures on an
11,000 Sq. Ft. Lot.

Type
Land / Retail / Investment



SQUARE FOOT

11,000_{SF}



ZONING

CB



ANNUAL R.E. TAXES

\$12,000_{APPROX.}



PARCEL ID

3046

BLOCK



1

LOT

PRICE

Upon Request

718-784-8282 / PINNACLERENY.COM

All information is from sources deemed reliable and is submitted subject to errors, omission, changes of price or other conditions, prior sale, rent and withdrawal without notice.

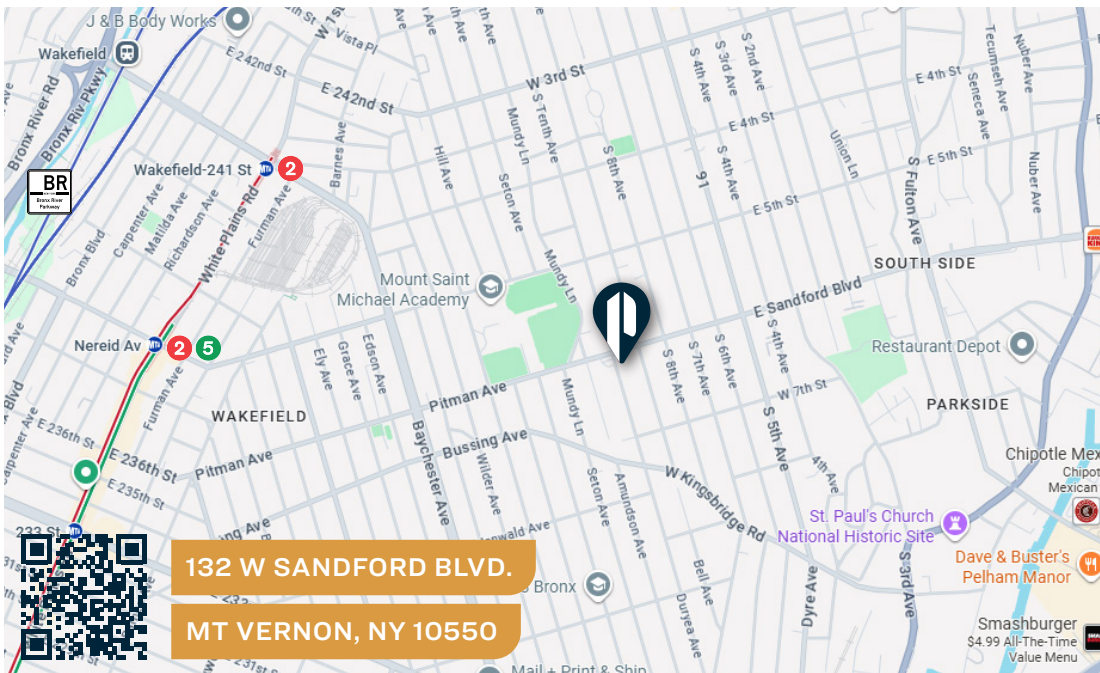
Property Overview

Features

- **Total Lot Size:** 11,000 Sq. Ft.
- 111' of Frontage on West Sanford Blvd
- 1,400 Sq. Ft. Public Assembly Building
- 1,250 Sq. Ft. Hand Car Wash
- Delivered Vacant

Ideal For

- Retail
- Parking
- Public Assembly
- Offices
- Medical
- Gas Station



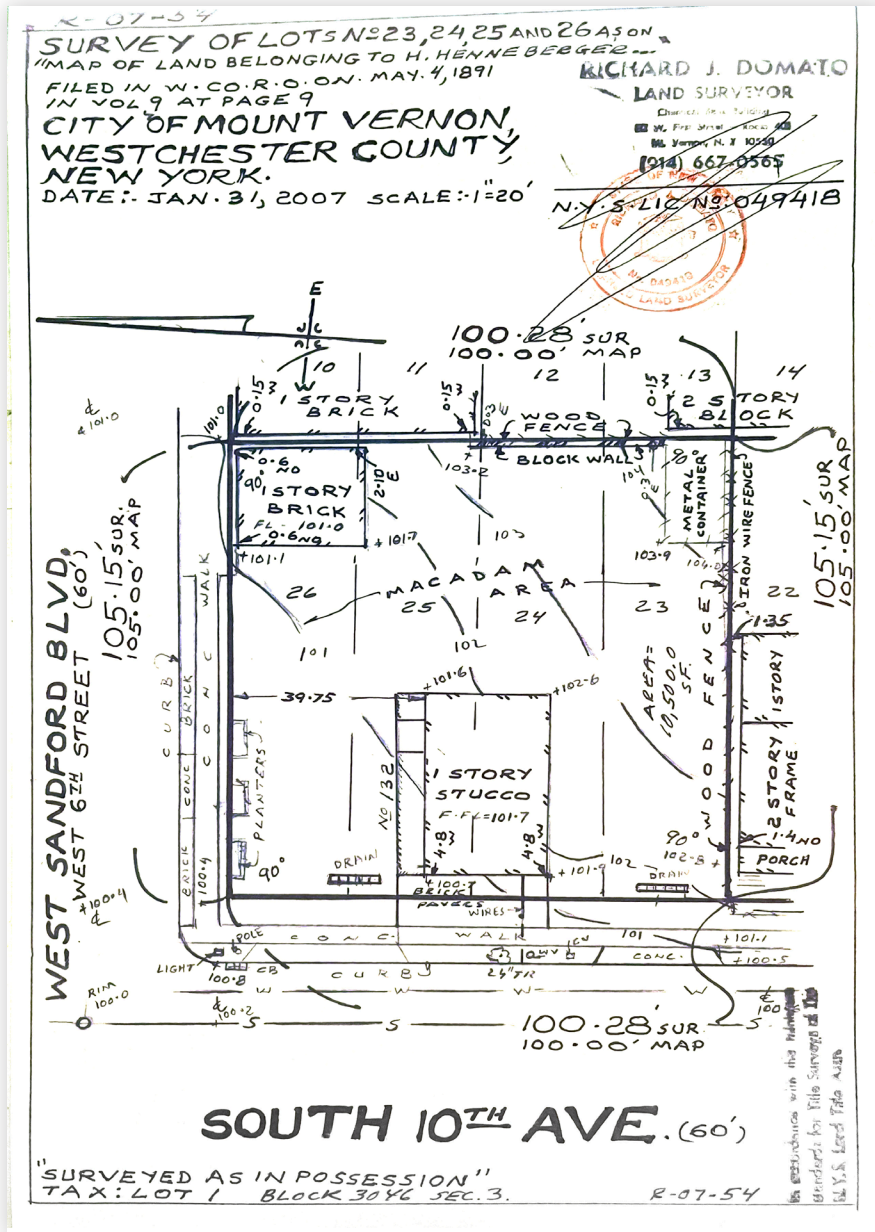
TRANSPORTATION

2 5 NEREID AVE
MT VERNON
WEST STATION
(METRO NORTH)

BRONX RIVER
PKWY

**0054: SANDFORD
BLVD @ S 8TH
AVE**
**BX16: PITMAN
AVE/ HILL AVE**

SURVEY



**PINNACLE
REALTY**
 OF NEW YORK, LLC

34-07 Steinway Street, Suite 202
 Long Island City, NY 11101
 718-784-8282
pinnaclereny.com

FOR MORE INFORMATION ABOUT THIS PROPERTY CONTACT EXCLUSIVE AGENTS:



ARIEL CASTELLANOS
 Associate Broker
acastellanos@pinnaclereny.com
 718-371-6412



MATT LOURENCO
 Salesperson
mlourenco@pinnaclereny.com
 347-218-8808



FEDERICO MAZZEO
 Salesperson
fmazzeo@pinnaclereny.com
 718-371-6424