

Commercial Land In Downtown Coachella

6TH ST, COACHELLA, CA 92236



PROPERTY DESCRIPTION

This land for sale is in a high profile location as it is south of the under construction County of Riverside's Social Services building, and on the same street as City Hall and the new city library. Downtown Coachella is in the midst of a transformation, and these parcels are in close proximity to the downtown area and Harrison Street, the two main arteries for the City of Coachella.

Currently with very limited inventory for new retail or office businesses wishing to locate in the city, this opportunity is ideal for both an owner/user and investor.

OFFERING SUMMARY

Sale Price:	\$595,000
Lot Size:	37,461 SF



CalBRE# 02051182 Information has been secured from sources we believe to be reliable, however, WILSON MEADE cannot guarantee its accuracy.



FOR MORE INFORMATION CONTACT:

NOEL RAMOS

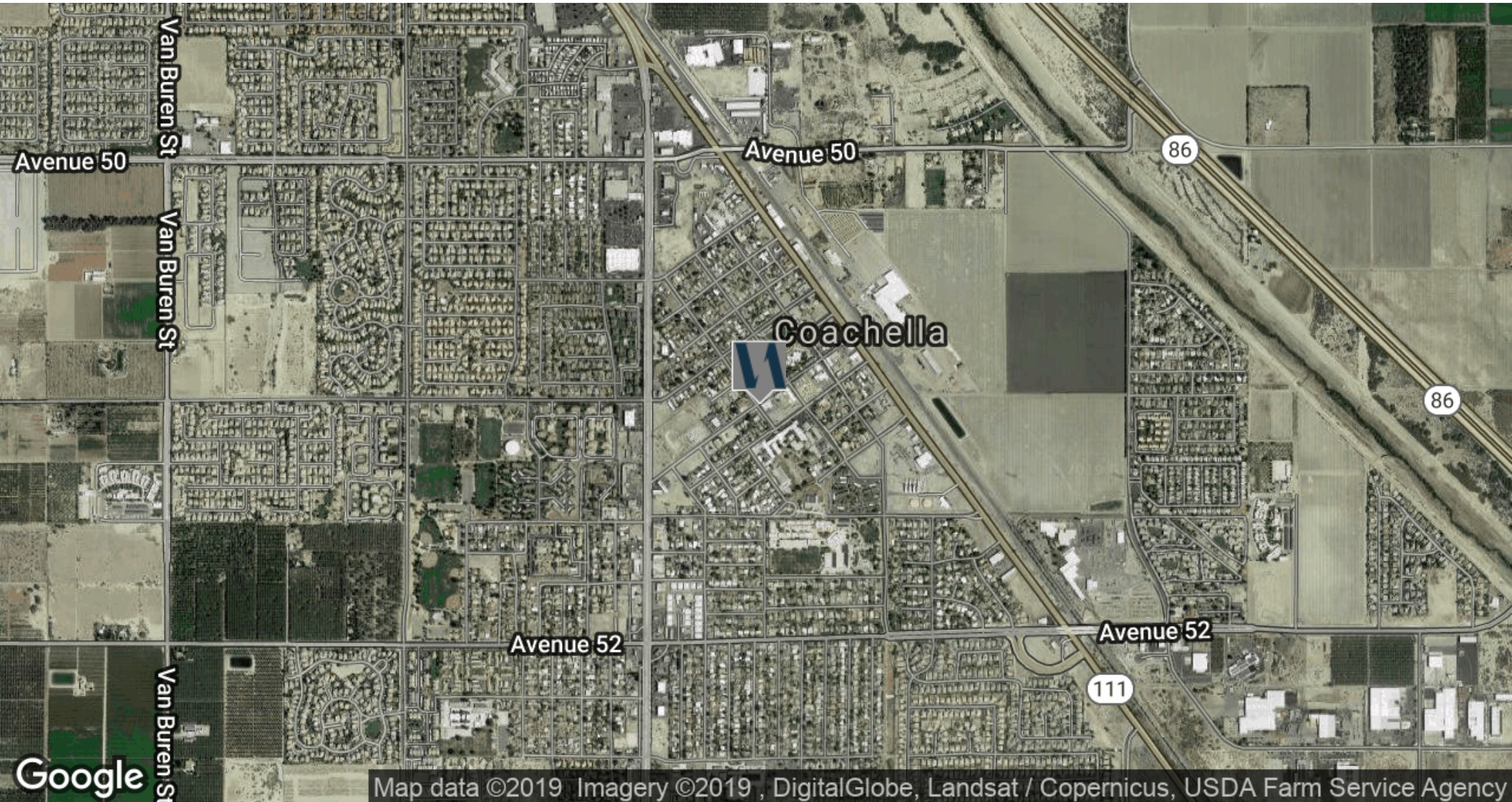
760.779.8831

nramos@wilson-meade.com

CalBRE #01338562

Commercial Land In Downtown Coachella

6TH ST, COACHELLA, CA 92236



CalBRE# 02051182 Information has been secured from sources we believe to be reliable, however, WILSON MEADE cannot guarantee its accuracy.

FOR MORE INFORMATION CONTACT:

NOEL RAMOS

760.779.8831

nramos@wilson-meade.com

CalBRE #01338562

