



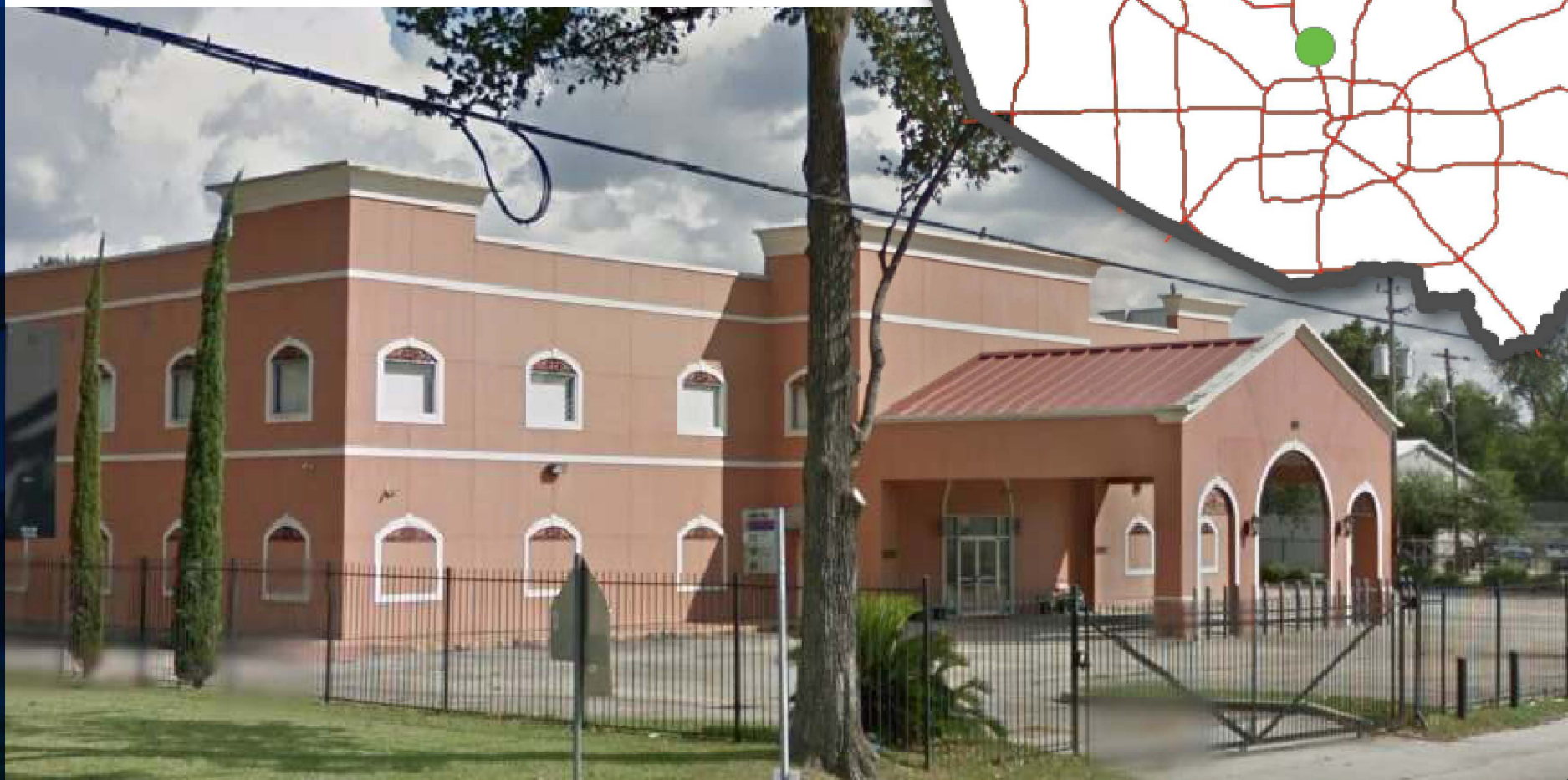
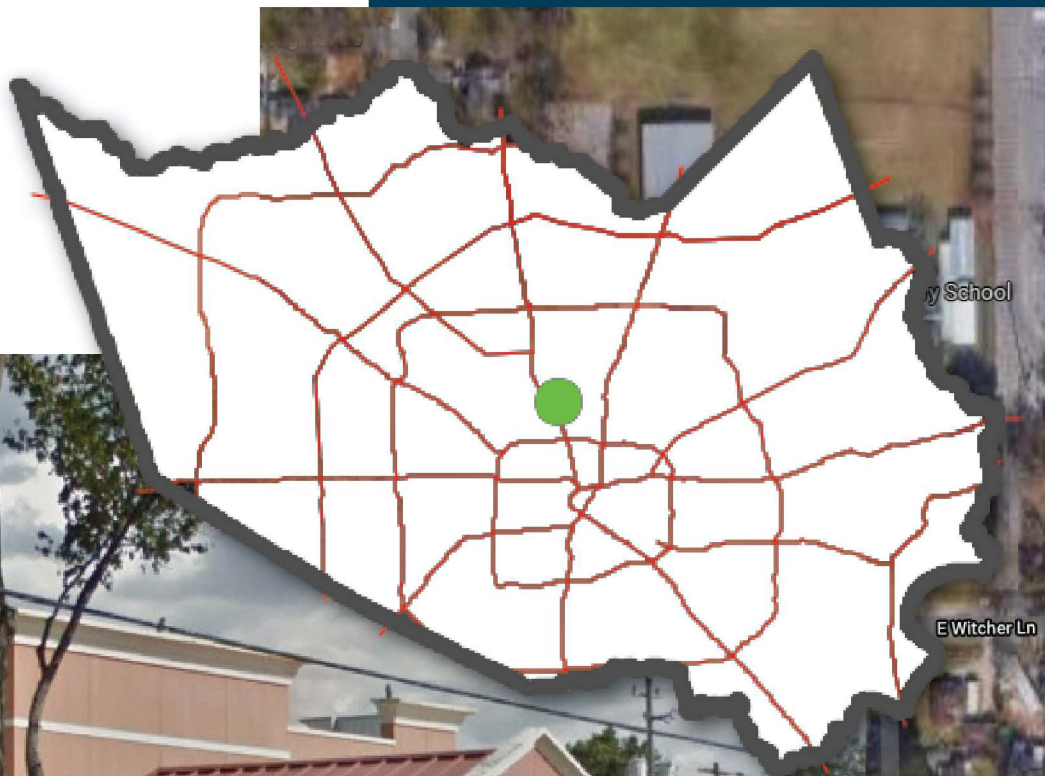
5800 Airline Drive • Houston, TX 77076

Event, Reception and Office Space • For Lease



5800 Airline Drive • Houston, TX 77076

Located in the Northline Neighborhood. Northline is a large neighborhood that sits directly north of downtown Houston, and is considered a working-class, single-family home community mixed with industrial lots. The area has experienced recent revitalization with an expansive resurgence of new real estate developments.





Event Space • For Lease

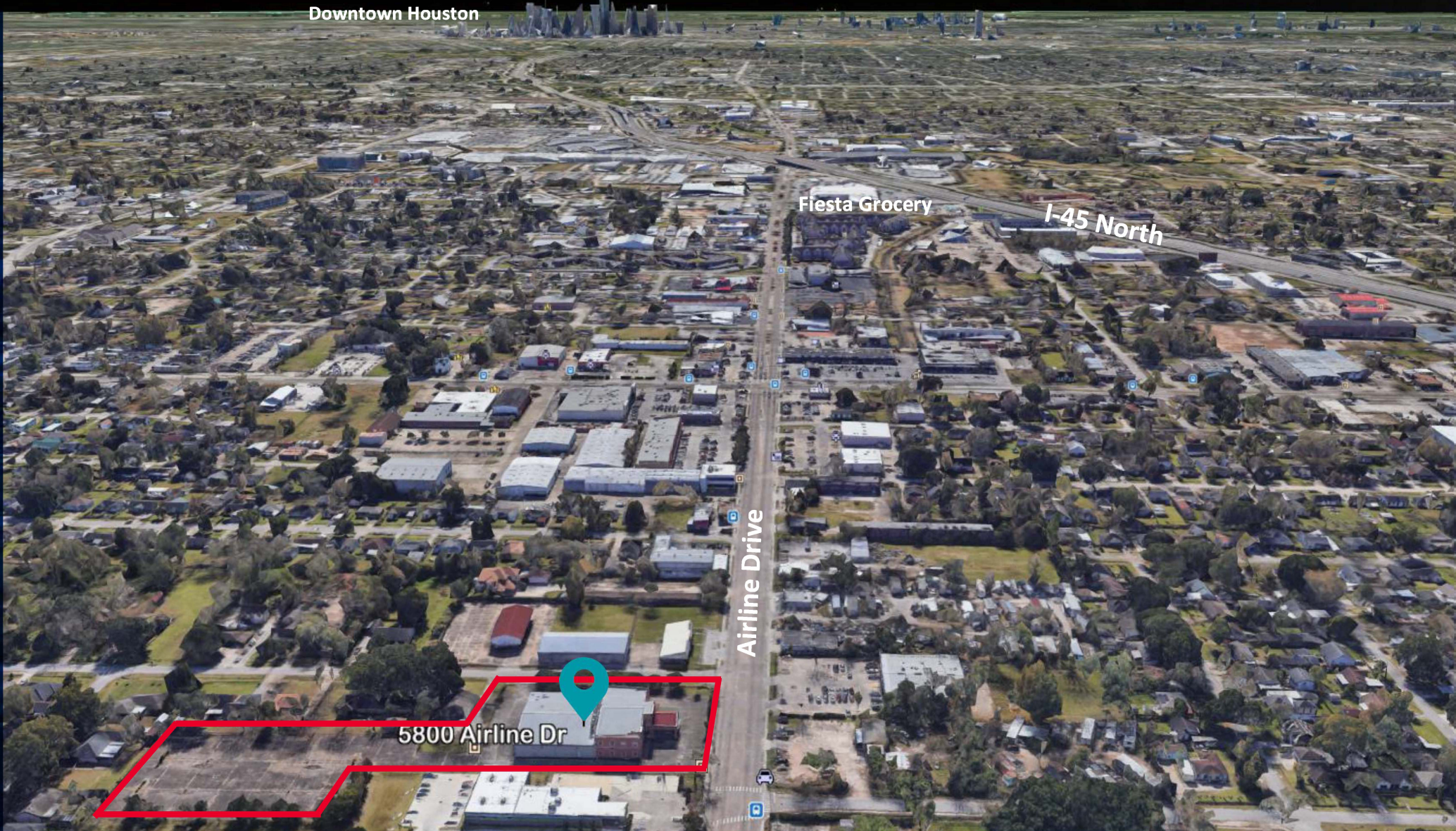
Event Space..... 27,000-SF
Land..... 2.76 Acres

Don't miss the opportunity to lease or buy this gorgeous building! The possibilities are endless with high-end interior finishes and open spaces — perfect for large gatherings. Move-in ready!

The space is adaptable for:

- Banquet Hall / Special Events
- Church / Family Center
- Retail / Showroom
- Restaurant / Bistro
- Office / Industrial
- Classroom / Data Center

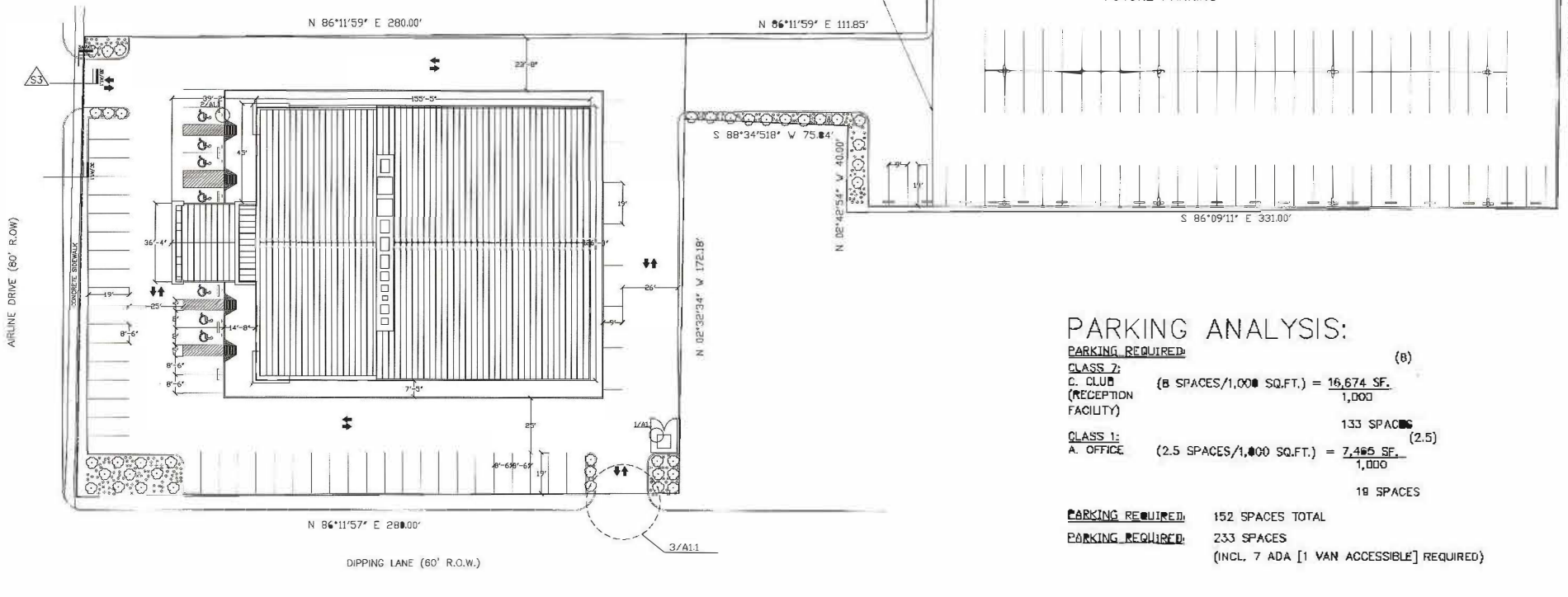
Downtown Houston



property aerial



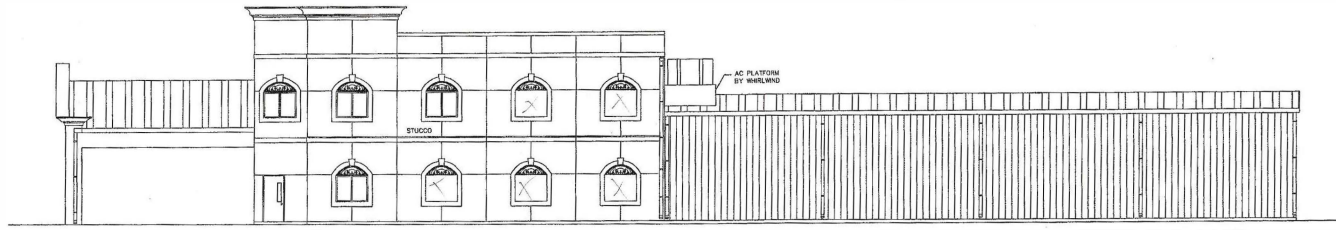
front façade



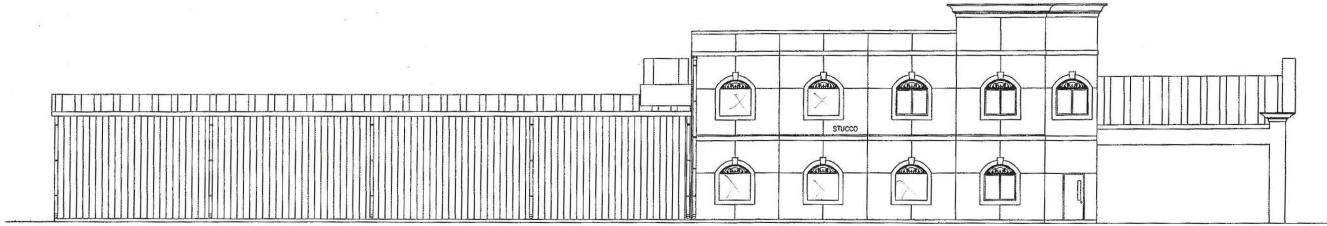
PARKING ANALYSIS:

PARKING REQUIRED:		(b)
CLASS 2:		
C. CLUB	(8 SPACES/1,000 SQ.FT.) = 16,674 SF.	
(RECEPTION FACILITY)	1,000	
		133 SPACES
CLASS 1:		(2.5)
A. OFFICE	(2.5 SPACES/1,000 SQ.FT.) = 7,485 SF.	
	1,000	
		18 SPACES
PARKING REQUIRED:	152 SPACES TOTAL	
PARKING REQUIRED:	233 SPACES	
	(INCL. 7 ADA [1 VAN ACCESSIBLE] REQUIRED)	

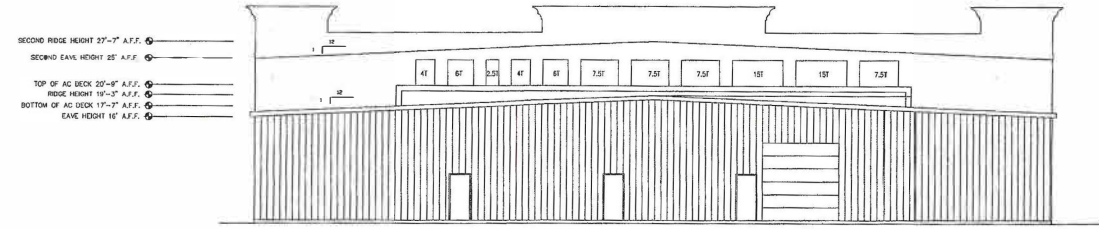
site plan



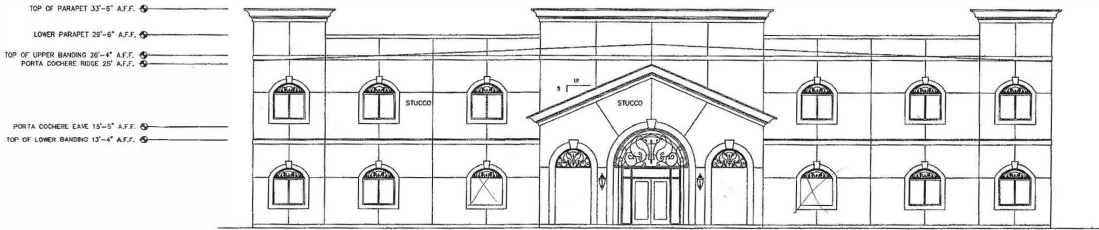
4 RIGHT ELEVATION
1/8"=1'-0"



3 LEFT ELEVATION
1/8"=1'-0"



2 BACK ELEVATION
1/8"=1'-0"



1 FRONT ELEVATION
1/8"=1'-0"

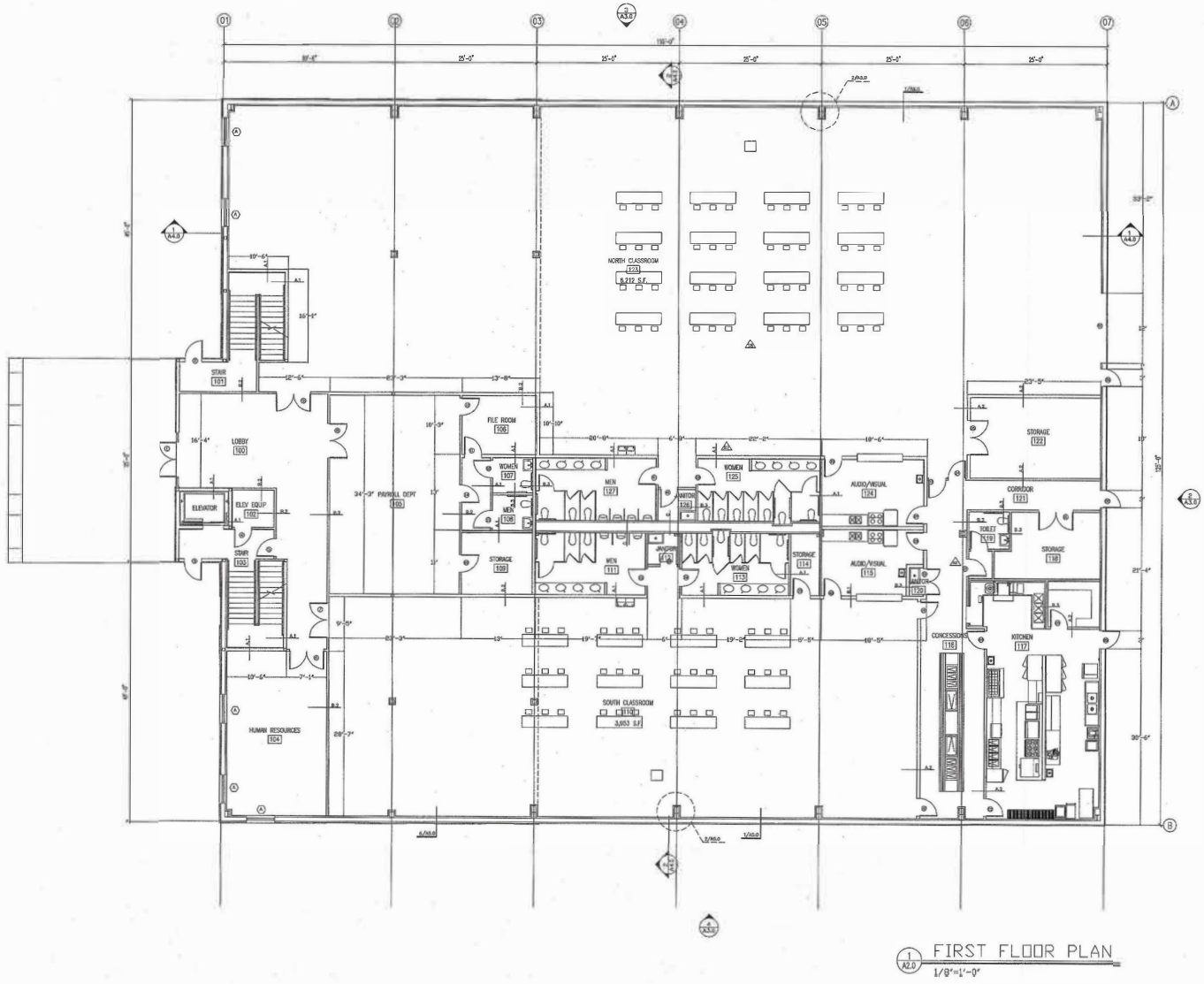
- SECOND RIDGE HEIGHT 27'-7" A.F.F.
- SECOND EAVE HEIGHT 25' A.F.F.
- TOP OF AC DECK 20'-6" A.F.F.
- RIDGE HEIGHT 19'-3" A.F.F.
- BOTTOM OF AC DECK 17'-3" A.F.F.
- EAVE HEIGHT 16' A.F.F.

NOTE:
DOWNSPOUTS TO BE 4"x4" WITH 14 GA. VALLEY GUTTERS. REFER TO WHIRLWIND STEEL DRAWINGS PAGE E-1.

- TOP OF PARAPET 33'-6" A.F.F.
- LOWER PARAPET 29'-6" A.F.F.
- TOP OF UPPER BANDING 26'-4" A.F.F.
- PORTA COCHERE RIDGE 25' A.F.F.
- PORTA COCHERE EAVE 15'-5" A.F.F.
- TOP OF LOWER BANDING 13'-4" A.F.F.

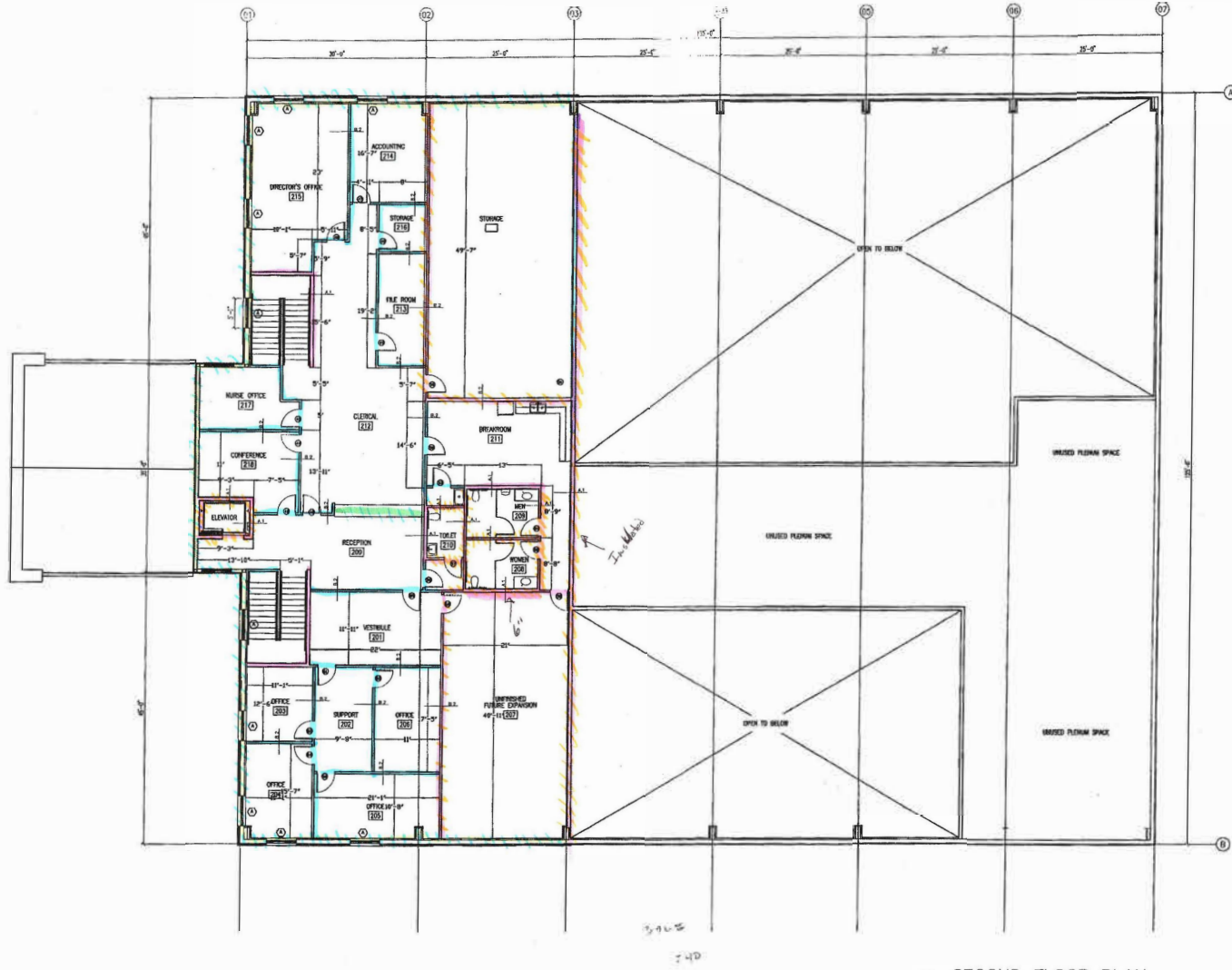


building elevations



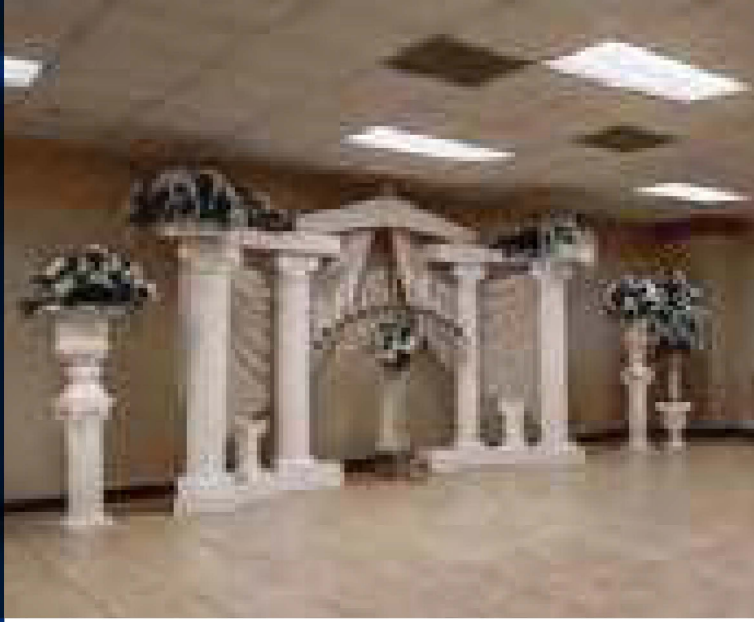
1 FIRST FLOOR PLAN
1/8"=1'-0"

floor plan • floor one



1 SECOND FLOOR PLAN
1/8"=1'-0"

floor plan • floor two



Event Space • Features:

- Two Stories
- Two Ballrooms / Meeting Areas
- Chapel (Max Capacity 125)
- Small Ballroom (Max Capacity 220)
- Large Ballroom (Max Capacity 500)
- Bridal Suites
- Fully-Equipped Commercial Kitchen
- Full-Service Buffet Serving Areas
- 200+ Parking Spaces

* Use of all equipment negotiable (i.e. chairs, tables, DJ equipment, decorations, catering equipment, etc.)

commercial kitchen





ballrooms

**5800
Airline
Drive**

