



1024 FIRST STREET SNOHOMISH, WA

LAURA HUNTINGTON
PRINCIPAL - MANAGING BROKER
PHONE: (425) 754 - 4518
LHUNTINGTON@WORKMANRES.COM

DEVERIE WOOD
ASSOCIATE BROKER
PHONE: (206) 920-2898
DWOOD@WORKMANRES.COM



CBA#34250590

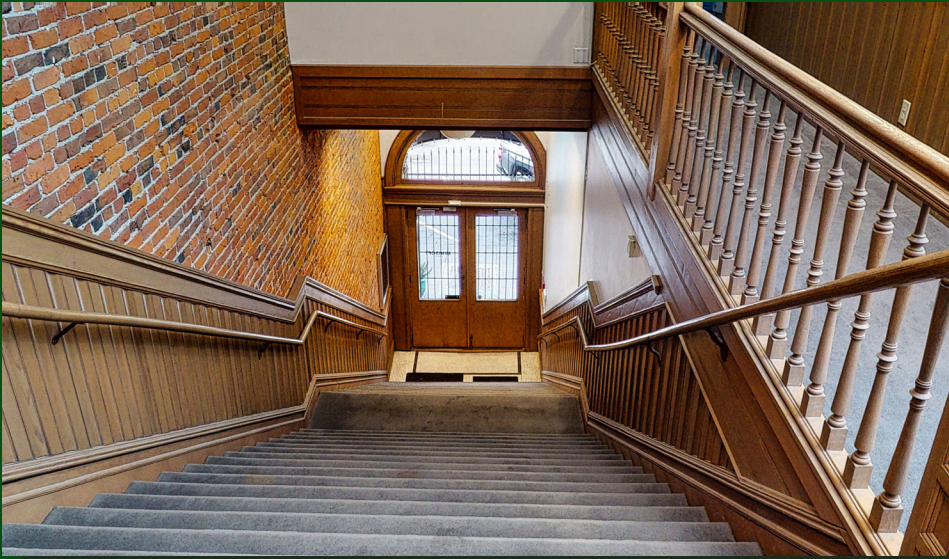


workmanres.com

WorkmanReal Estate Services | 922 First St, Ste A, Snohomish WA 98290 | 425-754-4518

1024 FIRST STREET

SNOHOMISH, WA 98290



CBA#34250590



workmanres.com

WorkmanReal Estate Services | 922 First St, Ste A., Snohomish WA 98290 | 425-754-4518

1024 FIRST STREET

SNOHOMISH, WA 98290

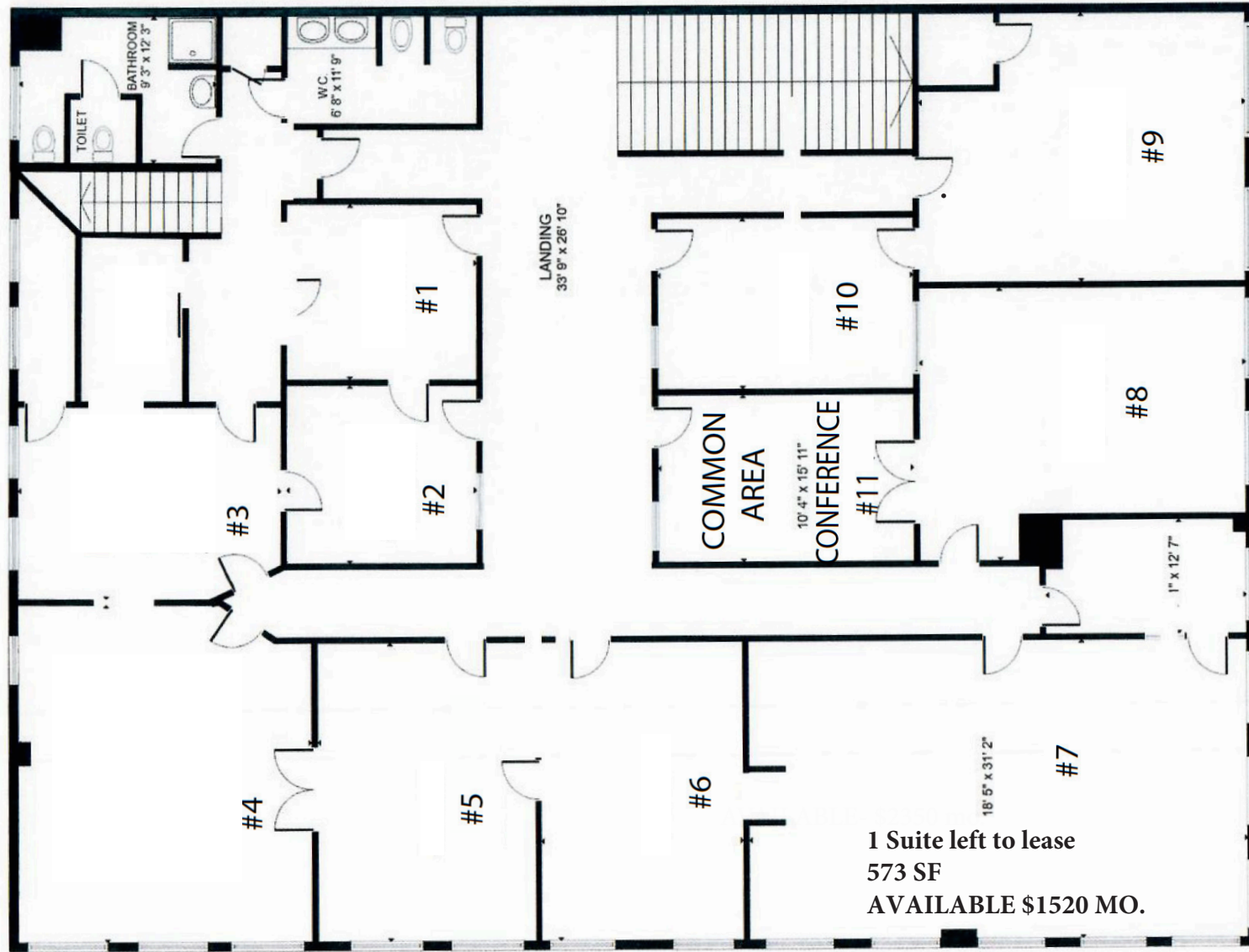


CBA#34250590



workmanres.com

WorkmanReal Estate Services | 922 First St, Ste A, Snohomish WA 98290 | 425-754-4518



1 Suite left to lease
573 SF
AVAILABLE \$1520 MO.



OFFERED FOR LEASE

HISTORIC MARKS BUILDING CORPORATE OFFICE SUITE AVAILABLE FOR LEASE

***OWNER IS OFFERING A PRICE DROP TO LEASE
UP THE LAST EXECUTIVE OFFICE ON FLOOR
THREE**

*ENJOY THE VIEW FROM THIS SW CORNER SUITE.
FRONT DOOR IS ON FIRST STREET WITH STAIRS TO
THE THIRD FLOOR ENTRY/RECEPTION AREA.

*SECURE ELEVATOR TO THE THIRD FLOOR FROM THE
FIRST STREET ENTRY THROUGH THE RETAIL MALL
LEVEL.

*VIEWS OF THE SNOHOMISH RIVER AND VALLEY,
CASCADE MOUNTAINS AND HISTORIC DOWNTOWN
SNOHOMISH.

*FEATURES INCLUDE HIGH CEILINGS, ORIGINAL
WINDOWS AND DOORS, ACCESS TO CONFERENCE
AREA, FORMAL ATRIUM ENTRY, EXPOSED BRICK WALLS
AND HIGH SPEED INTERNET. 573 SF CORNER OFFICE
**AVAILABLE NOW AT \$1250.00 PER MONTH PLUS
TRIPLE NET RENT AT \$270.00
TOTALS \$1520.00 PER MONTH.**

CALL LAURA FOR A TOUR! 425-754-4518



**BUILDING
TOTAL:19502 SF
LOT SIZE: .11 AC**

CBA#34250590



workmanres.com

WorkmanReal Estate Services | 922 First St, Suite A, Snohomish WA 98290 | 425-754-4518