

# 1715 Ironhorse Dr, Ste 120

Sublease through 3/31/2027

1715 Ironhorse Drive, Suite 120  
Longmont, Colorado 80501  
[Click Here to View Our Website](#)

Office Space Available Across from Longs Peak Hospital





# Excellent Location

## Across from UCHealth Longs Peak Hospital

Built in 2000 is this beautiful 50,000 SF building. CBRE is pleased to offer Suite 120, a 2,178 SF lab space for sublease. The sublease is available through 3/31/2027.

It is situated just 2.5 miles from all of the retail, office, and restaurant space that downtown Longmont has to offer. It is also just 4 miles from the I-25 and Ken Pratt Blvd (Hwy 119) interchange.

Some great neighbors in the building include DaVita Kidney Care, Sun Flower Spa, Aspen Gold Development, Polish, and more!

# 2,178

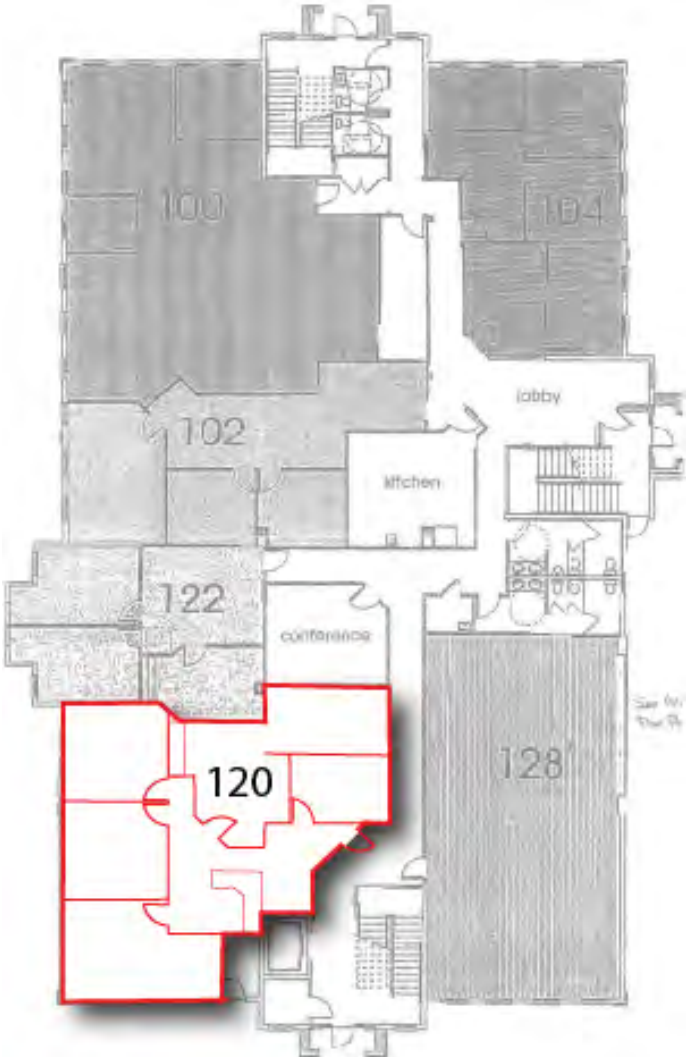
Square Feet

# \$13

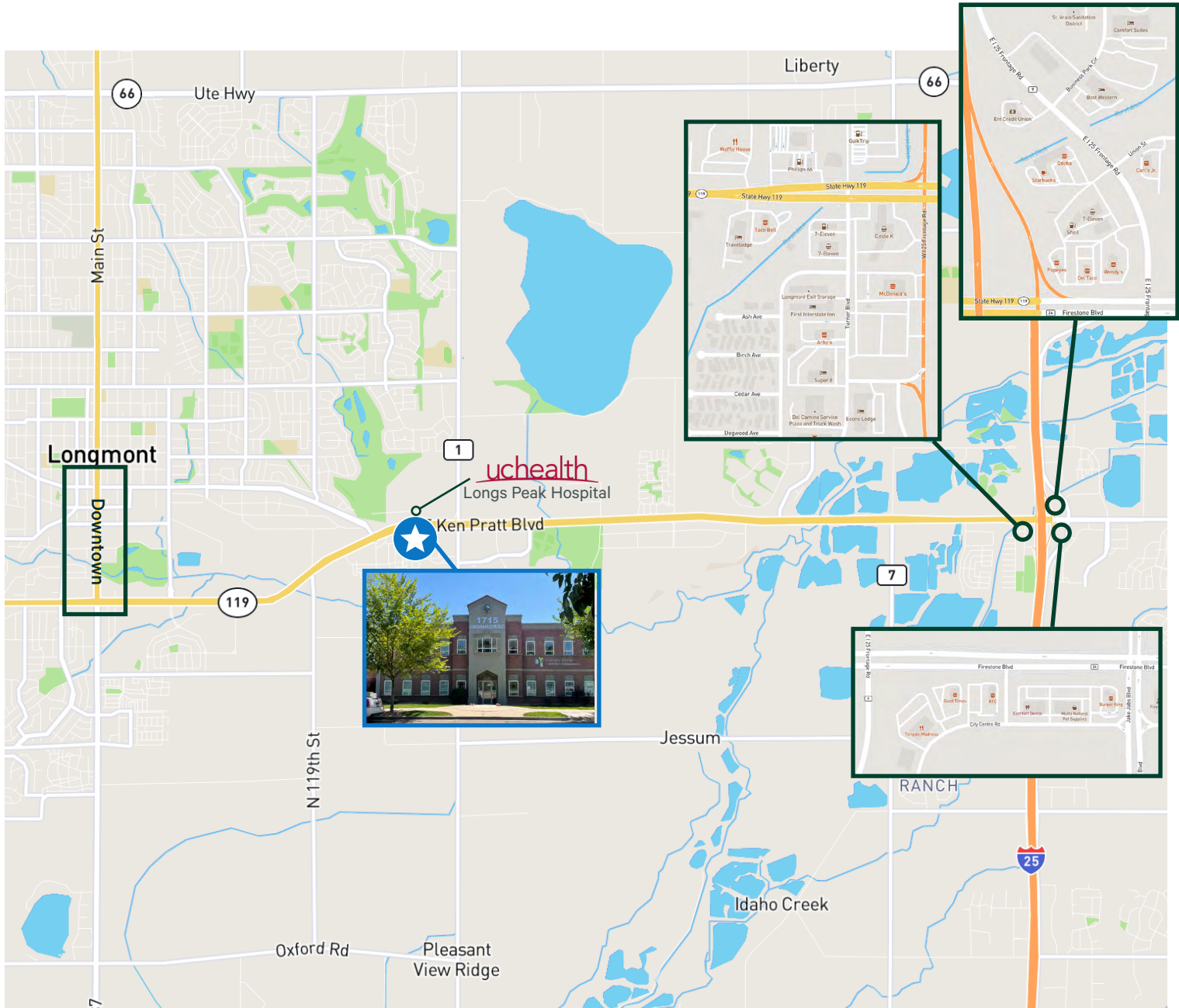
PSF NNN Base Rent

# \$12.22

PSF Estimated NNN's







## Contact Us

**Steve Stoecker**  
Senior Associate  
+1 970 372 3859  
steve.stoecker@cbre.com

© 2023 CBRE, Inc. All rights reserved. This information has been obtained from sources believed reliable, but has not been verified for accuracy or completeness. You should conduct a careful, independent investigation of the property and verify all information. Any reliance on this information is solely at your own risk. CBRE and the CBRE logo are service marks of CBRE, Inc. All other marks displayed on this document are the property of their respective owners, and the use of such logos does not imply any affiliation with or endorsement of CBRE. Photos herein are the property of their respective owners. Use of these images without the express written consent of the owner is prohibited.