



Available For Sublease

89 Spring Run Road Ext, Coraopolis, PA 15108

 **JLL** SEE A BRIGHTER WAY

Building 7 Specifications

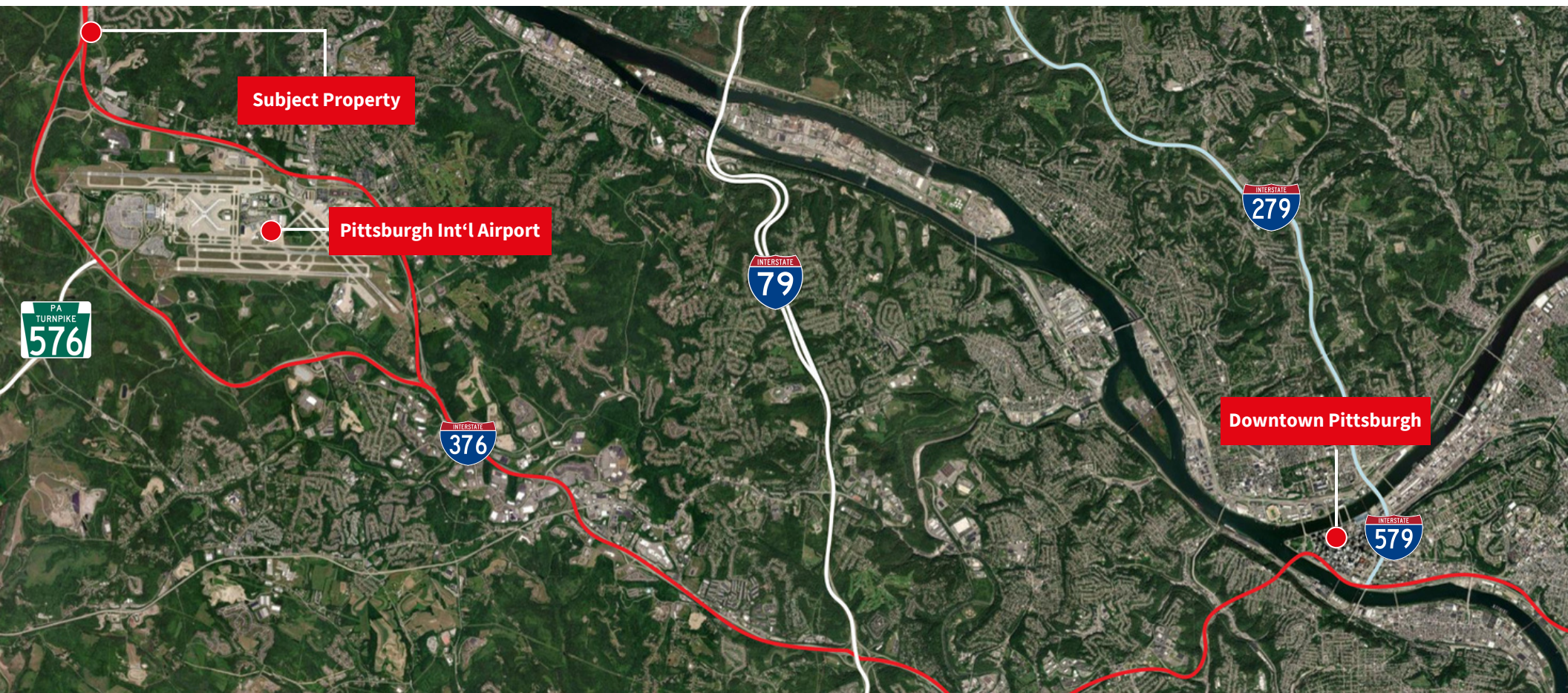
Address	89 Spring Run Road Ext, Coraopolis, PA 15108 (Bldg 7)
Building Size	46,800 SF
Available Size	46,800 SF
Site Size	4.6 AC
Docks	2 dock-high doors with levelers (expandable)
Drive-in Doors	1 ramped drive-in door
Clear Height	19' – 27'10"
Fire Supression	ESFR
Electric Service	3 Phase; 480 V; 800AMP
Parking	87 spaces (1.86 spaces / 1,000 SF)
Sublease Term	Through March 31, 2027





Location	Distance
I-376	2 miles
Airport	4 miles
I-576	4 miles
I-79	14 miles
Pittsburgh	21 miles

- Class A, standalone industrial/flex opportunity.
- Abundant parking opportunity
- Established industrial park setting
- Proximate to the Pittsburgh International Airport
- Excellent connectivity to the regional highway system.





Contact Us

Greg Hopkins

Senior Vice President

greg.hopkins@jll.com

+1 (412) 770 5295

Although information has been obtained from sources deemed reliable, JLL does not make any guarantees, warranties or representations, express or implied, as to the completeness or accuracy as to the information contained herein. Any projections, opinions, assumptions or estimates used are for example only. There may be differences between projected and actual results, and those differences may be material. JLL does not accept any liability for any loss or damage suffered by any party resulting from reliance on this information. If the recipient of this information has signed a confidentiality agreement with JLL regarding this matter, this information is subject to the terms of that agreement. ©2024. Jones Lang LaSalle IP, Inc. All rights reserved.