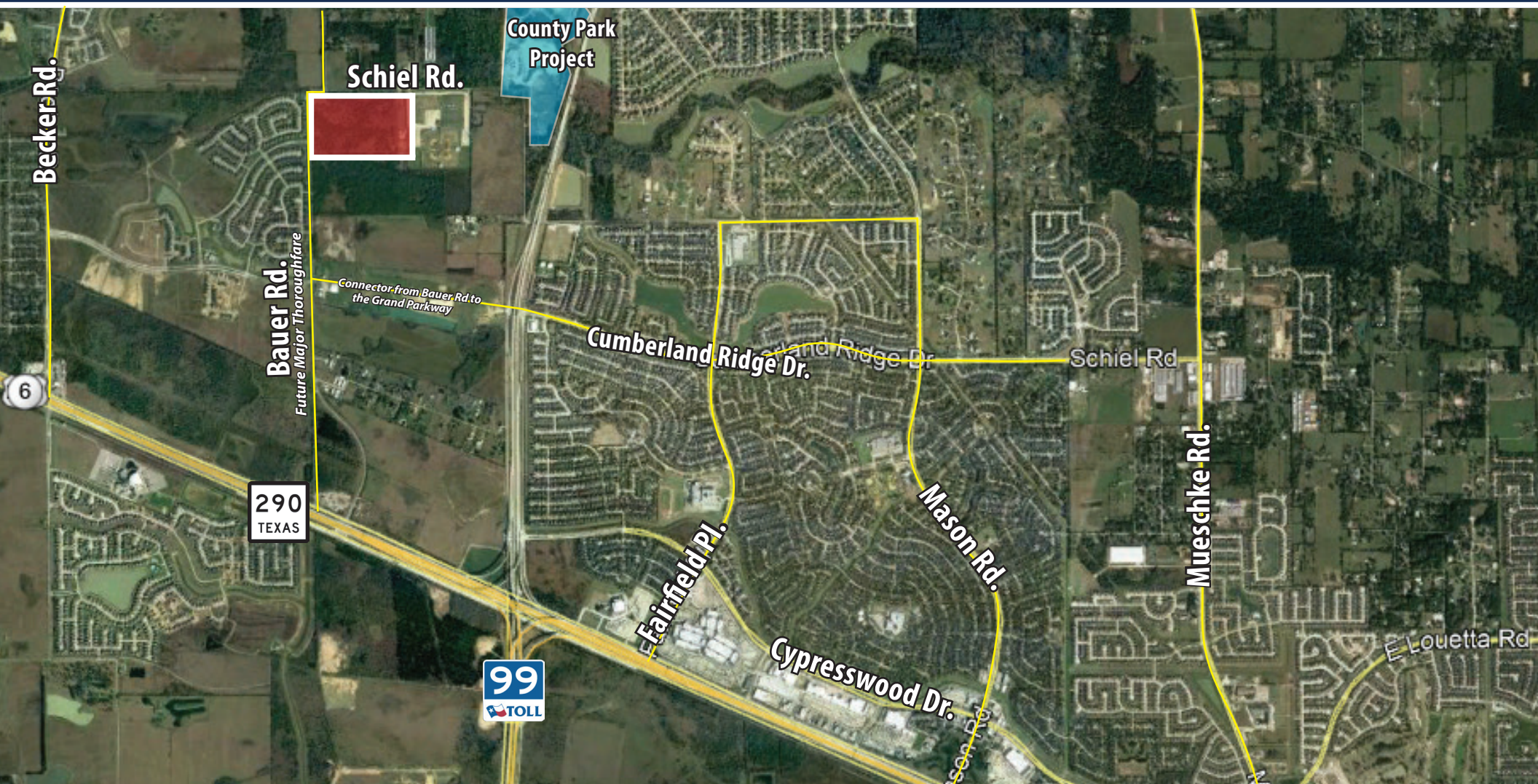


50 ACRES FOR SALE - CYPRESS

BAUER RD. @ SCHIEL RD., CYPRESS, TX 77433



PROPERTY HIGHLIGHTS:

- Utilities available
- 1,700 ft frontage on Bauer and Schiel
- Adjacent to Cy-Fair Sports Complex and Schiel Park
- Outstanding demographics: Average household income within 1 mile radius - \$115,000
- Easy access to Hwy 290 and Grand Parkway
- Call broker for pricing

FOR MORE INFORMATION:

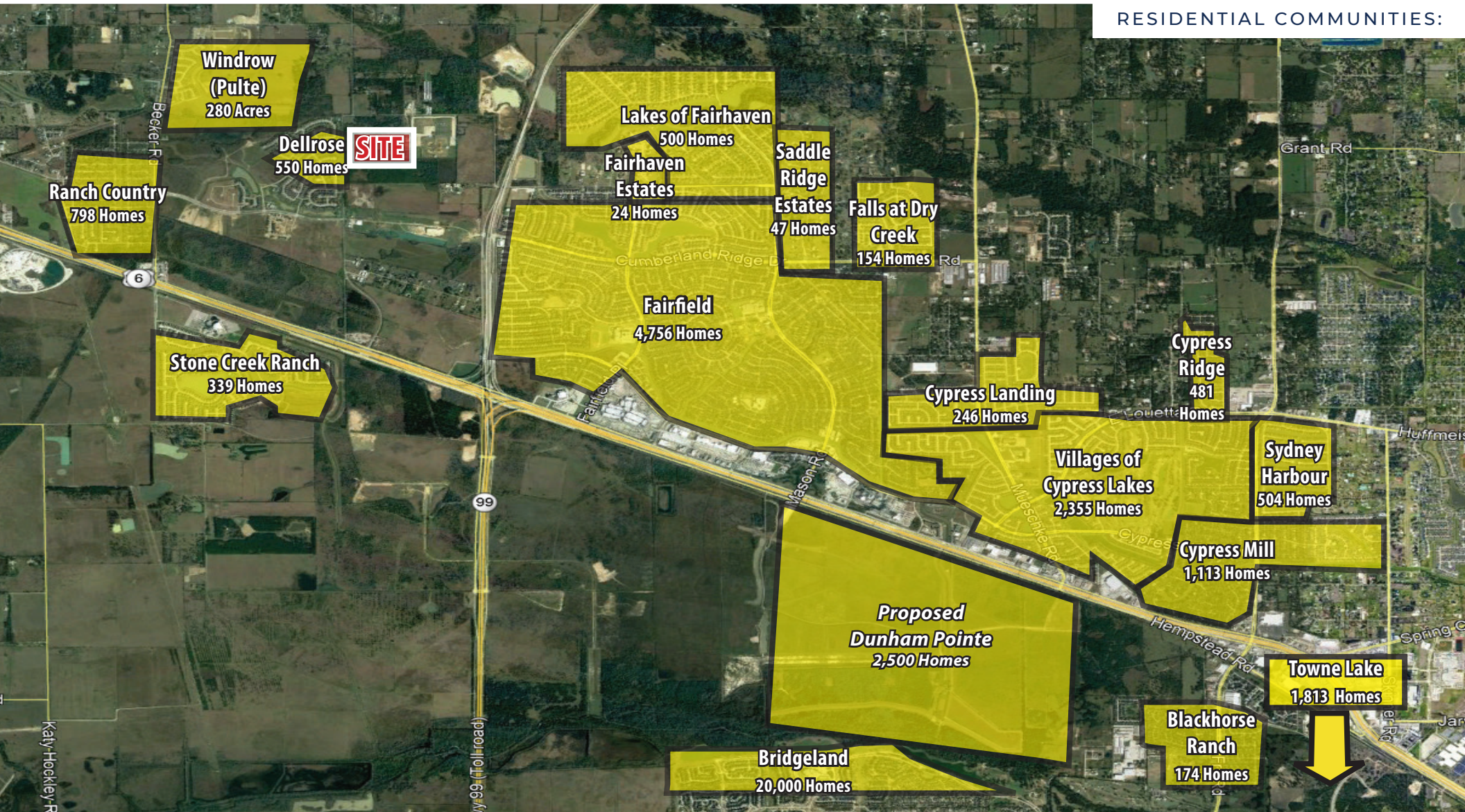
RYAN KING
SENIOR VICE PRESIDENT
713-826-905
RKING@MHWRE.COM

MHW

50 ACRES FOR SALE - CYPRESS

BAUER RD. @ SCHIEL RD., CYPRESS, TX 77433

RESIDENTIAL COMMUNITIES:



FOR MORE INFORMATION:

RYAN KING
SENIOR VICE PRESIDENT
713-826-905
RKING@MHWRE.COM

WWW.MHWRE.COM

MHW

50 ACRES FOR SALE - CYPRESS

BAUER RD. @ SCHIEL RD., CYPRESS, TX 77433

MAJOR JOB INFLUENCERS:



Expected to deliver \$3.9 billion in annual economic impact, create 7,000 direct jobs and more than 11,000 indirect jobs.



This facility is FedEx's largest in Texas and will likely handle as many as 1 million packages per day. It's expected to create more than 500 new jobs in the Cypress/Katy area.

FOR MORE INFORMATION:

RYAN KING
SENIOR VICE PRESIDENT
713-826-905
RKING@MHWRE.COM

WWW.MHWRE.COM

MHW

50 ACRES FOR SALE - CYPRESS

BAUER RD. @ SCHIEL RD., CYPRESS, TX 77433

NEARBY RETAIL



FOR MORE INFORMATION:

RYAN KING
SENIOR VICE PRESIDENT
713-826-905
RKING@MHWRE.COM

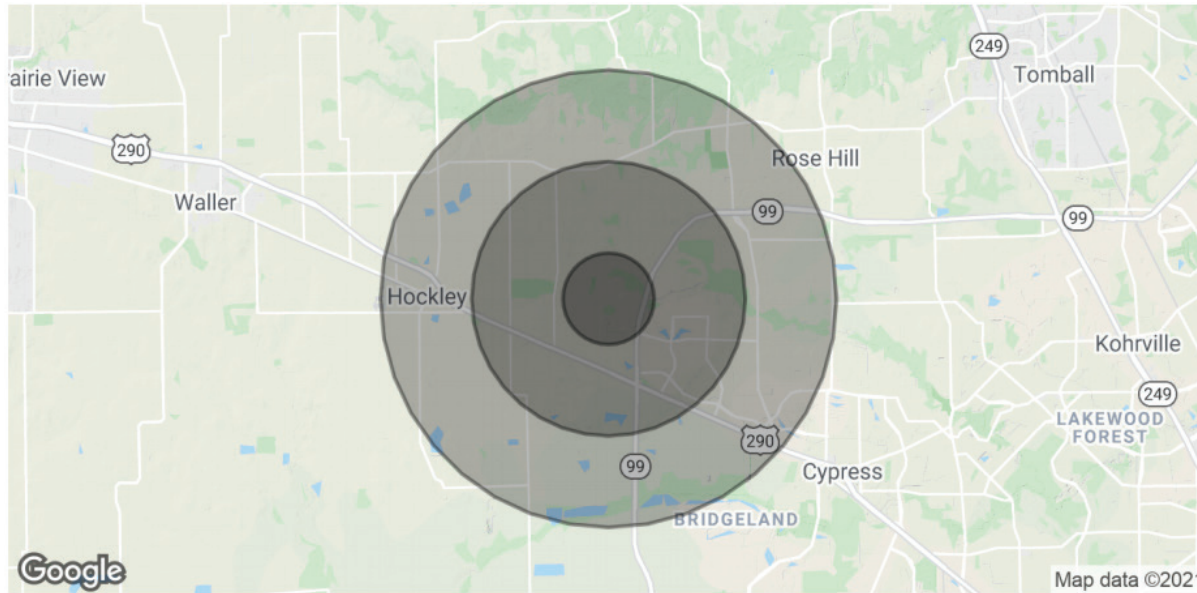
WWW.MHWRE.COM

MHW

50 ACRES FOR SALE - CYPRESS

BAUER RD. @ SCHIEL RD., CYPRESS, TX 77433

DEMOGRAPHICS:



POPULATION	1 MILE	3 MILES	5 MILES
Total Population	2,788	13,723	28,168
Average age	33.4	33.6	32.9
Average age (Male)	32.9	33.1	32.1
Average age (Female)	34.0	34.3	33.8
HOUSEHOLDS & INCOME	1 MILE	3 MILES	5 MILES
Total households	855	4,258	8,729
# of persons per HH	3.3	3.2	3.2
Average HH income	\$114,263	\$112,201	\$106,883
Average house value	\$171,608	\$208,958	\$210,484

* Demographic data derived from 2010 US Census

FOR MORE INFORMATION:

RYAN KING
SENIOR VICE PRESIDENT
713-826-905
RKING@MHWRE.COM

WWW.MHWRE.COM

MHW