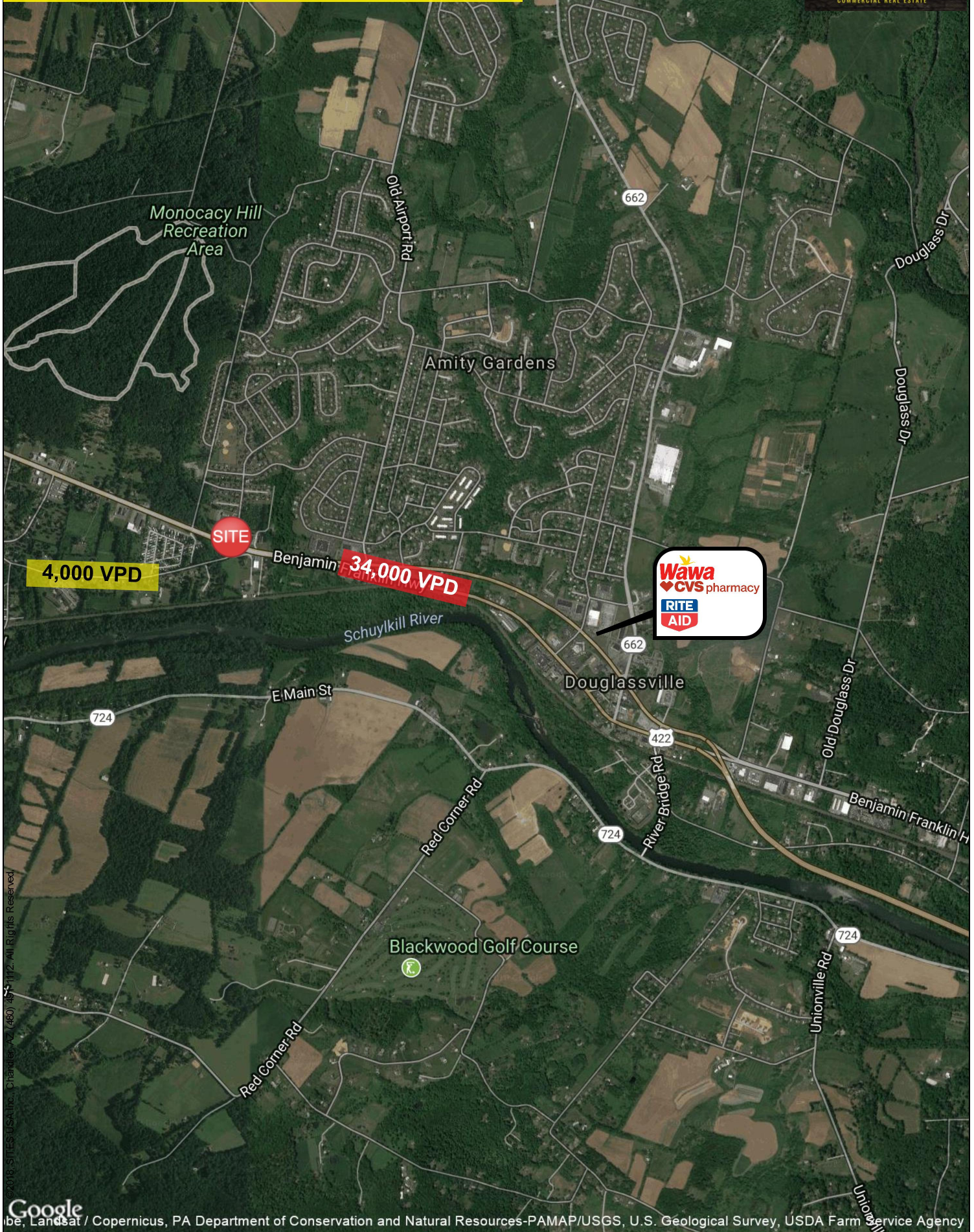
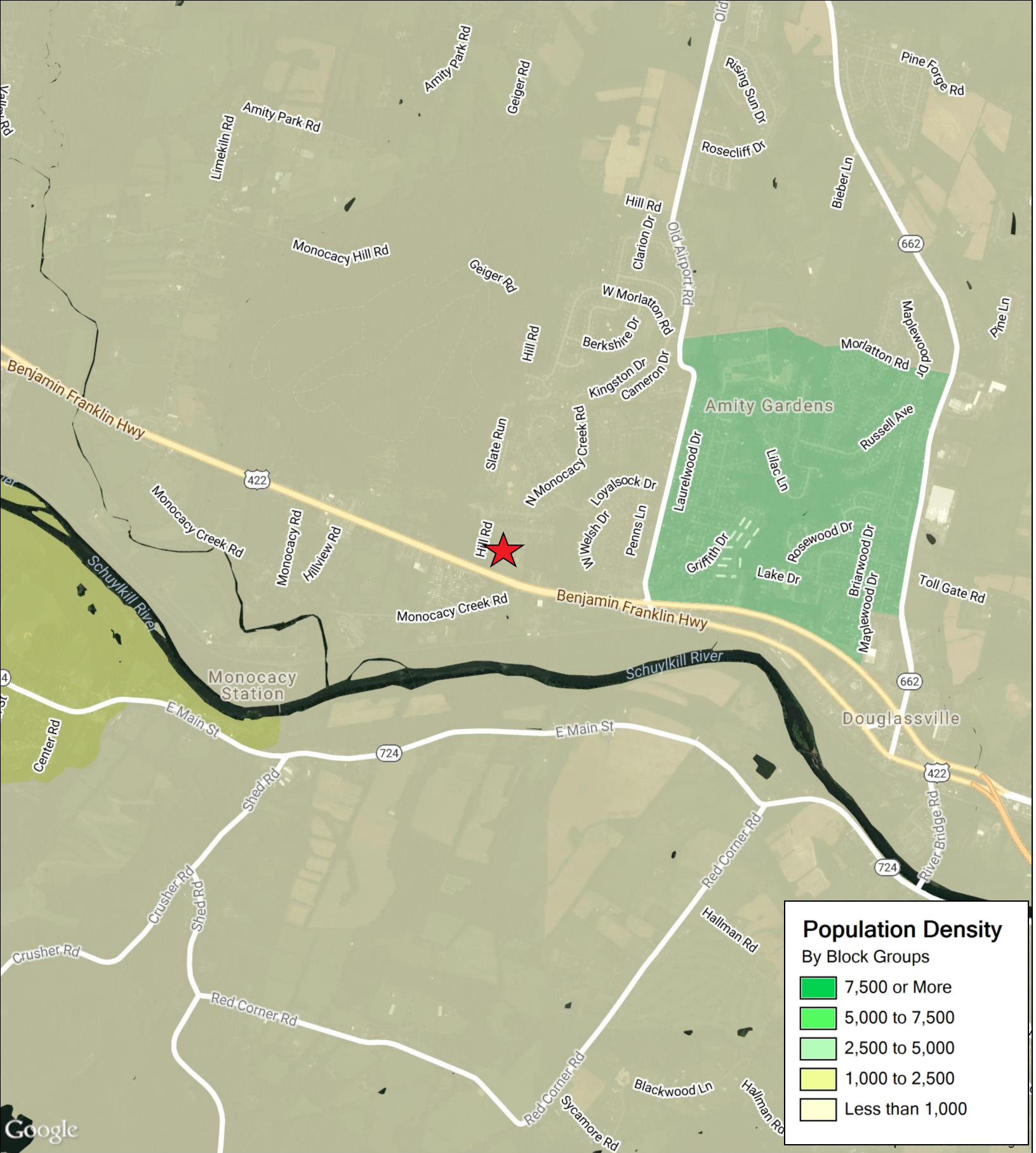


117 Monocacy Creek Rd, Douglassville PA





	1 mi radius	3 mi radius	5 mi radius
Population (2017)	3,408	17,138	36,619
Households (2017)	1,199	6,343	13,872



	1 mi radius	3 mi radius	5 mi radius
Total Employees	1,032	4,692	11,415
Population (2017)	3,408	17,138	36,619

SUMMARY PROFILE

2000-2010 Census, 2017 Estimates with 2022 Projections

Calculated using Weighted Block Centroid from Block Groups



Lat/Lon: 40.2655/-75.7523

RS1

117 Monocacy Creek Rd, Douglassville PA

1 mi radius 3 mi radius 5 mi radius

	1 mi radius	3 mi radius	5 mi radius	
POPULATION	2017 Estimated Population	3,408	17,138	36,619
	2022 Projected Population	3,412	17,173	36,840
	2010 Census Population	3,575	16,864	36,179
	2000 Census Population	2,817	13,866	32,068
	Projected Annual Growth 2017 to 2022	-	-	0.1%
	Historical Annual Growth 2000 to 2017	1.2%	1.4%	0.8%
	2017 Median Age	39.1	40.3	40.4
HOUSEHOLDS	2017 Estimated Households	1,199	6,343	13,872
	2022 Projected Households	1,221	6,457	14,160
	2010 Census Households	1,205	6,103	13,452
	2000 Census Households	1,037	5,148	12,024
	Projected Annual Growth 2017 to 2022	0.4%	0.4%	0.4%
	Historical Annual Growth 2000 to 2017	0.9%	1.4%	0.9%
RACE AND ETHNICITY	2017 Estimated White	89.7%	90.2%	88.8%
	2017 Estimated Black or African American	4.8%	4.6%	6.0%
	2017 Estimated Asian or Pacific Islander	1.9%	1.7%	1.6%
	2017 Estimated American Indian or Native Alaskan	0.2%	0.1%	0.2%
	2017 Estimated Other Races	3.5%	3.4%	3.5%
	2017 Estimated Hispanic	4.8%	4.9%	5.0%
INCOME	2017 Estimated Average Household Income	\$103,495	\$103,125	\$98,103
	2017 Estimated Median Household Income	\$96,156	\$82,480	\$77,276
	2017 Estimated Per Capita Income	\$36,407	\$38,172	\$37,181
EDUCATION (AGE 25+)	2017 Estimated Elementary (Grade Level 0 to 8)	0.8%	1.0%	1.9%
	2017 Estimated Some High School (Grade Level 9 to 11)	4.3%	6.6%	7.1%
	2017 Estimated High School Graduate	29.3%	34.5%	36.9%
	2017 Estimated Some College	15.1%	15.7%	16.6%
	2017 Estimated Associates Degree Only	9.8%	9.8%	9.0%
	2017 Estimated Bachelors Degree Only	24.1%	21.6%	18.5%
	2017 Estimated Graduate Degree	16.7%	10.8%	9.9%
BUSINESS	2017 Estimated Total Businesses	101	559	1,398
	2017 Estimated Total Employees	1,032	4,692	11,415
	2017 Estimated Employee Population per Business	10.2	8.4	8.2
	2017 Estimated Residential Population per Business	33.7	30.7	26.2

This report was produced using data from private and government sources deemed to be reliable. The information herein is provided without representation or warranty.