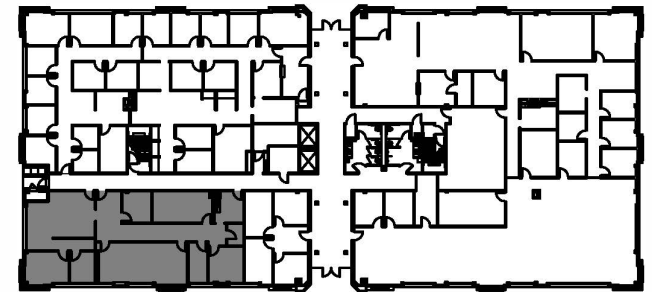


NORTH TRYON STREET



UNIVERSITY EXECUTIVE PARK DR.

REDLINE | DESIGN GROUP

ARCHITECTURE | INTERIORS | PLANNING

1023 w. morehead st., suite 220
 charlotte, nc 28208
 p. 704 . 377 . 2990
 f. 704 . 377 . 2909

CBRE

UNIVERSITY EXECUTIVE PARK

BLDG 8210 - 1ST FLOOR - SUITE 190

8210 UNIVERSITY EXECUTIVE PARK
 CHARLOTTE, NORTH CAROLINA

07.16.13

SCALE: 3/32"
 @ 8 1/2" X 11"

2,768 RSF