



High Image R&D Unit

**26439 RANCHO
PARKWAY, UNIT 110,
LAKE FOREST
CA 92630**

±3,164 SF
For Lease & Sale



PROPERTY OVERVIEW



±3,164 SF
unit available



±1,962 SF
two-story office



±1,202 SF
warehouse area



1 exterior
warehouse door



22'
clear height



100 AMP, 277/480v
electrical service



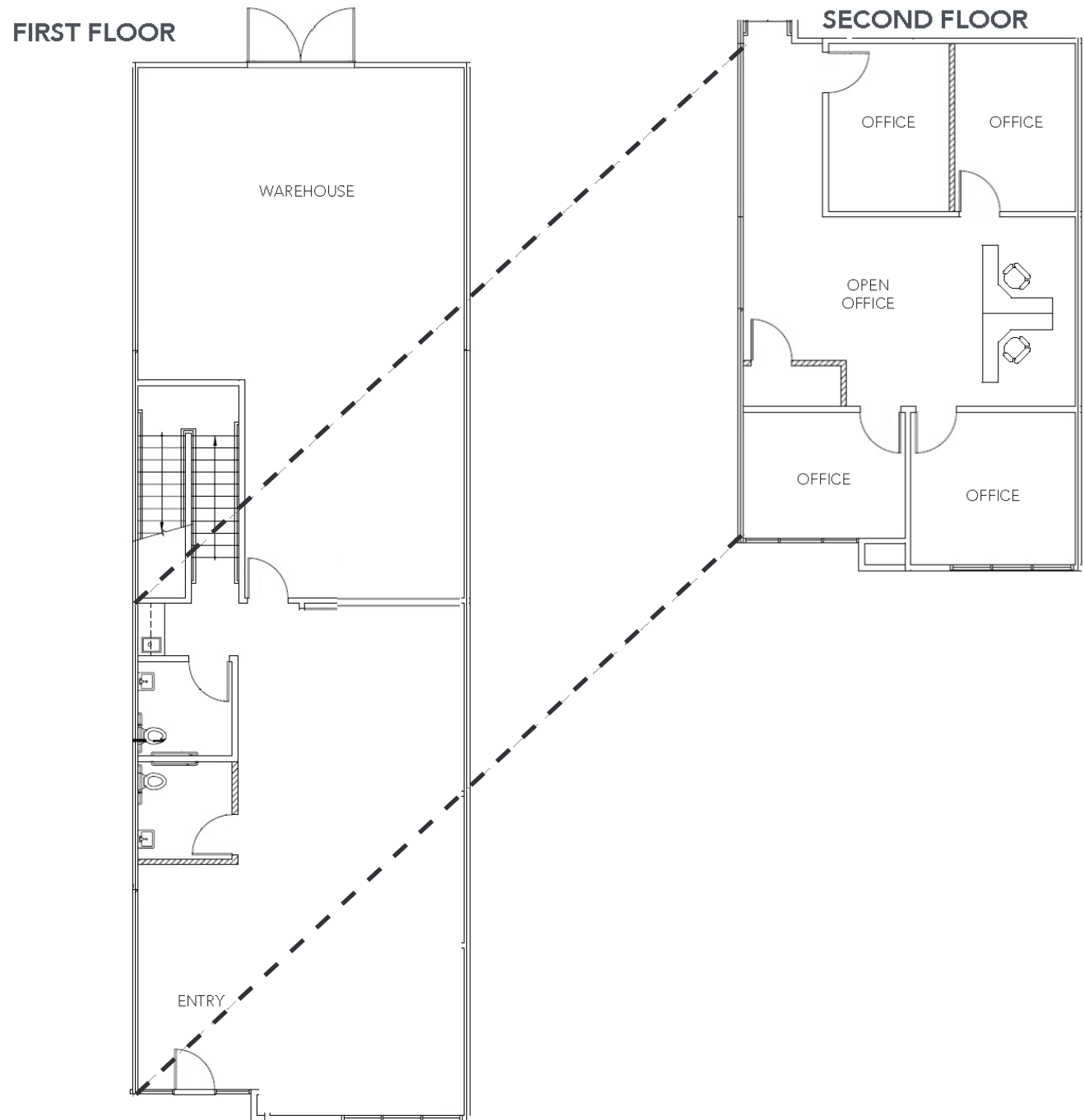
Fully
sprinklered
system



Close proximity
241 & I-5
freeways



FLOOR PLAN



LOCATION HIGHLIGHTS

Port of Los Angeles

Port of Long Beach

26439
RANCHO
PKWY

- 0.15 miles ▶ 241 Freeway
- 3.8 miles ▶ 133 Freeway
- 4.2 miles ▶ 5 Freeway
- 4.3 miles ▶ 405 Freeway
- 4.8 miles ▶ Irvine Spectrum Center
- 10.8 miles ▶ John Wayne Airport



Although information has been obtained from sources deemed reliable, neither Owner nor JLL makes any guarantees, warranties or representations, express or implied, as to the completeness or accuracy as to the information contained herein. Any projections, opinions, assumptions or estimates used are for example only. There may be differences between projected and actual results, and those differences may be material. The Property may be withdrawn without notice. Neither Owner nor JLL accepts any liability for any loss or damage suffered by any party resulting from reliance on this information. If the recipient of this information has signed a confidentiality agreement regarding this matter, this information is subject to the terms of that agreement. ©2025 Jones Lang LaSalle IP, Inc. All rights reserved.