

# ±110 ACRES FOR SALE OR BUILD TO SUIT

Located on Loop 9/SH-190 in Lancaster, Texas 75146

## LOCATION

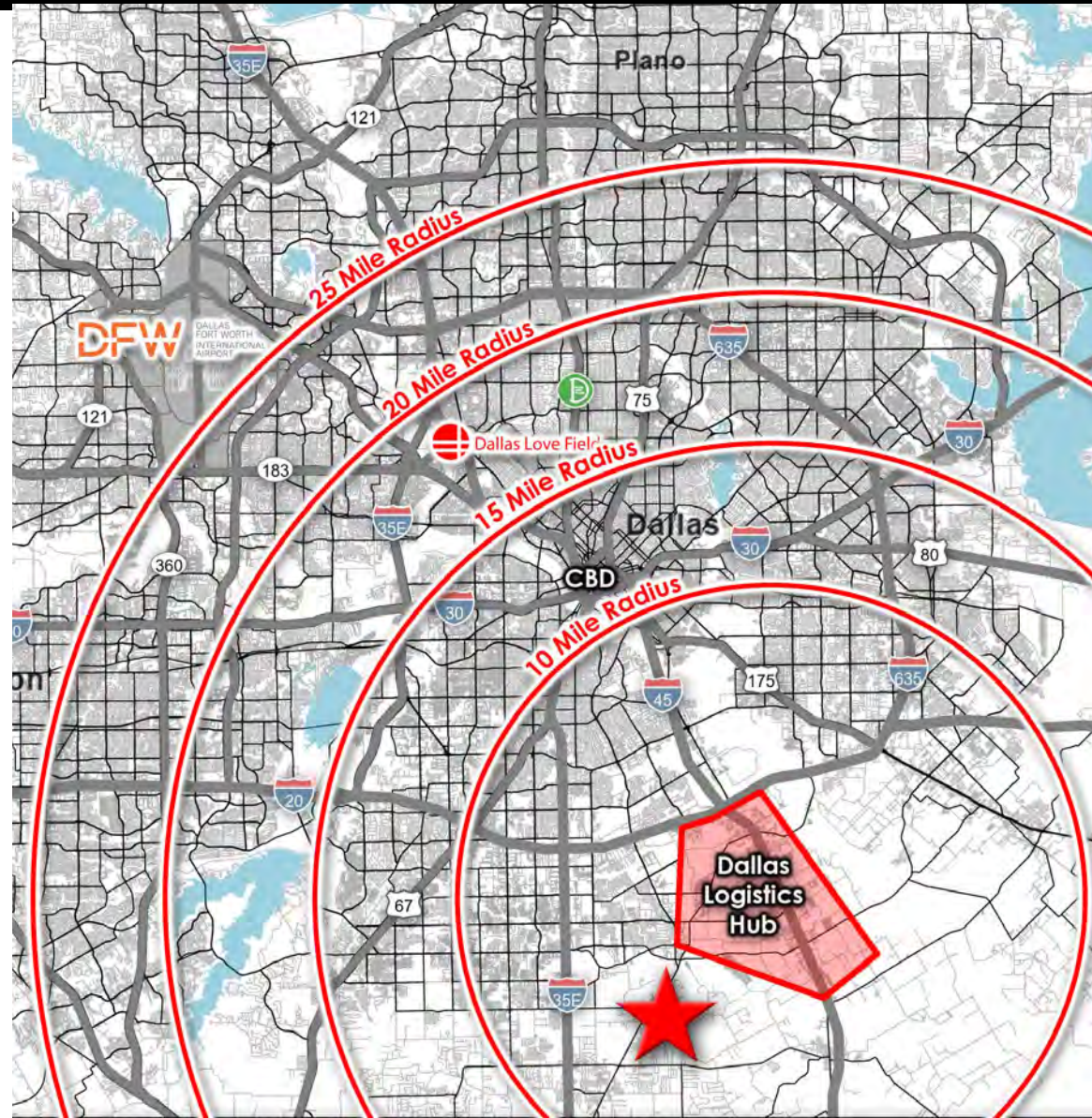
635 E Reindeer Rd  
Lancaster, Texas 75146

## SIZE

±110 Acres Total (may divide)

## PROPERTY OVERVIEW

- 110-acres of raw land in Lancaster, Texas available for Sale or Build to Suit
- Ideally located between IH-35 and IH-45, approximately 16 miles south of the Dallas Central Business District
- Minutes to the Dallas Logistics Hub, the largest logistics park in North America
- The influx of new developments to this area of South Dallas has prompted the development of the Union Pacific Railway intermodal facility and the BSNF Railway intermodal facility
- The future cargo airport for the Dallas Logistics Hub will be situated within the existing Lancaster Airport.
- Beneficial Loop 9 frontage - connector thoroughfare between Interstate 35 and Interstate 45
- Southeast Dallas is one of the fastest growing industrial markets in the United States with over 10 million SF of Industrial / Logistics / Fulfillment / Data Center uses in development.



Russ Webb, CCIM | C: 817.233.7100 | [rwebb@silveroakcre.com](mailto:rwebb@silveroakcre.com)  
LeAnn Brown | C: 817.313.3107 | [labrown@silveroakcre.com](mailto:labrown@silveroakcre.com)  
Silver Oak Commercial Realty | O: 817.849.8282 | [www.silveroakcre.com](http://www.silveroakcre.com)

# PROPERTY DETAILS

- Space: Turn-key Data Center site that can accommodate up to 1,500,000 SF of data center space in a campus setting
- Power: Site has over 3,500 feet on the south side of Oncor Overhead Power Line/300MW+ capable
- Water/Sewer: Rockett Water on-site. Sewer is available in close proximity from multiple sources (nearby developments)
- Fiber: Available from adjacent 100-acre GigabitFiber site & DataBank 292-acre campus that is under development just south of site.
- Zoning: Site Plan Approval for Data Center Development with other negotiable Lancaster incentives

## Data Center USA – Lancaster, Texas

Online services and e-commerce are exploding nationally. Covid-19 quickly changed consumer behavior, and it is possible that those changes are permanent due to the levels of convenience and choice offered by remote shopping.

As traditional retail struggles, champions of the e-commerce era are regrouping and developing strategies to best serve their consumers so they are not lost to more innovative competitors. This trend is evident in the Dallas area. Amazon's footprint is giant. Walmart recently announced a near \$1 billion investment in Lancaster with two facilities, including a mammoth fulfillment center. Wayfair continues to expand its business at its Lancaster fulfillment center. Kodiak Robotics is answering the call regarding the demand for truck drivers and lack of workforce supply by leading the movement toward autonomous semi-trucks. Kroger is building a 400,000-square-foot delivery hub in South Dallas. DSV Logistics is moving their regional headquarters to the center of all of this activity – Lancaster. More than 10 million square feet is in development within the Lanport (Lancaster, Hutchins, Wilmer, and Dallas).

A little less known than the retail movers and shakers, however, are the advantages of available data center infrastructure.

Data centers encompass the computers, machinery and technology that allow end users to connect with businesses. Every app downloaded, every order made online, every review, like and/or other interactive activity on the Internet takes machine power. As usage increases, the demand for data centers increases in order to handle the awesome flow of information that has become everyday life. This takes fiber and electricity – tons of electricity. Many data centers have capital expenditures of \$500 million to \$1 billion. They generally do not hire hundreds or thousands of employees; however, the ones they do hire tend to be paid top rates. The burden on city utilities is low compared to other kinds of uses.

Fiber lines, substations and high-voltage lines allowing for privately owned substations can be spotted in and around the Lanport cities. There are hundreds of acres safely away from rail that are ripe for data center site development. Metro networks and long-haul networks exist along Interstates 35E, 45, and State Highway 342. Others are quickly being planned and implemented.

Currently, Google, Compass & Bandera/Skybox have data centers under construction within the city limits of Lancaster. The infrastructure for data center development is in place, and the City of Lancaster is willing to provide incentives for companies willing to test the area as a new market.

Source: <https://partners.bizjournals.com/greater-dallas-fort-worth/lancaster/data-center-usa-lancaster-texas/>



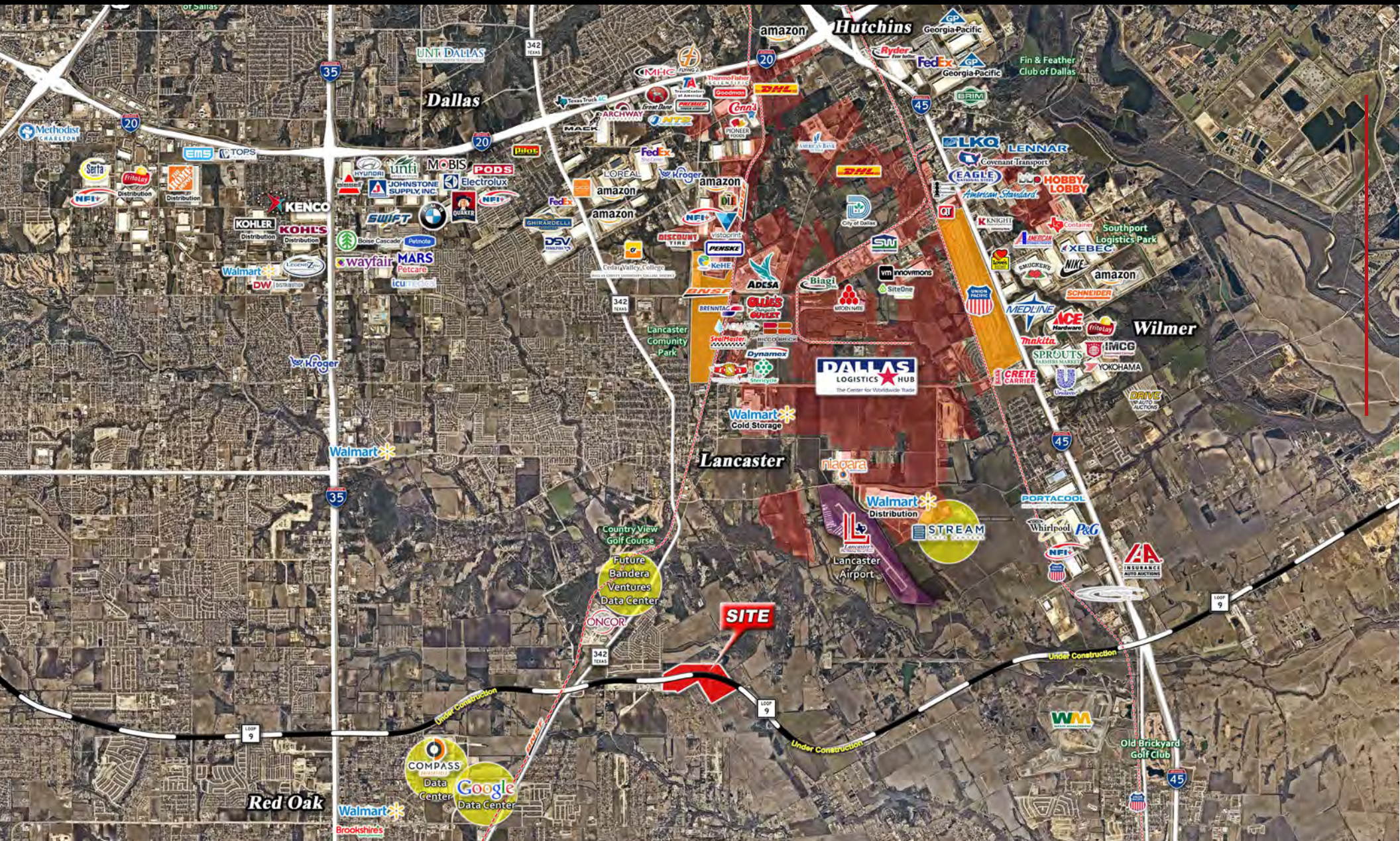
Russ Webb, CCIM | C: 817.233.7100 | [rwebb@silveroakcre.com](mailto:rwebb@silveroakcre.com)  
LeAnn Brown | C: 817.313.3107 | [labrown@silveroakcre.com](mailto:labrown@silveroakcre.com)  
Silver Oak Commercial Realty | O: 817.849.8282 | [www.silveroakcre.com](http://www.silveroakcre.com)



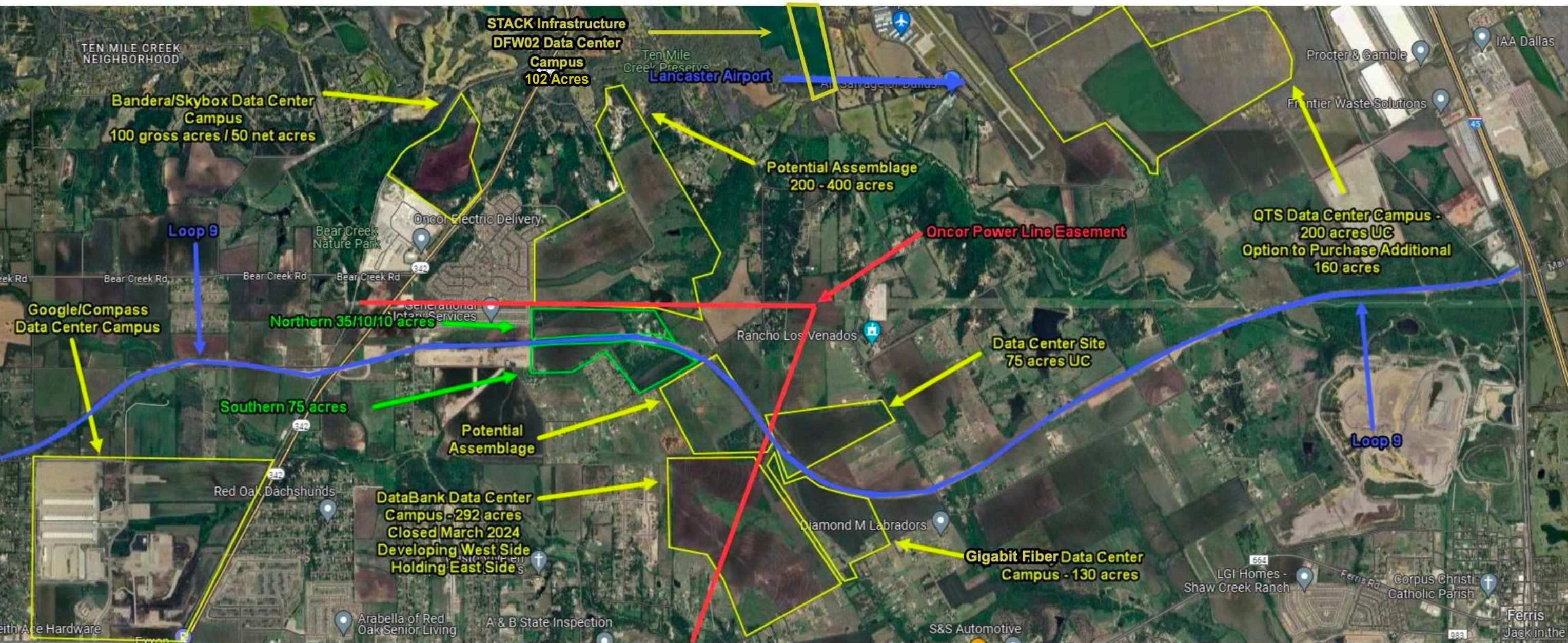
SITE LOCATION | HDP LANCASTER LOOP NINE DATA CENTER DEVELOPMENT

# ±110 ACRES FOR SALE OR BUILD TO SUIT

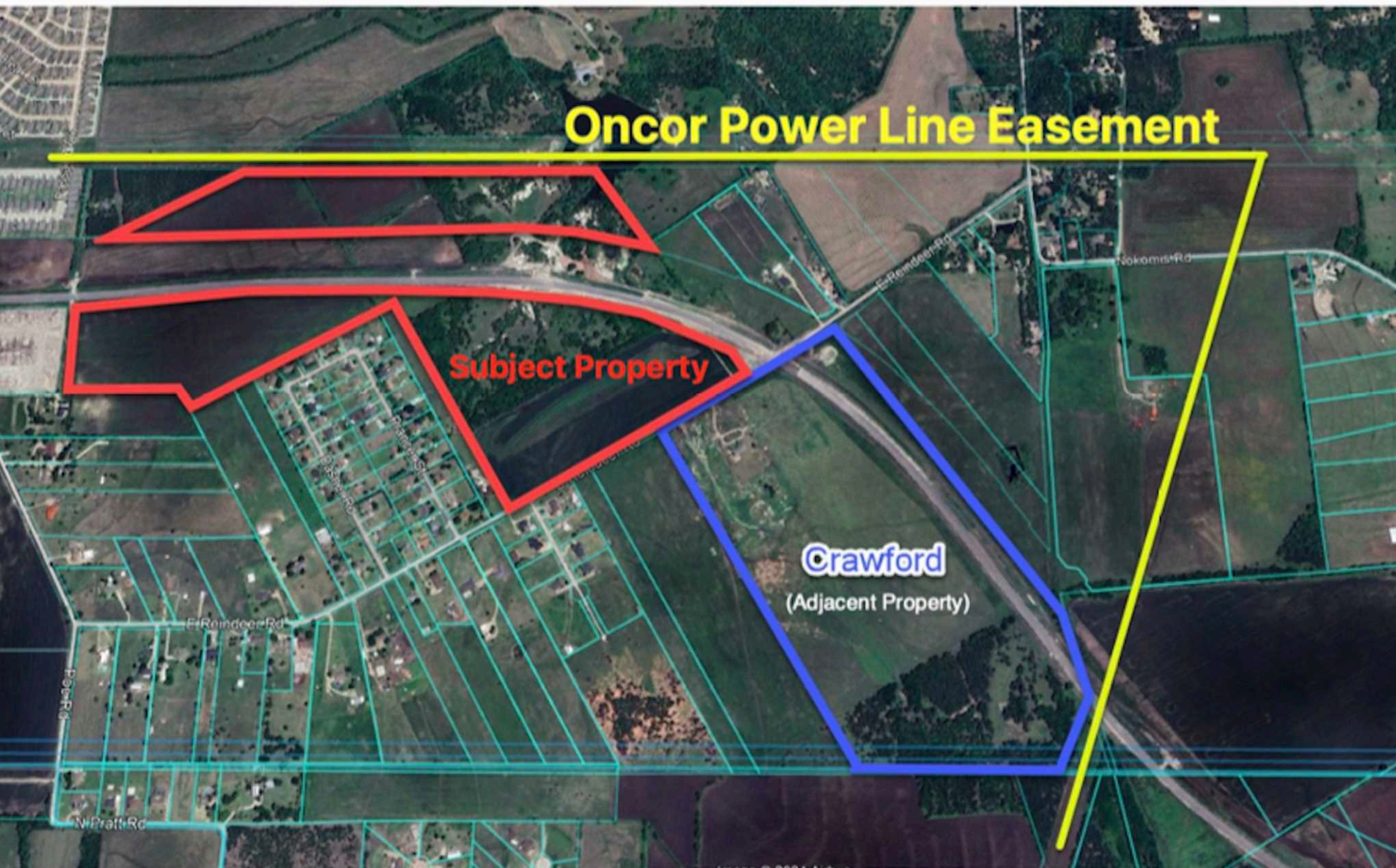
Located on Loop 9/SH-190 in Lancaster, Texas 75146



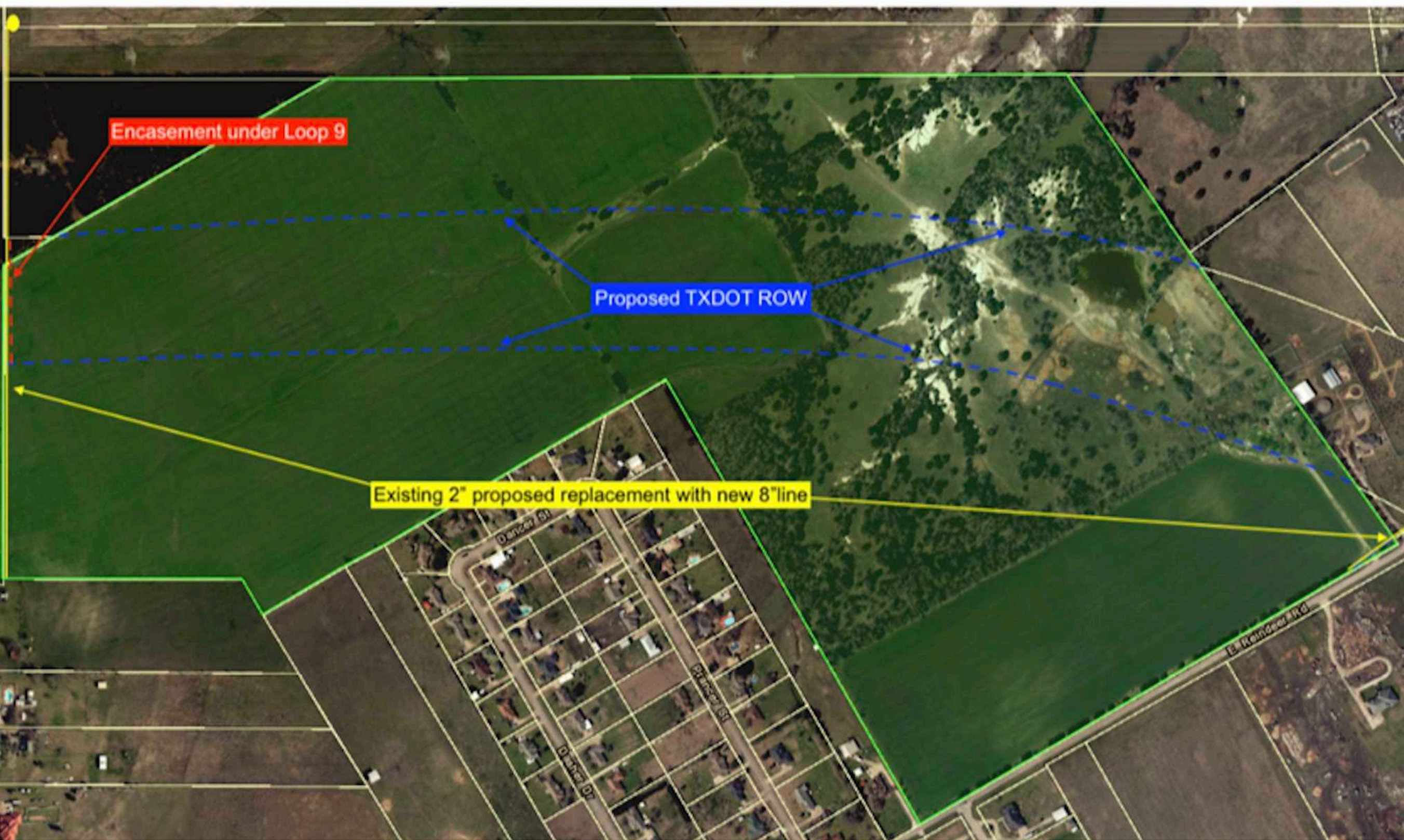




# Oncor Overhead Power Line Map



# Rockett Water Line Locations and Encasement Under Loop 9



# FIBER OPTIC LOCATIONS

Lancaster

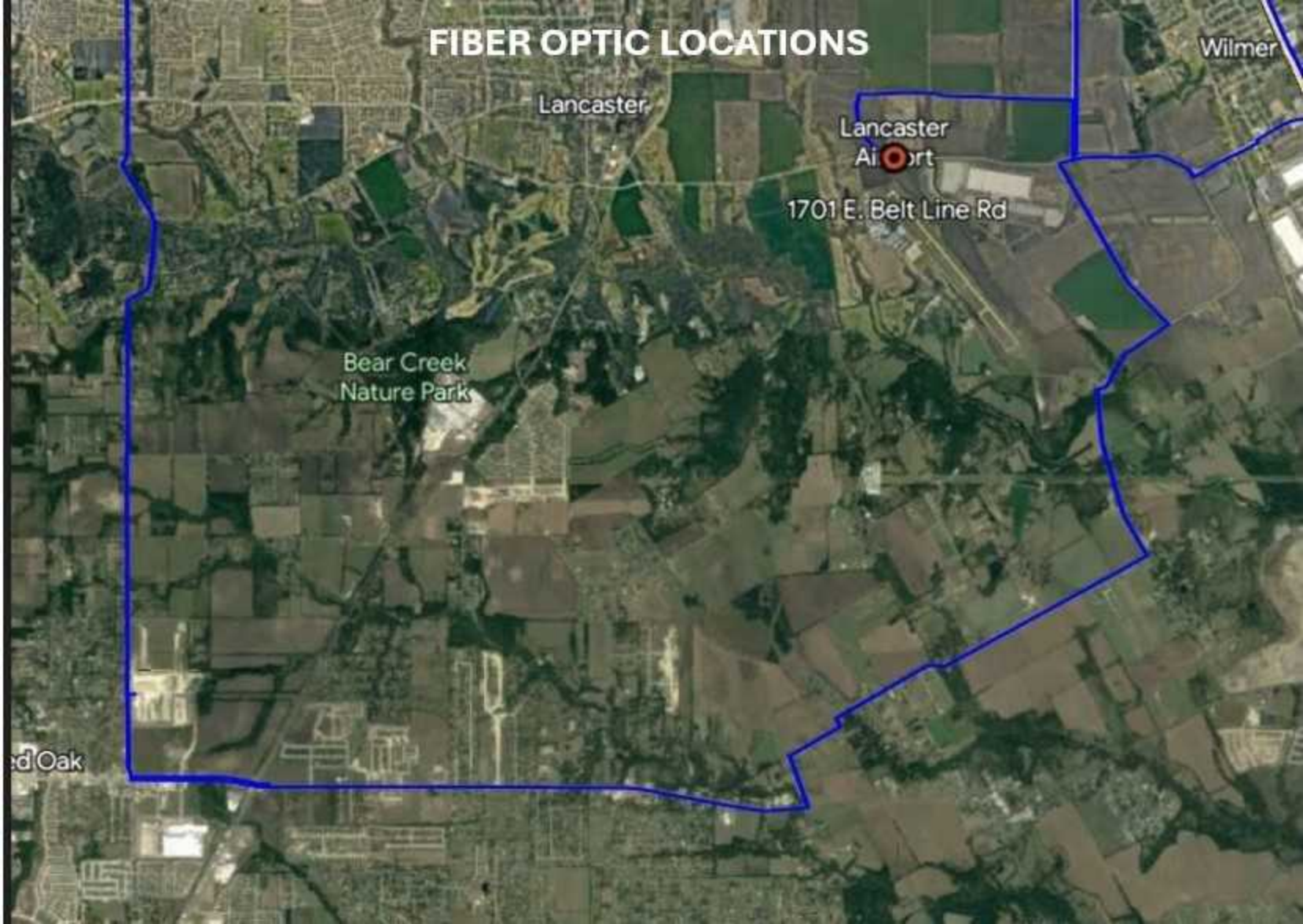
Lancaster  
Airport

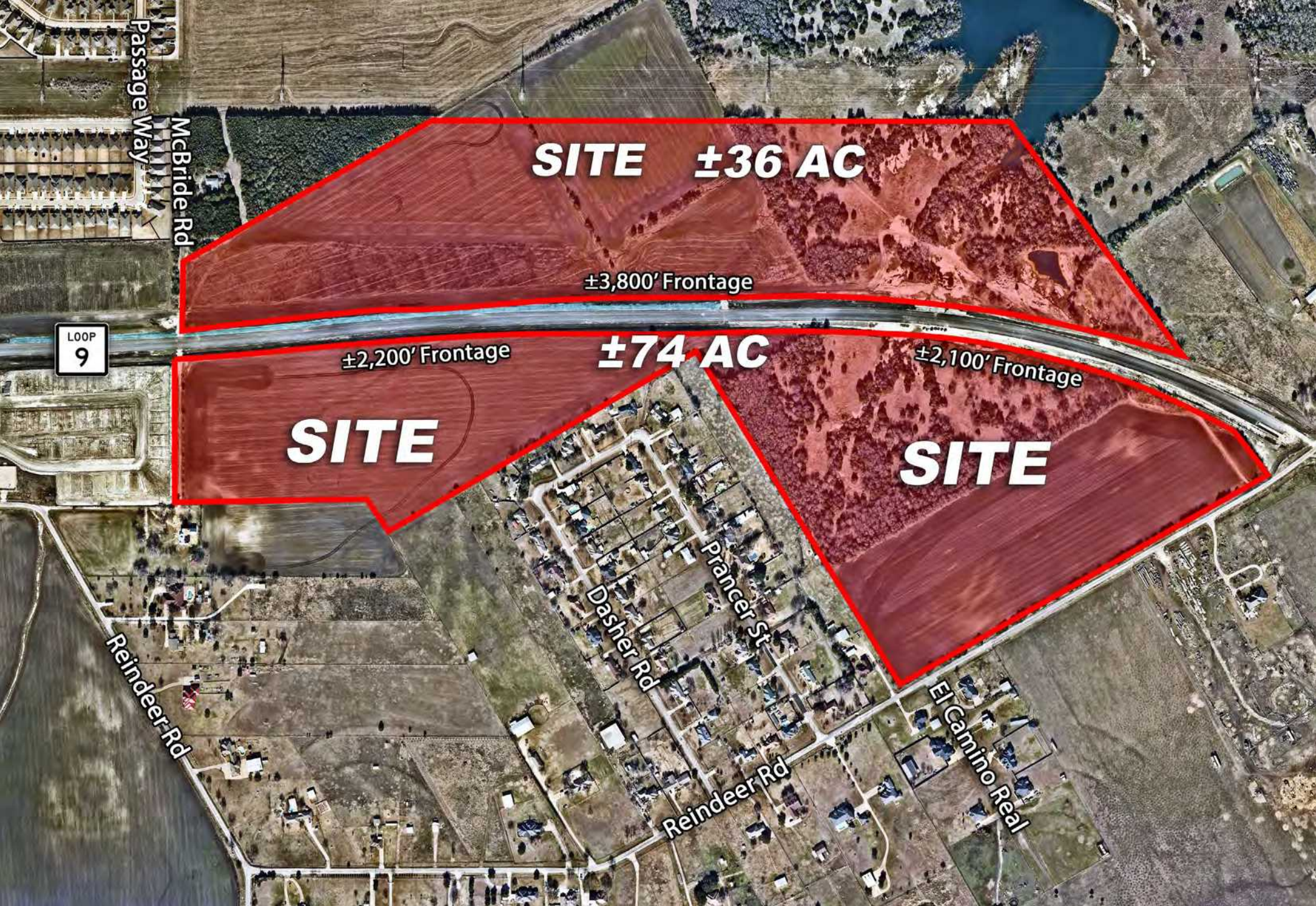
1701 E. Belt Line Rd

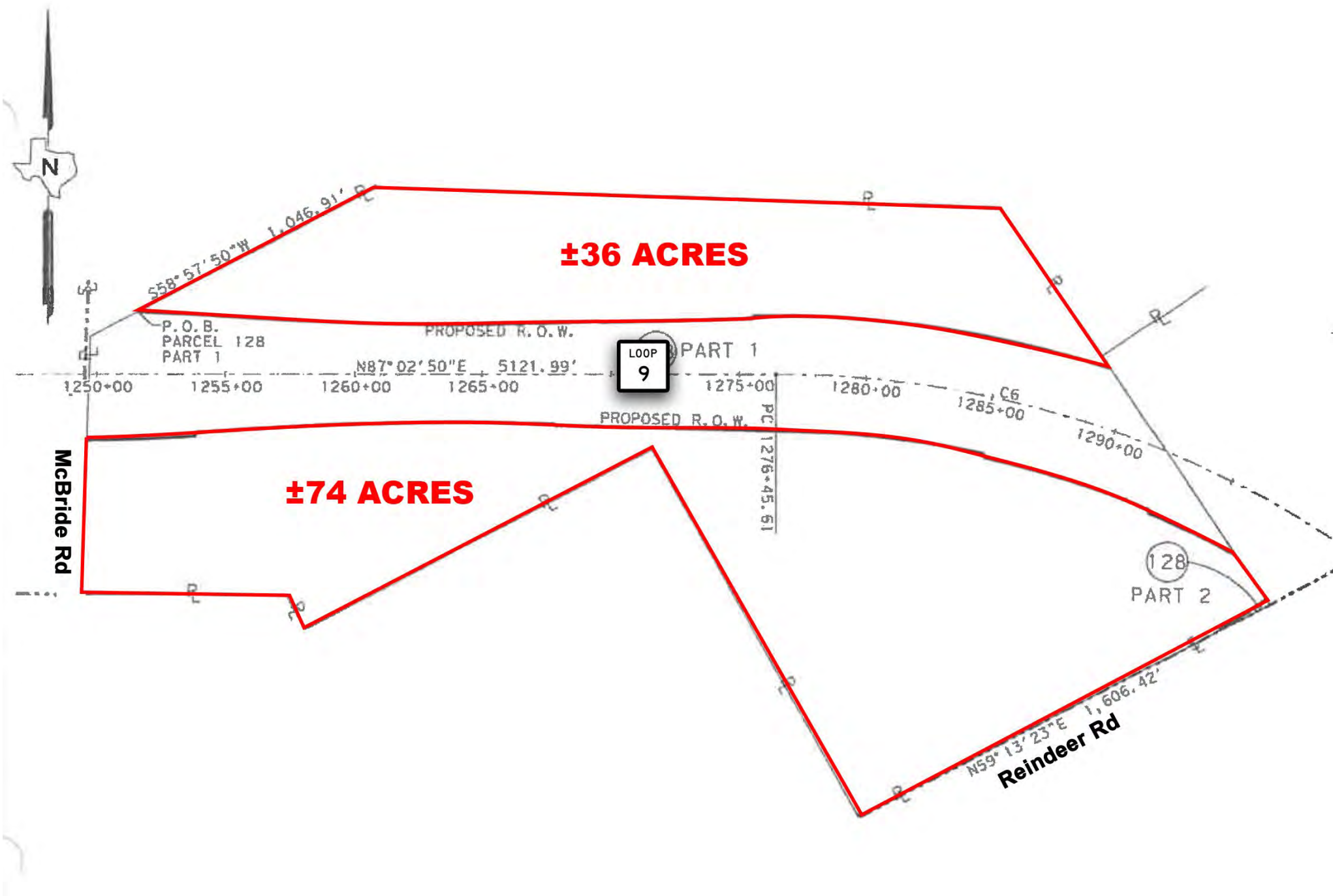
Bear Creek  
Nature Park

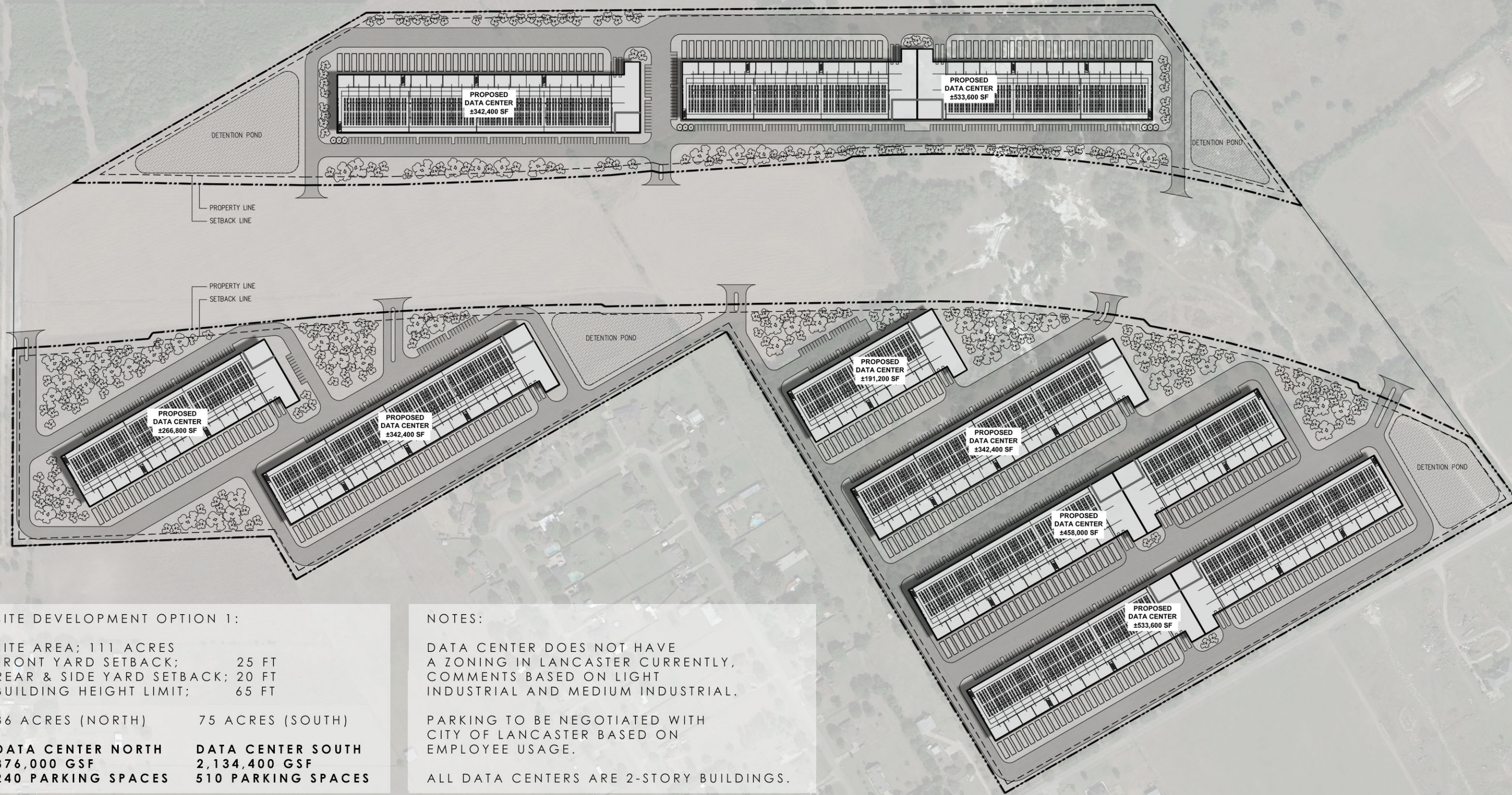
Wilmer

Oak









SITE DEVELOPMENT OPTION 1:

SITE AREA; 111 ACRES  
FRONT YARD SETBACK; 25 FT  
REAR & SIDE YARD SETBACK; 20 FT  
BUILDING HEIGHT LIMIT; 65 FT

36 ACRES (NORTH)      75 ACRES (SOUTH)

**DATA CENTER NORTH**      **DATA CENTER SOUTH**  
**876,000 GSF**                      **2,134,400 GSF**  
**240 PARKING SPACES**      **510 PARKING SPACES**

NOTES:

DATA CENTER DOES NOT HAVE  
A ZONING IN LANCASTER CURRENTLY,  
COMMENTS BASED ON LIGHT  
INDUSTRIAL AND MEDIUM INDUSTRIAL.

PARKING TO BE NEGOTIATED WITH  
CITY OF LANCASTER BASED ON  
EMPLOYEE USAGE.

ALL DATA CENTERS ARE 2-STORY BUILDINGS.



**SITE DEVELOPMENT OPTION 2:**

**SITE AREA; 111 ACRES**  
**FRONT YARD SETBACK; 25 FT**  
**REAR & SIDE YARD SETBACK; 20 FT**  
**BUILDING HEIGHT LIMIT; 65 FT**

**36 ACRES (NORTH)      75 ACRES (SOUTH)**

<b>DATA CENTER NORTH</b>	<b>DATA CENTER SOUTH</b>
<b>876,000 GSF</b>	<b>2,290,000 GSF</b>
<b>240 PARKING SPACES</b>	<b>510 PARKING SPACES</b>

**NOTES:**

DATA CENTER DOES NOT HAVE A ZONING IN LANCASTER CURRENTLY, COMMENTS BASED ON LIGHT INDUSTRIAL AND MEDIUM INDUSTRIAL.

PARKING TO BE NEGOTIATED WITH CITY OF LANCASTER BASED ON EMPLOYEE USAGE.

ALL DATA CENTERS ARE 2-STORY BUILDINGS.



## Lancaster: A Proud Past & A Bright Future

Founded in 1852 as a frontier post, Lancaster is one of the oldest communities in the Dallas, Texas, area. And its future has never looked brighter.

The city's pro sustainable-growth stance has helped usher in a new era of prosperity. In recent years Lancaster has enjoyed:

- Record residential growth
- Record industrial expansion (Brenntag Southwest, Swift, Argent/ProLogis)
- Upgraded municipal bond rating (S&P "A")
- \$110 million LISD bond package passed by 3:1 margin
- City-wide "Triple Freeport"
- Over \$3 million expansion of Lancaster Airport
- \$16.8 million bond package also passed by 3:1 margin

Lancaster's pro quality-growth Mayor, Council and city staff are securing a brighter future by saying "yes" to new growth initiatives including:

- Yes to a preferred alignment of Loop 9
- Yes to a comprehensive land use plan
- Yes to an updated and ambitious thoroughfare plan
- Yes to an I-20 traffic access plan developed by property owner input and extensive Texas Department Of Transportation (TxDOT) coordination
- Yes to a series of special overlay districts to further promote unique development opportunities
- Yes to an ambitious "LNC" Airport Master Plan

Lancaster's position within the Dallas/Fort Worth Metroplex ensures access to a large, high quality workforce. Lancaster also enjoys proximity to the University of North Texas, Dallas, the only accredited four-year public university in Dallas County.



Russ Webb, CCIM | C: 817.233.7100 | [rwebb@silveroakcre.com](mailto:rwebb@silveroakcre.com)  
 LeAnn Brown | C: 817.313.3107 | [labrown@silveroakcre.com](mailto:labrown@silveroakcre.com)  
 Silver Oak Commercial Realty | O: 817.849.8282 | [www.silveroakcre.com](http://www.silveroakcre.com)

## The Center For Worldwide Trade

The Dallas Logistics Hub is the ideal for businesses looking for a strategically located manufacturing or distribution center. Here is an overview of the Dallas Hub's features and advantages:

- Located in the 4th Largest Industrial Market in the United States.
- 2,000 Master-Planned Acres
- 20 Million SF of Development Potential
- Build-Ready Sites for Distribution, Manufacturing, Office and Retail Developments
- Adjacent to:
  - Union Pacific Southern Dallas Intermodal Facility
  - Four Major Highway Connectors (I20, I45, I35, Loop 9)
  - Lancaster Airport
- Creation of 20,000 direct jobs and 20,000 indirect jobs in South Dallas County
- Foreign Trade Zone
- EB-5 Qualified
- Triple Freeport

## “America’s Inland Port”

The Dallas Logistics Hub is the largest new logistics park in North America, with 6,000 acres master-planned for 60 million square feet of distribution, manufacturing, office and retail developments. The Hub will position Dallas as the number one trade hub in the Southwest region and serve as the primary gateway for the distribution of goods to the major population centers in the Central and Eastern United States.

This premiere logistics park is adjacent to Union Pacific’s Southern Dallas Intermodal Terminal, a potential BNSF intermodal facility, four major highway connectors (I-20, I-45, I-35 and Loop 9/Trans-Texas Corridor) and a future air cargo facility at Lancaster Airport.

The Dallas Logistics Hub, which spans across the communities of Dallas, Lancaster, Wilmer and Hutchins, will serve as a major Inland Port for regional and national distribution.



## Lancaster - the dynamic city with an airport to match!

Located just 15 minutes from Downtown Dallas and nestled in the convergence of three interstate highways, I-20, I-35E and I-45, Lancaster offers the amenities of big city life while maintaining a small town rural environment. Lancaster is surrounded with picturesque farmland, abundant creeks and woods, and retains a rich, historical heritage that points to a proud past.

### In recent years Lancaster successes include:

- Record yearly residential growth averaging 500+ single-family housing starts in '02-'05
- Record \$132 million industrial expansion
- An upgraded municipal bond rating (S&P "A")
- \$110 million LISD bond package
- \$16.8 million City bond package
- City-wide "Triple Freeport"
- Over \$3 million of airport infrastructure improvements
- \$1.3 million of new airport hangar construction

Lancaster has a pro quality-growth Mayor, Council and City Staff who are finding ways to say "Yes".

- Yes to a comprehensive land use plan
- Yes to an updated and ambitious thoroughfare plan
- Yes to an I-20 traffic access plan developed with property owner input and extensive Texas Department of Transportation coordination
- Yes to a series of special overlay districts to further promote unique development opportunities
- Yes to the "LanPort District" which protects the airport from encroachment by non-compatible uses
- Yes to an ambitious and far-reaching Airport Master Plan - completed and adopted January 2006

Lancaster continues to receive national attention for saying "Yes" to building sustainable communities with the adoption of the Mills Branch Overlay District and the opening of The Tribute, the first of three traditional neighborhood designed sub-divisions.

Service road construction on I-20 commenced in late 2005 and the lane reconstruction along an approximately

five-mile stretch of I-35E was completed. Complementing these elements of an efficient transportation network are the freight-rail line operated by Union Pacific Railroad as well as the new 360-acre Dallas Intermodal Terminal just east of Lancaster along I-45, and our ever-expanding Lancaster Airport (LNC).

In addition to the airport, another feature unique to Lancaster is our hospital. Medical Center at Lancaster is a 90-bed acute care facility offering an array of healthcare services. This community resource works closely with local and area employers to help them get the most for their healthcare dollars. A major expansion for 2006 consisting of another medical office building and a specialty hospital has recently been announced.



Lancaster's strategic location within the D/FW Metroplex ensures ready access to a large high-quality workforce. An additional training resource in Lancaster is Cedar Valley College that has a customized workforce training assistance program.

Complementing this educational resource is UNT-Dallas as the only accredited four year public university in Dallas County. The new campus abutting Lancaster's northern city-limits started construction and plans for classes to be held there in 2007.

In May 2005, Lancaster residents celebrated the centennial of the public school system and the opening of several facilities as part of a \$110 million bond package that included a \$65 million new High School and athletic/sports facilities for joint use by LISD, City, and Cedar Valley College.

Lancaster is committed to quality growth and further diversification of its economic base. The community is actively seeking additional economic development in the following sectors:

- Light manufacturing
- Healthcare-related industries and services
- Expanded retail shopping and restaurant opportunities
- Business service operations
- Logistics and distribution facilities

Take a closer look and discover dynamic Lancaster.



Strategic location within six miles of Interstates 20, 35E, 45 and the future Loop 9

# CORPORATE AVIATION HAS DISCOVERED LANCASTER AIRPORT.

## ISN'T IT ABOUT TIME THAT YOU DID?



Russ Webb, CCIM | C: 817.233.7100 | [rwebb@silveroakcre.com](mailto:rwebb@silveroakcre.com)  
 LeAnn Brown | C: 817.313.3107 | [labrown@silveroakcre.com](mailto:labrown@silveroakcre.com)  
 Silver Oak Commercial Realty | O: 817.849.8282 | [www.silveroakcre.com](http://www.silveroakcre.com)

## With all of the exciting growth taking place in southern Dallas County, Lancaster Airport is ready for takeoff.

Located on 306 acres next to the newest epicenter of logistics activity in Dallas/Ft. Worth – the \$100 million 360-acre Union Pacific Dallas Intermodal Terminal and The Allen Group's planned 5,000+-acre Dallas Logistics Hub, this airport owned by the City of Lancaster is positioned to be the new premier aviation facility for the Metroplex.



Classified by the FAA as a reliever airport, the current 5,000' asphalt runway is capable of accommodating corporate as well as single engine aircraft. Immediate plans are underway for a runway expansion from 5,000' to 6,500' and eventually 8,000' to support larger corporate jets as well as freight capacity. To accommodate the requirements of corporate aviation and future expansion, pro-active infrastructure improvements to the runway, taxiways, lighting, hangars, utilities and Automated Weather Observation System have recently been made to Lancaster Airport.

### COMMERCIAL DEVELOPMENT POTENTIAL

Lancaster Airport is surrounded by thousands of acres of developable farmland within the Lancaster city limits and in unincorporated areas of Dallas County. City leaders are working to design a future cargo-compatible runway as well as working to protect land surrounding the airport from residential encroachment with a "LanPort District." This district prevents non-compatible uses in both the immediate and long-term future of the area. Being located adjacent to the Dallas Logistics Hub, a major

"inland port" that will facilitate the distribution of products from Mexico, the Gulf, and the Pacific to the rest of the country, makes private investment of new multi-use opportunities in the area have a bright future. It's easy to see that with an ambitious airport master plan and major developers in place, Lancaster Airport has nowhere else to go except up.



### INFRASTRUCTURE IMPROVEMENTS:

- Over 134,640 s.f. of new private hangars
- Renovation/restripe of all asphalt surfaces
- Construction of new hangar access taxiways
- Installation of new runway lighting
- Installation of medium intensity taxiway lighting
- Installation of PAPI visual landing aids
- Installation of a new rotation beacon and electronic vault
- Installation of Automated Weather Observation System (AWOS) offering 24 hour weather conditions
- New water and sewer line to serve the southern portion of the Airport

### LANCASTER AIRPORT (LNC) FEATURES

- Easy 15 minute commute from downtown Dallas
- Strategic location within six miles of Interstates 20, 35E, 45 and the future Loop 9 position Lancaster as the Metroplex's southern transportation entrance
- It is an integral part of the Dallas NAFTA Trade Corridor Components
- Highly competitive AV Fuel Jet-A and 100LL pricing
- 5,000' x 100' asphalt runway
- 23,000 square yard ramp design minimizes the need for towing
- NDB and GPS certified approaches

- Pilot planning room with automated weather, complimentary high-speed internet and WIFI access, conference room and lounge
- Ground Communications Outlet (GCO)
- 220 based aircraft with 200 hangars
- Full-service restaurant with catering capabilities
- Auto rental and crew cars available with reservations
- Discounted local hotel rates
- Home to the Dallas/Ft. Worth Wing of the Commemorative Air Force aviation museum
- Supportive City Council, Airport Advisory Board and City staff



## LOOP 9, SOUTHEAST PROJECT (CORRIDOR B: I-35 E TO I-45)

The proposed Loop 9, Segment C project begins at I-45 and ends at I-20. The need for the Loop 9 project is to address population growth, regional transportation demand, system linkages, and intermodal connections in the study area and Dallas – Fort Worth (DFW) Region.

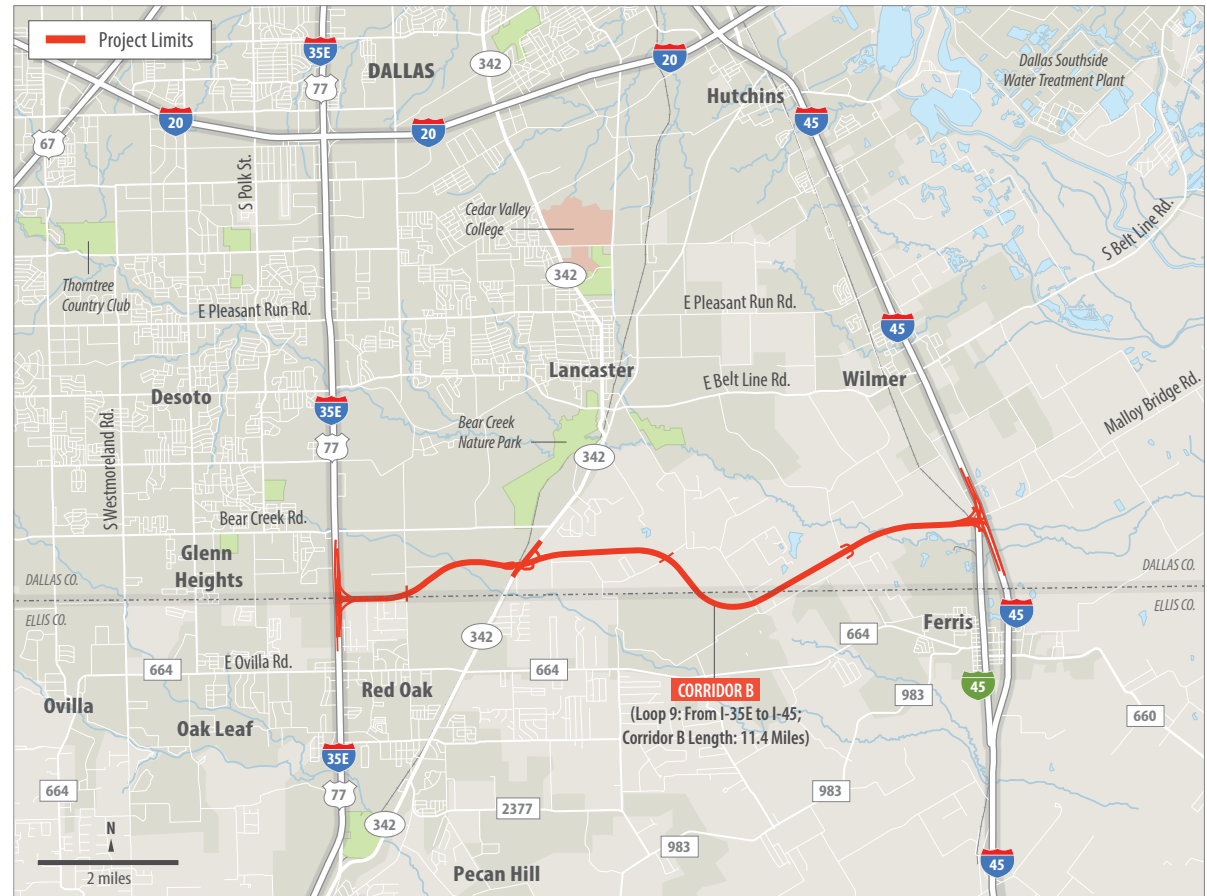
The proposed Loop9 Segment B project would likely be constructed in four phases based on traffic needs and project funding.

Phase 1 - Construct a single two-lane, two-way frontage road, and acquire the proposed ROW to accommodate the frontage roads and the future ultimate access-controlled mainlane facility.

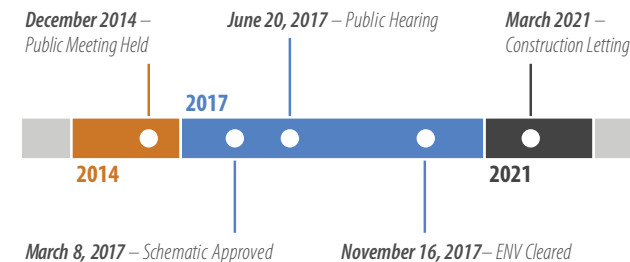
Phase 2 - Construction of the second two-lane frontage road and the conversion of the two-way frontage road built in Phase 1 to a one-way operation.

Phase 3 - Construction of a third frontage road lane in each direction and include the construction of grade separations at specific high-volume intersections.

Phase 4 - Construction of the ultimate access-controlled mainlane facility in both directions.

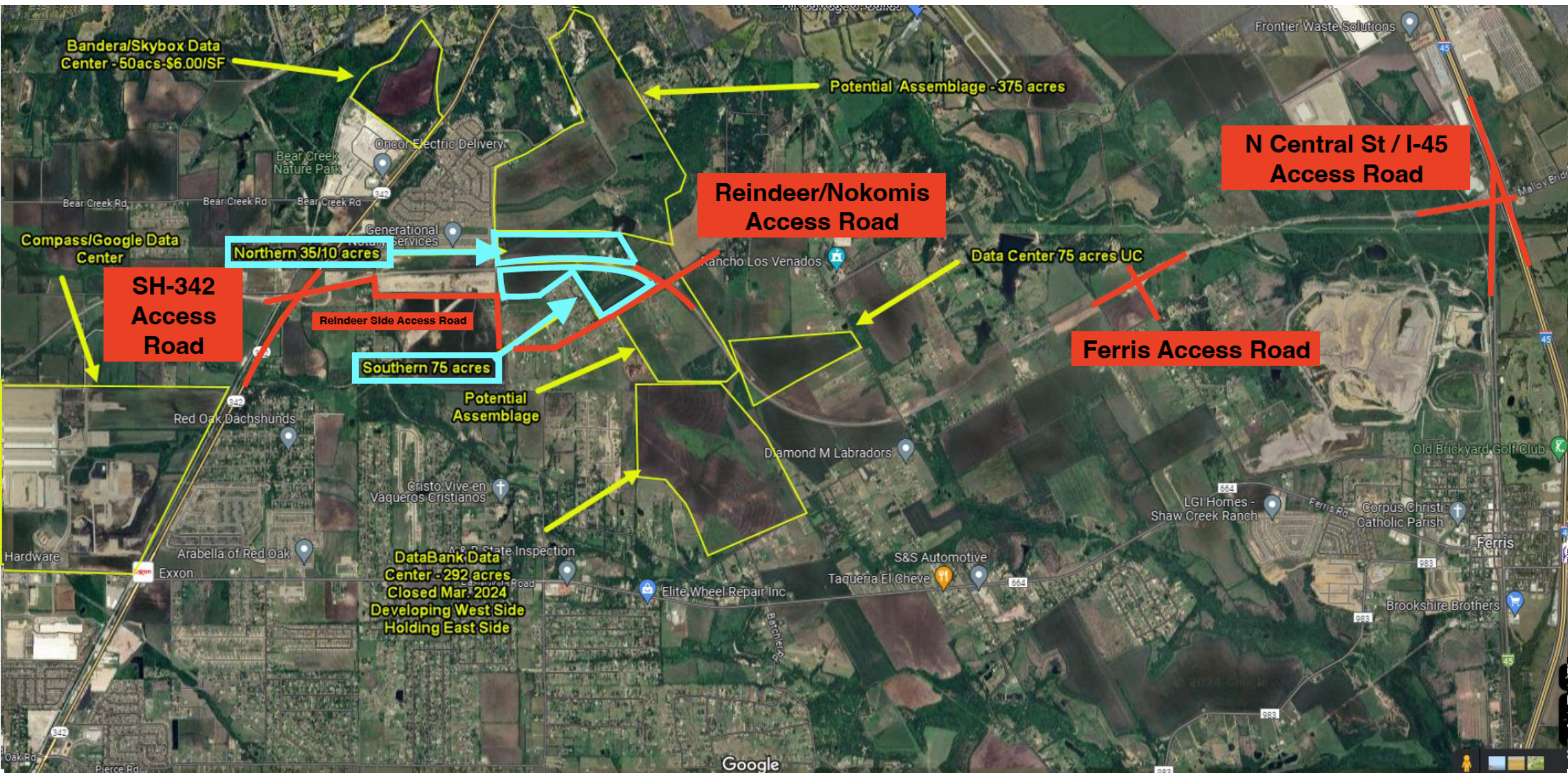


### PROJECT TIMELINE



SOURCE: TxDOT

TxDOT graphic



Bandera/Skybox Data Center - 50acs-\$6.00/SF

Potential Assemblage - 375 acres

N Central St / I-45 Access Road

Reindeer/Nokomis Access Road

Compass/Google Data Center

Northern 35/10 acres

SH-342 Access Road

Reindeer Side Access Road

Data Center 75 acres UC

Ferris Access Road

Southern 75 acres

Potential Assemblage

DataBank Data Center - 292 acres Closed Mar. 2024 Developing West Side Holding East Side

Google

LOOP 9, SOUTHEAST PROJECT  
(CORRIDOR B: I-35 E TO I-45)



## LOOP 9 SEGMENT B



## LOOP 9 SEGMENT B

### Potential Phased Construction Option: One-Way Access Roads

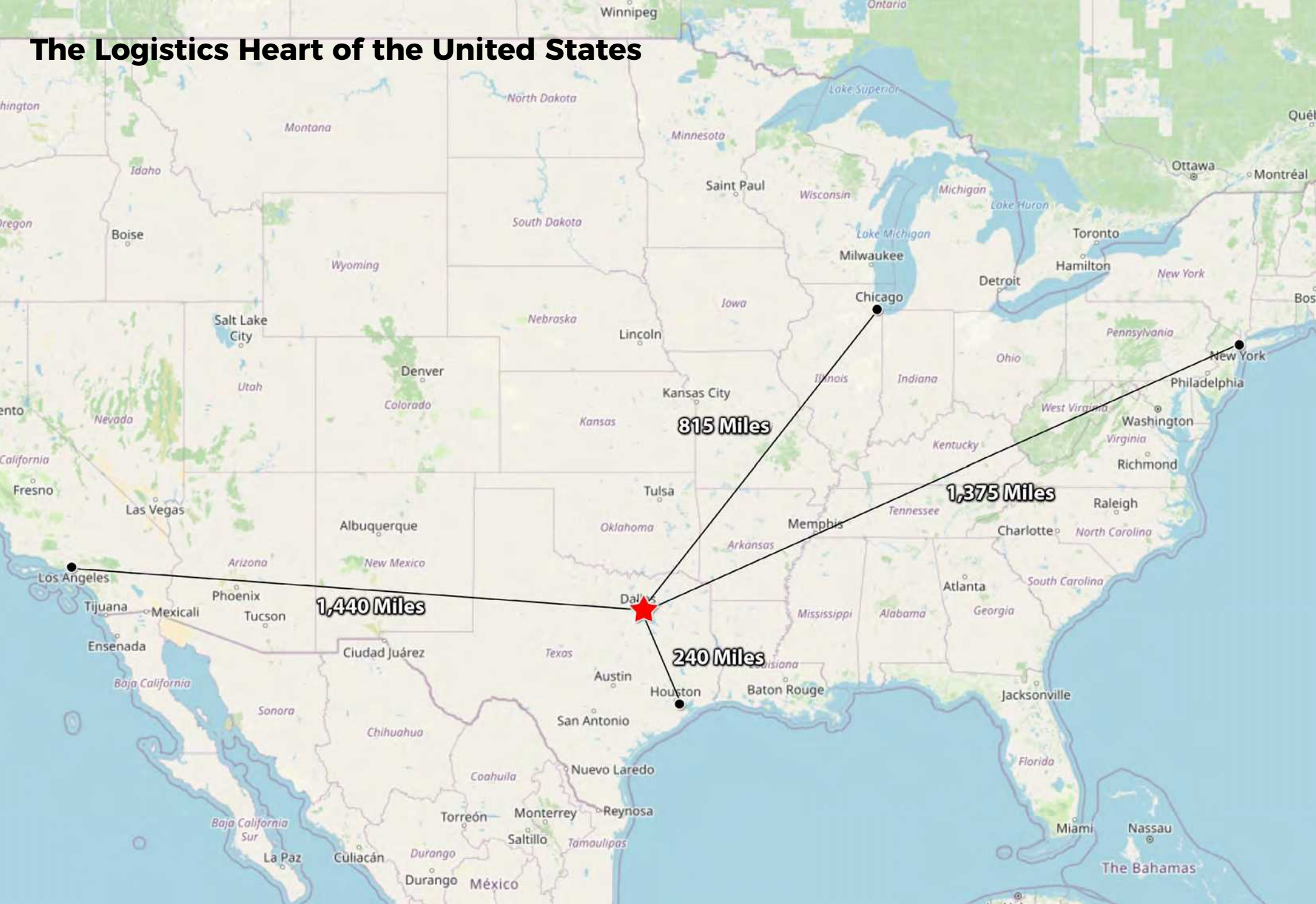


## LOOP 9 SEGMENT B

### Potential Phased Construction Option: Mainlanes (FUTURE LANES – IF WARRANTED - full, controlled access facility)



# The Logistics Heart of the United States





# Information About Brokerage Services

*Texas law requires all real estate license holders to give the following information about brokerage services to prospective buyers, tenants, sellers and landlords.*

11-03-2025



## TYPES OF REAL ESTATE LICENSE HOLDERS:

- **A BROKER** is responsible for all brokerage activities, including acts performed by sales agents sponsored by the broker.
- **A SALES AGENT** must be sponsored by a broker and works with clients on behalf of the broker.

## A BROKER'S MINIMUM DUTIES REQUIRED BY LAW (A client is the person or party that the broker represents):

- Put the interests of the client above all others, including the broker's own interests;
- Inform the client of any material information about the property or transaction received by the broker;
- Answer the client's questions and present any offer to or counter-offer from the client; and
- Treat all parties to a real estate transaction honestly and fairly.

**WRITTEN AGREEMENTS ARE REQUIRED IN CERTAIN SITUATIONS:** A license holder who performs brokerage activity for a prospective buyer of residential property must enter into a written agreement with the buyer before showing any residential property to the buyer or if no residential property will be shown, before presenting an offer on behalf of the buyer. This written agreement must contain specific information required by Texas law. For more information on these requirements, see section 1101.563 of the Texas Occupations Code. **Even if a written agreement is not required, to avoid disputes, all agreements between you and a broker should be in writing and clearly establish: (i) the broker's duties and responsibilities to you and your obligations under the agreement; and (ii) the amount or rate of compensation the broker will receive and how this amount is determined.**

## A LICENSE HOLDER CAN REPRESENT A PARTY IN A REAL ESTATE TRANSACTION:

**AS AGENT FOR OWNER (SELLER/LANDLORD):** The broker becomes the property owner's agent through an agreement with the owner, usually in a written listing to sell or property management agreement. An owner's agent must perform the broker's minimum duties above and must inform the owner of any material information about the property or transaction known by the agent, including information disclosed to the agent by the buyer or buyer's agent. **An owner's agent fees are not set by law and are fully negotiable.**

**AS AGENT FOR BUYER/TENANT:** The broker becomes the buyer/tenant's agent by agreeing to represent the buyer, usually through a written representation agreement. A buyer's agent must perform the broker's minimum duties above and must inform the buyer of any material information about the property or transaction known by the agent, including information disclosed to the agent by the seller or seller's agent. **A buyer/tenant's agent fees are not set by law and are fully negotiable.**

**AS AGENT FOR BOTH - INTERMEDIARY:** To act as an intermediary between the parties the broker must first obtain the written agreement of *each party* to the transaction. The written agreement must state who will pay the broker and, in conspicuous bold or underlined print, set forth the broker's obligations as an intermediary. A broker who acts as an intermediary:

- Must treat all parties to the transaction impartially and fairly;
- May, with the parties' written consent, appoint a different license holder associated with the broker to each party (owner and buyer) to communicate with, provide opinions and advice to, and carry out the instructions of each party to the transaction.
- Must not, unless specifically authorized in writing to do so by the party, disclose:
  - that the owner will accept a price less than the written asking price;
  - that the buyer/tenant will pay a price greater than the price submitted in a written offer; and
  - any confidential information or any other information that a party specifically instructs the broker in writing not to disclose, unless required to do so by law.

## A LICENSE HOLDER CAN SHOW PROPERTY TO A BUYER/TENANT WITHOUT REPRESENTING THE BUYER/TENANT IF:

- The broker has not agreed with the buyer/tenant, either orally or in writing, to represent the buyer/tenant;
- The broker is not otherwise acting as the buyer/tenant's agent at the time of showing the property;
- The broker does not provide the buyer/tenant opinions or advice regarding the property or real estate transactions generally; and
- The broker does not perform any other act of real estate brokerage for the buyer/tenant.

Before showing a residential property to an unrepresented prospective buyer, a license holder must enter into a written agreement that contains the information required by section 1101.563 of the Texas Occupations Code. The agreement may not be exclusive and must be limited to no more than 14 days.

**LICENSE HOLDER CONTACT INFORMATION:** This notice is being provided for information purposes. It does not create an obligation for you to use the broker's services. Please acknowledge receipt of this notice below and retain a copy for your records.

**Silver Oak Commercial Realty, LLC**

**9000679**

**info@silveroakcre.com**

**817-849-8282**

Name of Sponsoring Broker (Licensed Individual or Business Entity)

License No.

Email

Phone

James Leatherwood

0493949

jleatherwood@silveroakcre.com

817-849-8282

Name of Designated Broker of Licensed Business Entity, if applicable

License No.

Email

Phone

Name of Licensed Supervisor of Sales Agent/Associate, if applicable

License No.

Email

Phone

Russ Webb

488983

rwebb@silveroakcre.com

817-849-8282

Name of Sales Agent/Associate

License No.

Email

Phone

Buyer/Tenant/Seller/Landlord Initials

Date