

# PLAZA BUILDING

1621 SW TAYLOR ST, PDX, OR 97205

@ Press Blocks



*The Plaza Building @ Press Blocks is a striking new addition to Portland's vibrant Stadium District in the Goose Hollow neighborhood. As part of the Press Blocks' three-building development, the Plaza Building's rugged industrial design pays homage to the historic Oregonian printing press that operated on the site for decades. This boutique property offers a rare opportunity for a modern workspace. Ideally situated at the nexus of the West End, the Pearl District, and Portland's Alphabet District, it is just one block from Providence Park and the Multnomah Athletic Club.*

For information on office leasing, please contact:

Apex Real Estate Partners  
415 NW 11<sup>th</sup> Avenue  
Portland, OR 97209  
503.595.2840 / [www.apexcre.com](http://www.apexcre.com)

Matt Cole  
Managing Director  
503.595.2827  
[Matt@apexcre.com](mailto:Matt@apexcre.com)

Nathan Sasaki  
Executive Director  
503.595.2843  
[Nathan@apexcre.com](mailto:Nathan@apexcre.com)







# HIGHLIGHTS



± 25,000 SF of available office



± 12,500 SF flexible floor plates



Steel construction with exposed glulam beams



Expansive ceiling heights & oversized windows



Large 3<sup>rd</sup> floor deck offers ample outdoor space



Dynamic outdoor central plaza for collaboration & relaxation



Targeting LEED Gold



Building naming opportunities available







# HIGHLIGHTS



Delivered Q3 2025



On-site storage options



Secure bike parking



Public transit just steps away with a Max stop right in front



Spa inspired shower & locker facilities



± 1.5/1,000 SF below grade parking with direct elevator service to office levels



Quick access to I-405, I-5, Hwy 26 on-ramps



Steps to Providence Park & the Multnomah Athletic Club





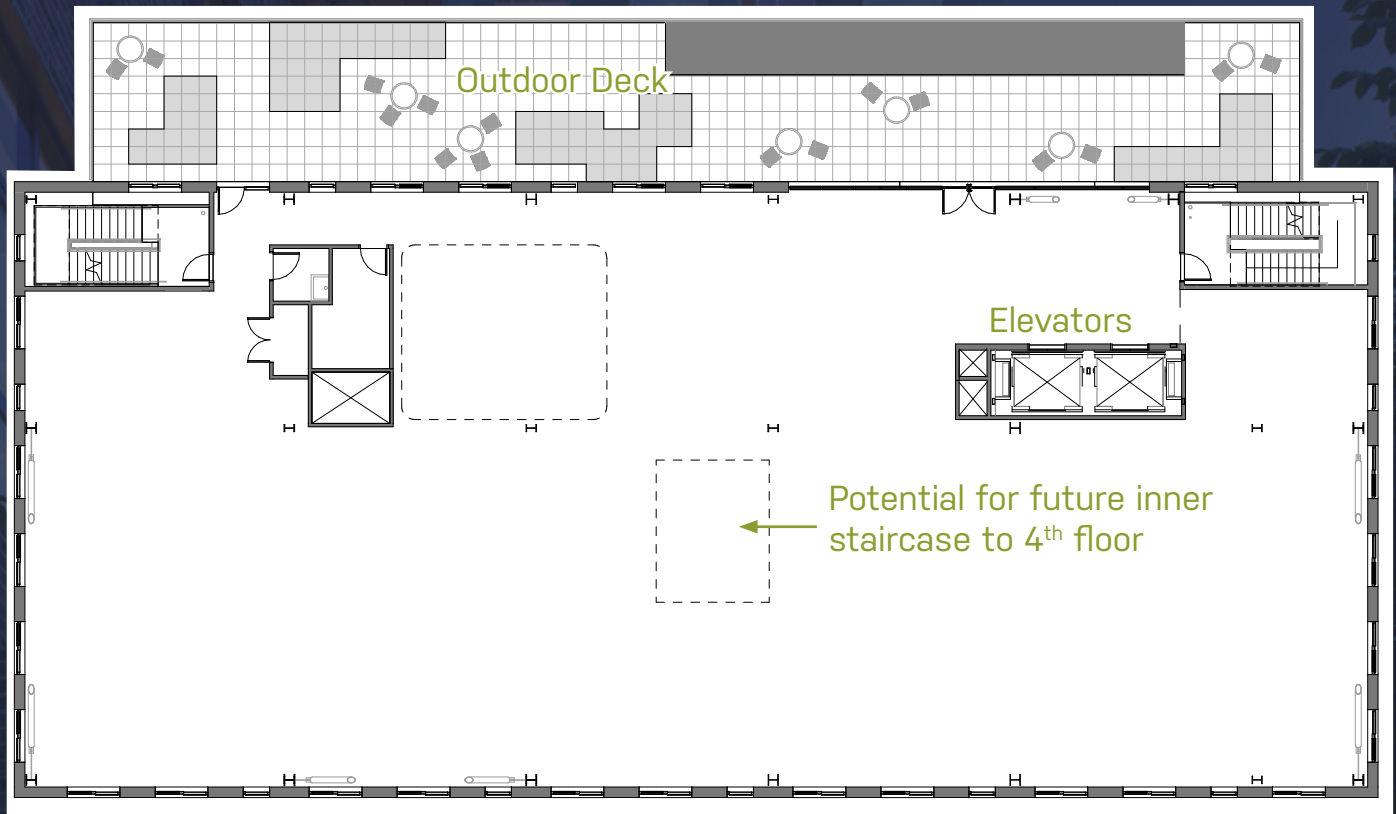
# 1<sup>ST</sup> FLOOR

The Byline Plaza is home to a vibrant mix of office, retail, and live/work tenants. A shared common lobby activates the building, serving as a central hub for connection. Surrounded by lively pedestrian activity, the building's dynamic outdoor space further enhances opportunities for collaboration and entertainment.

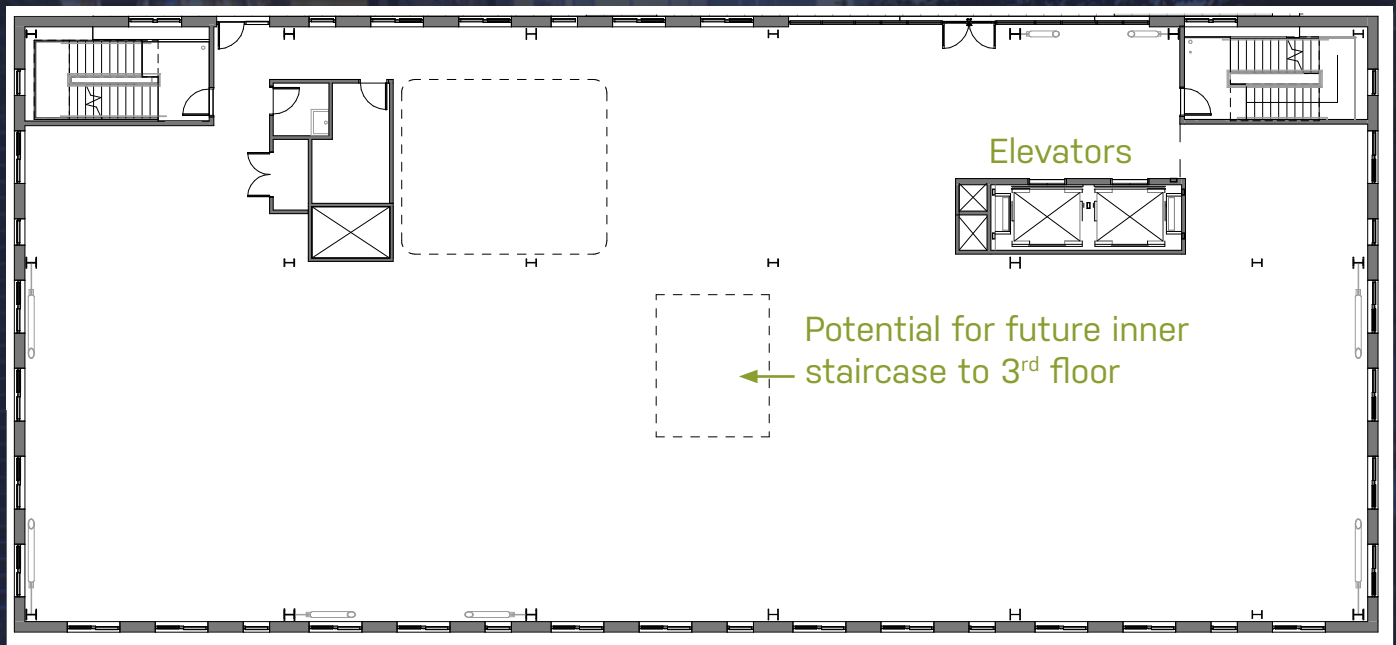




# 3<sup>RD</sup> FLOOR



# 4<sup>TH</sup> FLOOR



# HOTSPOT

Portland boasts a diverse economy with strong sectors in technology, outdoor apparel, and manufacturing. The city hosts a range of regional and national companies, including several key headquarters, some with a history of a downtown foothold and others who have recently relocated to the Stadium District area to capitalize on the vibrant business environment and enhance their presence in this thriving area.



TVA Architects - celebrating its 40 year anniversary - is relocating to Canvas Building @ Press Blocks. The 1<sup>st</sup> floor location will allow the firm's employees to more easily interact with the busy streetscape around them. TVA views its new office as an opportunity to help PDX regain its vibrancy.

NW Couch Street



**Allied Works** Allied Works is a multifaceted creative firm focusing on the design and beauty of architecture, information and objects. Allied Works was founded over 20 years ago and has a location in NYC and PDX.

Burnside Street

SW 17<sup>th</sup> Avenue

SW Morrison Street

SW Yamhill Street

SW Taylor Street

SW Salmon Street

The renovations at Providence Park have revitalized the community, driving growth and bolstering support for local businesses.



HOKA, deemed the latest Nike rival to cement a footprint in Portland. This fast-growing athletic footwear company has set its new Portland HQ at the Canvas Building @ Press Blocks.



Migration Brewing may not be an office HQ, but this award-winning craft brewery is another company looking to contribute to the vibrancy of the Stadium District. Located on the roof-top of the Canvas Building @ Press Blocks, this pop-up creates an unforgettable experience.





# DEVELOPMENT

Multifamily demand in the area continues to surge, with activity on the rise. The Press Blocks are currently adding  $\pm$  331 residential units, which will further enhance the energy of the neighborhood. Additionally,  $\pm$  214 apartments were completed summer 2024 at the Tiller Terrace, and another  $\pm$  600 units have been completed within the past four years, all within walking distance of the Press Blocks.



Alta Peak  
Apartments  
 $\pm$  138 units  
Completed 2020



Alta ART Tower  
Apartments  
 $\pm$  313 units  
Completed 2022



Tiller Terrace  
Apartments  
 $\pm$  214 units  
Completed  
Summer 2024



Sawbuck  
Apartments  
 $\pm$  182 units  
Completed 2021



Press Blocks  
Apartments  
 $\pm$  341 units  
Delivery Q4 2025

SW Alder Street

SW Morrison Street

SW 17th Avenue

SW Ya

SW Taylor Street

Mon Street

# PRIME LOCATION

Portland consistently ranks among America's best cities, celebrated as a top destination to work, live, and play. Known for its energy, downtown perfectly captures this spirit with its eclectic mix of award-winning dining, dynamic entertainment, local boutiques, trendy hotels, lively nightlife, upscale apartments, and inspiring galleries. Byline Plaza is ideally positioned right in the heart of it all - offering the perfect balance of convenience and excitement.

