

OFFICE SPACE

For Lease



Monthly Rent: \$2,050

***Tenant Covers for Gas & Electricity*

5 private offices, Reception area, bathroom, storage room, brand new paint, LED lighting and more!

Property Features

- + **2,135sqft** office space located off 71st and Memorial
- + **Flexible office** suite in a **prime location**—ideal for growing teams or established businesses
- + **Professionally managed** space featuring an open floor plan, private offices, a conference room, and high-speed internet.
- + **Convenient access** with **on-site parking**
- + **Move-in ready** and **customizable** to fit your business needs

Contact us!

918-228-5208

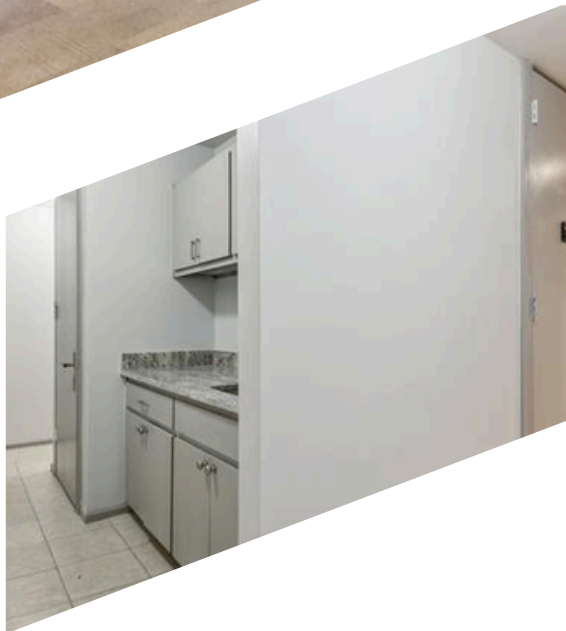
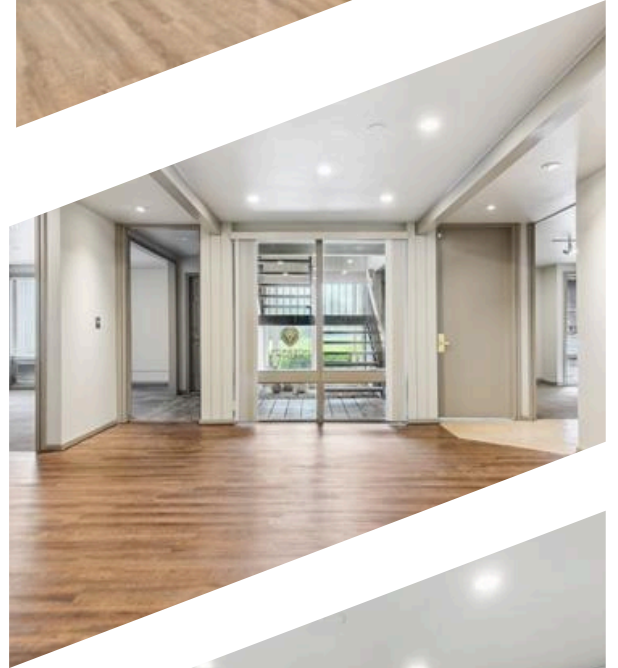
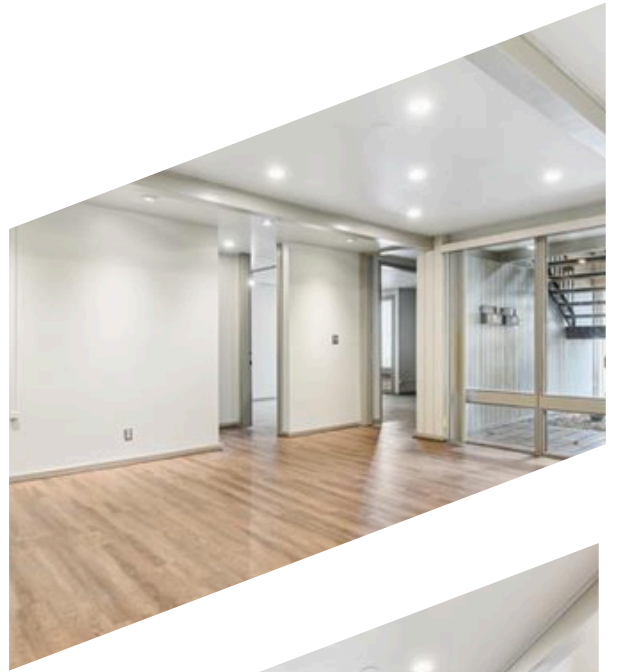
Listed By - Josh Gerig

Josh@GerigGroup.com
www.GerigGroup.com



GERIG GROUP
REAL ESTATE

**7225 S 85TH EAST AVENUE
UNIT #200
TULSA, OK 74133**



Contact us!

918-228-5208

Listed By - Josh Gerig

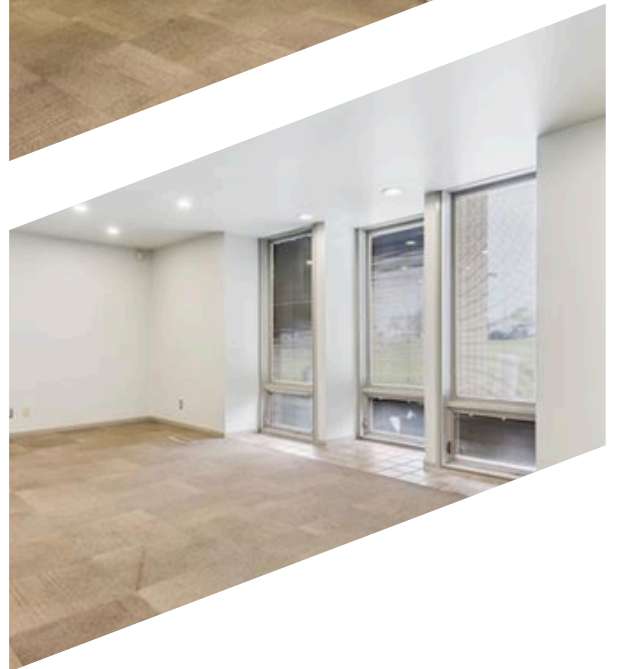
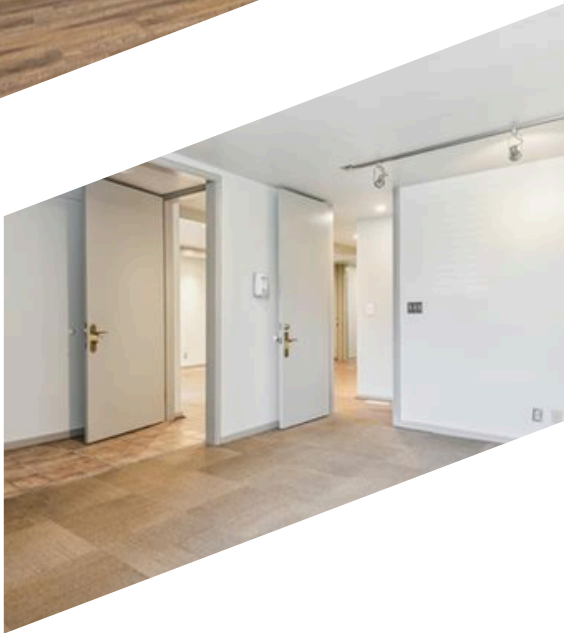
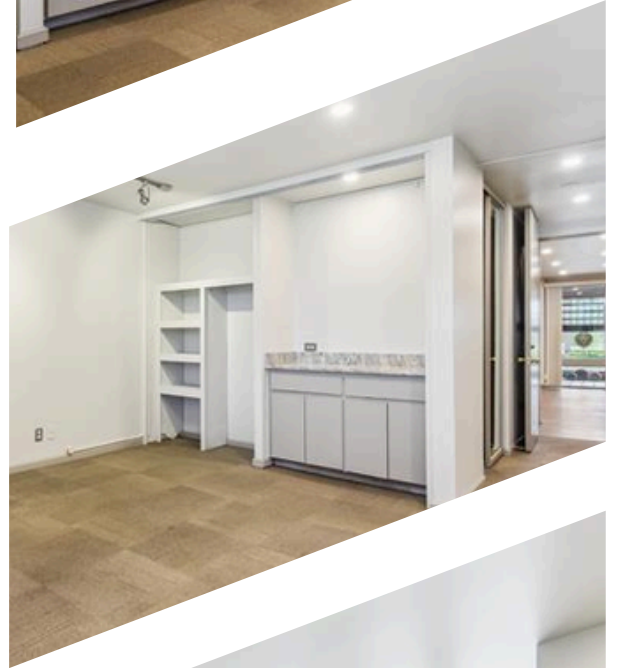
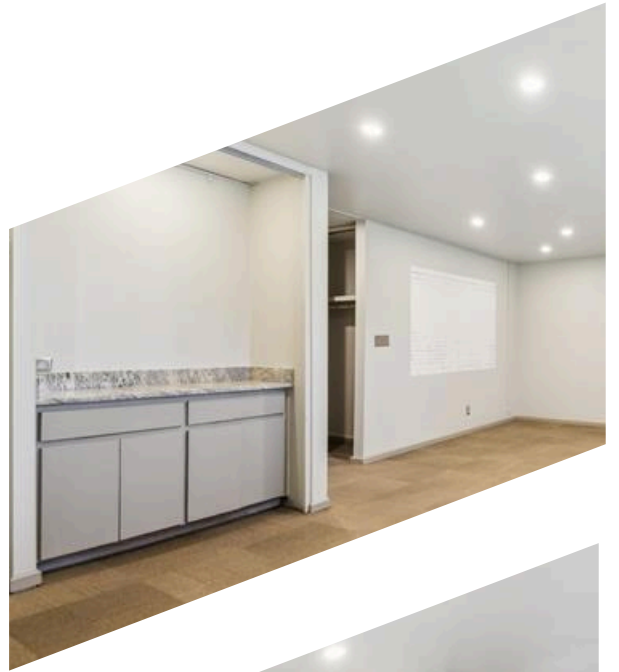
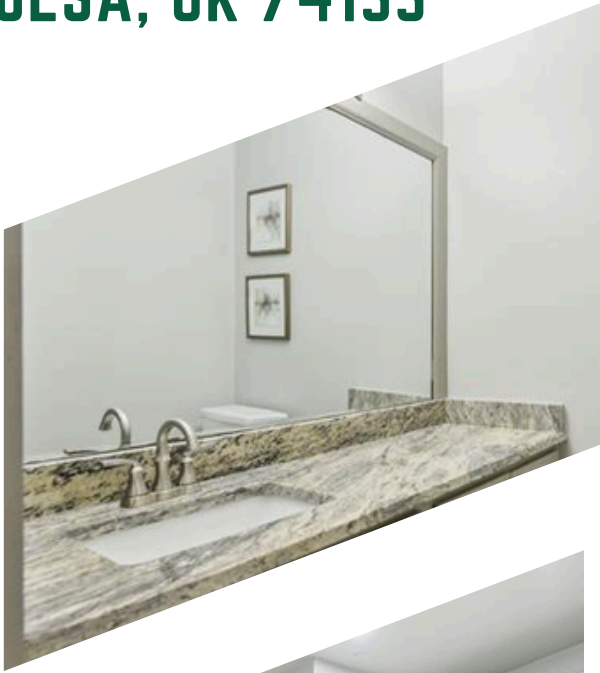
Josh@GerigGroup.com

www.GerigGroup.com



GERIG GROUP
REAL ESTATE

**7225 S 85TH EAST AVENUE
UNIT #200
TULSA, OK 74133**



Contact us!

918-228-5208

Listed By - Josh Gerig

Josh@GerigGroup.com

www.GerigGroup.com



GERIG GROUP
REAL ESTATE