

±850 SF OFFICE SUITE FOR LEASE AT CORAL TREE BUSINESS CENTER



5780 CHESAPEAKE COURT
SAN DIEGO, CA 92123

Greg Marx, SIOR
Senior Vice President | Lic.#01940696
858.458.3302 | gmarx@voitco.com

Carter Shannon
Associate | Lic.#02244724
858.458.3303 | cshannon@voitco.com

Voit
REAL ESTATE SERVICES

PROJECT FEATURES

- ±16,836 SF Building
- Suite Sizes from 850 SF to 2,750 SF
- Drive Around Truck Access
- 5 Grade Level Loading Doors (Select Industrial Suites)
- 2.35/1,000 Parking Ratio
- Outstanding Freeway Access Located Near Highways 52 and 163 and Interstate 15 and 805



AVAILABILITY

ADDRESS	SIZE	RENT	AVAILABLE	TO SHOW	COMMENTS
5780 Chesapeake Court Suites 21&22	850 SF	\$1.75 Gross	Immediately	Appointment. Call Broker.	100% Office.

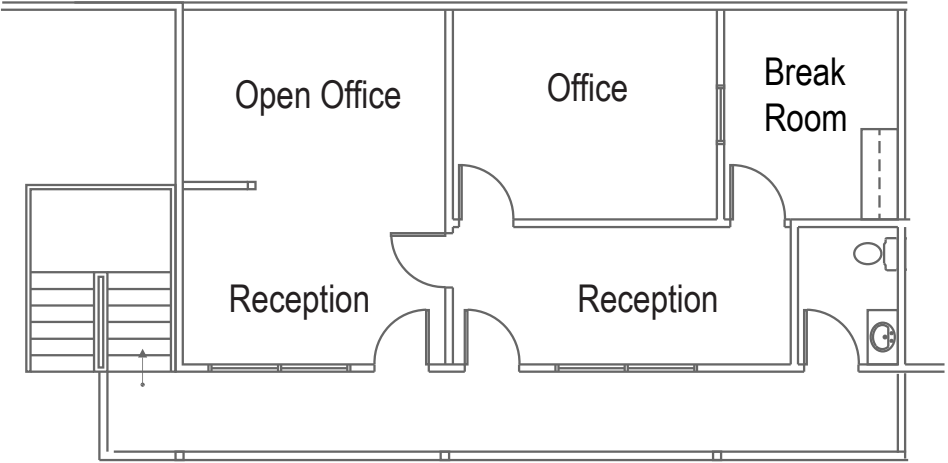


CHESAPEAKE CT

FLOOR PLAN

5780 CHESAPEAKE COURT

SUITES 21 & 22



SIZE	850 SF
LEASE RATE	\$1.75 Gross
AVAILABLE	Immediately
TO SHOW	Appointment. Call Broker.
COMMENTS	100% Office





5780

CHESAPEAKE COURT
SAN DIEGO, CA 92123

Voit

REAL ESTATE SERVICES



Greg Marx, SIOR
Senior Vice President | Lic.#01940696
858.458.3302 | gmarx@voitco.com

Carter Shannon
Associate | Lic.#02244724
858.458.3303 | cshannon@voitco.com

4180 La Jolla Village Drive, Suite 100, La Jolla, CA 92037 | Lic #01991785 | www.voitco.com

Licensed as Real Estate Salespersons by the DRE. ©2026 Voit Real Estate Services, Inc. All Rights Reserved. The information contained herein has been obtained from sources we deem reliable. While we have no reason to doubt its accuracy, we do not guarantee it.