

# FSP

FIRST STAMFORD PLACE

*Institutional Office Complex Near the Train*  
Up to 75,000 SF Available | Prebuilt Spaces from 2,500 SF



NEWMARK

# Prime Location

- Steps away from Hilton Stamford Hotel
- 1 minute from Interstate 95, via exit 7
- 1/2 mile away from Stamford's CBD
- 3 minute drive to burgeoning Harbor Point
- 5 minute walk to Stamford Train Station
- 12 minute drive to Merritt Parkway



# Drive Times

- Greenwich, CT ..... 10 min.
- White Plains, NY..... 19 min.
- Westchester County Airport..... 23 min.
- Laguardia Int. Airport ..... 40 min.
- New Haven, CT ..... 45 min.
- JFK Int. Airport ..... 53 min.
- Manhattan..... 57 min.



# FSP

FIRST STAMFORD PLACE

*Strategically  
Located with  
Water Views*

**JAMES RITMAN**  
203-531-3606  
james.ritman@nrmk.com

**GREG FRISOLI**  
203-531-3605  
gregory.frisoli@nrmk.com

**BENJAMIN GOLDSTEIN**  
203-705-3295  
benjamin.goldstein@nrmk.com

**NEWMARK**



# FSP

FIRST STAMFORD PLACE

## *Interior Photos & Amenities*



CONFERENCE ROOM

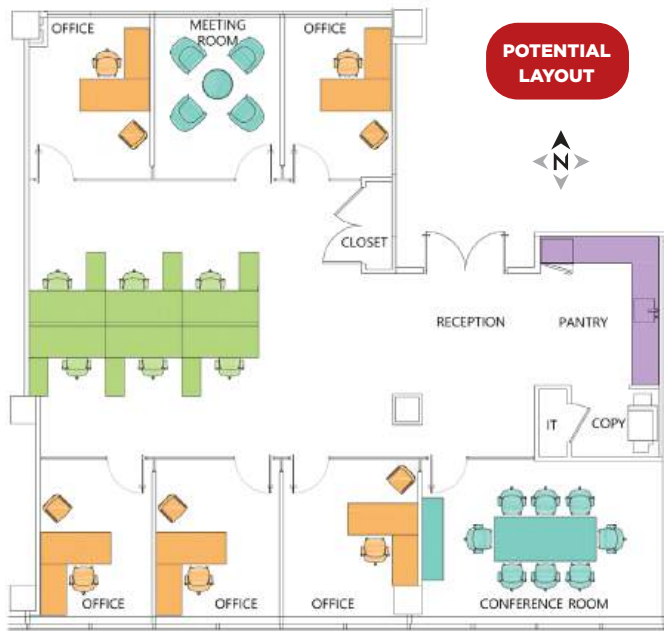


STARBUCKS CAFE



FITNESS CENTER

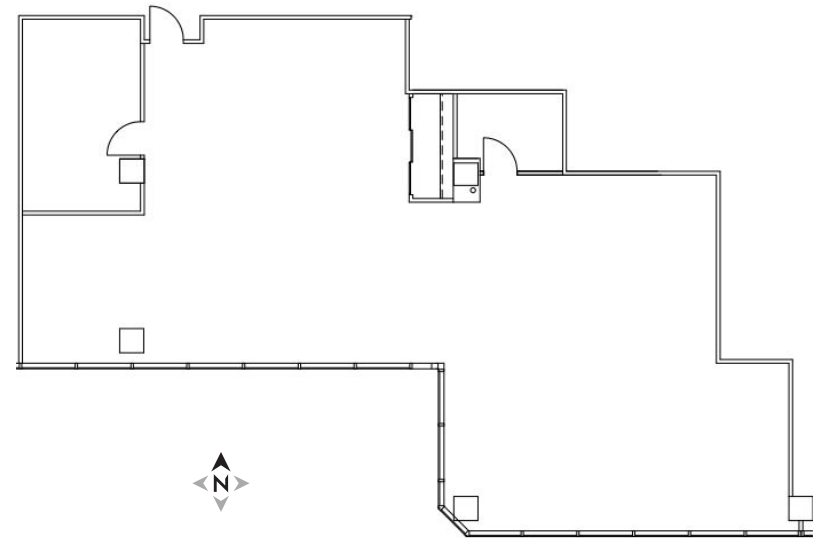
# Floor Plans



WATER VIEW

## Partial 3rd: Suite 325

Building ..... 100  
 Size ..... 2,714 SF  
 Condition ..... Second Generation to be Demoed

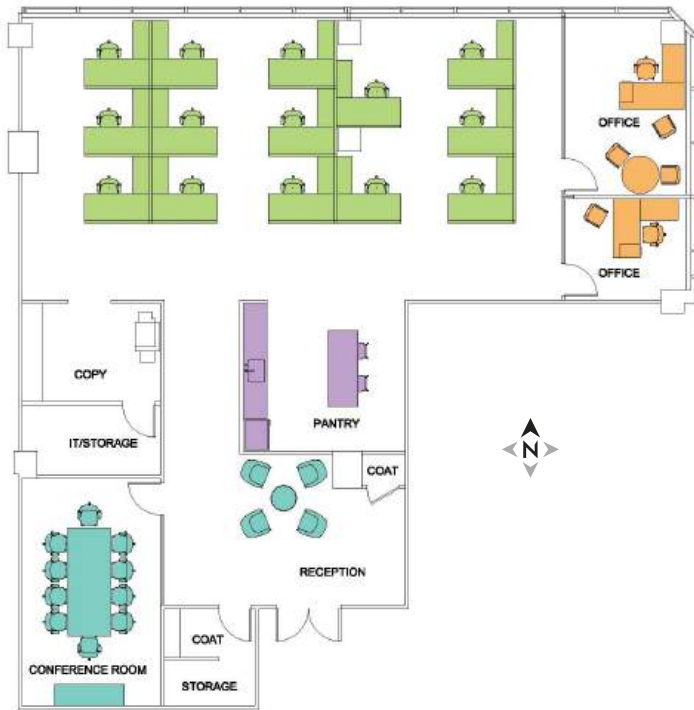


WATER VIEW

## Partial 3rd: Suite 315B

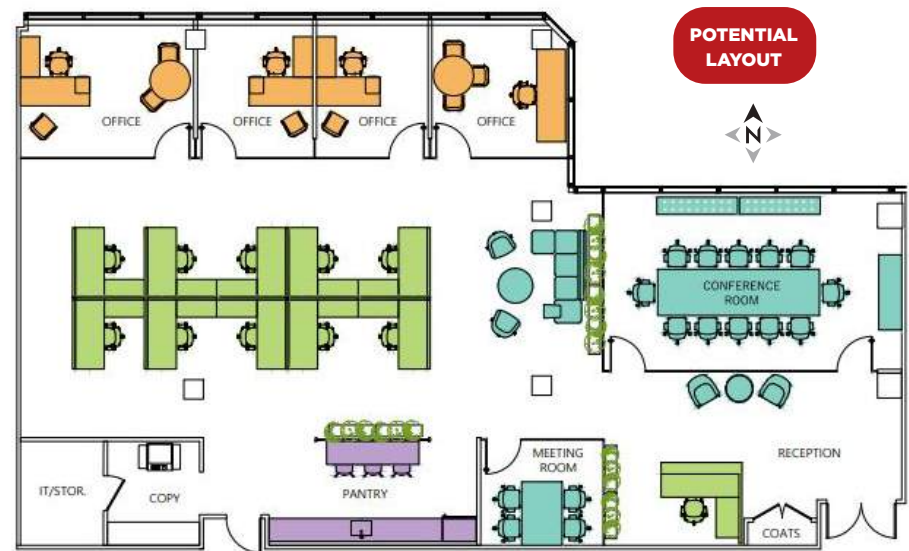
Building ..... 300  
 Size ..... 2,851 SF  
 Condition ..... Second Generation

# Floor Plans



## Partial 4th: Suite 440

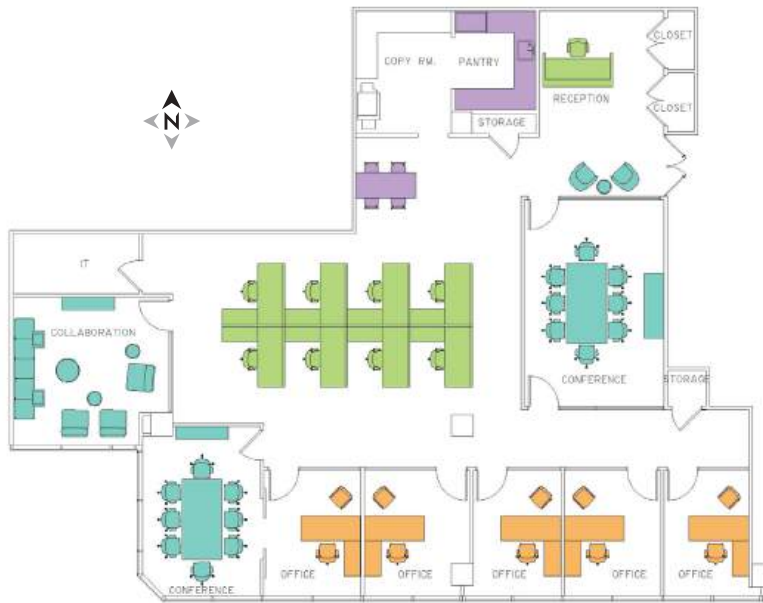
Building ..... 100  
 Size ..... 3,891 SF  
 Condition ..... Newly Renovated



## Partial 7th: Suite 780

Building ..... 300  
 Size ..... 4,118 SF  
 Condition ..... Raw

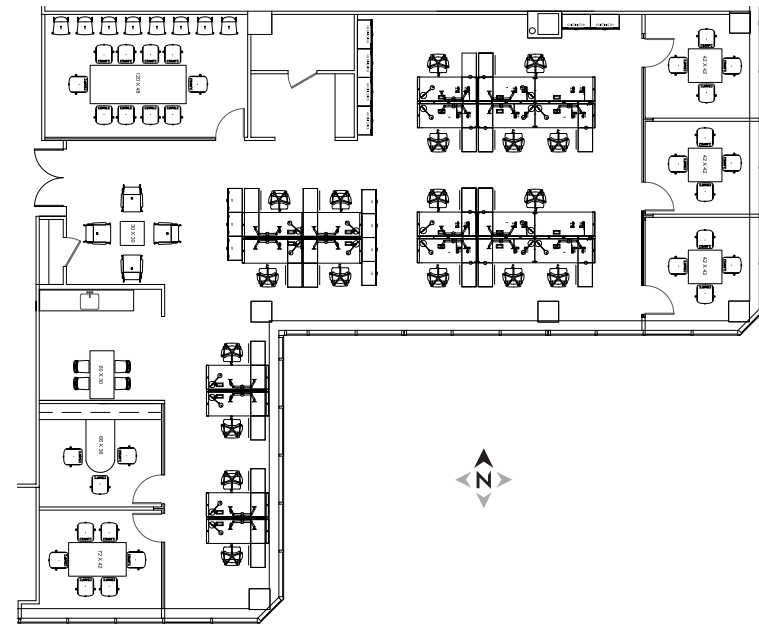
# Floor Plans



**WATER VIEW**

## Partial 4th: Suite 450

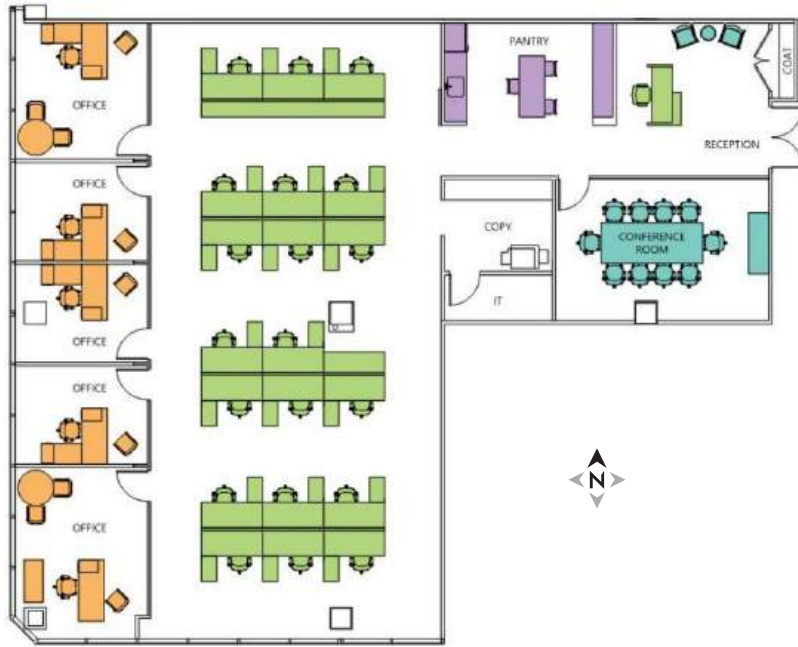
Building ..... 300  
 Size ..... 4,136 SF  
 Condition ..... Second Generation



## Partial 2nd: Suite 220

Building ..... 300  
 Size ..... 4,353 SF  
 Condition ..... Newly Renovated

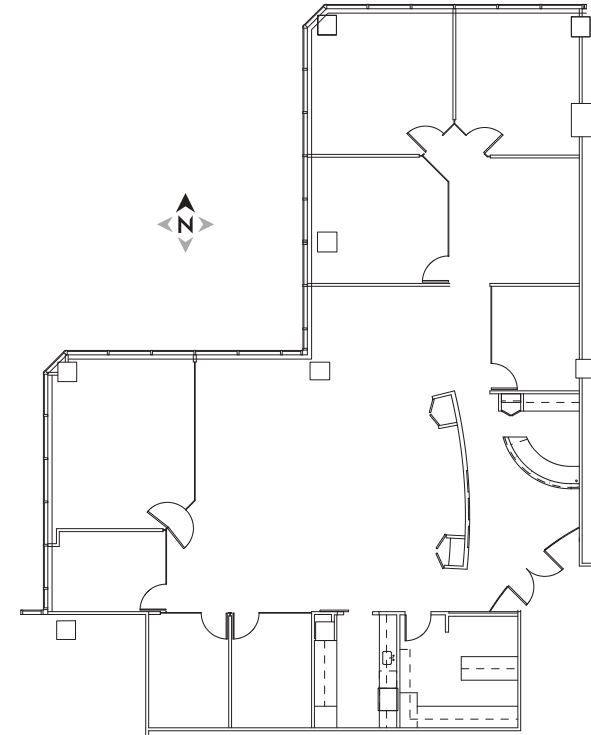
# Floor Plans



WATER VIEW

## Partial 3rd: Suite 315

Building ..... 100  
 Size ..... 4,737 SF  
 Condition ..... Second Generation

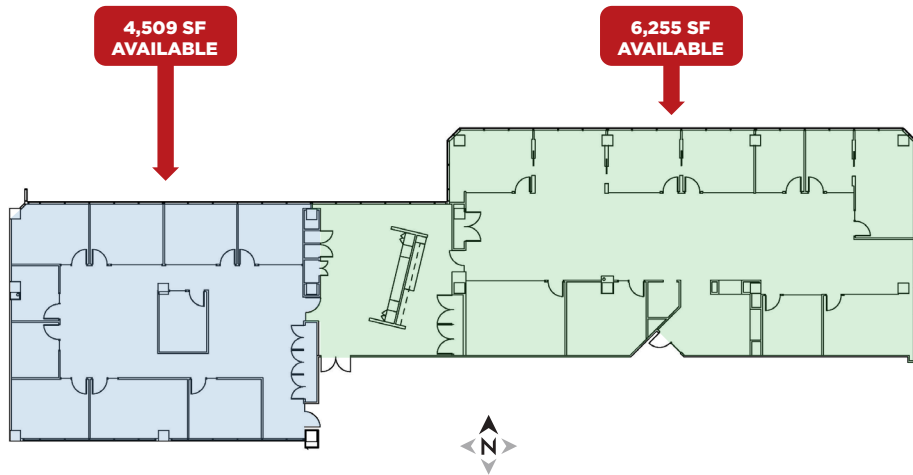


## Partial 4th: Suite 401B-425

Building ..... 100  
 Size ..... 4,853 SF  
 Condition ..... Second Generation

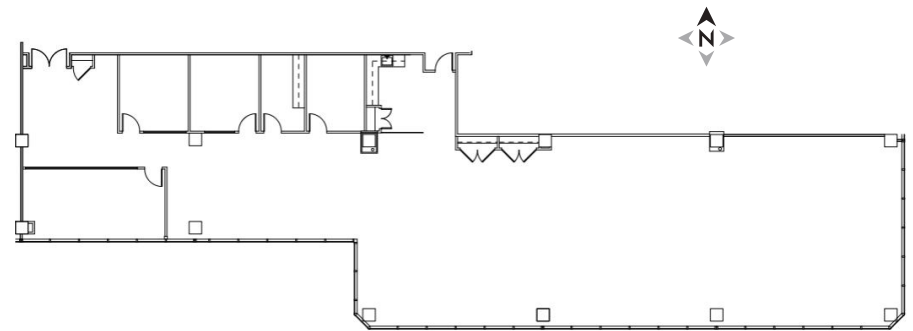


# Floor Plans



## Partial 6th: Suite 610

Building ..... 100  
Size ..... Up to 10,764 SF  
Condition ..... Second Generation

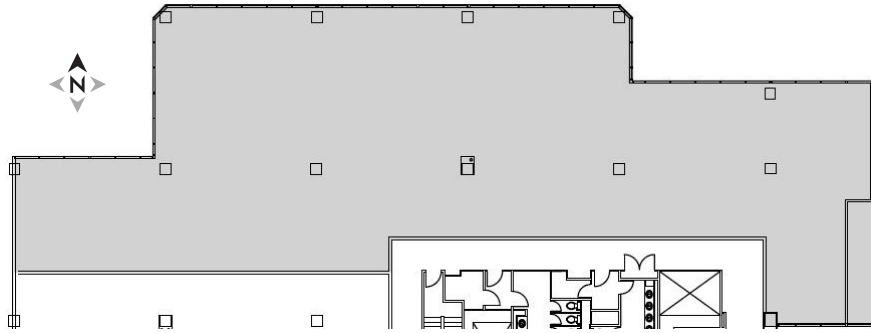


## Partial 4th: Suite 401

Building ..... 300  
Size ..... 6,954 SF  
Condition ..... Second Generation

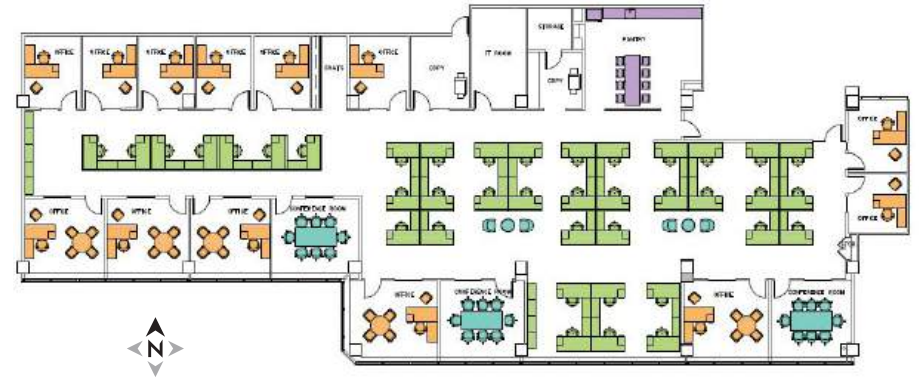
WATER VIEW

# Floor Plans



## Partial 5th: Suite 500

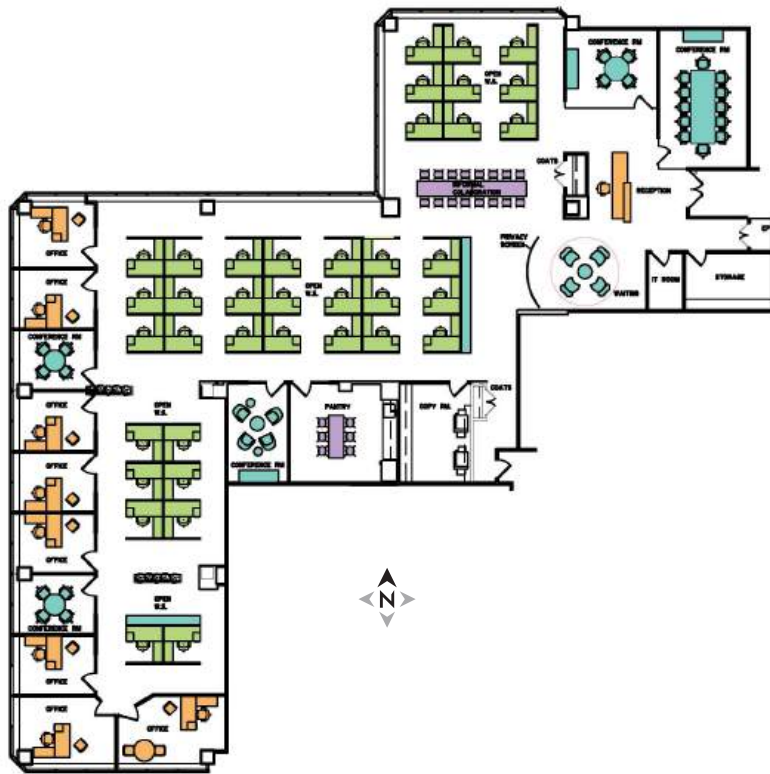
Building ..... 300  
Size ..... 9,329 SF  
Condition ..... Raw



## Partial 2nd: Suite 201

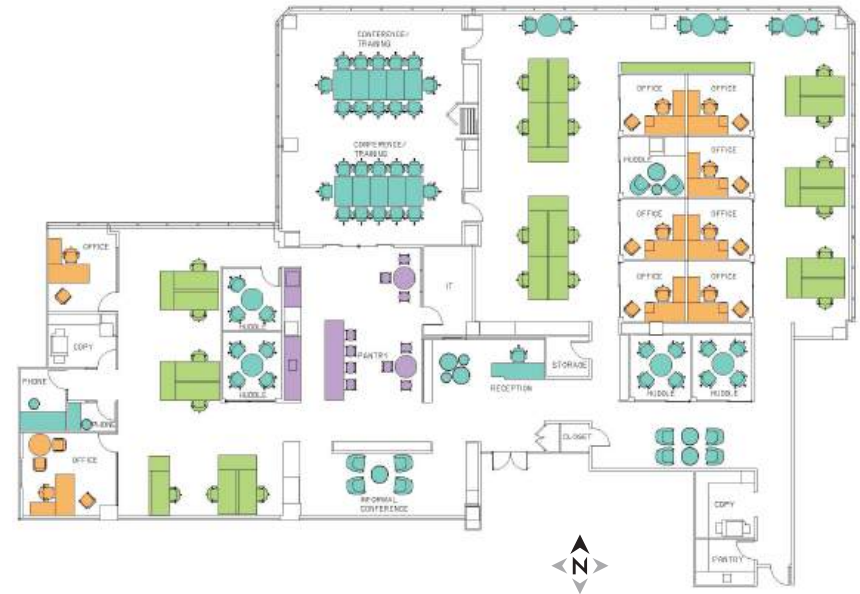
Building ..... 300  
Size ..... 10,525 SF  
Condition ..... Second Generation

# Floor Plans



## Partial 2nd: Suite 202

Building ..... 100  
 Size ..... 10,729 SF  
 Condition ..... Newly Renovated

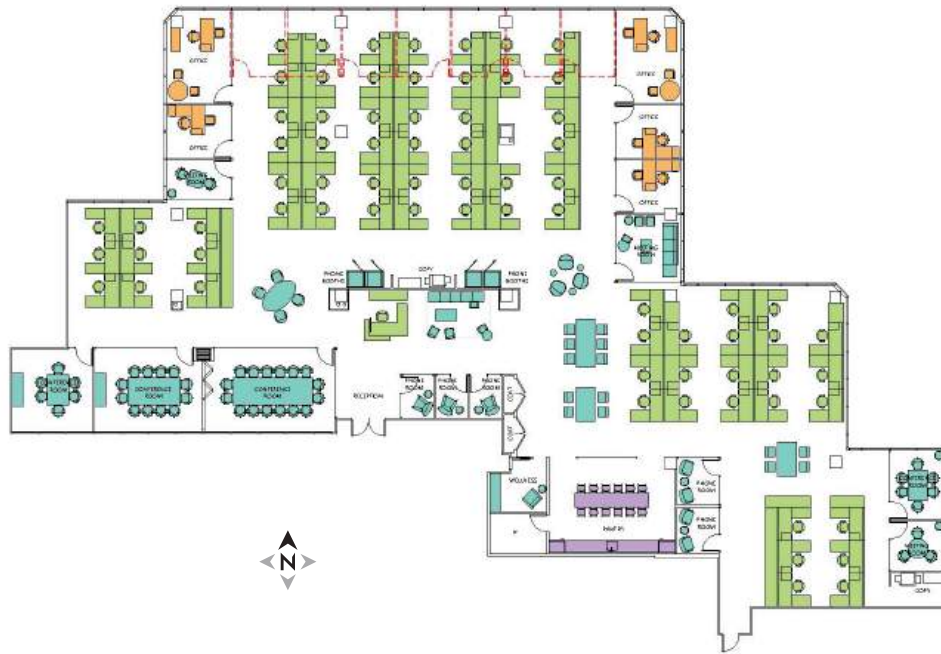


## Partial 5th: Suite 550

Building ..... 300  
 Size ..... 12,377 SF  
 Condition ..... Second Generation

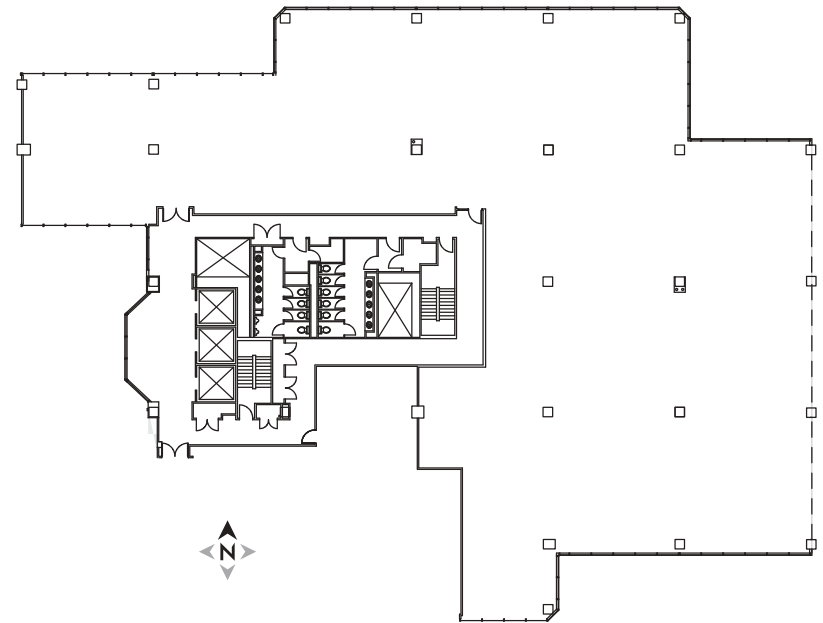
# Floor Plans

## POTENTIAL LAYOUT



### Partial 4th: Suite 400

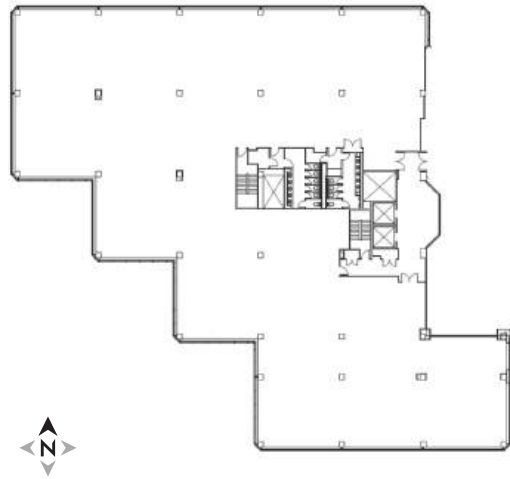
Building ..... 300  
 Size ..... 14,692 SF  
 Condition ..... Raw



### Partial 3rd: Suite 355

Building ..... 100  
 Size ..... 16,737 SF  
 Condition ..... Second Generation

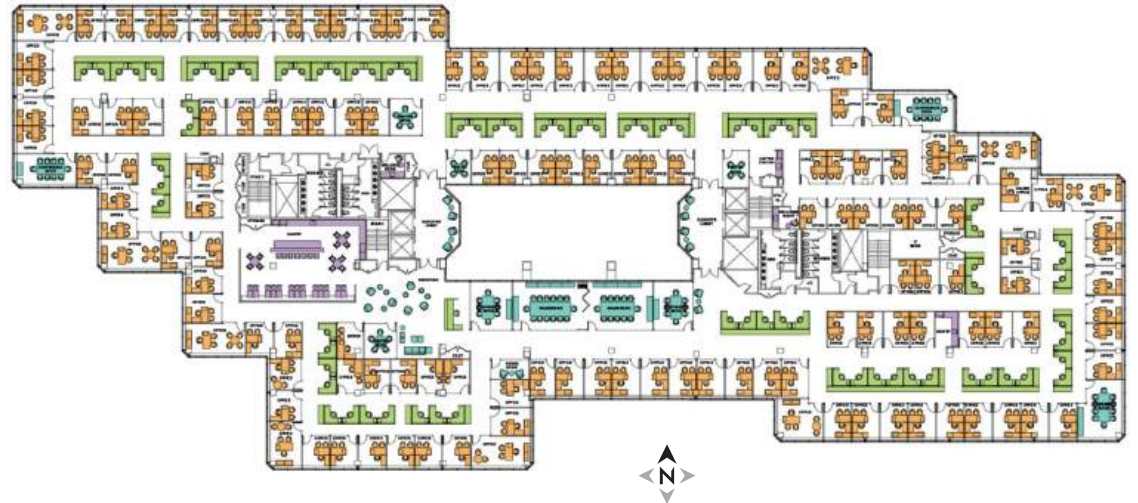
# Floor Plans: **Contiguous to 82,085 SF**



## **Partial 2nd: Suite 210**

Building ..... 200  
Size ..... 25,590 SF  
Condition ..... Raw

## **POTENTIAL LAYOUT**



## **Entire 3rd: Suite 300**

Building ..... 200  
Size ..... 56,495 SF  
Condition ..... Raw



# FSP

FIRST STAMFORD PLACE

## *Contact Exclusive Brokers*

**JAMES RITMAN**  
203-531-3606  
james.ritman@nrmk.com

**GREG FRISOLI**  
203-531-3605  
gregory.frisoli@nrmk.com

**BENJAMIN GOLDSTEIN**  
203-705-3295  
benjamin.goldstein@nrmk.com

---

The information contained herein has been obtained from sources deemed reliable but has not been verified and no guarantee, warranty or representation, either express or implied, is made with respect to such information. Terms of sale or lease and availability are subject to change or withdrawal without notice.

**NEWMARK**