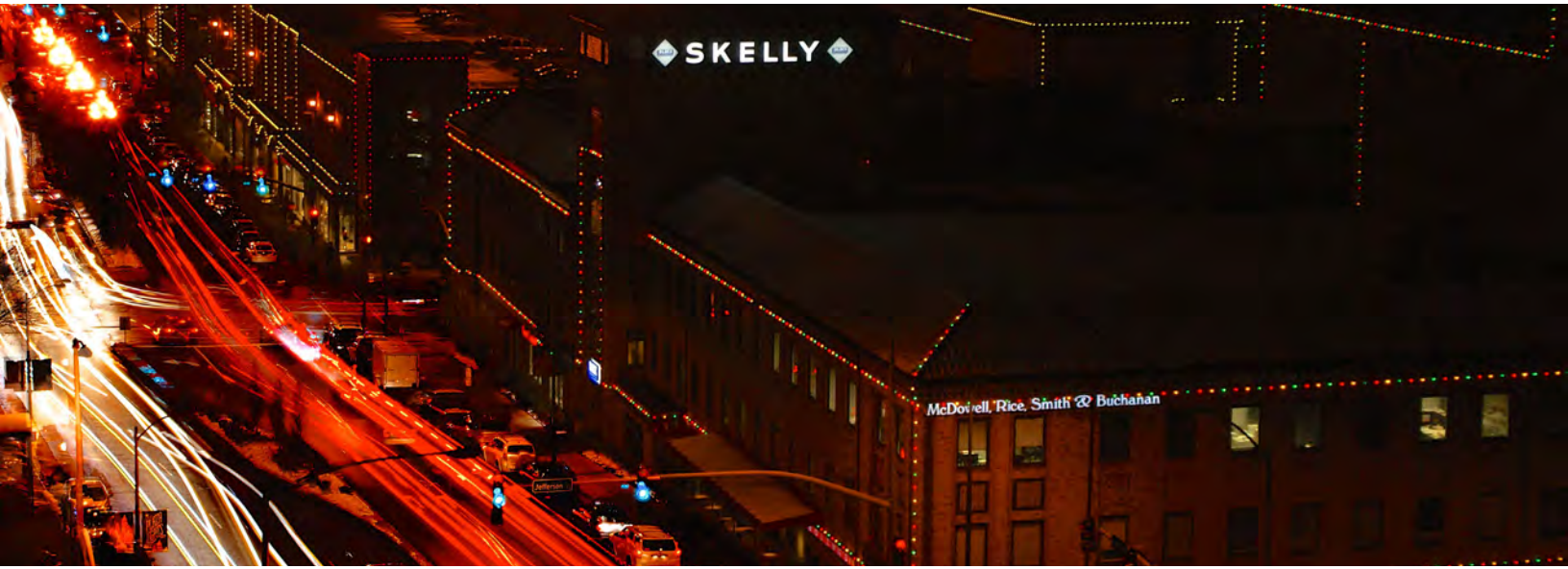




SKELLY BUILDING ON THE COUNTRY CLUB PLAZA

Kansas City's High End Retail, Restaurant, Hotel, Office, and Entertainment District - World Famous Since 1922



2,953 SF RETAIL/RESTAURANT 1ST FLOOR SPACE FOR LEASE

DEMOGRAPHICS

| | 1 mile | 3 miles | 5 miles |
|-----------------------|-----------|-----------|----------|
| Estimated Population | 19,987 | 117,434 | 272,556 |
| Avg. Household Income | \$100,651 | \$102,298 | \$86,246 |

- 2,953 SF Retail Space (1st Floor) | 5,321 SF (2nd Floor) & 2,300 SF (P2 Level) Office Spaces Available
- One of Kansas City's best retail locations
- Join over 150 exciting national, regional, and local retailers
- Major building signage available
- Possible roof expansion for retail, fitness, or hotel

 [CLICK HERE TO VIEW MORE LISTING INFORMATION](#)

For More Information Contact: *Exclusive Agents*
 DAVID BLOCK | 816.412.7400 | dblock@blockandco.com
 ALEX BLOCK | 816.412.7373 | ablock@blockandco.com
 MAX KOSOGLAD | 816.412.7363 | mkosoglad@blockandco.com

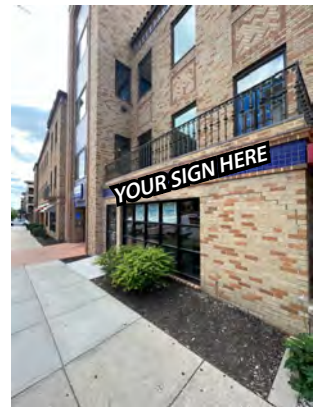
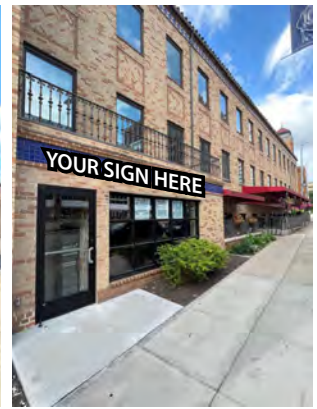
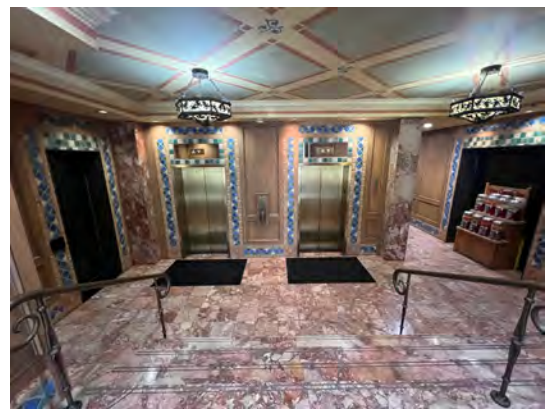




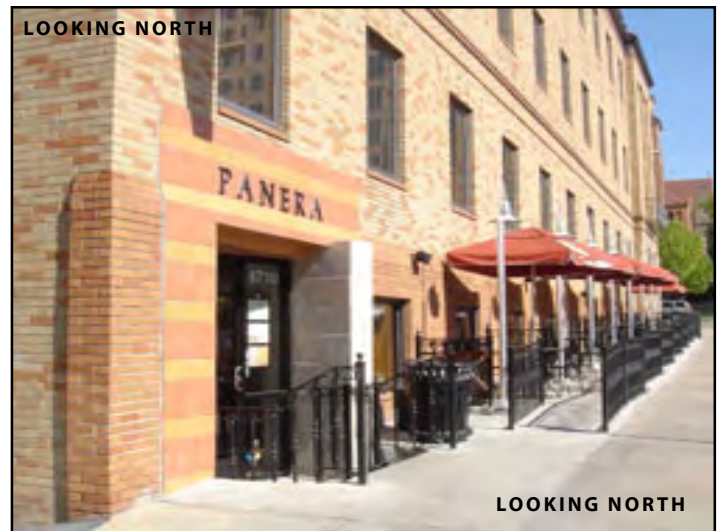
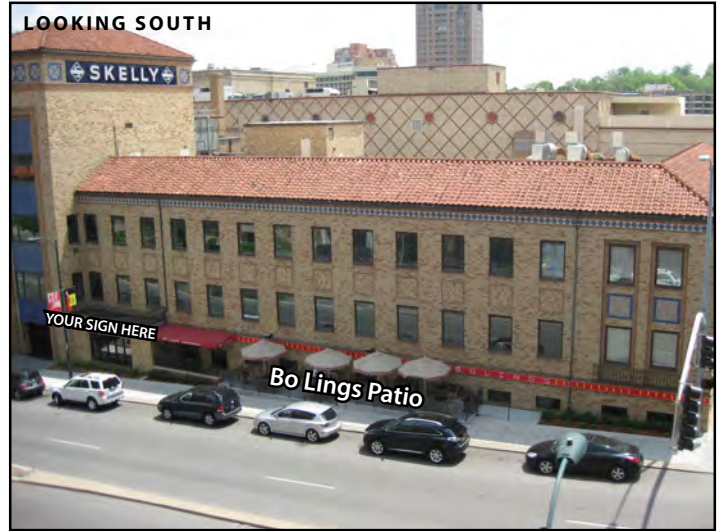
SKELLY BUILDING ON THE COUNTRY CLUB PLAZA

Kansas City's High End Retail, Restaurant, Hotel, Office, and Entertainment District - World Famous Since 1922

PHOTOS



EXTERIOR PHOTOS





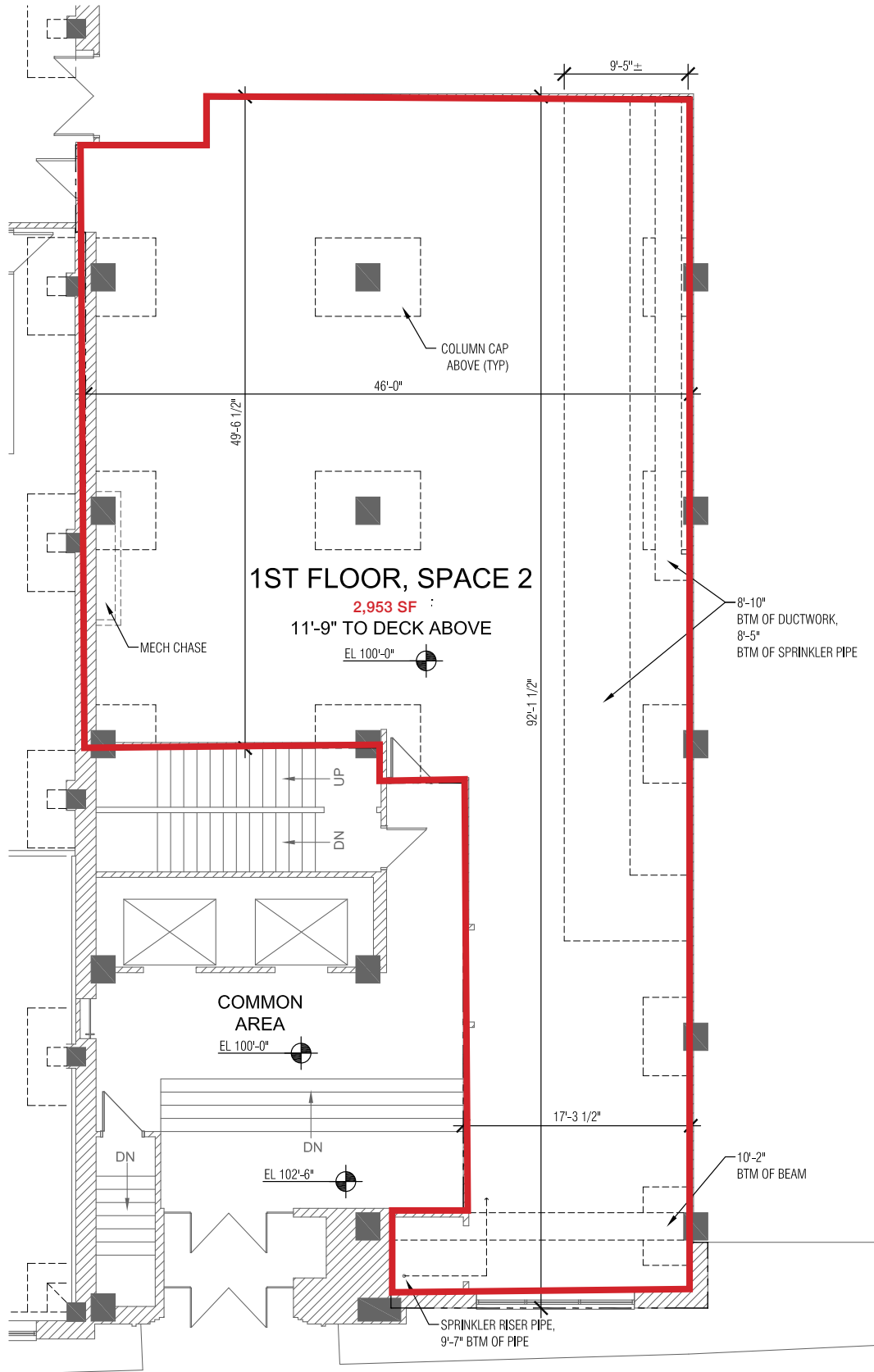
SKELLY BUILDING ON THE COUNTRY CLUB PLAZA

Kansas City's High End Retail, Restaurant, Hotel, Office,
and Entertainment District - World Famous Since 1922

AERIAL PHOTOS



RETAIL/RESTAURANT SPACE PLAN (1ST FLOOR)





COUNTRY CLUB PLAZA



NEW TO THE PLAZA

| | |
|--------------------------------------|----------|
| 27 Bambou Salons ◉ | 561-1302 |
| 154 Bruu Café ◉ ✕ | 239-3249 |
| 109 EB & Co. ◉ | 214-6223 |
| 63 Kindred Shops ◉ | 492-7287 |
| 115 Matches Boutique ◉ ✕ | 255-3159 |
| 102 Messenger – 47th Street ◉ | 326-8644 |
| 31 Messenger – Jefferson ◉ | 437-8445 |
| 151 Nickel & Suede ◉ | 499-8811 |
| 143 Rally House – East ◉ | 384-0581 |
| 124 Sterling Bank (ATM) ✕ | 627-6600 |

WOMEN'S APPAREL / ACCESSORIES

| | |
|---|--------------|
| 66 Altar'd State | 865-6100 |
| 16 Anthropologie | 531-4429 |
| 11 Athleta | 753-7557 |
| 57 Chico's | 931-3777 |
| 77 Eileen Fisher ✕ | 531-5566 |
| 145 Evereve | 569-2253 |
| 58 Francesca's Collections | 531-5141 |
| 67 Free People ✕ | 531-2669 |
| 120 kate spade new york ✕ | 756-5244 |
| 63 Kindred Shops ◉ | 492-7287 |
| 122a Madewell | 756-5365 |
| 115 Matches Boutique ◉ ✕ | 255-3159 |
| 119 Michael Kors ✕ | 531-2038 |
| 151 Nickel & Suede ◉ | 499-8811 |
| 128 Ricca Sposa Bridal ✕ | 913-709-4615 |
| 79 Soft Surroundings ✕ | 756-5040 |
| 20 Terrasi Living & Scandia Home ◉ ✕ | 753-4144 |
| 70 Victoria's Secret | 531-2650 |
| 109 White House Black Market | 960-0580 |

MEN'S & WOMEN'S APPAREL / ACCESSORIES

| | |
|---------------------------------|--------------|
| 39 Banana Republic | 753-1157 |
| 53a Charlie Hustle ◉ ✕ | 541-4387 |
| 73 Express | 753-7151 |
| 42 H&M | 960-1030 |
| 68 Indochino ✕ | 855-334-0788 |
| 17 J.Crew | 753-9744 |
| 118 J.McLaughlin ✕ | 960-3754 |
| 54 Lucky Brand Jeans ✕ | 753-5823 |
| 80 lululemon | 531-2894 |
| 184 Marine Layer ✕ | 569-0276 |
| 50 Moosejaw | 832-4493 |
| 43 The North Face ✕ | 931-4439 |
| 104 Old Navy | 756-0300 |
| 143 Rally House – East ◉ | 384-0581 |
| 91 Rally House – West ◉ | 756-5409 |
| 101 Tommy Bahama ✕ | 531-8688 |
| 152 UNTUCKit ✕ | 216-1455 |
| 13 Urban Outfitters ✕ | 753-8500 |
| 48 Vans | 531-2058 |
| 53b vineyard vines ✕ | 800-5128 |
| 171 XXI Forever | 753-7473 |

ACCESSORIES / OPTICAL / LUGGAGE

| | |
|------------------------------------|----------|
| 146 Brighton Collectibles ✕ | 531-8138 |
| 100 Coach | 561-1771 |
| 109 EB & Co. ◉ | 214-6223 |
| 120 kate spade new york ✕ | 756-5244 |
| 119 Michael Kors ✕ | 531-2038 |
| 26 Milan Optique ◉ ✕ | 569-2700 |
| 74 Sunglass Hut | 531-4340 |
| 57 Tumi ✕ | 753-4306 |
| 122b Warby Parker ✕ | 298-0660 |

SHOES

| | |
|---|----------|
| 59 Aldo | 531-4790 |
| 39 Banana Republic | 753-1157 |
| 146 Brighton Collectibles ✕ | 531-8138 |
| 120 kate spade new york ✕ | 756-5244 |
| 119 Michael Kors ✕ | 531-2038 |
| 50 Moosejaw | 832-4493 |
| 131 Renner's Boots, Shoes & Repair ◉ ✕ | 561-0740 |
| 48 Vans | 531-2058 |

CHILDREN'S APPAREL

| | |
|---------------------------------|----------|
| 53a Charlie Hustle ◉ ✕ | 541-4387 |
| 42 H&M | 960-1030 |
| 17 J.Crew Crewcuts | 753-9744 |
| 43 Old Navy | 931-4439 |
| 143 Rally House – East ◉ | 384-0581 |
| 91 Rally House – West ◉ | 756-5409 |
| 53b vineyard vines ✕ | 800-5128 |
| 171 XXI Forever | 753-7473 |

GIFTS / SPECIALTY STORES

| | |
|---|--------------|
| 144 3DHQ ◉ ✕ | 913-204-1234 |
| 185 Apple | 448-9200 |
| 44 Barnes & Noble Booksellers | 753-1313 |
| 72 Bath & Body Works | 561-1613 |
| 88 Beauty Brands ◉ | 753-8822 |
| 121 Casper ✕ | 301-7431 |
| 85 Diebel's Sportsmens Gallery ◉ | 931-2988 |
| 55 Hallmark Gold Crown ◉ | 931-4555 |
| 68 Indochino ✕ | 855-334-0788 |
| 49 IT'SUGAR ✕ | 759-8666 |
| 120 kate spade new york ✕ | 756-5244 |
| 80 lululemon | 531-2894 |
| 107 Made in KC Marketplace ◉ | 718-0806 |
| 50 Moosejaw | 832-4493 |
| 151 Nickel & Suede ◉ | 499-8811 |
| 104 The North Face ✕ | 756-0300 |
| 33 Paper Source | 753-2777 |
| 143 Rally House – East ◉ | 384-0581 |
| 91 Rally House – West ◉ | 756-5409 |
| 148 RE: Emporium ◉ | 913-274-8321 |
| 128 Ricca Sposa Bridal ✕ | 913-709-4615 |
| 64 Sephora | 753-5996 |
| 20 Terrasi Living & Scandia Home ◉ ✕ | 753-4144 |

| | |
|------------------------------|----------|
| 23 Three Dog Bakery ◉ | 753-3647 |
| 123 Tiffany & Co. ✕ | 531-7676 |
| 56 T-Mobile ◉ | 521-6300 |
| 45 west elm ✕ | 960-3765 |

HOME / ART / ANTIQUES

| | |
|---|--------------|
| 16 Anthropologie | 531-4429 |
| 107 Made in KC Marketplace ◉ | 718-0806 |
| 148 RE: Emporium ◉ | 913-274-8321 |
| 79 Soft Surroundings ✕ | 756-5040 |
| 20 Terrasi Living & Scandia Home ◉ ✕ | 753-4144 |
| 13 Urban Outfitters ✕ | 753-8500 |
| 45 west elm ✕ | 960-3765 |

JEWELRY

| | |
|----------------------------------|----------|
| 109 EB & Co. ◉ | 214-6223 |
| 61 Kendra Scott | 448-8323 |
| 151 Nickel & Suede ◉ | 499-8811 |
| 123 Tiffany & Co. ✕ | 531-7676 |
| 150 TIVOL ◉ | 531-5800 |
| 32 Vinca Fine Jewelry ◉ ✕ | 531-5591 |

PERSONAL / PROFESSIONAL SERVICES

| | |
|---|--------------|
| 21 Amazing Lash Studio | 338-0340 |
| 27 Bambou Salons ◉ | 561-1302 |
| 88 Beauty Brands ◉ | 753-8822 |
| 29 Brow Threading ◉ ✕ | 913-492-4060 |
| 175 CorePower Yoga | 897-0678 |
| 84 Country Club Carwash ◉ ✕ | 365-2641 |
| 61b Country Club Plaza Public Safety | 753-7973 |
| 62 Industrious ✕ | 281-8605 |
| 139 Larissa's Tailor Shop ◉ ✕ | 753-1209 |
| 163 Massage Envy | 994-3689 |
| 56a Mojo Cycling Studio ◉ ✕ | 561-1995 |
| 134 Plaza Hair Design ◉ ✕ | 753-2936 |
| 133 Plaza Nails ◉ ✕ | 701-6616 |
| 131 Renner's Boots, Shoes & Repair ◉ ✕ | 561-0740 |
| 141 Salon Sophia ◉ ✕ | 756-0024 |
| 56 T-Mobile | 521-6300 |
| 4 Unity Temple | 561-4466 |
| 186 The UPS Store | 561-7411 |
| 122b Warby Parker ✕ | 298-0660 |

RESTAURANTS

| | |
|--|----------|
| 12 BRIO Italian Mediterranean ✕ | 561-5888 |
| 105 Buca di Beppo ✕ | 931-6548 |
| 82 The Capital Grille ✕ | 531-8345 |
| 170 The Cheesecake Factory | 960-1919 |
| 162 Chuy's ✕ | 931-2783 |
| 111 Classic Cup Café ◉ ✕ | 753-1840 |
| 46 Cooper's Hawk Winery & Restaurant ✕ | 531-1500 |
| 174 Fiorella's Jack Stack Barbecue ◉ | 531-7427 |
| 137 Fogo de Chão ✕ | 931-7700 |
| 35 Gram & Dun ◉ ✕ | 389-2900 |
| 36 The Granfalloon Restaurant & Bar ◉ ✕ | 753-7850 |
| 89 Kona Grill ✕ | 931-5888 |

| | |
|---|----------|
| 40 McCormick & Schmick's Seafood ✕ | 531-6800 |
| 90 The Melting Pot ✕ | 931-MELT |
| 22 O'Dowd's Gastrobar ◉ ✕ | 561-2700 |
| 166 P.F. Chang's China Bistro ✕ | 931-9988 |
| 116 Potbelly Sandwich Shop | 332-4953 |
| 165 Rye ◉ | 541-3382 |
| 129 Seasons 52 ✕ | 531-0052 |
| 142 Shake Shack | 807-4030 |
| 92 True Food Kitchen ✕ | 931-4947 |
| 30 Zócalo Mexican Cuisine ◉ ✕ | 756-5555 |

SPECIALTY FOOD & WINE

| | |
|--------------------------------------|----------|
| 167 Auntie Anne's / Cinnabon | 216-1087 |
| 44 Barnes and Noble Café | 753-1313 |
| 24 The Better Cheddar ◉ | 561-8204 |
| 154 Bruu Café ◉ ✕ | 239-3249 |
| 168 Cold Stone Creamery | 531-8200 |
| 138 Cupcake A La Mode ◉ | 960-1911 |
| 49 IT'SUGAR ✕ | 759-8666 |
| 107 Made in KC Marketplace ◉ | 718-0806 |
| 102 Messenger – 47th Street ◉ | 326-8644 |
| 31 Messenger – Jefferson ◉ | 437-8445 |
| 113 Starbucks | 753-4246 |
| 112 Topsy's Popcorn Shoppe ◉ | 753-7373 |

FINANCIAL INSTITUTIONS

| | |
|---|----------|
| 47 Bank of America (ATM) | 714-7010 |
| 61a Country Club Bank (ATM) & Drive-thru | 931-4060 |
| 124 Sterling Bank (ATM) ✕ | 627-6600 |

LOCAL

| | |
|--|--------------|
| 144 3DHQ ◉ ✕ | 913-204-1234 |
| 27 Bambou Salons ◉ | 561-1302 |
| 88 Beauty Brands ◉ | 239-3249 |
| 24 The Better Cheddar ◉ | 753-8822 |
| 154 Bruu Café ◉ ✕ | 561-8204 |
| 53a Charlie Hustle ◉ ✕ | 541-4387 |
| 111 Classic Cup Café ◉ ✕ | 753-1840 |
| 138 Cupcake A La Mode ◉ | 960-1911 |
| 149 Cupcakin Bakery ◉ ✕ | 813-4880 |
| 85 Diebel's Sportsmens Gallery ◉ | 931-2988 |
| 109 EB & Co. ◉ | 214-6223 |
| 174 Fiorella's Jack Stack Barbecue ◉ | 531-7427 |
| 35 Gram & Dun ◉ ✕ | 389-2900 |
| 36 The Granfalloon Restaurant & Bar ◉ ✕ | 753-7850 |
| 55 Hallmark Gold Crown ◉ | 931-4555 |
| 63 Kindred Shops ◉ | 492-7287 |
| 139 Larissa's Tailor Shop ◉ ✕ | 753-1209 |
| 107 Made in KC Marketplace ◉ | 718-0806 |
| 115 Matches Boutique ◉ ✕ | 255-3159 |
| 102 Messenger – 47th Street ◉ | 326-8644 |
| 31 Messenger – Jefferson ◉ | 437-8445 |
| 26 Milan Optique ◉ ✕ | 569-2700 |
| 56a Mojo Cycling Studio ◉ ✕ | 561-1995 |
| 151 Nickel & Suede ◉ | 499-8811 |
| 22 O'Dowd's Gastrobar ◉ ✕ | 561-2700 |

| | |
|---|--------------|
| 134 Plaza Hair Design ◉ ✕ | 753-2936 |
| 133 Plaza Nails ◉ ✕ | 701-6616 |
| 143 Rally House – East ◉ | 384-0581 |
| 91 Rally House – West ◉ | 756-5409 |
| 131 Renner's Boots, Shoes & Repair ◉ ✕ | 561-0740 |
| 148 RE: Emporium ◉ | 913-274-8321 |
| 128 Ricca Sposa Bridal ◉ ✕ | 913-709-4615 |
| 165 Rye ◉ | 541-3382 |
| 141 Salon Sophia ◉ ✕ | 756-0024 |
| 20 Terrasi Living & Scandia Home ◉ ✕ | 753-4144 |
| 23 Three Dog Bakery ◉ | 753-3647 |
| 150 TIVOL ◉ | 531-5800 |
| 56 T-Mobile | 521-6300 |
| 112 Topsy's Popcorn Shoppe ◉ | 753-7373 |
| 32 Vinca Fine Jewelry ◉ ✕ | 531-5591 |
| 30 Zócalo Mexican Cuisine ◉ ✕ | 756-5555 |

HOTELS

| | |
|--|----------|
| 177 The Fontaine Hotel ✕ | 913-8800 |
| 95 The InterContinental Hotel ✕ | 756-1500 |
| 97 Residence Inn by Marriott | 753-0033 |
| 2 Sheraton Suites | 931-4400 |

COURTYARDS

| | |
|------------------|-------------------|
| 1 Penguin | 4 Neptune |
| 2 Mermaid | 5 Chandler |
| 3 Pomona | 6 Valencia |

PARKING

| | |
|--------------------------------|---------------------------------|
| 1 Seville Garage | 10 Plaza Central Garage |
| 2 Valencia Place Garage | 11 Plaza 211 West Garage |
| 3 Granada Garage | 12 Plaza 211 East Garage |
| 4 Time Garage | 13 Mill Creek Garage |
| 5 Balcony Garage | 14 Giralda Garage |

MISCELLANEOUS

| |
|---|
| 15 Brush Street Handicapped Access |
| ◉ Kansas City Original |
| ✕ Exclusive to the Plaza |

All area codes are (816) unless noted otherwise.



SKELLY BUILDING ON THE COUNTRY CLUB PLAZA

Kansas City's High End Retail, Restaurant, Hotel, Office,
and Entertainment District - World Famous Since 1922

| 605 W. 47th Street Kansas City, MO 64112 | 1 mi radius | 3 mi radius | 5 mi radius | 10 mi radius |
|---|----------------|----------------|----------------|-----------------|
| Population | | | | |
| 2022 Estimated Population | 19,987 | 117,434 | 272,556 | 765,083 |
| 2027 Projected Population | 20,226 | 119,885 | 278,388 | 781,018 |
| 2020 Census Population | 20,003 | 117,426 | 269,929 | 760,180 |
| 2010 Census Population | 18,289 | 111,166 | 256,458 | 730,964 |
| Projected Annual Growth 2022 to 2027 | 0.2% | 0.4% | 0.4% | 0.4% |
| Historical Annual Growth 2010 to 2022 | 0.8% | 0.5% | 0.5% | 0.4% |
| 2022 Median Age | 35.6 | 36.6 | 36.1 | 37.8 |
| Households | | | | |
| 2022 Estimated Households | 11,734 | 55,253 | 123,298 | 329,003 |
| 2027 Projected Households | 11,754 | 56,057 | 125,327 | 336,081 |
| 2020 Census Households | 11,670 | 54,984 | 122,466 | 325,858 |
| 2010 Census Households | 10,739 | 51,710 | 113,780 | 308,346 |
| Projected Annual Growth 2022 to 2027 | - | 0.3% | 0.3% | 0.4% |
| Historical Annual Growth 2010 to 2022 | 0.8% | 0.6% | 0.7% | 0.6% |
| Race and Ethnicity | | | | |
| 2022 Estimated White | 78.3% | 62.5% | 57.3% | 60.5% |
| 2022 Estimated Black or African American | 8.6% | 23.6% | 26.3% | 21.7% |
| 2022 Estimated Asian or Pacific Islander | 6.2% | 4.0% | 3.1% | 3.6% |
| 2022 Estimated American Indian or Native Alaskan | 0.3% | 0.4% | 0.5% | 0.5% |
| 2022 Estimated Other Races | 6.6% | 9.6% | 12.9% | 13.7% |
| 2022 Estimated Hispanic | 6.9% | 10.0% | 14.3% | 14.9% |
| Income | | | | |
| 2022 Estimated Average Household Income | \$100,651 | \$102,298 | \$86,246 | \$83,449 |
| 2022 Estimated Median Household Income | \$71,503 | \$70,461 | \$65,599 | \$65,856 |
| 2022 Estimated Per Capita Income | \$59,396 | \$48,357 | \$39,261 | \$36,055 |
| Education (Age 25+) | | | | |
| 2022 Estimated Elementary (Grade Level 0 to 8) | 1.6% | 2.6% | 3.9% | 4.1% |
| 2022 Estimated Some High School (Grade Level 9 to 11) | 2.7% | 4.5% | 5.6% | 5.7% |
| 2022 Estimated High School Graduate | 9.3% | 19.0% | 22.0% | 24.4% |
| 2022 Estimated Some College | 12.2% | 16.3% | 18.0% | 20.3% |
| 2022 Estimated Associates Degree Only | 4.4% | 5.1% | 5.8% | 7.2% |
| 2022 Estimated Bachelors Degree Only | 37.9% | 29.7% | 26.2% | 23.6% |
| 2022 Estimated Graduate Degree | 32.0% | 22.8% | 18.5% | 14.7% |
| Business | | | | |
| 2022 Estimated Total Businesses | 2,089 | 6,347 | 14,418 | 34,605 |
| 2022 Estimated Total Employees | 61,260 | 124,867 | 249,314 | 568,029 |
| 2022 Estimated Employee Population per Business | 29.3 | 19.7 | 17.3 | 16.4 |
| 2022 Estimated Residential Population per Business | 9.6 | 18.5 | 18.9 | 22.1 |

©2023, Sites USA, Chandler, Arizona, 480-491-1112 Demographic Source: Applied Geographic Solutions 11/2022, TIGER Geography - RS1





SKELLY BUILDING ON THE COUNTRY CLUB PLAZA

Kansas City's High End Retail, Restaurant, Hotel, Office,
and Entertainment District - World Famous Since 1922

RS1

| 605 W. 47th Street | | 5 mi radius | 10 mi radius | 15 mi radius |
|-----------------------|---|-------------|--------------|--------------|
| Kansas City, MO 64112 | | | | |
| POPULATION | 2020 Estimated Population | 273,539 | 758,942 | 1,339,339 |
| | 2025 Projected Population | 288,401 | 789,412 | 1,389,395 |
| | 2010 Census Population | 256,888 | 731,100 | 1,261,842 |
| | 2000 Census Population | 278,377 | 764,295 | 1,206,735 |
| | Projected Annual Growth 2020 to 2025 | 1.1% | 0.8% | 0.7% |
| | Historical Annual Growth 2000 to 2020 | - | - | 0.5% |
| | 2020 Median Age | 36.0 | 37.6 | 37.8 |
| HOUSEHOLDS | 2020 Estimated Households | 125,688 | 328,449 | 559,063 |
| | 2025 Projected Households | 133,351 | 344,924 | 584,159 |
| | 2010 Census Households | 113,953 | 308,463 | 516,607 |
| | 2000 Census Households | 120,207 | 320,205 | 490,638 |
| | Projected Annual Growth 2020 to 2025 | 1.2% | 1.0% | 0.9% |
| | Historical Annual Growth 2000 to 2020 | 0.2% | 0.1% | 0.7% |
| RACE AND ETHNICITY | 2020 Estimated White | 54.1% | 61.5% | 69.1% |
| | 2020 Estimated Black or African American | 32.4% | 23.7% | 17.7% |
| | 2020 Estimated Asian or Pacific Islander | 3.1% | 3.8% | 4.3% |
| | 2020 Estimated American Indian or Native Alaskan | 0.6% | 0.6% | 0.5% |
| | 2020 Estimated Other Races | 9.9% | 10.5% | 8.4% |
| | 2020 Estimated Hispanic | 14.1% | 14.8% | 11.5% |
| INCOME | 2020 Estimated Average Household Income | \$84,826 | \$82,218 | \$92,766 |
| | 2020 Estimated Median Household Income | \$65,174 | \$64,156 | \$74,416 |
| | 2020 Estimated Per Capita Income | \$39,181 | \$35,712 | \$38,817 |
| EDUCATION (AGE 25+) | 2020 Estimated Elementary (Grade Level 0 to 8) | 4.0% | 4.2% | 3.2% |
| | 2020 Estimated Some High School (Grade Level 9 to 11) | 6.9% | 6.5% | 5.1% |
| | 2020 Estimated High School Graduate | 22.8% | 25.6% | 24.1% |
| | 2020 Estimated Some College | 18.6% | 20.8% | 20.5% |
| | 2020 Estimated Associates Degree Only | 6.0% | 7.1% | 7.5% |
| | 2020 Estimated Bachelors Degree Only | 24.9% | 22.3% | 24.6% |
| | 2020 Estimated Graduate Degree | 16.9% | 13.6% | 15.0% |
| BUSINESS | 2020 Estimated Total Businesses | 14,102 | 34,021 | 52,512 |
| | 2020 Estimated Total Employees | 220,386 | 533,405 | 779,805 |
| | 2020 Estimated Employee Population per Business | 15.6 | 15.7 | 14.8 |
| | 2020 Estimated Residential Population per Business | 19.4 | 22.3 | 25.5 |

