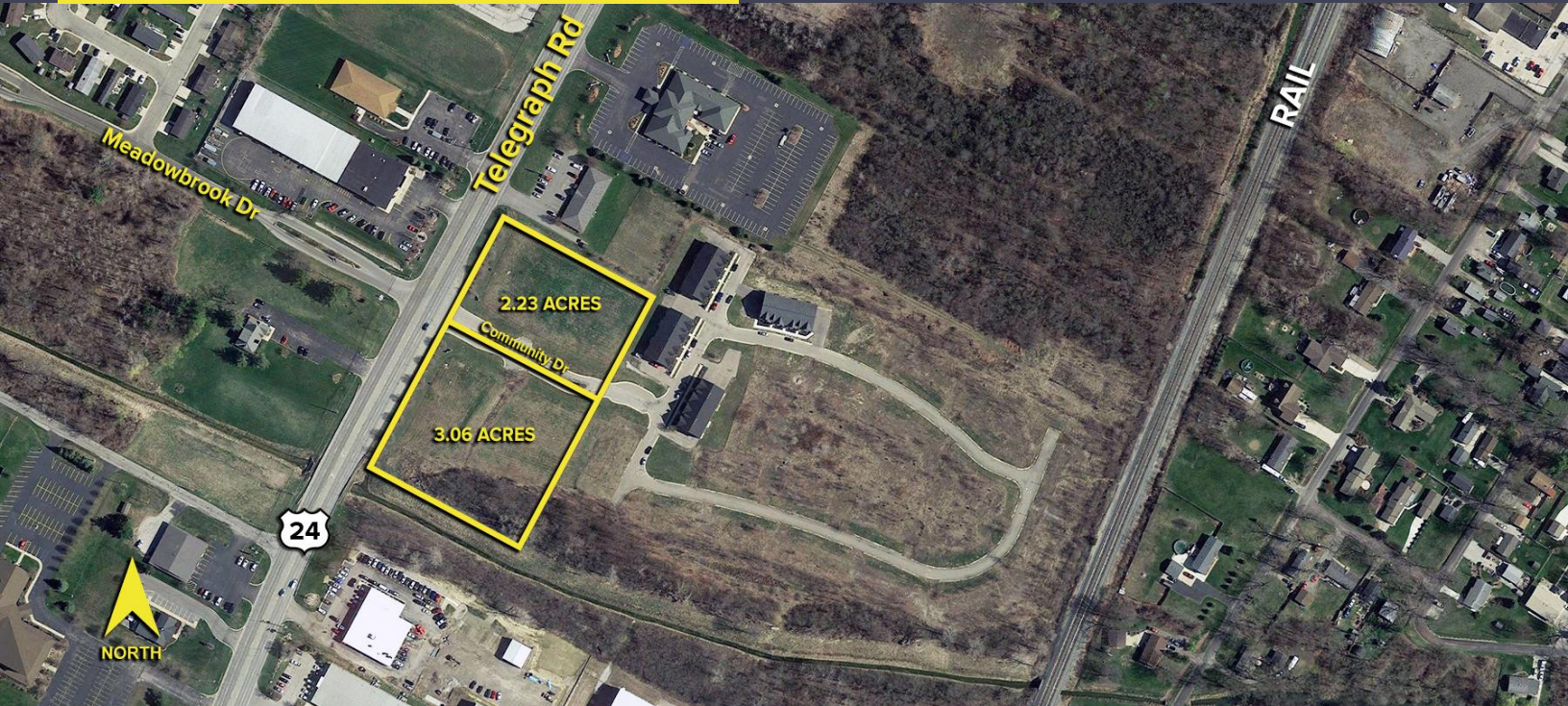


S. TELEGRAPH MONROE, MICHIGAN

LAND FOR SALE/LEASE
2.23-5.29 Acres Available



**SIGNATURE
ASSOCIATES**
KNOW SIGNATURE | KNOW RESULTS



PROPERTY FEATURES

- 2.23-5.29 Acres Available
- Build-to-suit
- Mixed Use Zoning
- All infrastructure in place
- 16 new condos recently built and sold, and 8 more set to go in spring
- 40 units currently existing and occupied, 72 more units planned
- Parcels may be purchased separately or together
- Excellent site for fast food, drive-thru, retail, office, and many other uses
- Sale price: \$125,000/acre



For more information, please contact:

JUSTIN GAFFREY
(248) 799 3143
jgaffrey@signatureassociates.com

ROB KELEGHAN
(419) 249 6323
rkeleghan@signatureassociates.com

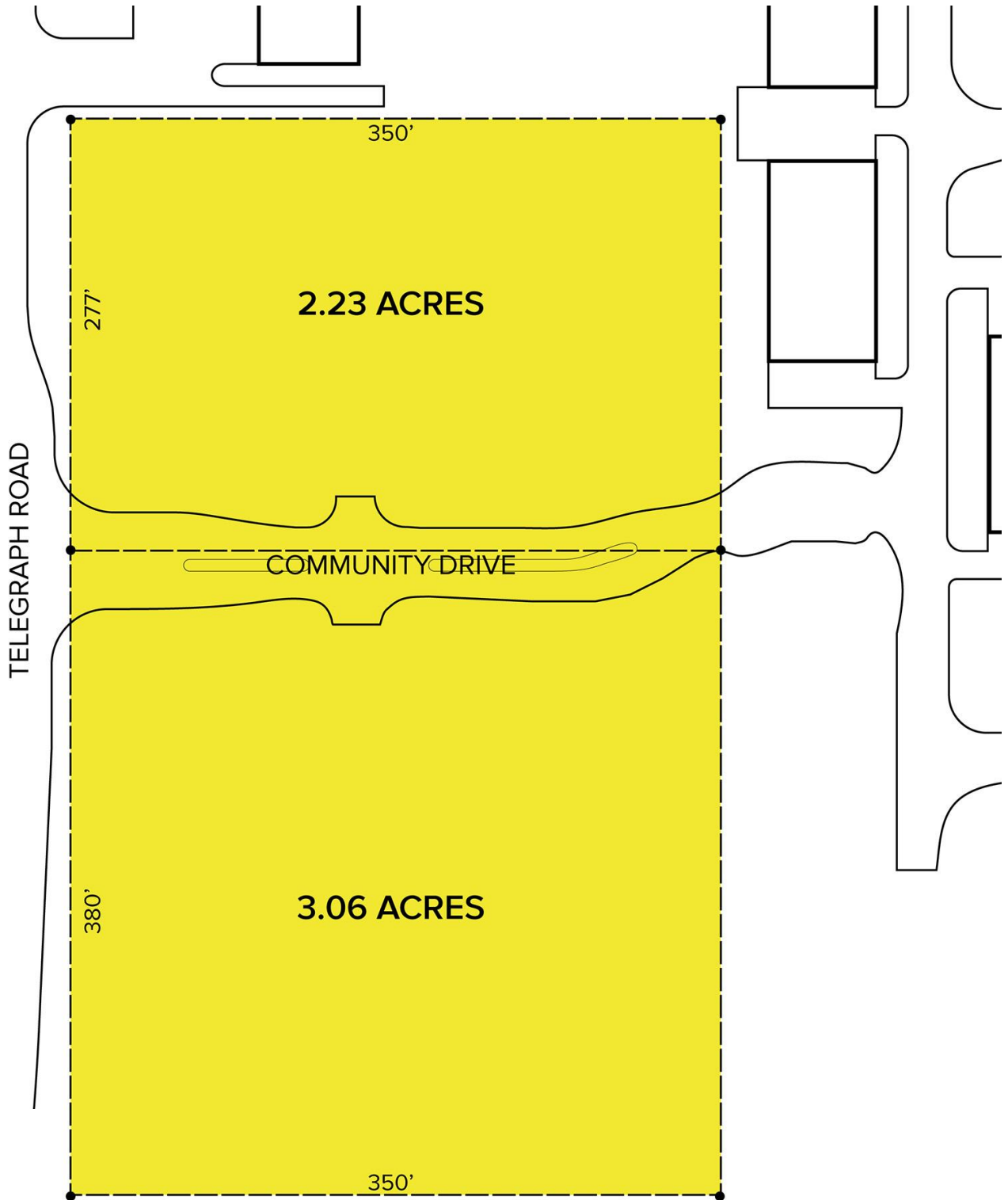
SIGNATURE ASSOCIATES
One Towne Square, Suite 1200
Southfield, MI 48076
www.signatureassociates.com

S. Telegraph Road – Monroe Twp, Michigan

Land For Sale/Lease

2.23-5.29
Acres
AVAILABLE

Site Plan



For more information, please contact:

JUSTIN GAFFREY
(248) 799 3143
jgaffrey@signatureassociates.com

ROB KELEGHAN
(419) 249 6323
rkeleghan@signatureassociates.com

SIGNATURE ASSOCIATES
One Towne Square, Suite 1200
Southfield, MI 48076
www.signatureassociates.com

S. Telegraph Road – Monroe Twp, Michigan

Land For Sale/Lease

2.23-5.29
Acres
AVAILABLE

Labeled Aerial



For more information, please contact:

JUSTIN GAFFREY
(248) 799 3143
jgaffrey@signatureassociates.com

ROB KELEGHAN
(419) 249 6323
rkeleghan@signatureassociates.com

SIGNATURE ASSOCIATES
One Towne Square, Suite 1200
Southfield, MI 48076
www.signatureassociates.com