



## Anthony Bernabe

(407) 634-2813 | [abernabe@equity.net](mailto:abernabe@equity.net)

## Jordan Characo

(407) 634-4428 | [jcharaco@equity.net](mailto:jcharaco@equity.net)

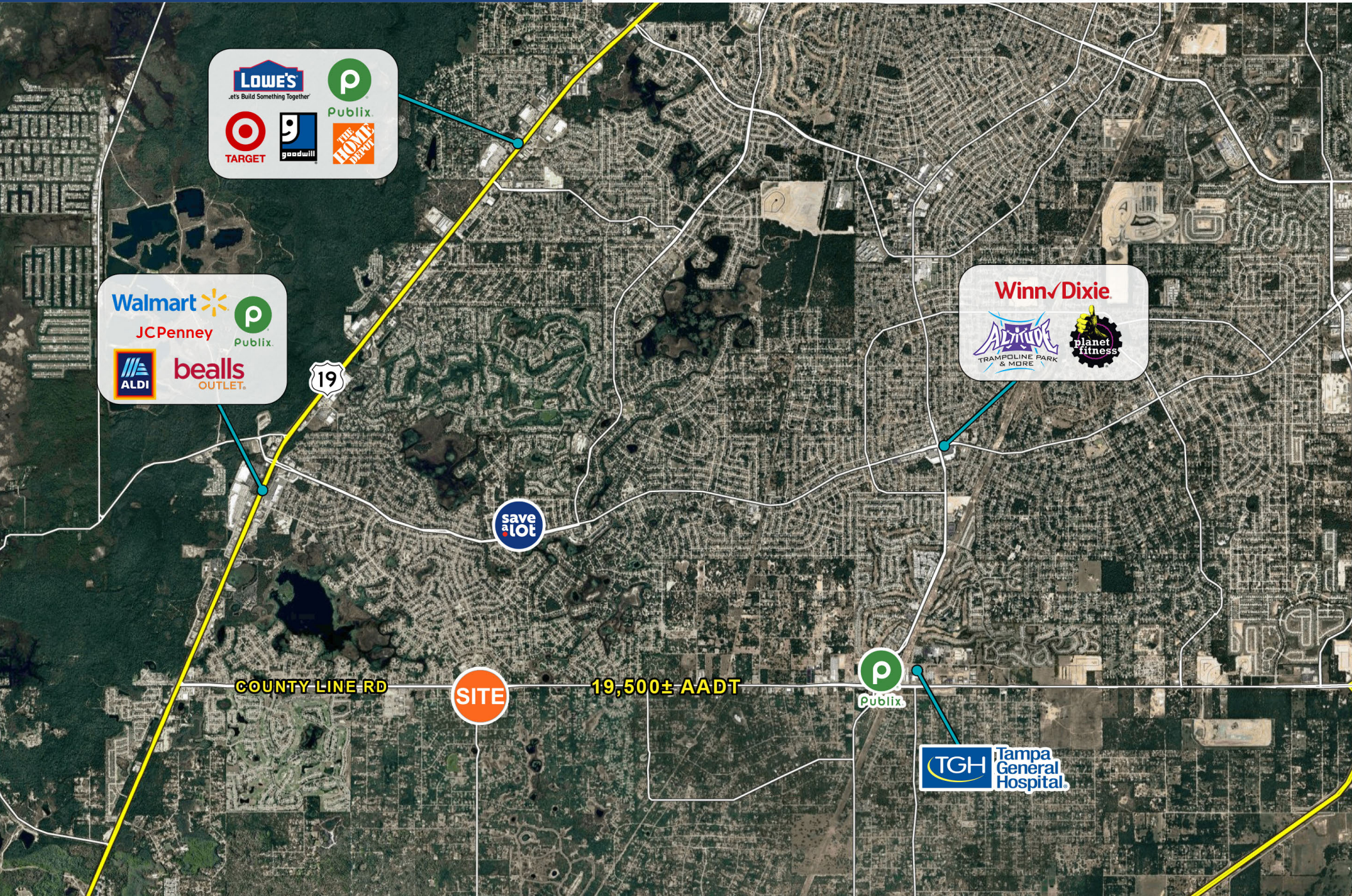
## Logan Frame

(860) 803-9855 | [lframe@equity.net](mailto:lframe@equity.net)

- ✓ 1,440 to 4,320 SF is available for lease.
- ✓ Strategically located along the Hernando-Pasco county border, offering access to over 82,000 residents within a 5-mile surrounding radius.
- ✓ Spaces are delivered in cold dark shell condition, providing a unique opportunity to fully customize the interior to specific needs and vision.
- ✓ Abundant parking with a total of 45 parking spaces.

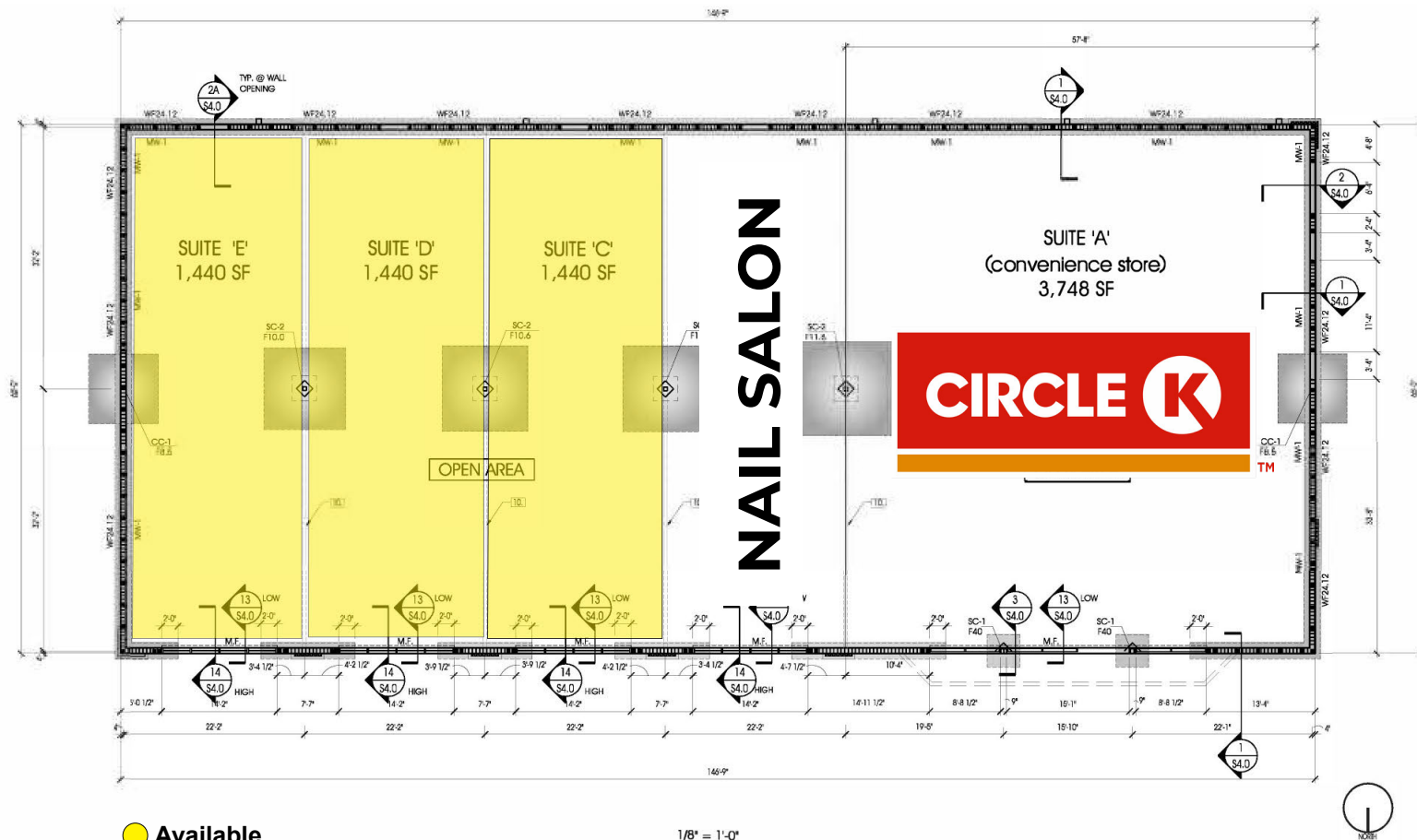


# LOCATION AERIAL





# LEASING OPPORTUNITIES





# TRADE AREA OVERVIEW



## DEMOGRAPHICS

2024

RADIUS:

1 MILE

3 MILES

5 MILES

### RESIDENTIAL POPULATION



5,154

36,676

82,430

### DAYTIME POPULATION



3,260

31,241

71,572

### AVERAGE HOUSEHOLD INCOME



\$84,246

\$74,295

\$78,170

### NUMBER OF HOUSEHOLDS



2,153

16,201

35,354

### MEDIAN AGE



48.7

55.2

53.1

**31%**  
MIDLIFE  
CONSTANTS



Midlife Constants are near or at retirement, with low labor force participation and modest net worth. They live in small towns outside cities, lead a country-style life, and are modestly generous.

Median Age | 47  
Median HH Income: | \$53,200

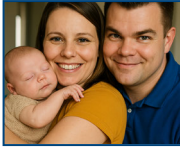
**16%**  
THE ELDERS



With a median age of 72.3, Elders are Tapestry's oldest segment. They prefer senior-focused communities in warm climates, own varied housing, and are informed, independent, and active despite the market's small size.

Median Age | 72  
Median HH Income: | \$42,800

**16%**  
TRADITIONAL  
LIVING



This younger market includes married couples and singles, often multigenerational families, working in manufacturing, retail, or health care, balancing new responsibilities with a continued interest in style and fun.

Median Age | 35  
Median HH Income: | \$39,300



# Contact Us

**Anthony Bernabe**

(407) 634-2813 | [abernabe@equity.net](mailto:abernabe@equity.net)

**Jordan Characo**

(407) 634-4428 | [jcharaco@equity.net](mailto:jcharaco@equity.net)

**Logan Frame**

(860) 803-9855 | [lframe@equity.net](mailto:lframe@equity.net)

