

7520 STATE ROAD

PHILADELPHIA, PA 19136



AVAILABLE FOR LEASE

**EXCLUSIVELY
REPRESENTED BY
THE FLYNN COMPANY**

MICHAEL GALLAGHER
MGALLAGHER@FLYNNCO.COM
215-561-6565 X 151

PATRICK GILMORE, SIOR
PGILMORE@FLYNNCO.COM
215-561-6565 X 122

BRENDAN FLYNN
BFLYNN@FLYNNCO.COM
215-561-6565 X 152



PROPERTY DETAILS:



Available: 55,000 SF office / flex / industrial space (divisible to approximately 13k SF)



Currently built out as a combination of high-end medical office and flex/industrial space



Situated on 3.05 acres with ample parking



Well-capitalized landlord committed to funding deals



Tremendous location immediately off I-95 Cottman Avenue exit



14' foot clear ceiling heights

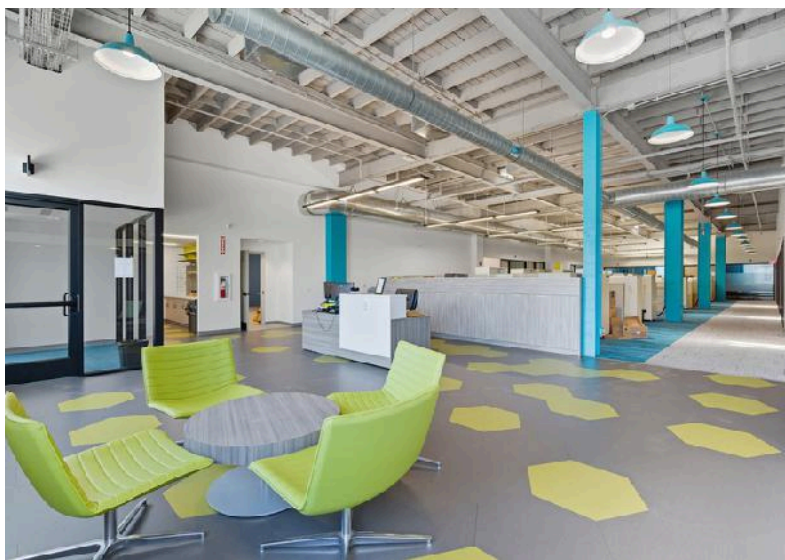


Zoned I2 Medium-Industrial

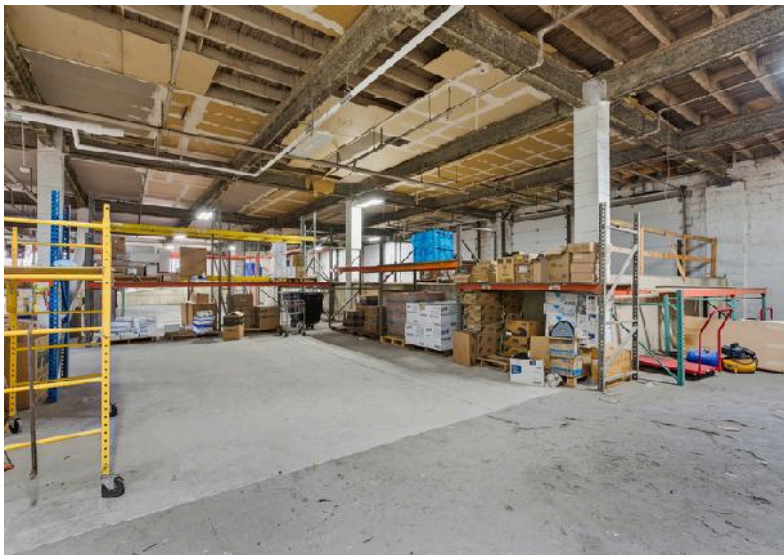
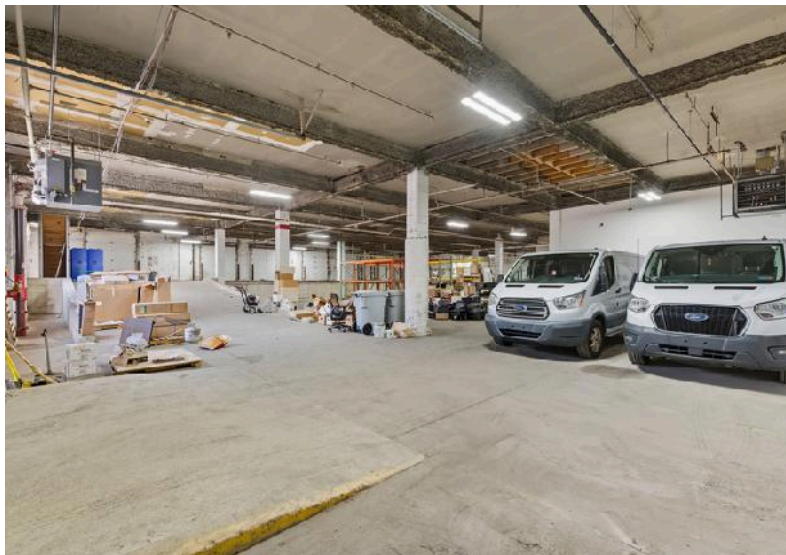
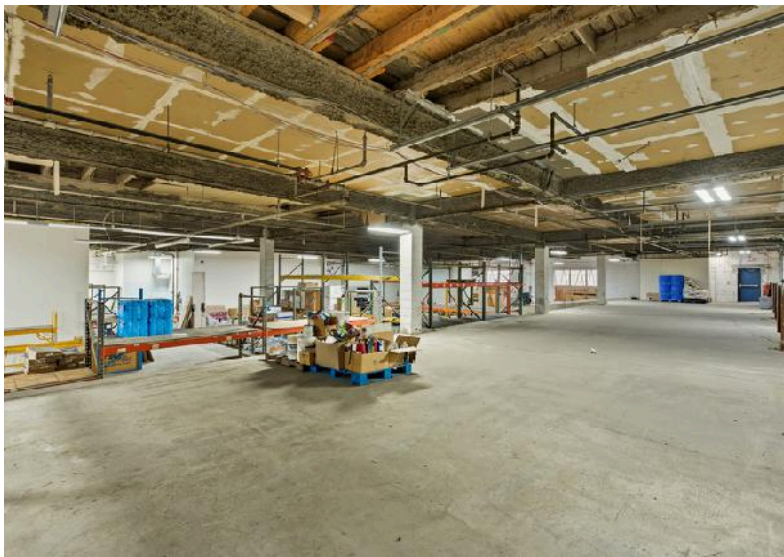
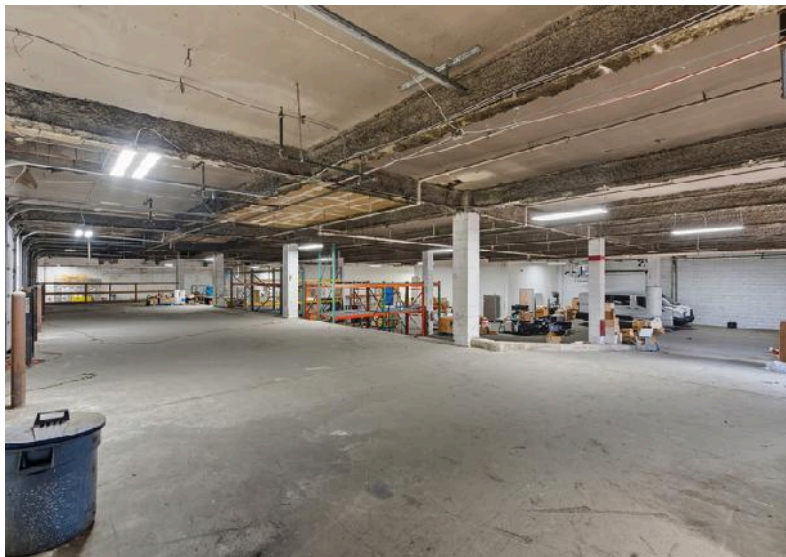
THE FLYNN COMPANY

WWW.FLYNNCO.COM | 1621 WOOD STREET, PHILADELPHIA, PA 19103 | 215.561.6565

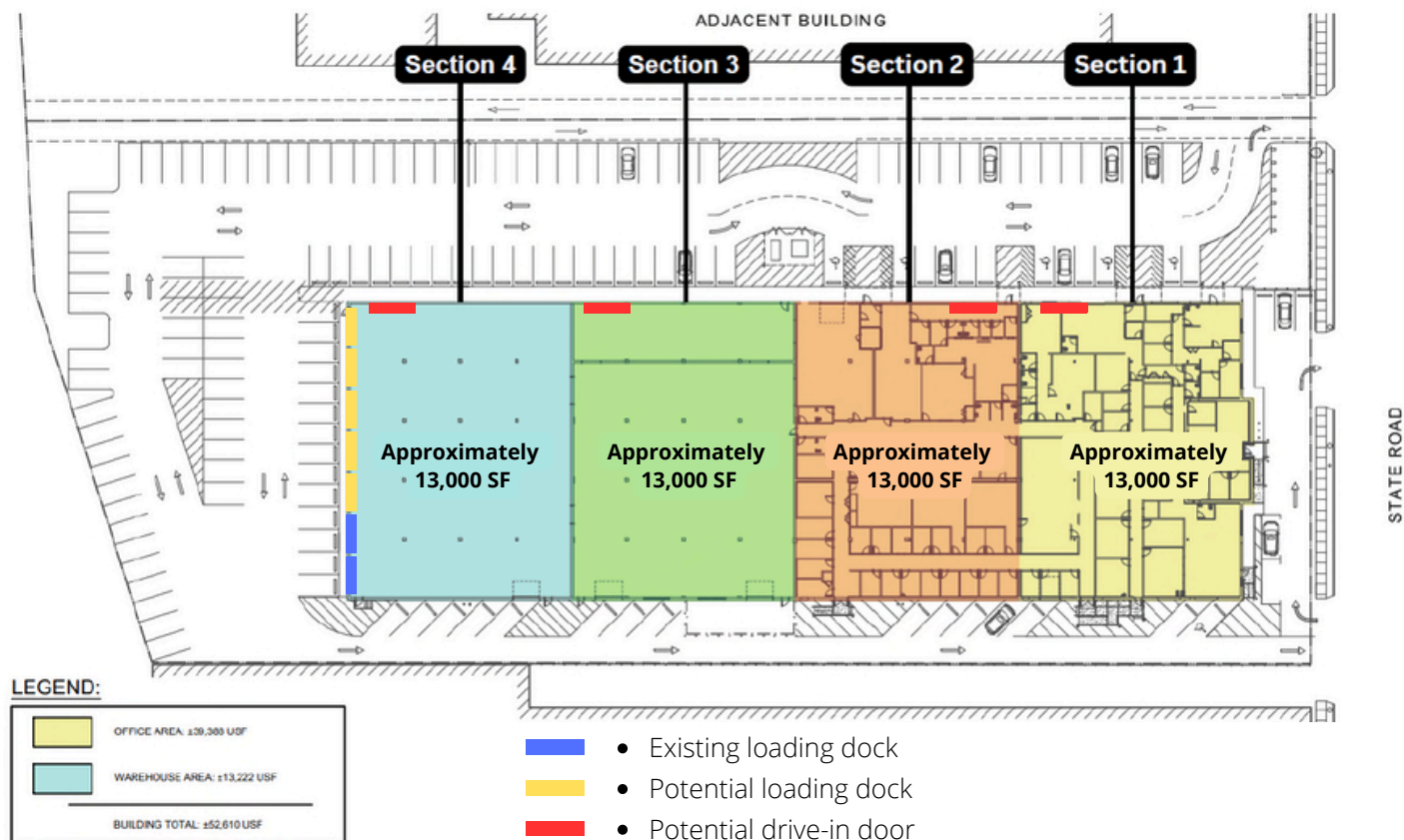
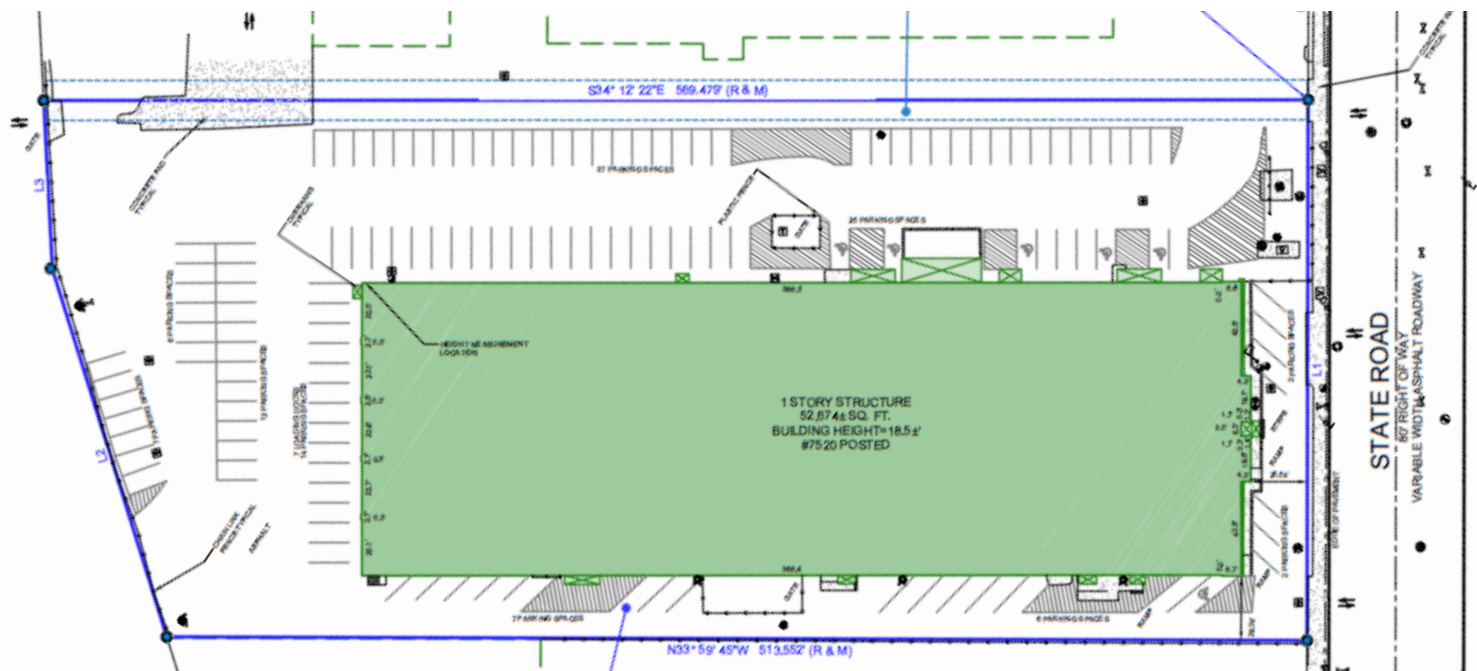
PROPERTY PHOTOS



PROPERTY PHOTOS



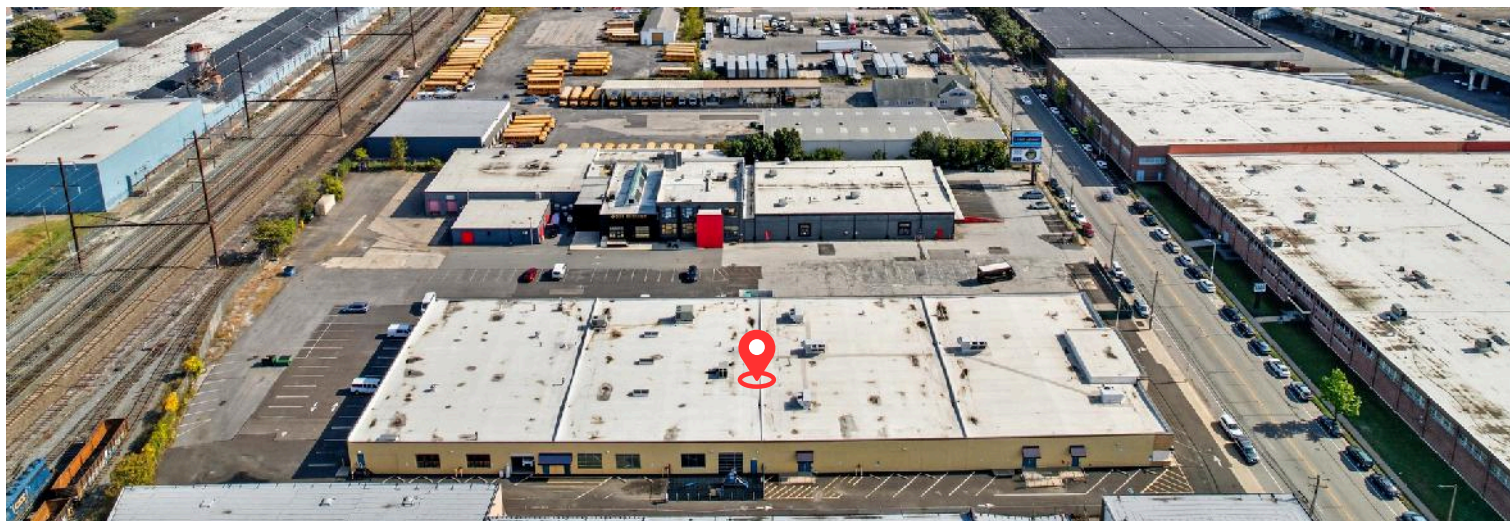
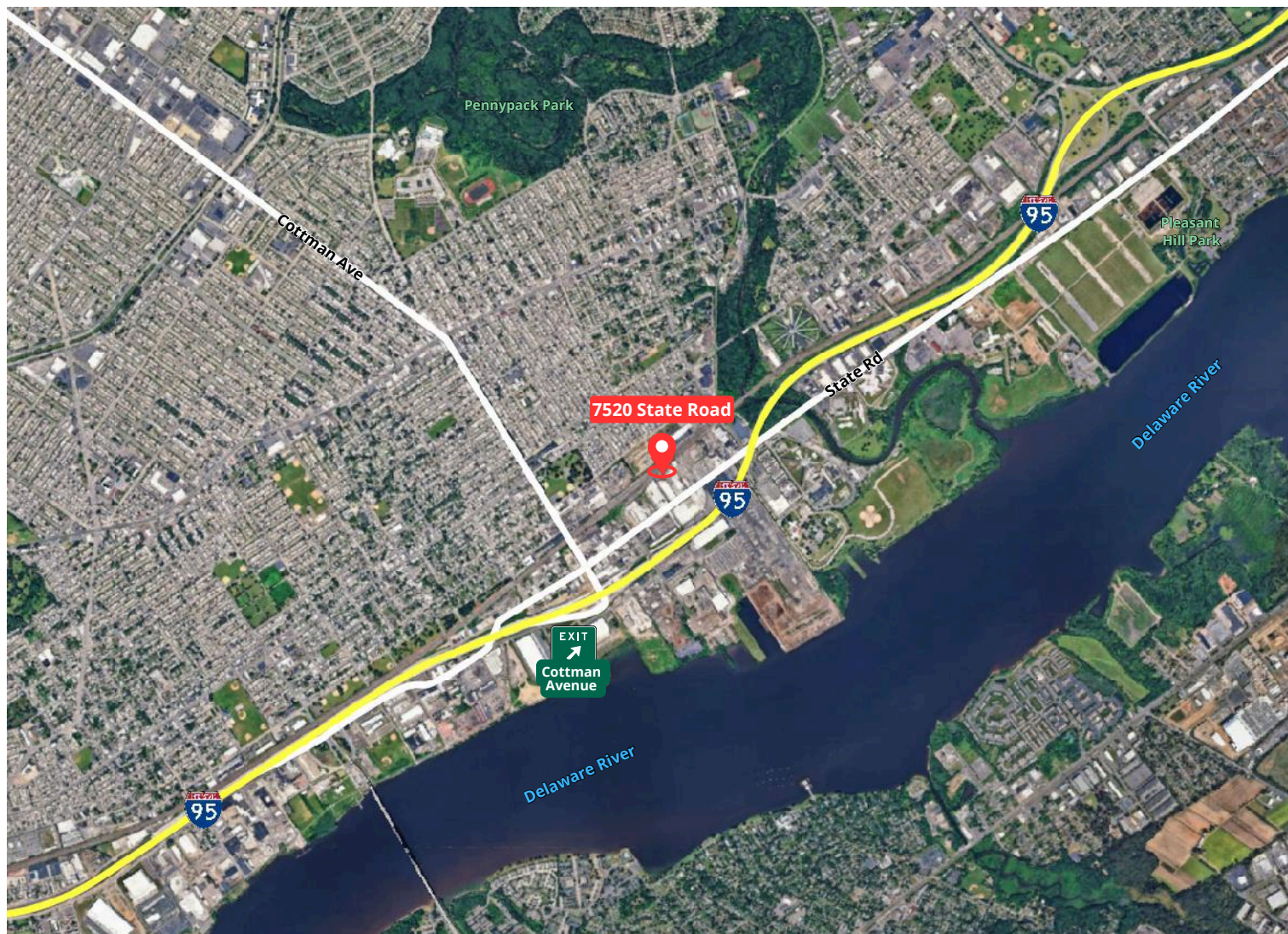
SURVEY + FLOOR PLAN

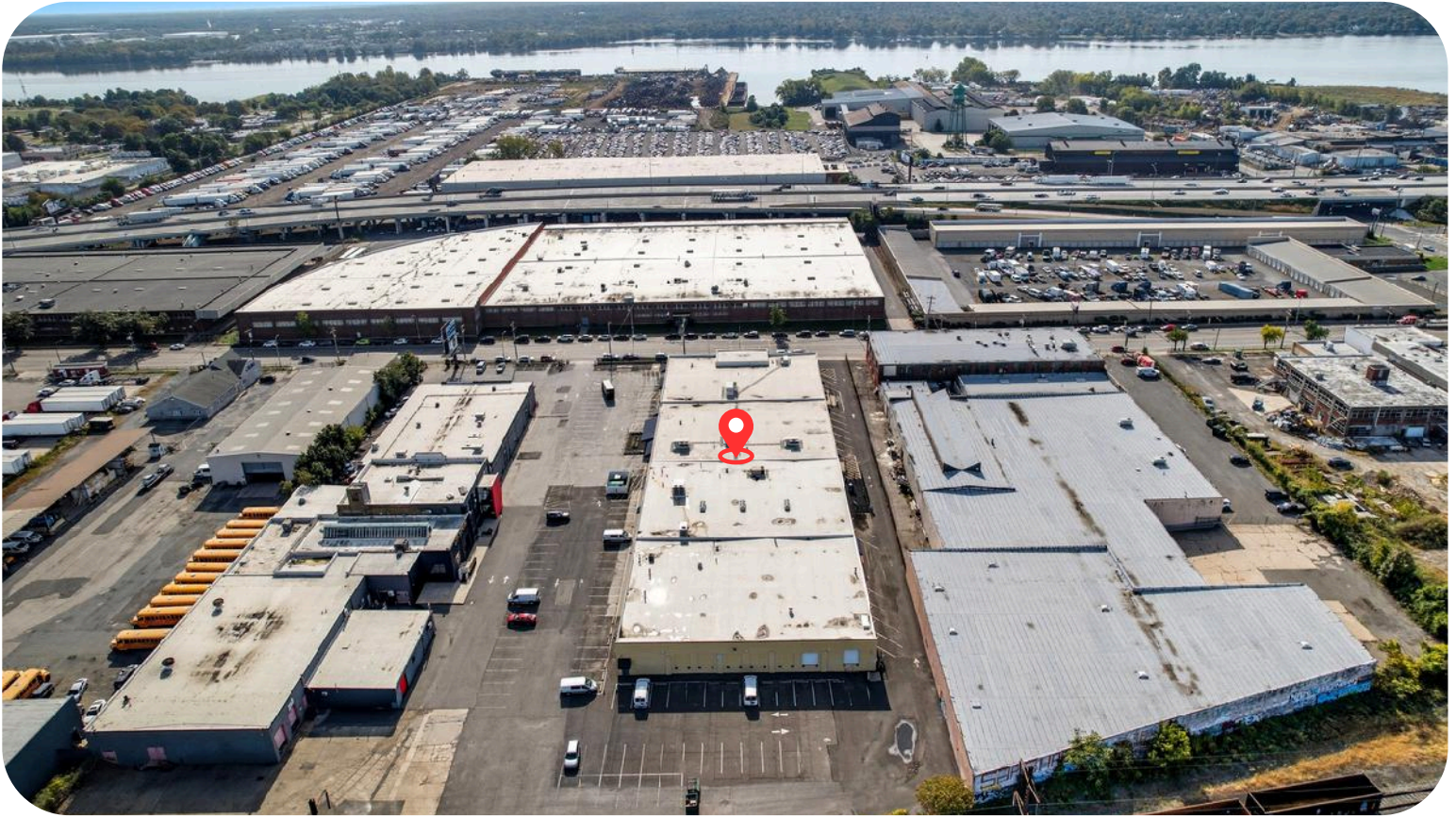


FLOOR PLANS



LOCATION





CONTACT INFORMATION

MICHAEL GALLAGHER

MGALLAGHER@FLYNNCO.COM

215-561-6565 X 151

PATRICK GILMORE. SIOR

PGILMORE@FLYNNCO.COM

215-561-6565 X 122

BRENDAN FLYNN

BFLYNN@FLYNNCO.COM

215-561-6565 X 152

THE FLYNN COMPANY

SALES & LEASING | PROPERTY MANAGEMENT | CONSTRUCTION SERVICES | PROPERTY MAINTENANCE

WWW.FLYNNCO.COM | 1621 WOOD STREET, PHILADELPHIA, PA 19103 | 215.561.6565

All information furnished regarding property for lease is from sources deemed reliable, but no warranty or representation is made as to the accuracy thereof, and same is subject to errors, omissions, change of price, prior lease, financing, withdrawal without notice or other conditions.