

Are you receiving the best cross-border, intermodal experience between the U.S. and Mexico?

Union Pacific customers are.

Union Pacific offers unmatched market access and transit times connecting major North American markets via rail. We provide the capacity, the service and the expertise to get intermodal shipments safely — and quickly — across the border.

Intermodal Expertise



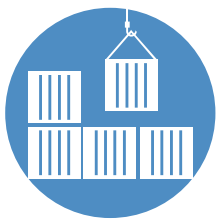
- Union Pacific **moves more product** between the U.S. and Mexico than all of our rail competitors combined
- Union Pacific has operations personnel at **every major public intermodal terminal** in Mexico
- Our **relationships with key customs personnel** simplify the customs process
- Union Pacific customers get **bilingual support** from a team with decades of experience

Premier Service



- Union Pacific is the only rail provider **with inbound and outbound rail service** at both Laredo and El Paso
- We offer the **most direct route** between Mexico and Chicago and Mexico and the West Coast
- Union Pacific's Mexico Direct service is offered **six days per week** vs. our closest competitor's five days per week
- Published transit schedules are at least **12 hours faster** than our nearest competitor in most lanes

Superior Capacity



- Union Pacific has access to the **largest dedicated container fleet** with more than 80,000 rail containers between Union Pacific and our partners
- We have exported more than **3,000 UP-owned chassis** to Mexico since 2014
- We've **invested more than \$1.6B** in intermodal facilities over the past 15 years
- Our Mutual Commitment Program provides shippers with **year-round capacity, stable pricing and surge allowances**

Reach more Mexico markets — and reach them faster — when you ship with Union Pacific. Contact your Union Pacific representative to get started on your intermodal solution.

Unmatched Intermodal Service Across the Border

If **service** is at the top of your list, Union Pacific delivers.

- Union Pacific has **equivalent or better transit time** and service frequency in ALL lanes of significance between Mexico and the U.S.
- If your shipments are headed to Los Angeles from interior Mexico origins, you can expect them to arrive **at least one day faster** using Union Pacific.
- And if you're wondering where your shipments are, you can **track them 24/7**.

Union Pacific vs. Rail Competition*

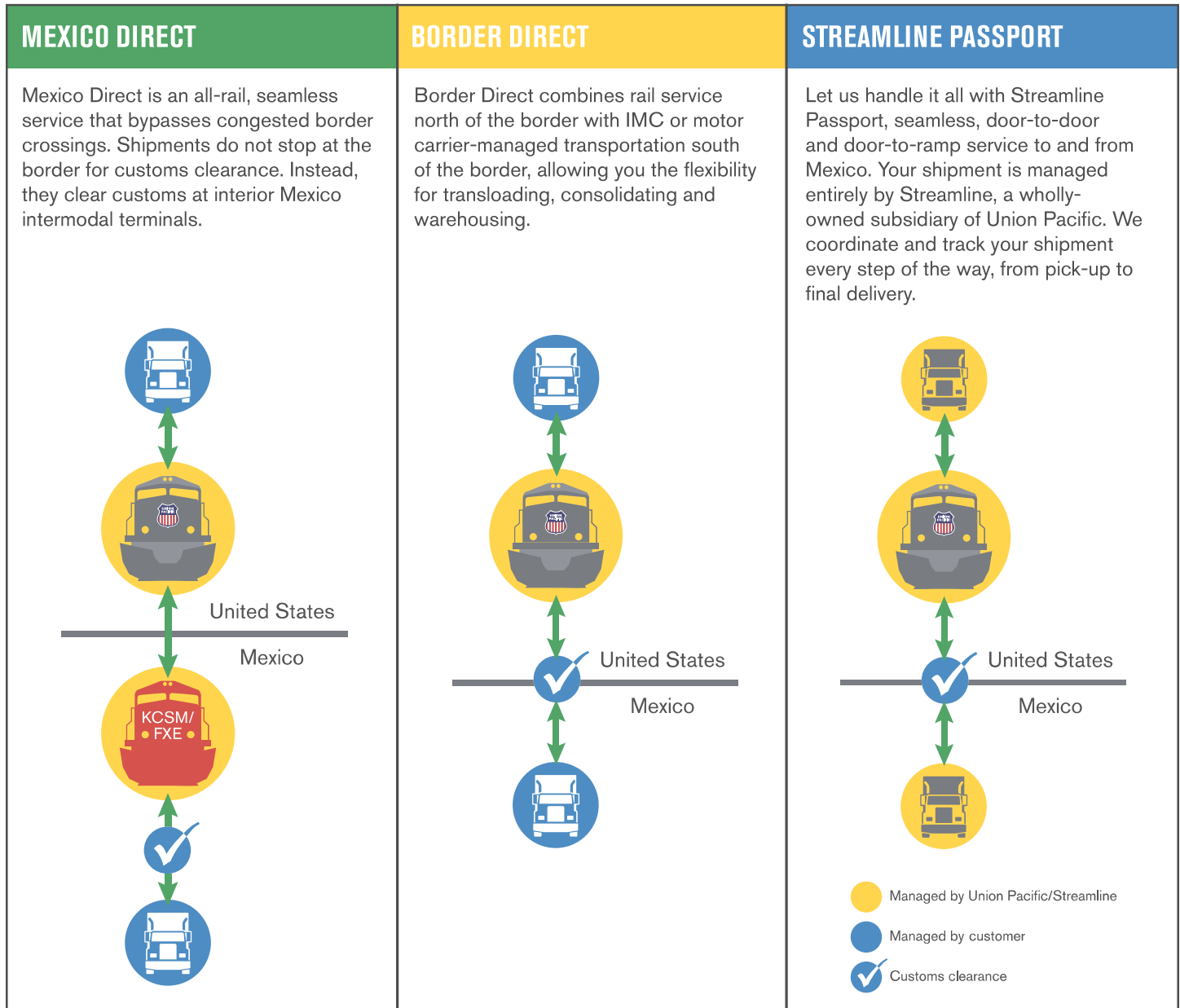
Lane	Transit Time	Service Frequency
Mexico to Chicago	=	+
Chicago to Mexico	+	+
Port Laredo to Chicago	+	+
Chicago to Port Laredo	+	+
Port Laredo to Memphis	+	+
Memphis to Port Laredo	+	+
El Paso to Chicago	+	+
Chicago to El Paso	+	=
Mexico to Los Angeles	+	+
Port Laredo to Los Angeles	+	+

- + Union Pacific is better by 12 hours or 1 day
- = Union Pacific is equal to the nearest rail competitor

* Comparison based on published standard service schedules



Three Ways In and Out of Mexico



Mexico Direct

Mexico Direct routes include:

- Chicago to/from Silao, Monterrey, San Luis Potosi, Toluca and Mexico City
- Memphis to/from Silao
- Los Angeles from Monterrey, San Luis Potosi, Mexico City and Toluca
- Monterrey to Seattle
- Interline service to/from Canada and the eastern U.S. via Chicago

Border Direct

Border Direct routes include:

- Chicago to/from Port Laredo and El Paso
- Los Angeles to/from Port Laredo and El Paso
- Memphis to/from Port Laredo
- Houston and Lathrop to El Paso
- Interline service to/from Canada and the eastern U.S.

Streamline Passport

Streamline Passport routes include:

- Northbound and Southbound service
 - Midwest (Chicago)
 - West Coast (LA, POR, SEA)
 - Northeast
 - Canada
- Northbound service to the Southeast

Learn More. Contact your Union Pacific representative to get started on your intermodal solution.

Border Direct

Rail Service North of the Border, Truck Service South of the Border

Keep your options open with Union Pacific's Border Direct service. We combine rail shipments north of the border with IMC- or motor carrier-managed transportation south of the border, which provides flexibility in transloading, consolidating and warehousing.

Border Direct offers ramp-to-ramp service through El Paso and Port Laredo for easy access to and from Mexico.

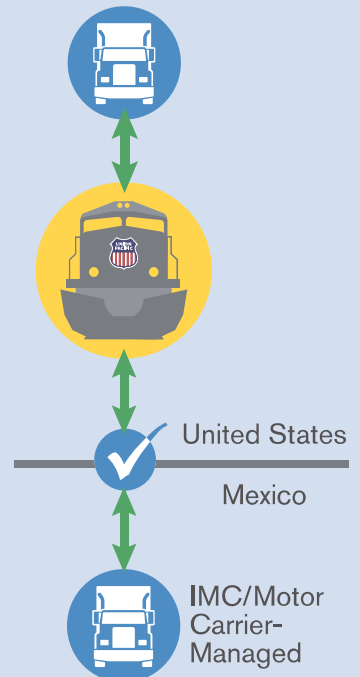


Reach More Major Mexico Markets

Border Direct routes include:

- Chicago to/from Port Laredo and El Paso
- Los Angeles to/from Port Laredo and El Paso
- Memphis to/from Port Laredo
- Houston and Lathrop to El Paso
- Interline service to Canada and the eastern U.S.

How Border Direct Works



- Managed by Union Pacific/Streamline
- Managed by customer
- ✓ Customs clearance

Why Choose Mexico Direct?

- **Rely on 24/7 access to a dedicated, experienced team** of bilingual professionals at our International Service Center (ICSC) in San Antonio, Texas.
- **Ship when you need to ship.** We ensure you always have capacity available with access to EMP and UMAX equipment, the largest dedicated fleets of rail-provided containers.
- **Stick to your schedule** with consistent and predictable services through truck-competitive reliability.
- **Ship with peace of mind.** We provide complete visibility to your shipments with newly developed, web-based interline trace and reporting tools.
- **Extensive service options** connecting our nation's cities, businesses and supply chains to rapidly growing Mexican markets.

Contact your Sales Manager for additional information.

August 2016



Mexico Direct

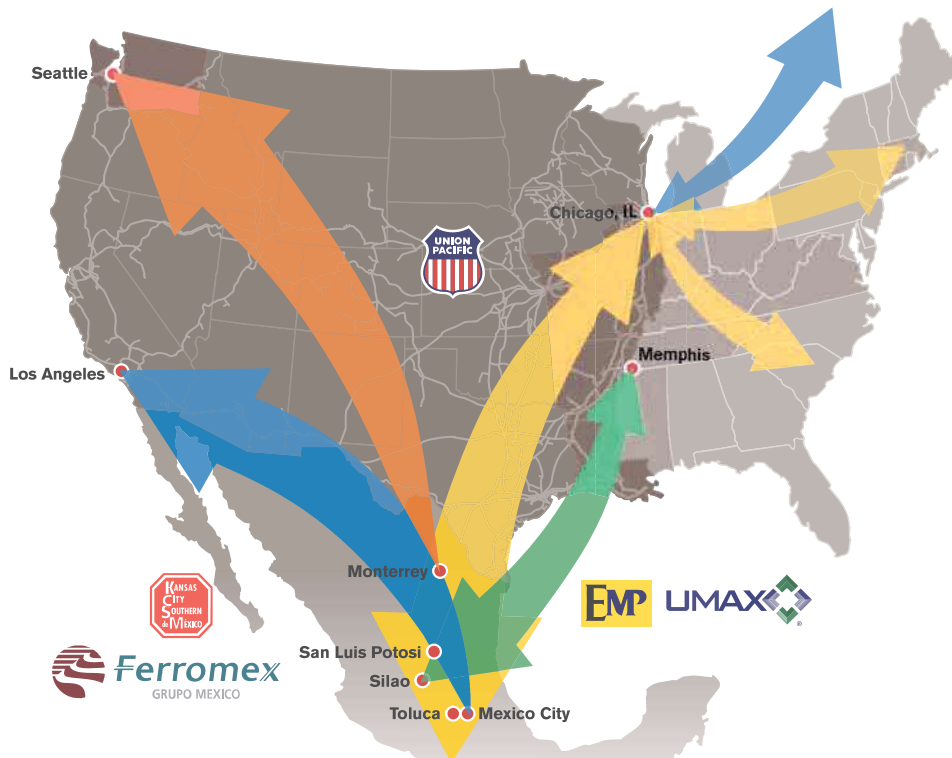
All-Rail, Seamless Service that Bypasses Congested Border Crossings

Let Union Pacific take the guesswork out of doing business across the border. If you are looking for a solution for shipping in and out of Mexico that removes confusion from the customs process, Union Pacific's Mexico Direct service is the answer.

Mexico Direct is an all-rail, seamless service that bypasses congested border crossings. Southbound shipments do not stop at the border for customs clearance. Instead, they travel in-bond, clearing customs at interior Mexico origins and destinations.

Mexico Direct offers a through-rate structure that provides you with the convenience of a single price and a single bill for ramp-to-ramp and door-to-door shipments to and from Mexico.

Our dedicated team of experts works closely with both Mexican rail carriers, Ferromex (FXE) and Kansas City Southern Mexico (KCSM), creating a virtually seamless network to make doing business in Mexico efficient and easy.

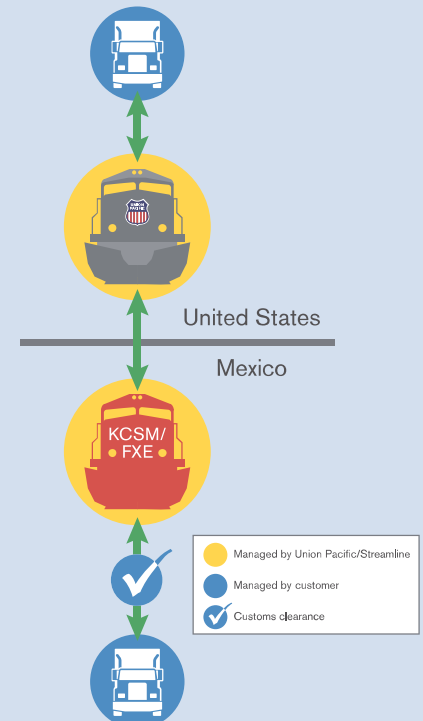


Reach More Major Mexico Markets

Mexico Direct routes include:

- Chicago to/from Silao, Monterrey, San Luis Potosi, Toluca and Mexico City
- Memphis to/from Silao
- Los Angeles from Monterrey, San Luis Potosi, Mexico City and Toluca
- Monterrey to Seattle
- Interline service to/from Canada and the eastern U.S. via Chicago

How Mexico Direct Works



Why Choose Mexico Direct?

- **Save time and money** with the ability to bypass congested border crossings.
- **Remove confusion from the customs process.** Our established relationships with U.S. freight forwarders, Mexican and U.S. Customs brokers make the process seamless.
- **Ship when you need to ship.** We ensure you always have capacity available with access to EMP and UMAX equipment, the largest dedicated fleets of rail-provided containers.
- **Rely on 24/7 access to a dedicated, experienced team** of bilingual professionals at our International Service Center (ICSC) in San Antonio, Texas.
- **Stick to your schedule** with consistent and predictable services through truck-competitive reliability.
- **Ship with peace of mind.** We provide complete visibility to your shipments with newly developed, web-based interline trace and reporting tools.
- **Extensive service options** connecting our nation's cities, businesses and supply chains to rapidly growing Mexican markets.

Contact your Sales Manager for additional information.

February 2017

Union Pacific Mexico Intermodal Solutions

Union Pacific offers seamless service to and from Mexico, moving more products across the border than all of our competitors combined. Our dedicated team has the expertise to help you make doing business in Mexico efficient and easy.

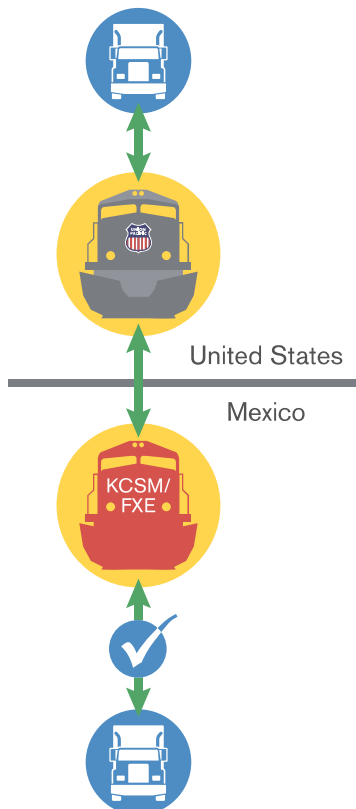
- **Save time and money** with the ability to bypass congested border crossings.
- **Remove confusion of the customs process.** Our established relationships with U.S. freight forwarders, Mexican and U.S. Customs brokers make the process seamless.
- **Rely on 24/7 access to a dedicated, experienced team** of bilingual professionals at our International Service Center (ICSC) in San Antonio, Texas.
- **Stick to your schedule** with consistent and predictable services through truck-competitive reliability.
- **Ship when you need to ship.** We ensure you always have capacity available with access to EMP and UMAX equipment, the largest dedicated fleets of rail-provided containers.
- **Ship with peace of mind.** We provide complete visibility to your shipments with newly developed, web-based interline trace and reporting tools.
- **Extensive service options** connecting our nation's cities, businesses and supply chains to rapidly growing Mexican markets.

Our team of experts will help you select the best shipping option to meet your needs:

Mexico Direct

Rail service north and south of the border

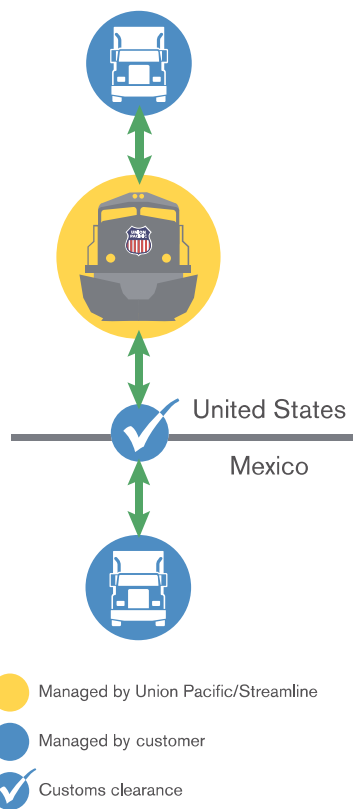
Mexico Direct is an all-rail, seamless service that bypasses congested border crossings. Southbound shipments do not stop at the border for customs clearance. Instead, they travel in-bond, clearing customs at interior Mexico origins and destinations.



Border Direct

Rail service north of the border, truck service south of the border

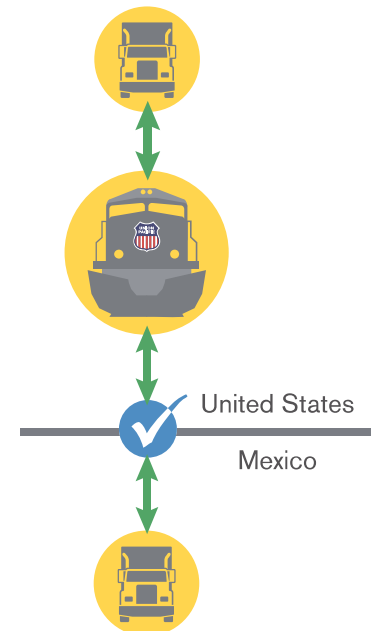
Border Direct combines rail service north of the border with IMC or motor carrier-managed transportation south of the border, allowing you the flexibility for transloading, consolidating and warehousing.



Streamline Passport

Door-to-door shipments managed entirely by Streamline

Let us handle it all with Streamline Passport, seamless, door-to-door and door-to-ramp service to and from Mexico. Your shipment is managed entirely by Streamline, a wholly-owned subsidiary of Union Pacific. We coordinate and track your shipment every step of the way, from pick-up to final delivery.



- Managed by Union Pacific/Streamline
- Managed by customer
- ✓ Customs clearance

Contact your Sales Manager for additional information.

August 2016