



2601 Patriot Boulevard

Glenview, Illinois 60026

One Oakbrook Terrace
Suite 400
Oakbrook Terrace, Illinois 60181
+1 630 932 1234

hiffman.com

PROPERTY HIGHLIGHTS

48,991 SF Two-story Class A Office Building. Glenview is a prime North Shore address with approximately 47,000 residents and 290 acres of parks and recreation. Top notch schools, executive housing and some of the Suburb's best shopping, restaurants, and entertainment.



NORTH SHORE
CLASS A LOCATION



WALKABLE
OUTDOOR
AMENITIES



+197 PARKING
STALLS (4/1,000
SURFACE PARKING)



0.5 MILES TO METRA
MD-M LINE GLENVIEW
STATION

Contact

Jason Wurtz
+1 630 693 0692
jwurtz@hiffman.com

Bennett Baker
+1 630 317 0751
bbaker@hiffman.com



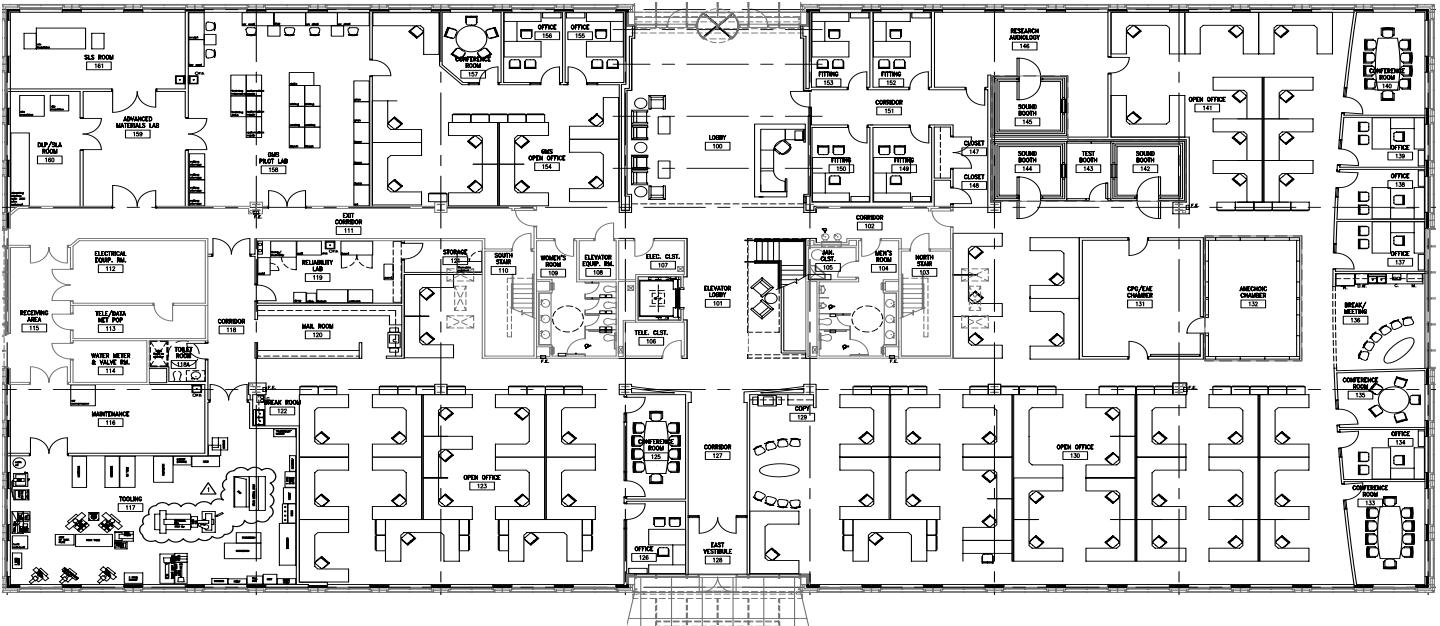
TECH/LAB ROOMS &
EXISTING SPECIALIZED
EQUIPMENT



2-FLOORS
CONSISTING OF
+24,495 RSF

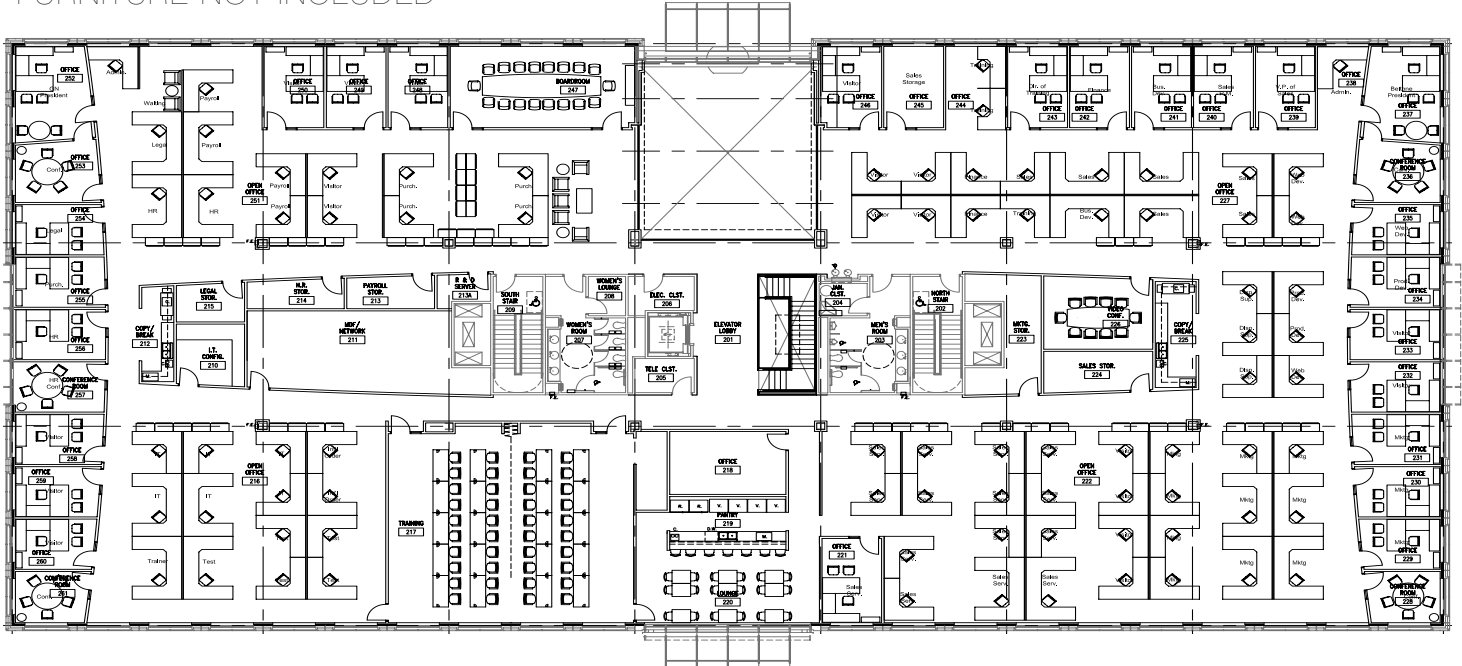
FIRST FLOOR - 24,495 SF

*FURNITURE NOT INCLUDED



SECOND FLOOR - 24,495 SF

*FURNITURE NOT INCLUDED



- ±38 Private Offices
- ±11 Conference rooms (5-10 Seats)
- 1 Board Room (18 Seats)
- 1 Coffee Bar/Lounge Area
- 4 Large Break Rooms/Lounges
- 40-60 Person Training Room
- Tech/Lab Rooms
- Shipping/Receiving Area



2601 PATRIOT BOULEVARD GLENVIEW | FOR LEASE

LOCATION, LOCATION, LOCATION

Immediate walkable access to the best amenities in the area, including over 60 retail and restaurant options and outdoor amenities

- Walkable (0.5 miles) to Metra MD-M Line Glenview Station
- Pace Bus Stop located in front of property on Patriot Boulevard
- Walkable to **Kent Fuller Prairie Reserve** (32 acre nature preserve located directly behind 2601 Patriot) & **Gallery Park** (140 acre park, biking/walking paths and pond)
- 2.5 miles to I-294 & Willow Road 4-way interchange
- 3 miles to I-94 & Willow Road 4-way interchange
- Over 60 retail & restaurant options within walking distance

THE KENT FULLER AIR STATION PRAIRIE



GALLERY PARK



Contact

Jason Wurtz
+1 630 693 0692
jwurtz@hiffman.com

Bennett Baker
+1 630 317 0751
bbaker@hiffman.com

NAI Hiffman
Commercial Real Estate Services, Worldwide

HIFFMAN
NATIONAL

One Oakbrook Terrace
Suite 400
Oakbrook Terrace, Illinois 60181
+1 630 932 1234

hiffman.com