



CUSHMAN &
WAKEFIELD

CRESCO
Real Estate

Beta Drive

767 Beta

777 Beta

771 Beta

781 Beta

Wilson Mills Road

Medical Office Space for Lease

BETA OFFICE CAMPUS AVAILABILITY

767/771/777/781 Beta Drive, Mayfield Village, Ohio 44143



BETA OFFICE CAMPUS

- On-site maintenance available for immediate assistance
- High-speed broadband connectivity for seamless operations
- Conveniently located near shopping, dining, and major freeways (I-271 and I-90)
- Ideal for medical use, with 8,200 SF space suitable for a surgery center or other medical facilities*
- Willingness to collaborate with the municipality to secure additional signage for enhanced visibility
- Single-story layout provides easy accessibility

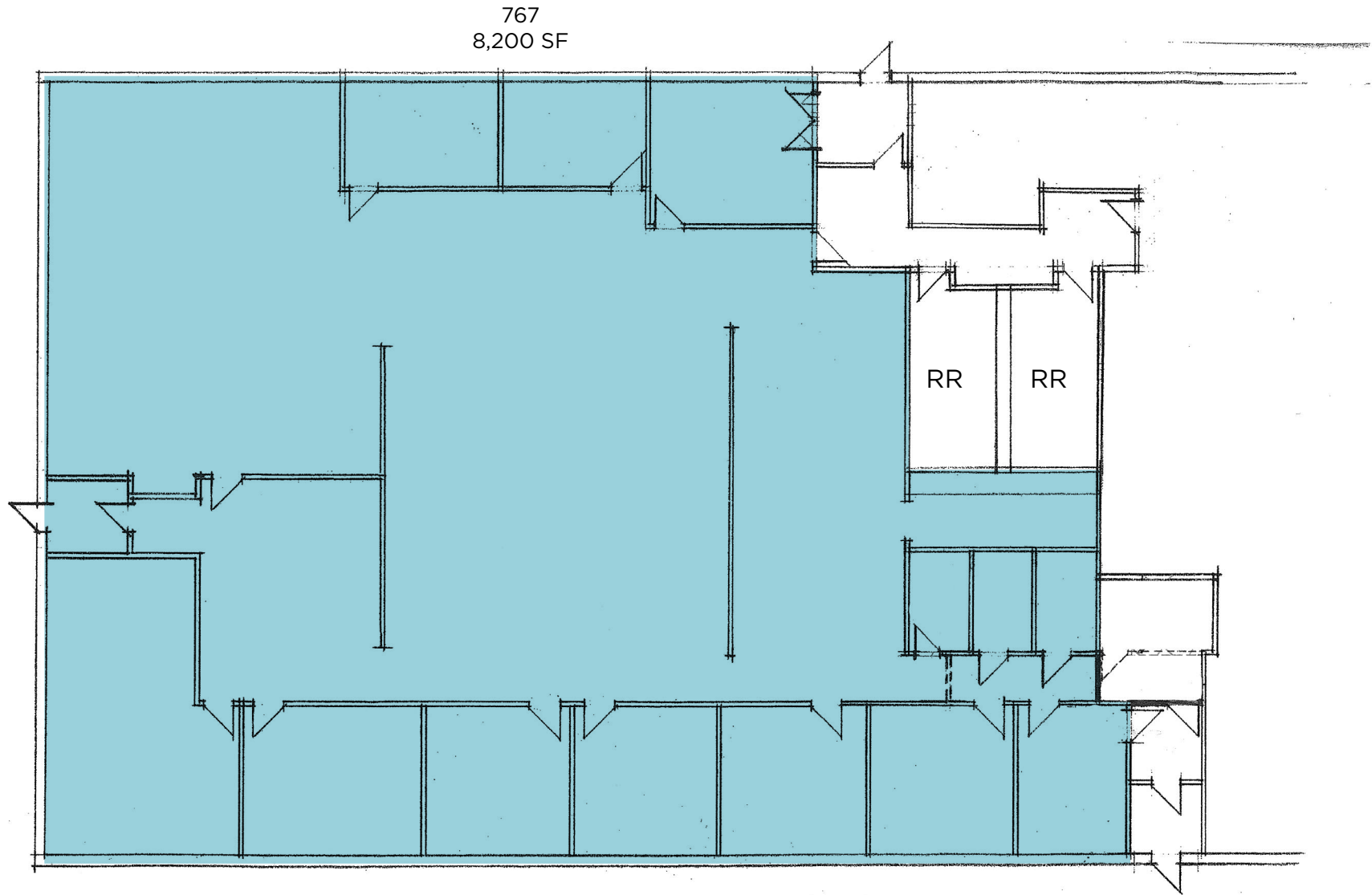


AVAILABLE SPACE

Unit	Office SF	Contiguous	Lease Rate
767	8,200 SF	8,200 SF	\$16.00/SF MG
781-N 7/31/2026	2,010 SF	2,010 SF	\$16.00/SF MG

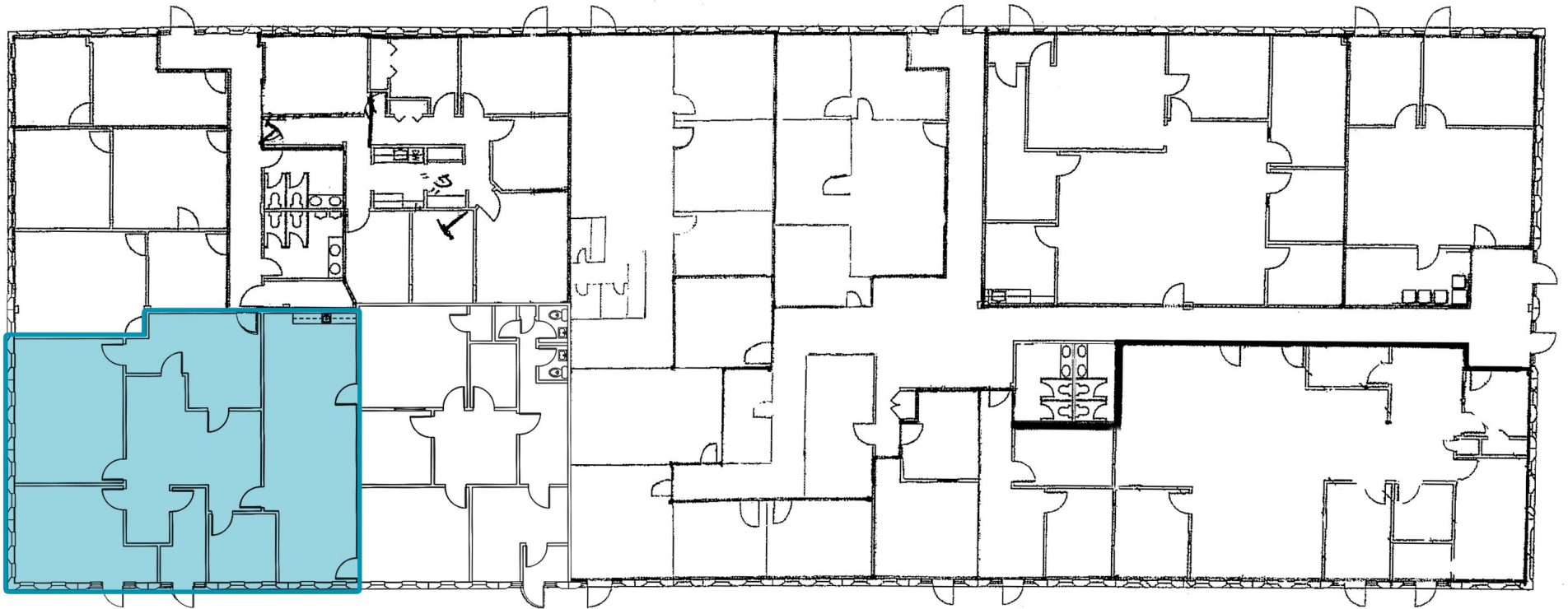
**Municipality is reviewing zoning to include medical use in the standard definition of "professional office"*

BETA OFFICE CAMPUS



767 BETA DRIVE, MAYFIELD VILLAGE, OHIO

BETA OFFICE CAMPUS



Suite N
2,010 SF
Available 7/31/26

781 BETA DRIVE, MAYFIELD VILLAGE, OHIO



Eric M. Schreibman, J.D.
Vice President
eschreibman@crescorealestate.com
+1 216 525 1471

Nanci V. Ferrante, MCR
Senior Vice President
nferrante@crescorealestate.com
+1 216 525 1496

Alexander L. Russo, SIOR
Senior Vice President
arusso@crescorealestate.com
+1 216 525 1495

6100 Rockside Woods Blvd, Suite 200, Cleveland, Ohio 44131

Main +1 216 520 1200

crescorealestate.com

Independently Owned and Operated / A Member of the Cushman & Wakefield Alliance

Cushman & Wakefield Copyright 2025. No warranty or representation, express or implied, is made to the accuracy or completeness of the information contained herein, and same is submitted subject to errors, omissions, change of price, rental or other conditions, withdrawal without notice, and to any special listing conditions imposed by the property owner(s). As applicable, we make no representation as to the condition of the property (or properties) in question. A licensee at Cushman & Wakefield | CRESCO may have an interest in the client entity offering this property for sale.