

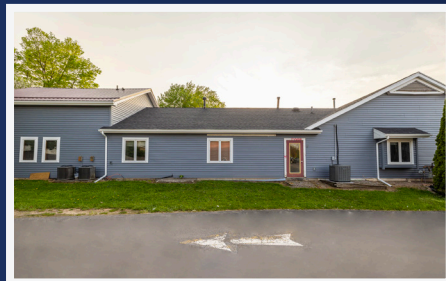


# 628 E Main St

Palmyra, NY 14522

Space Available: 7,614 SF

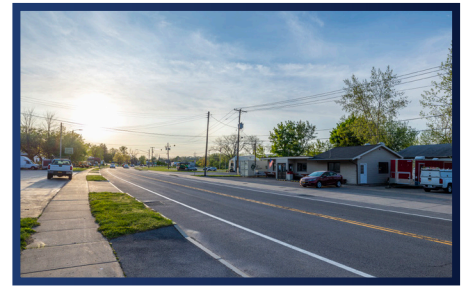
- » Ideal for Office Space
- » Building Class C
- » 25 Parking Spaces
- » Located near Walgreens and Dollar General



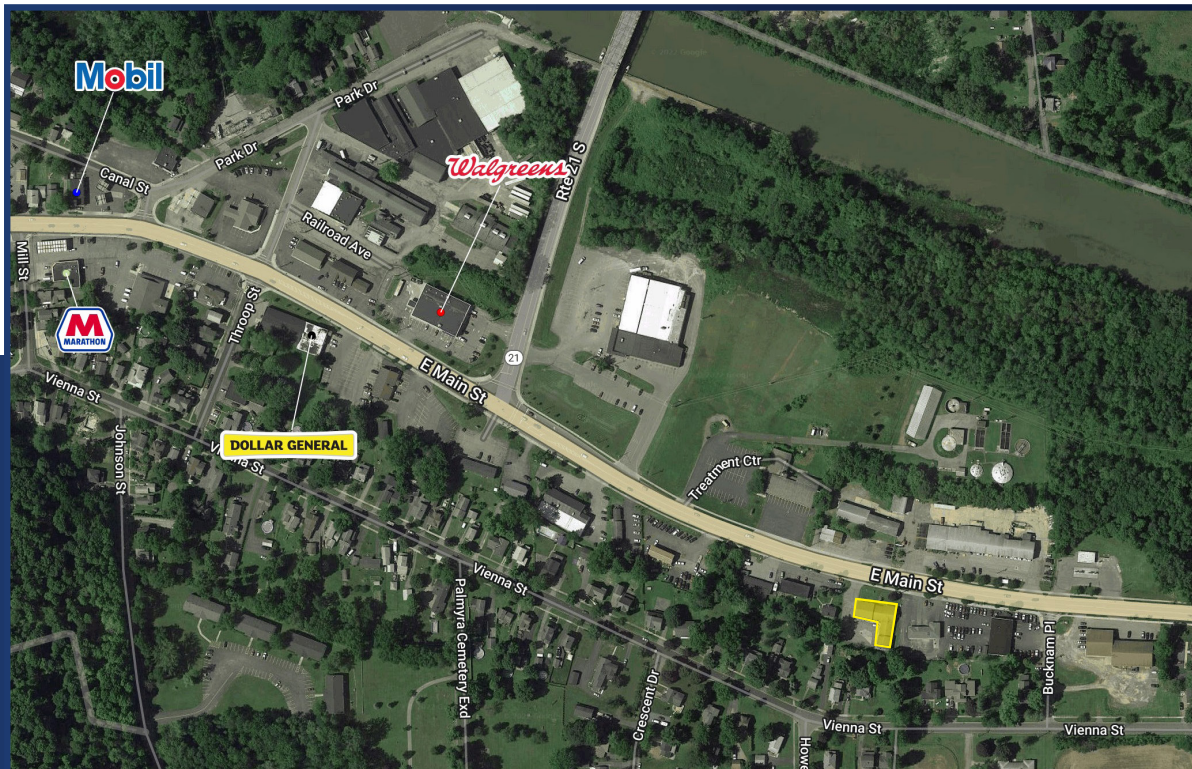
**Real Estate** *it's in our blood!*  
[www.flaummgt.com](http://www.flaummgt.com)

**Contact Us:** 400 Andrews Street #500 | Rochester, NY 14604 | 585.546.4866





Demographics	1 Mile	3 Miles	5 Miles
Population	2,659	7,420	13,980
Households	1,206	3,185	5,889
Average HH Income	\$106,377	\$102,473	\$89,545
Average Age	42.3	43.4	43.8



Let our experienced professionals help you today. With decades of experience, our team brings a wealth of knowledge in real estate, brokerage, and project management.

**Real Estate** *it's in our blood!*  
[www.flaummgt.com](http://www.flaummgt.com)

**Contact Us:** 400 Andrews Street #500 | Rochester, NY 14604 | 585.546.4866