

NEWLY LISTED OFFICE SPACE



OFFICE

910 Mill Ave. & 1400 S Elm St. | High Point, NC 27260

 **Square Footage**
11,148 +/- SF Available

 **Listing Price**
\$650,000

-  **Features**
- Private Offices
 - Ample Parking
 - Historic District
 - Built in 1967

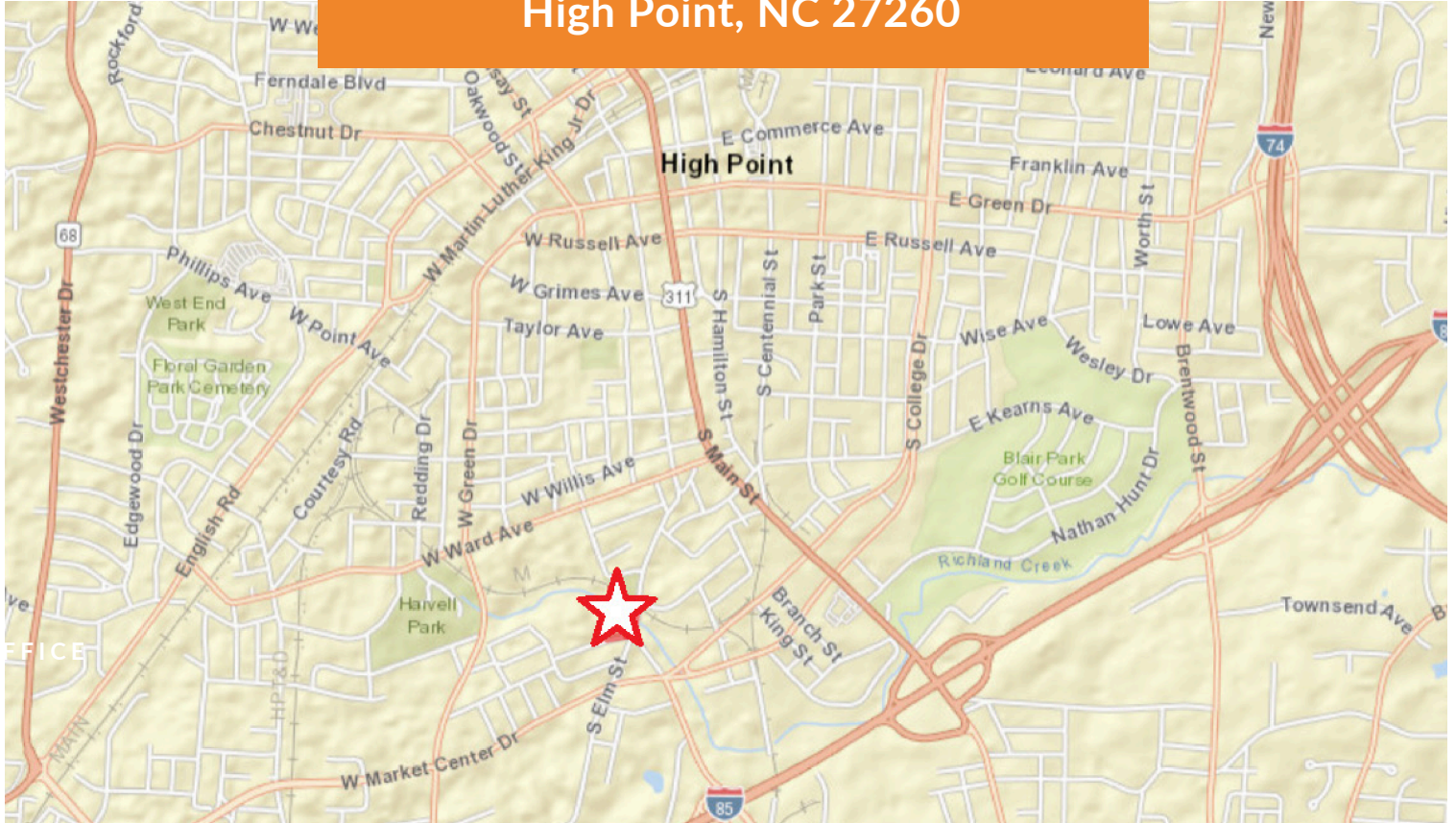


Unique office property located in the Highland Cotton Mills Village Historic District. Set on 7.327+/- acres, this versatile space offers a mix of private offices and open areas, perfect for accommodating a variety of uses.

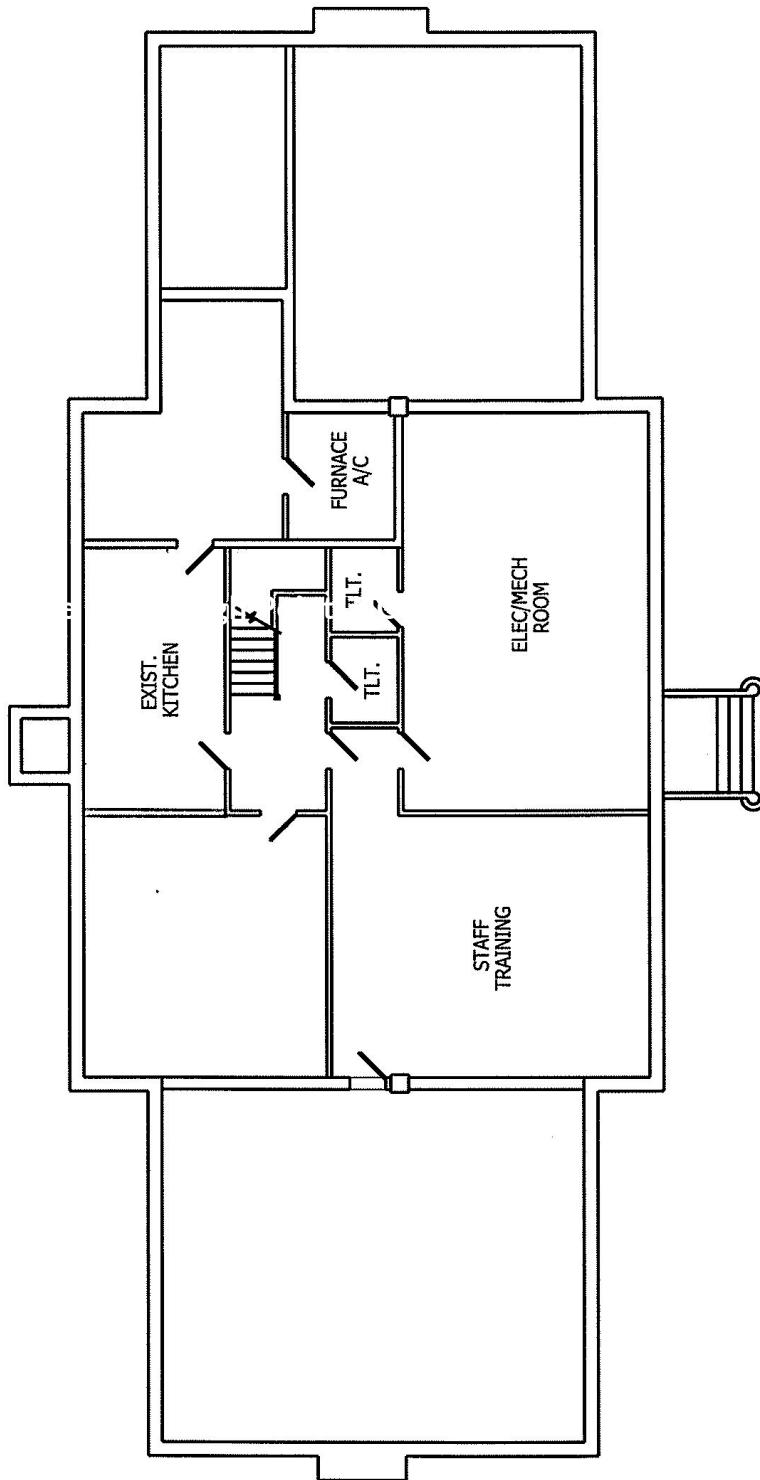
 **Agent**
MarcDeLille, Partner
marc@delillefield.com
[336-471-3003](tel:336-471-3003)



**910 Mill Avenue & 1400 S Elm Street
High Point, NC 27260**



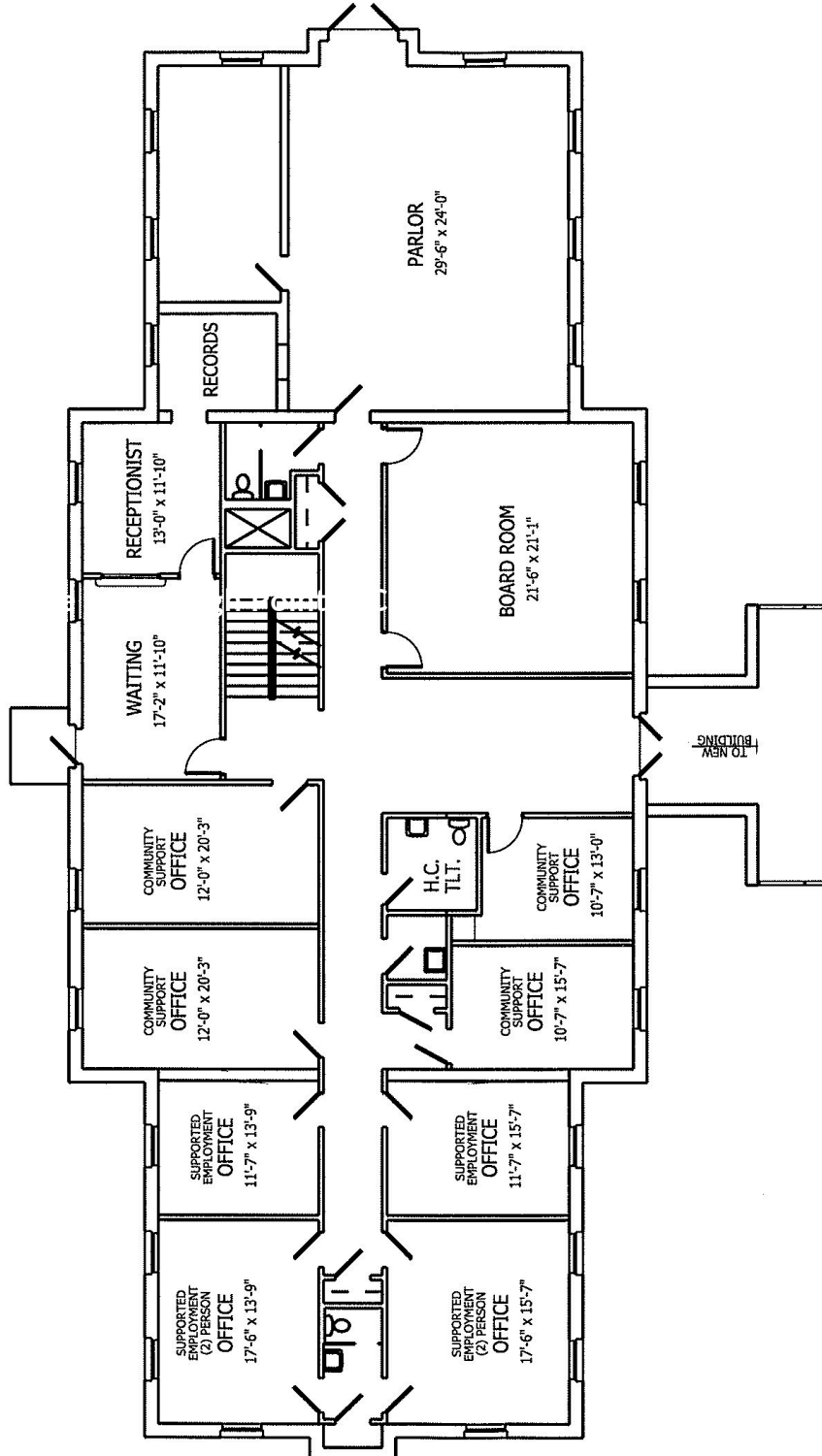
910 Mill Avenue & 1400 S Elm Street
High Point, NC 27260



BASEMENT FLOOR PLAN SCALE: N.T.S.

ROBBINS ARCHITECTURE, P.A.	
CARY, NC 27513, USA	
2644 WILKINS DRIVE, ROAD SUITE 122, HIGH POINT, NC 27285	
TEL: 336-881-6928 FAX: 336-881-6929	
JOB NO.: 0716	DATE: 11/18/08
MENTAL HEALTH ASSOCIATION	
	1

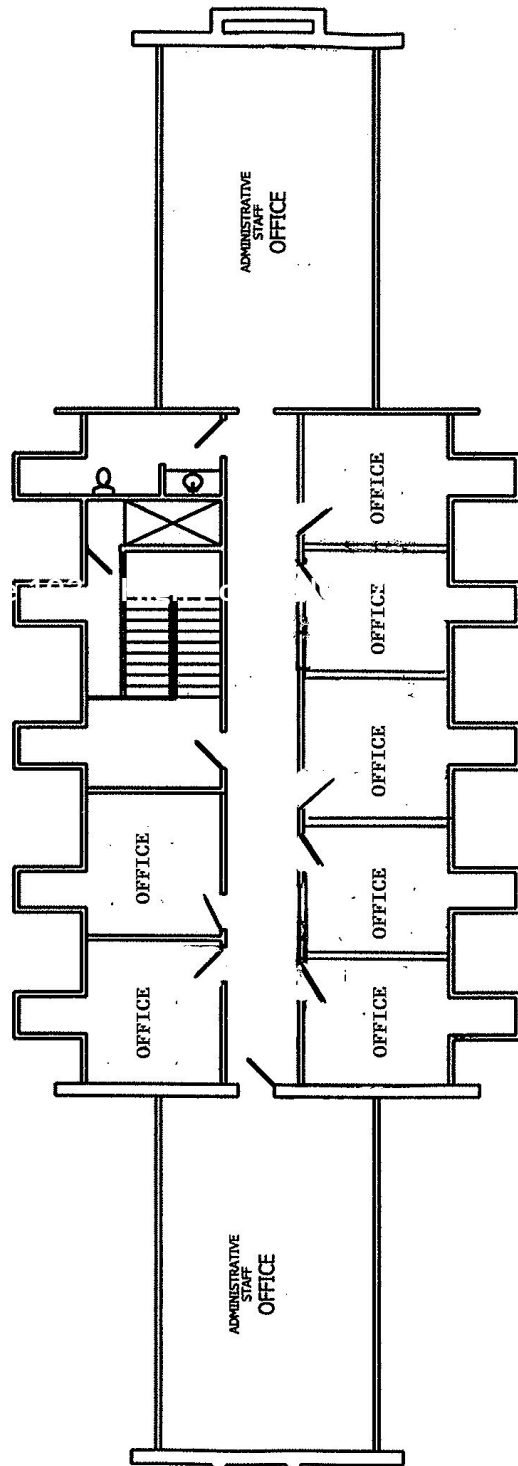
910 Mill Avenue & 1400 S Elm Street
High Point, NC 27260



ROBBINS ARCHITECTURE	
6947 E. ROBBINS AVE. HIGH POINT, NC 27260 TEL: 336-812-3175 FAX: 336-812-3175	
JOB NO.: 0716	DATE: 11/18/08
MENTAL HEALTH ASSOCIATION	
	2

FIRST FLOOR PLAN SCALE: N.T.S.

910 Mill Avenue & 1400 S Elm Street
High Point, NC 27260



SECOND FLOOR PLAN SCALE: N.T.S.

ROBBINS ARCHITECTURE,	
CARY E. ROBBINS, AIA	
1000 W. HUNTER STREET, SUITE 100, HIGH POINT, NC 27260	
TEL: 336-812-3175 FAX: 336-812-3176	
JOB NO.: 0716	DATE: 11/20/08
MENTAL HEALTH ASSOCIATION	
	3