

COS 6116 TRACT-1 NOT A PART

ACREAGE TABLE:
 COMMERCIAL LOTS (10)
 RESIDENTIAL LOT (LOT 1, BLK 3)
 OPEN SPACE (LOT 2, BLK 3)
 ROADS

TOTAL PHASE 2	56.925
32.981	6.139
0.602	17.303

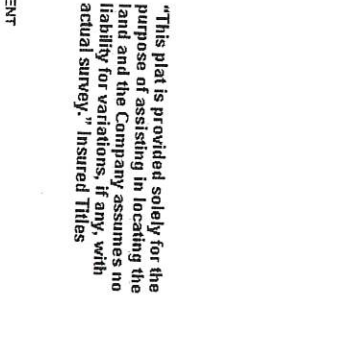
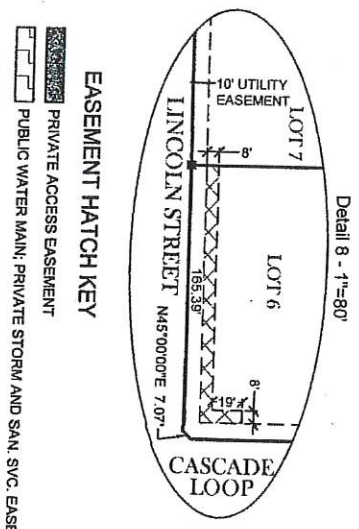
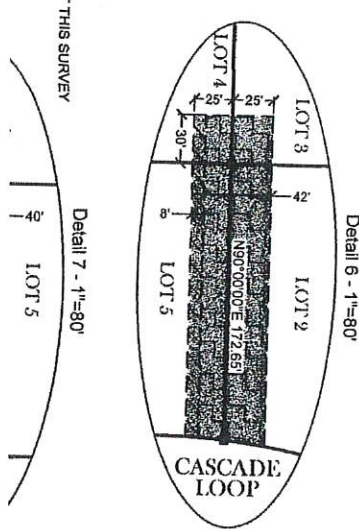
Available Single or 3 phase
 COS 6643
 PORTION OF TRACT-1
 NOT A PART

Valve is marked out

Available Single or 3 phase

COS 14606 TRACT 1 NOT A PART

LINE #	BEARING	DISTANCE
L1	N0°14'37"E	86.78'
L2	N0°14'37"E	13.90'
L3	N13°54'44"W	61.80'
L4	S80°00'00"W	103.09'
L5	S89°59'48"E	60.00'
L6	N0°33'45"W	5.37'
L7	S83°27'28"E	77.25'
L8	S89°48'47"E	30.09'
L9	N0°11'11"E	97.32'
L10	N14°12'39"E	61.91'
L11	N0°11'11"E	66.75'
L12	N0°11'11"E	9.64'
L13	N0°11'11"E	64.44'
L14	N89°48'47"W	40.18'
L15	S83°21'33"W	65.88'



EASEMENT HATCH KEY
 PRIVATE ACCESS EASEMENT
 PUBLIC WATER MAIN, PRIVATE STORM AND SAN. SVC. EASEMENT

10' WIDE GAS LINE EASEMENT RUNNING ALONG THE EAST PORTION OF THE NW1/4 OF SECTION 30. EXACT LOCATION OF GAS LINE EASEMENT IS NOT DISCLOSED BY DOCUMENT 8930511300

"This plat is provided solely for the purpose of assisting in locating the land and the Company assumes no liability for variations, if any, with actual survey." Insured Titles