

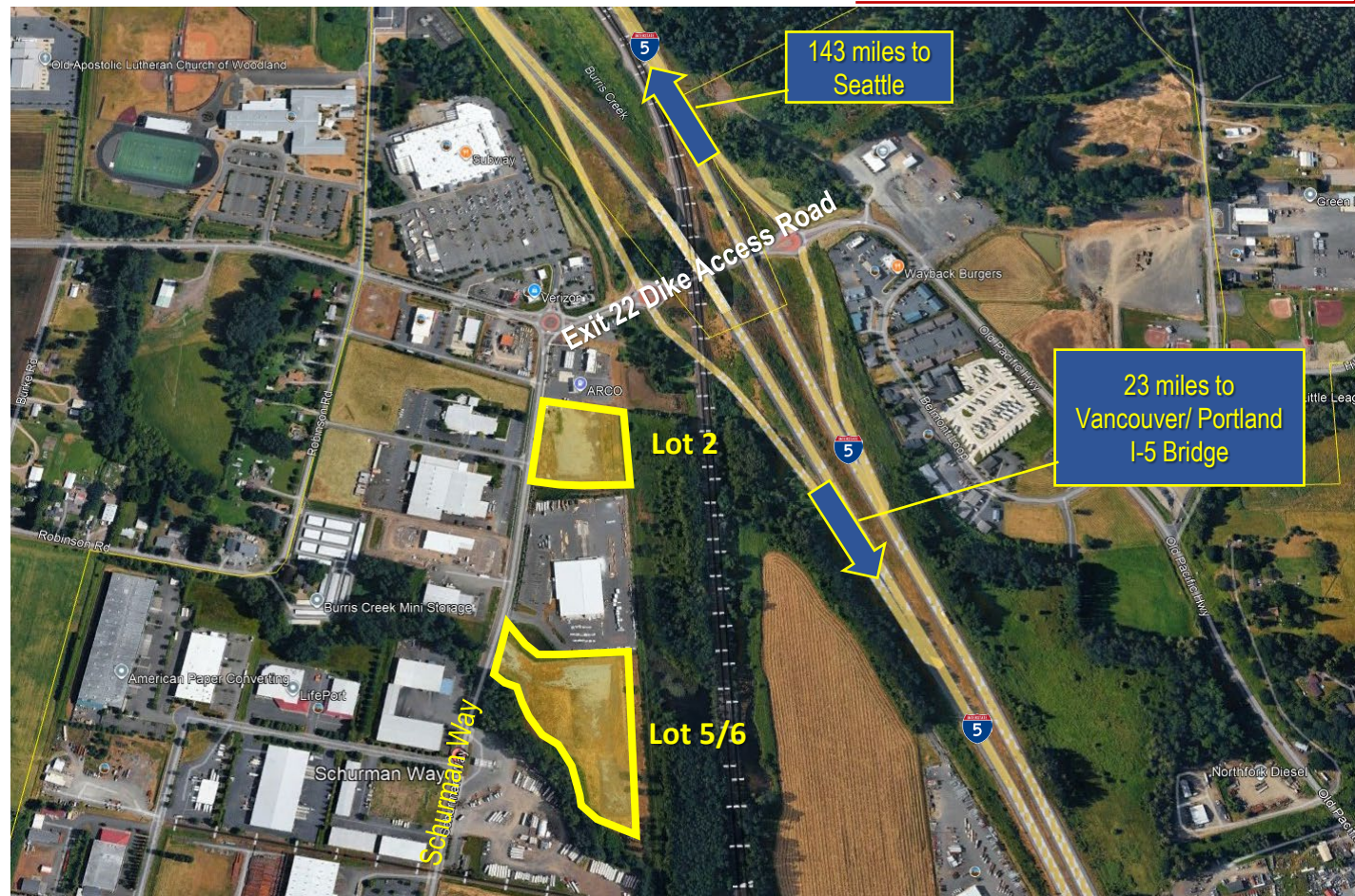
# FOR SALE

## WOODLAND COMMERCE CENTER

Schurman Way | Woodland, WA 98674



900 Washington St, Suite 850, Vancouver, WA  
360.750.5595 | [www.fg-cre.com](http://www.fg-cre.com)



## PROPERTY HIGHLIGHTS

- Two lots zoned light industrial located along Schurman Way in Woodland, WA
- Lot 2 consists of approx. 3.99 acres of net usable land, while Lot 5/6 consists of approx. 9.12 acres of net usable land
- Flexible light industrial zoning allows for a variety of uses, including yard storage and outdoor sales
- Parcels are ideally located just off Exit 22 and features easy access, including full-sized semis, to I-5

- Parcels have been previously preloaded for ease of development
- All utilities easily available along Schurman Way

Sale price:

- Lot 2 - \$1,303,500 (approx. \$7.50/SF)
- Lot 5/6 - \$2,582,500 (approx. \$6.50/SF)

### FOR MORE INFORMATION:

**Garret Harper**, SIOR, CCIM  
360.597.0572 | [gharper@fg-cre.com](mailto:gharper@fg-cre.com)

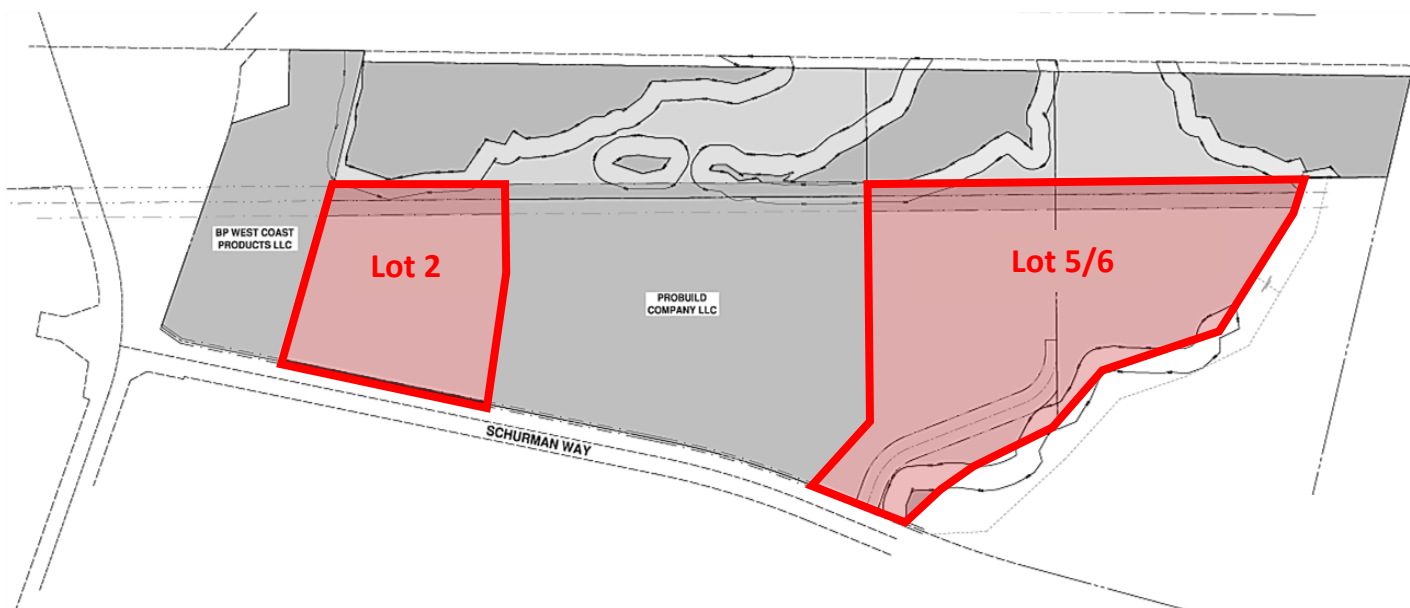
# FOR SALE

## WOODLAND COMMERCE CENTER

Schurman Way I Woodland, WA 98674



900 Washington St, Suite 850, Vancouver, WA  
360.750.5595 | [www.fg-cre.com](http://www.fg-cre.com)

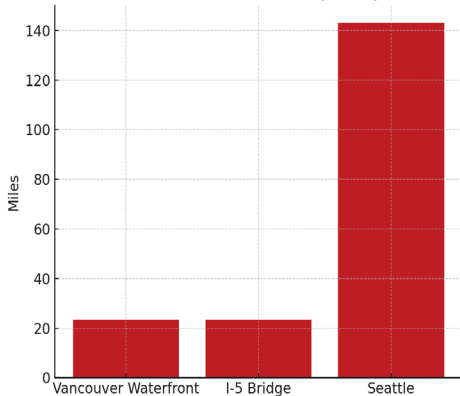


*\*Shading indicates estimated useable area*

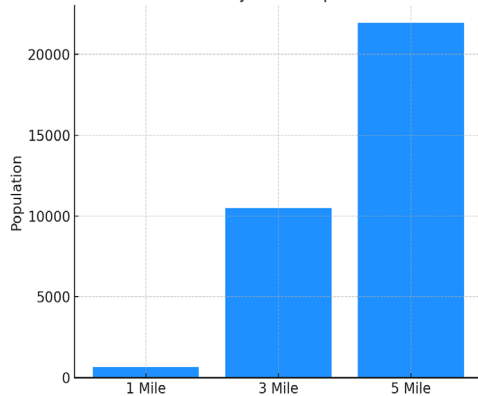


### 2024 DEMOGRAPHICS

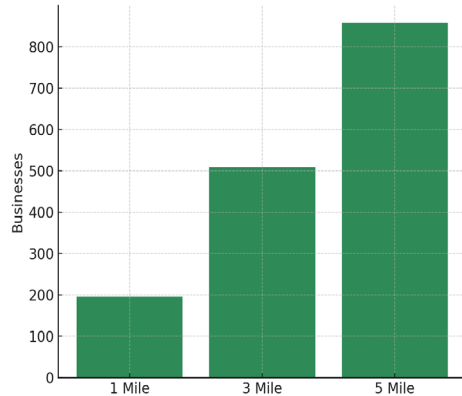
Distances from Site (miles)



2029 Projected Population



Estimated Total Businesses



This statement with the information it contains is given with the understanding that all the negotiations relating to the purchase, rental or leasing of the property described above shall be conducted through this office. The above information, while not guaranteed, has been secured from sources we believe to be reliable.