

FOR LEASE | JOSHUA TREE

**2ND GEN RESTAURANT
WITH TYPE 47 LICENSE**



Hotel + Gear Shop

54850

TWENTYNINE PALMS HIGHWAY



URBANLIME
REAL ESTATE

Highlights

- **2nd Gen. restaurant space**
- **Type 47 License**
- **Rental Rate And Terms: Negotiable**
- **Approx. 5,000 SF**
- **Part of the FieldStation Hotel, a new 69 room hotel conveniently located in Yucca Valley**
- **10 Minutes Away From Pioneertown & 15 Minutes From Joshua Tree National Park**
- **3,000,000 People Visit Joshua Tree National Park Every Year, Yes That Is Correct!**

Available Site



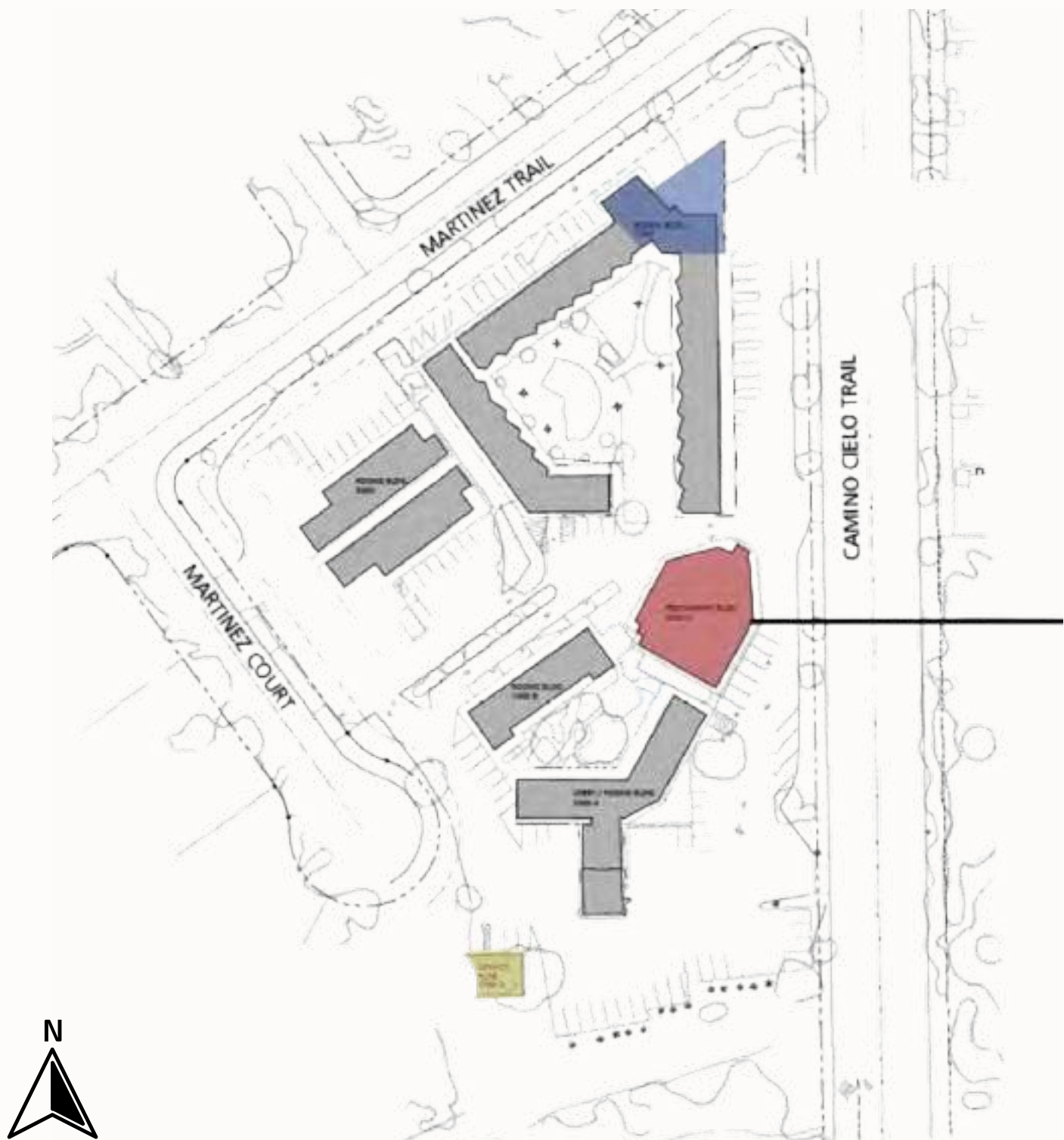
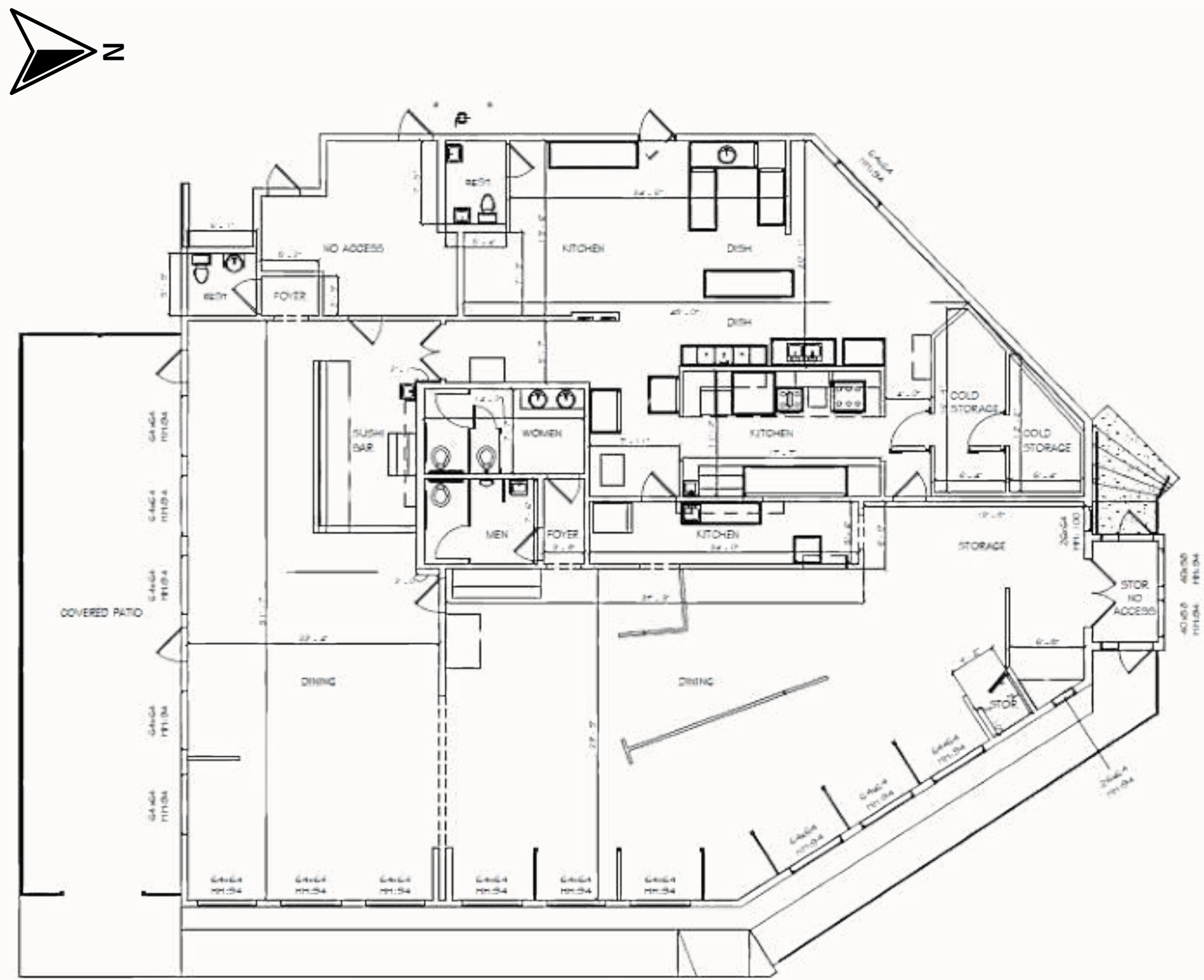
FieldStation

Located in Yucca Valley The Fieldstation Hotel is an exceptional destination for those looking to explore the natural wonders of Joshua Tree National Park. Its prime location offers convenient access to the park's main entrance, making it an ideal base for daily excursions to hike, rock climb, and stargaze. The hotel itself blends modern comfort with a rustic charm, providing guests with a relaxing retreat after a day of adventure. Additionally, Yucca Valley's proximity to both Joshua Tree and the vibrant cultural scene of Downtown Los Angeles makes it a strategic spot for travelers who want to experience the best of both worlds. Whether you're looking to immerse yourself in nature or enjoy the amenities of a well-appointed hotel, Fieldstation Hotel ensures a memorable stay.





Floorplan



Joshua Tree

Joshua Tree National Park is renowned for its rugged rock formations and stark desert landscapes. Spanning over 790,000 acres, the park is named after the unique Joshua trees that dot its landscape. The park encompasses parts of two distinct deserts, the Mojave and the Colorado, each offering diverse ecosystems and a variety of flora and fauna. Popular activities in the park include rock climbing, hiking, stargazing, and photography, drawing outdoor enthusiasts from around the world. Key attractions include Hidden Valley, Skull Rock, and Keys View, which offers panoramic vistas of the Coachella Valley and beyond.

Joshua Tree National Park has seen a significant increase in popularity over the past decade. The park receives over 3 million visitors annually, a number that has grown steadily due to its proximity to major urban areas like Los Angeles and San Diego. The visitor base is diverse, attracting individuals from various age groups, ethnic backgrounds, and regions. While the majority of visitors are domestic, a substantial number of international tourists also explore the park. The surrounding communities, such as Twentynine Palms and Joshua Tree, benefit economically from tourism, providing lodging, dining, and recreational services to the park's visitors.







FieldStation



**YUCCA
VALLEY
OUTPOST**





CONTACT US:

Ty Del Re

Senior Vice President 323.979.7535
BRE# 01947880 Ty@urbanlimere.com

Chris Stewart

Senior Associate 213.400.4454
BRE# 02142374 chris@urbanlimere.com

FieldStation
BY AUTOCAMP

Hotel + Gear Shop