



2339

GOLD MEADOW WAY,
GOLD RIVER, CA

FOR
LEASE

FOR INFORMATION, PLEASE CONTACT

JACK BLACKMON

Director
T 916-494-2349
jack.blackmon@nmrk.com

JODIE ROBINSON

Associate
T 916-569-2318
jodie.robinson@nmrk.com

NEWMARK

PROPERTY HIGHLIGHTS

2339
GOLD MEADOW WAY,
GOLD RIVER, CA

- \$1.85/RSF – Full Service Gross
- Recently renovated, modern lobby experience
- Fully remodeled restrooms with updated finishes
- Freshly painted common areas and new exterior paint throughout
- Prominent two-story ±46,586 SF office building within a prestigious master-planned office park
- Surrounded by upscale retail, dining, and banking amenities
- Seamless access to Highway 50 via Sunrise Blvd and Hazel Ave
- Monument signage opportunity for strong brand visibility



AVAILABLE SPACE

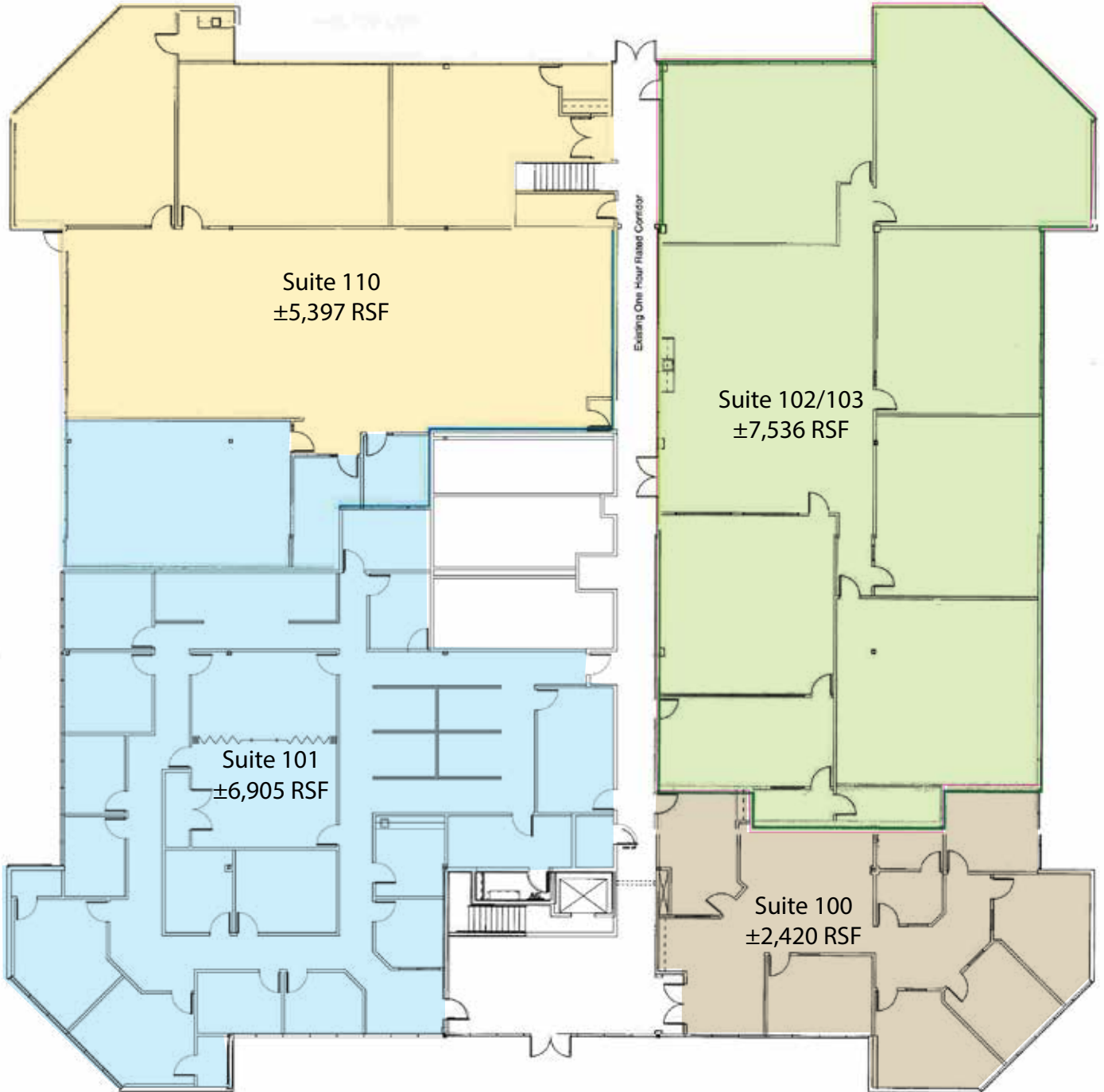
2339
GOLD MEADOW WAY,
GOLD RIVER, CA

Suite 100	±2,420 RSF
Suites 102/103	±7,536 RSF (divisible)
Suites 100 & 102/103	±9,956 RSF (COMBINED)
Suite 110	±5,397 RSF
Suite 204	±2,732 RSF
Suite 220	±4,010 RSF
Suite 225	±1,409 RSF
Suite 230	±726 RSF
Suites 204, 220 & 230	±7,468 RSF



FIRST FLOOR AVAILABLE - ±22,258 RSF

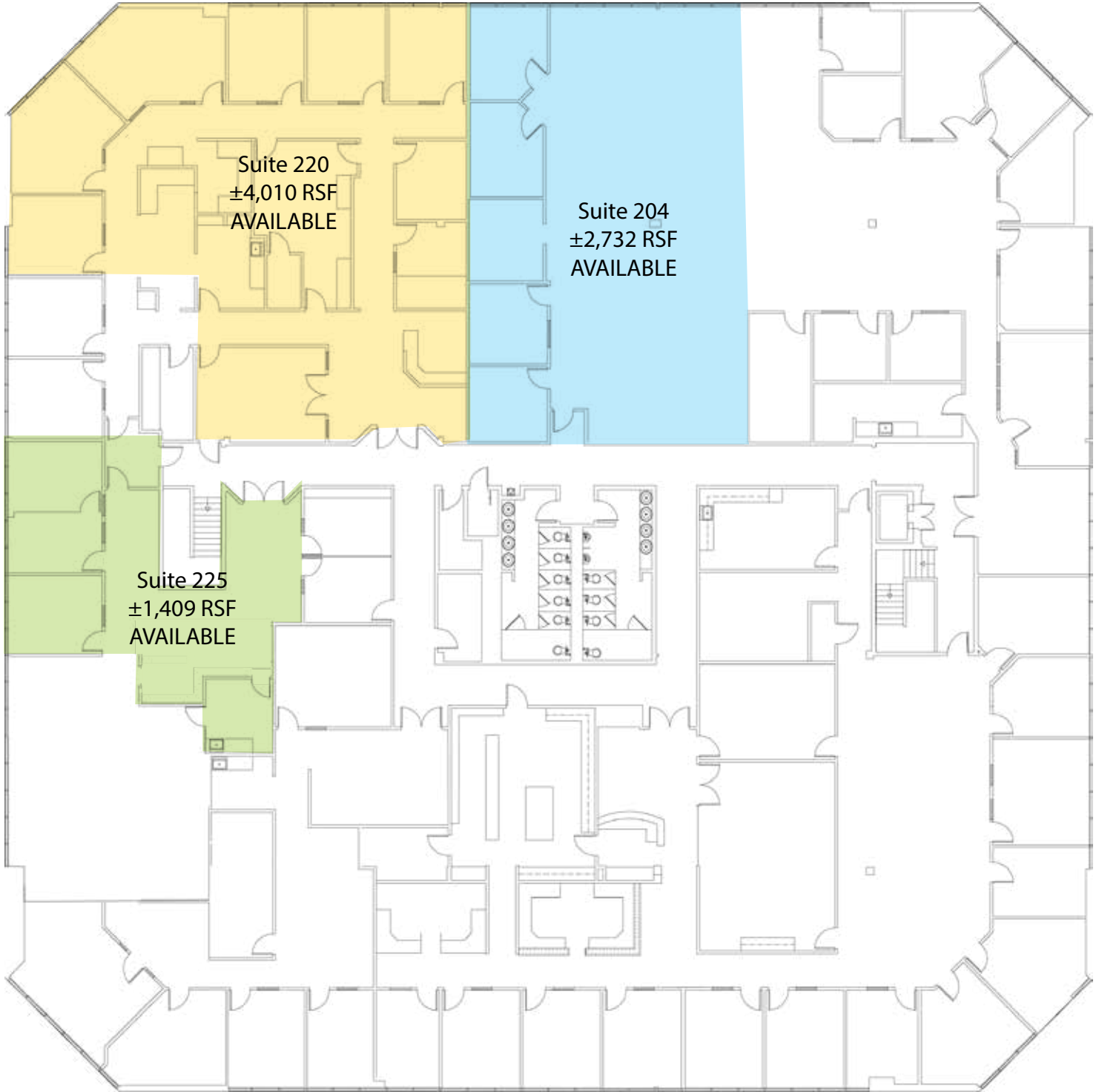
2339
GOLD MEADOW WAY,
GOLD RIVER, CA



SECOND FLOOR PLAN

2339

GOLD MEADOW WAY,
GOLD RIVER, CA



PROPERTY PHOTOS

2339
GOLD MEADOW WAY,
GOLD RIVER, CA



SITE PLAN

2339
GOLD MEADOW WAY,
GOLD RIVER, CA



RETAIL AERIAL

2339
GOLD MEADOW WAY,
GOLD RIVER, CA



2339

GOLD MEADOW WAY,
GOLD RIVER, CA

BPE LAW
GROUP

The distributor of this communication is performing acts for which a real estate license is required. The information contained herein has been obtained from sources deemed reliable but has not been verified and no guarantee, warranty or representation, either express or implied, is made with respect to such information. Terms of sale or lease and availability are subject to change or withdrawal without notice.

All images used are for illustrative purposes only and are intended to convey the concept and vision for the asset. They are for guidance only, may alter as work progresses and do not necessarily represent a true and accurate depiction of the asset. All images and dimensions are not intended to form part any contract or warranty. 2/2026

NEWMARK

JACK BLACKMON

Director
T 916-494-2349
jack.blackmon@nmrk.com

JODIE ROBINSON

Associate
T 916-569-2318
jodie.robinson@nmrk.com