

Two Office Space Available for Lease

2777 Miccosukee Road Suite 1 and 3, Tallahassee, FL

For inquiries or to schedule a tour:

Call or text: (561) 337-4420



Key Highlights:

- ✓ Two available suites: 4,042 SF (approx.) & 1,848 SF (approx.)
- ✓ Prime location between Tallahassee Memorial & Capital Regional
- ✓ Ideal for medical, healthcare, or professional offices
- ✓ High visibility on Miccosukee Rd & Capitol Circle
- ✓ Flexible layouts, ample shared parking
- ✓ Prominent Signage on Miccosukee
- ✓ Minutes from I-10 and Capitol Circle

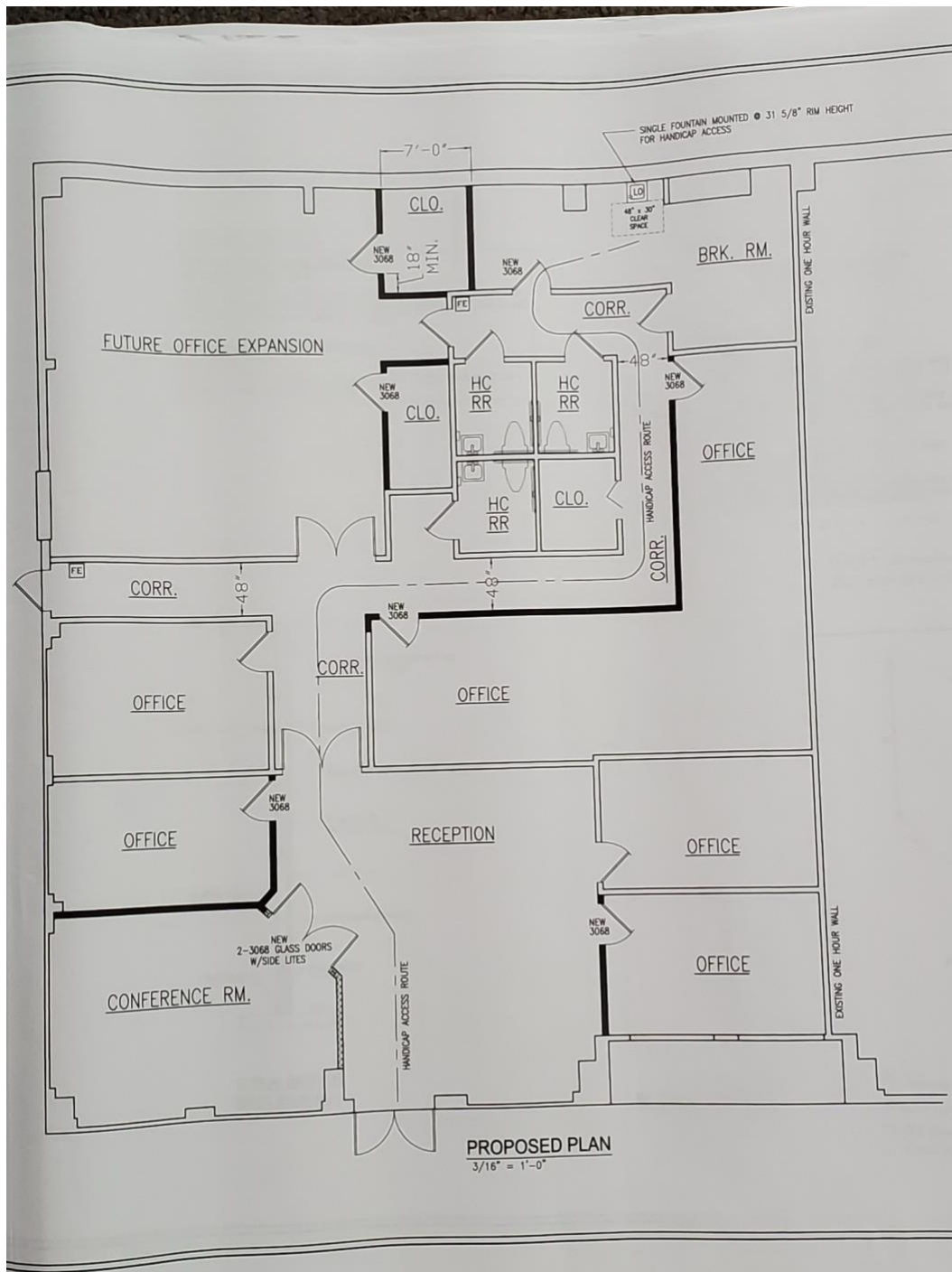


Stand Out Where It Matters Most!

Corner signage at Miccosukee and Capital Circle gives your business unbeatable visibility. With nonstop traffic flow, your brand will be front and center—catching the attention of patients, clients, and professionals every single day.

Floor Plan (Suite 1)

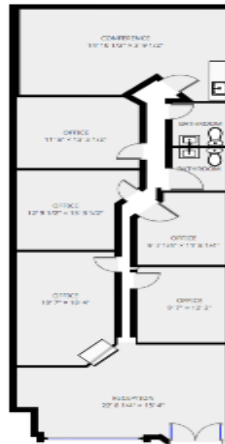
The space is offered as-is, with flexibility for tenants to customize as needed.



Floor Plan (Suite 3)

The space is offered as-is, with flexibility for tenants to customize as needed.

SUITE 3
2777 MICCOSUKEE ROAD, TALLAHASSEE, FL
Ground Floor



ALL DIMENSIONS ARE APPROXIMATE AND NOT TO SCALE. DIMENSIONS ARE GIVEN FOR INFORMATION ONLY. DIMENSIONS ARE NOT TO BE USED FOR CONSTRUCTION OR ANY OTHER PURPOSE. DIMENSIONS ARE NOT TO BE USED FOR ANY OTHER PURPOSE.