

FLEX WAREHOUSE FOR LEASE

2301 Higgins Lane
Haltom City, Texas



Property Information

LOCATION

The property is located immediately south of 28th St., 1.5 miles to Hwy. 121, 2 miles to I-35 and 3.3 miles to Loop 820 N.

AVAILABLE SPACE

Units 900 - 2,440 sq. ft. w/ large office, break room and RR

ZONING

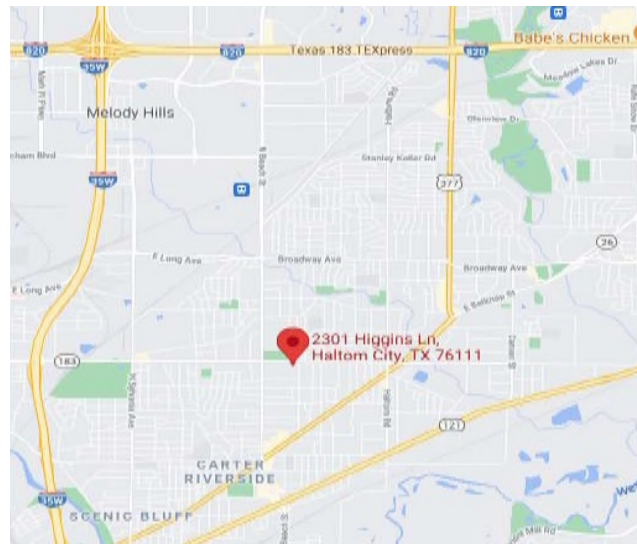
“M-1” Industrial

COMMENTS

- 12 ft. Overhead doors on both sides.
- 100 ‘ bay depth
- 18’ side walls and 26’ center
- 3 phase power
- Sprinkled building
- 2.98 per 1,000 parking

RATE

\$10 per sq. ft. plus \$2.75 in Triple Nets

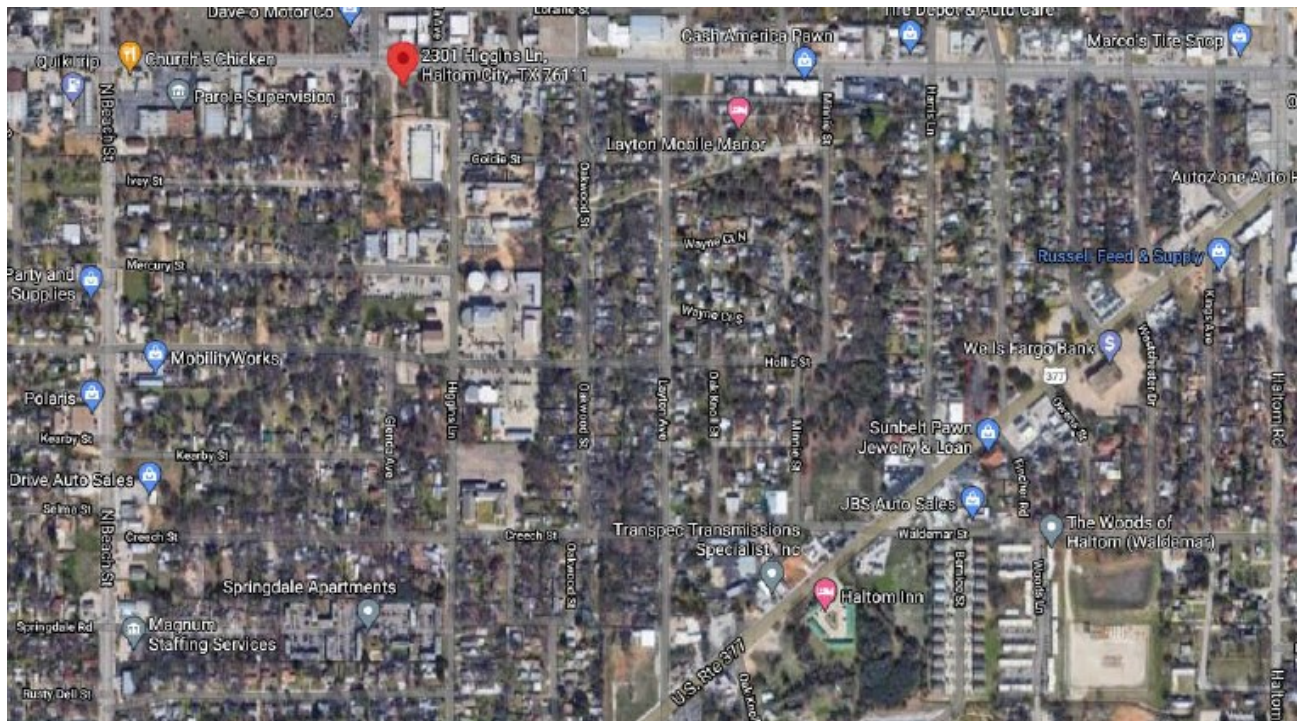
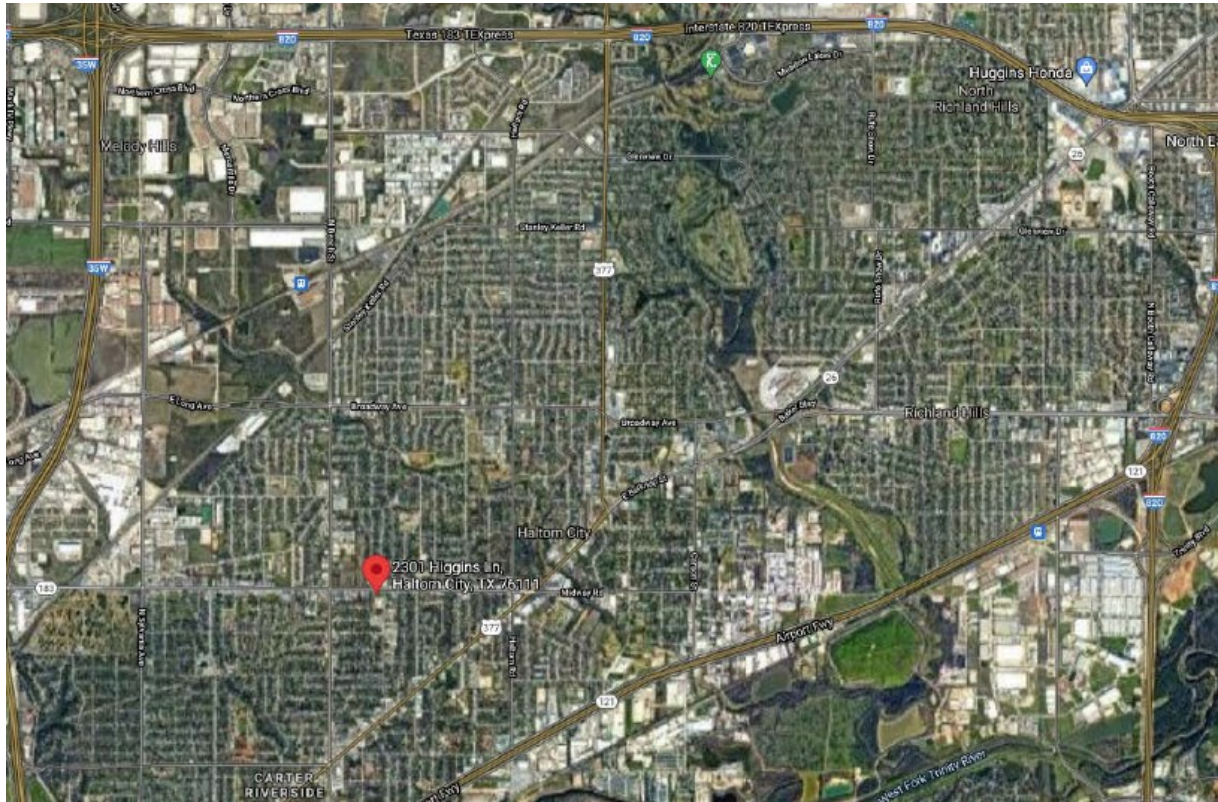


For Information

Don D. Phifer
817-427-9545 office
817-239-7100 cell
Phifer@LandDeals.com

FLEX WAREHOUSE FOR LEASE

2301 Higgins Lane
Haltom City, Texas



FLEX WAREHOUSE FOR LEASE

2301 Higgins Lane
Haltom City, Texas

