



FOR LEASE - CREATIVE OFFICE SPACE  
LOCATED IN THE HEART OF DOWNTOWN JACKSONVILLE

# 45 WEST BAY STREET

2,320 - 3,020 SF | 2<sup>ND</sup> FLOOR



 CUSHMAN &  
WAKEFIELD





FOR LEASE

# 45 WEST BAY STREET

2,320 - 3,020 SF | 2<sup>ND</sup> FLOOR

## About the Building

- Tenant mix includes Urban Grind Coffee, Davalt Optical, and Her Hope Behavioral Health
- Excellent visibility on Bay Street with window signage
- Tenants have 24/7 access to the building and use of the atrium/courtyard
- Newly-restored building façade
- All-new HVAC systems installed in 2021

**SARAH TEAGLE**

+1 904 380 8342

[sarah.teagle@cushwake.com](mailto:sarah.teagle@cushwake.com)





Exciting growth and new developments happening in one block area, such as the JU School of Law with room for 450 law students plus faculty and staff

.....



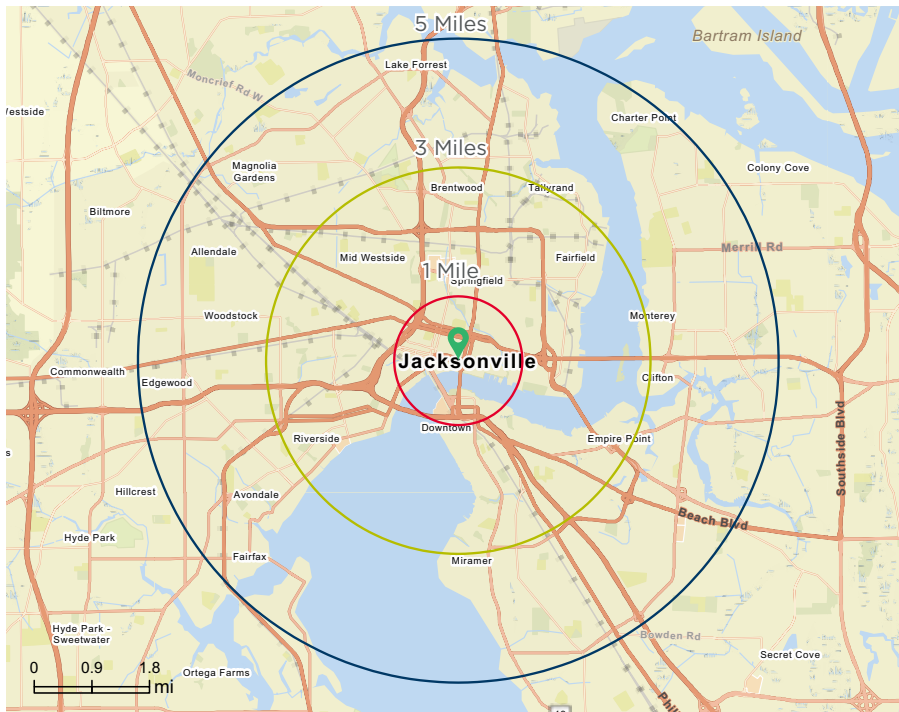
Urban location in the heart of Downtown Jacksonville on the North Bank  
Zoning: CCBD

.....



Close proximity to multiple green spaces including Riverfront Plaza and Emerald Trail  
Walk Score: Walker's Paradise (94)





## Demographics

Population	1 Mile	3 Miles	5 Miles
Total Population	11,512	83,045	209,115
Daytime Population	65,046	168,997	309,513
Median Age	41.1	38.7	38.7
Male Population	6,974	41,715	102,504
Female Population	3,564	37,434	98,662
Household Income	1 Mile	3 Miles	5 Miles
Total Households	4,923	36,758	88,662
# Persons per HH	2.3	2.3	2.4
Average HH Income	\$76,596	\$73,393	\$77,835
Average HH Value	\$498,406	\$363,983	\$366,177

\*Source: Esri 2025

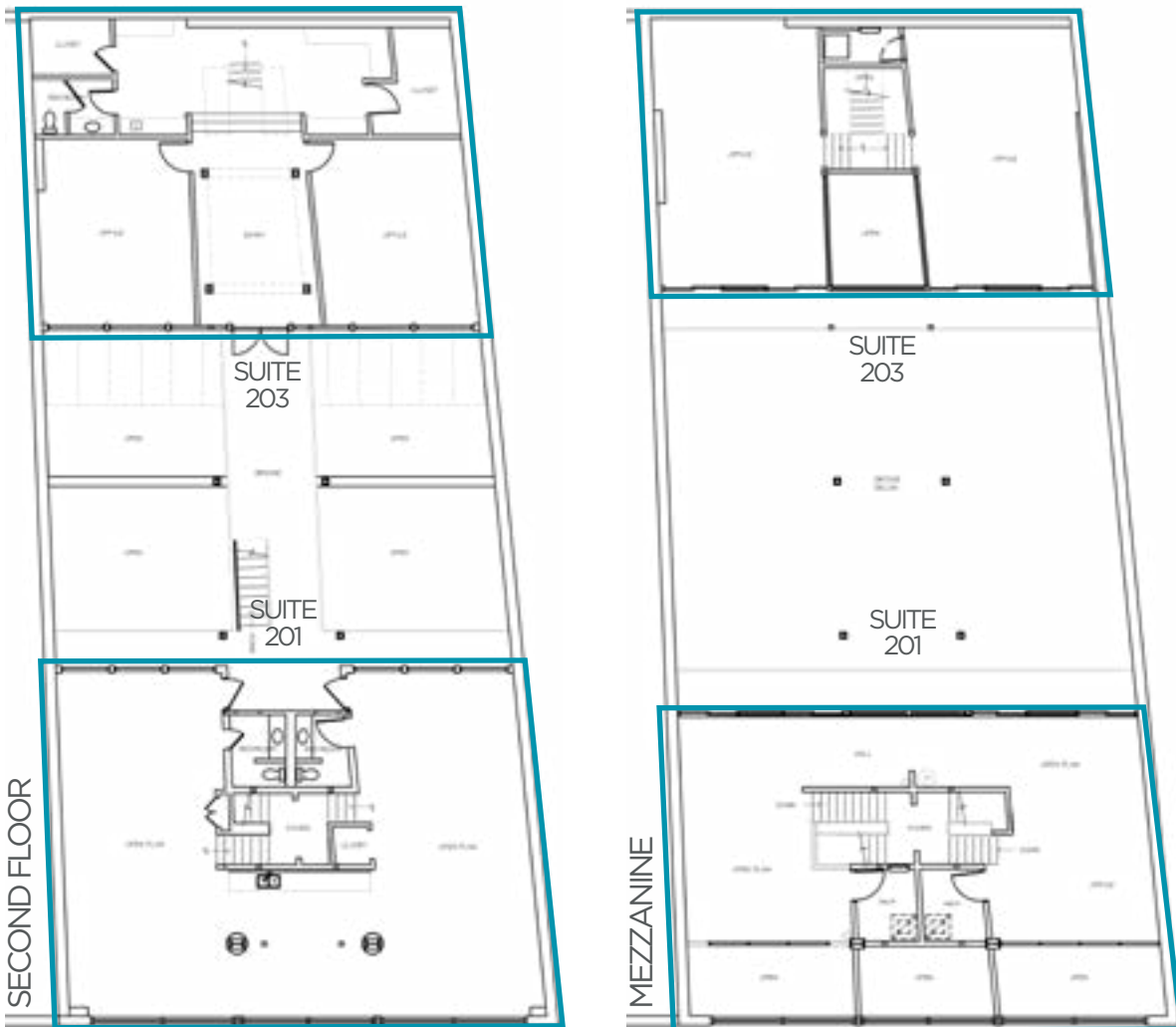


**SARAH TEAGLE**

+1 904 380 8342

sarah.teagle@cushwake.com

# FLOOR PLAN



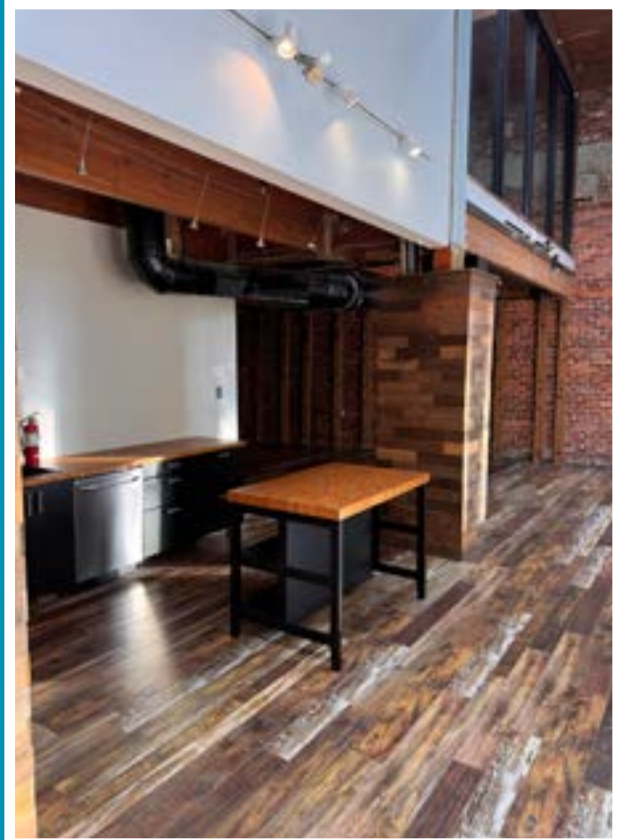
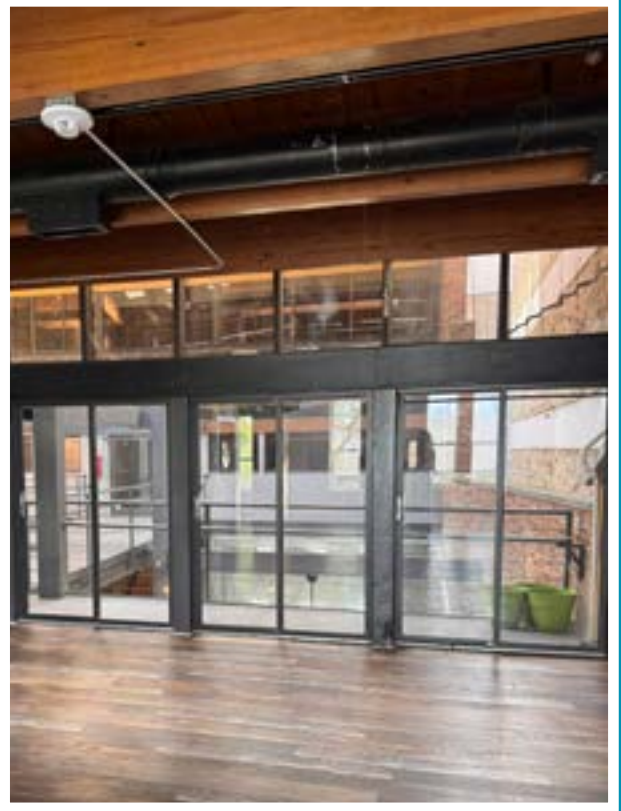
45 WEST BAY STREET

## Availability

Suite	SF	Lease Rate
201	3,020	Negotiable
203	2,320	Negotiable



# SUITE 201

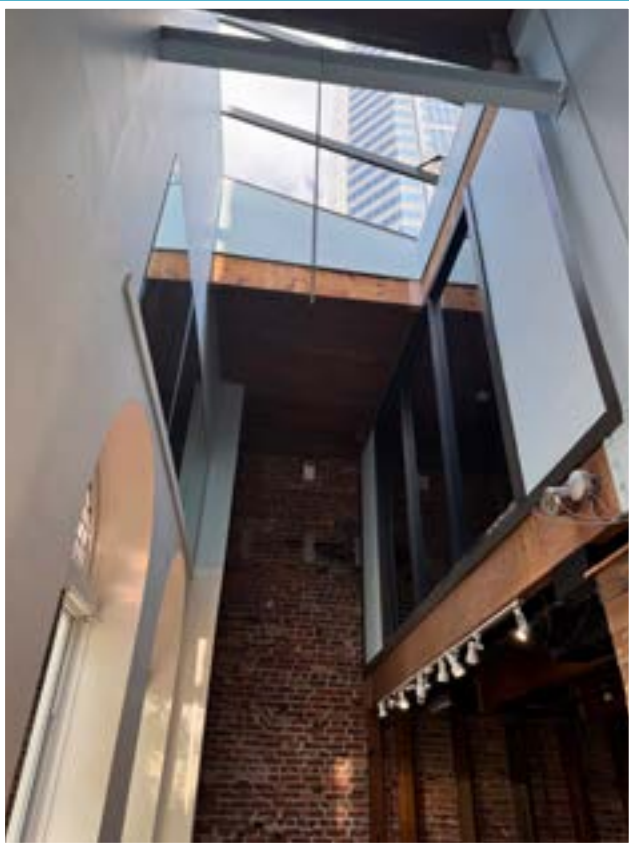


**SARAH TEAGLE**

+1 904 380 8342

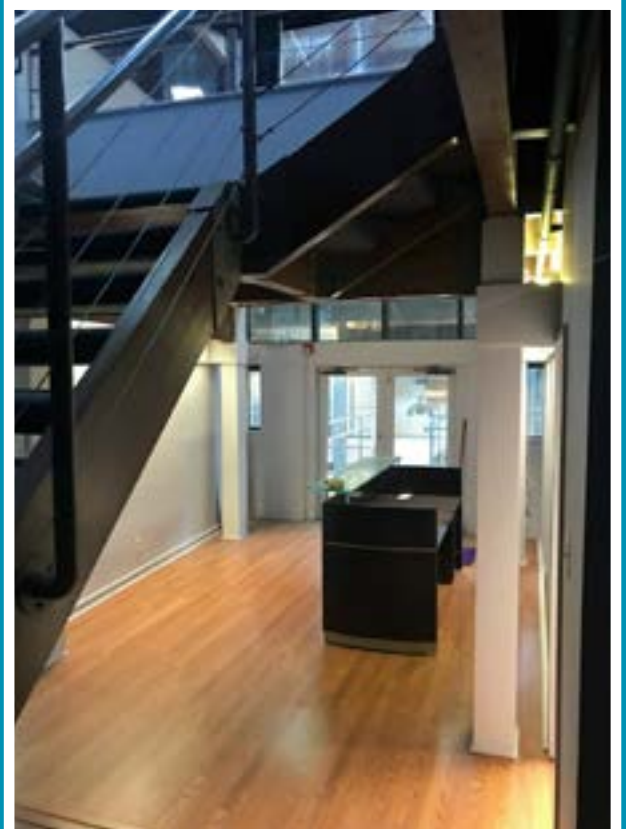
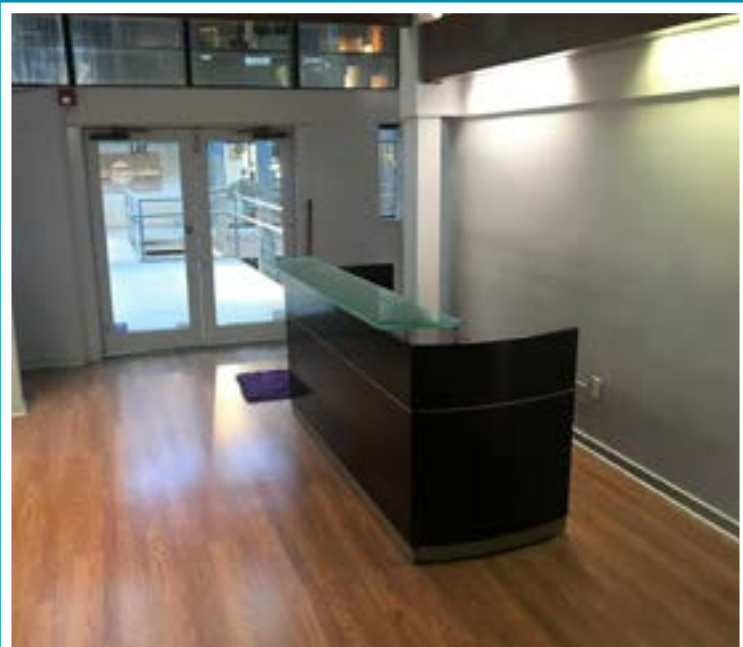
[sarah.teagle@cushwake.com](mailto:sarah.teagle@cushwake.com)

# SUITE 201





# SUITE 203



**SARAH TEAGLE**

+1 904 380 8342

[sarah.teagle@cushwake.com](mailto:sarah.teagle@cushwake.com)



[illegible]

+1 904 380 8342  
sarah.teagle@cushwake.com



FOR LEASE

# 45 WEST BAY STREET

2,320 - 3,020 SF | 2<sup>ND</sup> FLOOR



**CUSHMAN &  
WAKEFIELD**

©2025 Cushman & Wakefield. All rights reserved. The information contained in this communication is strictly confidential. This information has been obtained from sources believed to be reliable but has not been verified. NO WARRANTY OR REPRESENTATION, EXPRESS OR IMPLIED, IS MADE AS TO THE CONDITION OF THE PROPERTY (OR PROPERTIES) REFERENCED HEREIN OR AS TO THE ACCURACY OR COMPLETENESS OF THE INFORMATION CONTAINED HEREIN, AND SAME IS SUBMITTED SUBJECT TO ERRORS, OMISSIONS, CHANGE OF PRICE, RENTAL OR OTHER CONDITIONS, WITHDRAWAL WITHOUT NOTICE, AND TO ANY SPECIAL LISTING CONDITIONS IMPOSED BY THE PROPERTY OWNER(S). ANY PROJECTIONS, OPINIONS OR ESTIMATES ARE SUBJECT TO UNCERTAINTY AND DO NOT SIGNIFY CURRENT OR FUTURE PROPERTY PERFORMANCE.