



OFFICE SPACE | **FOR LEASE**

**700 EAST BOULEVARD, UNIT 4 | CHARLOTTE**

Newly renovated office space available on East Blvd.  
in the heart Charlotte's coveted Dilworth neighborhood,  
minutes from SouthEnd, Uptown and I-277.

**ZACH DANIEL, CCIM**

c 704 560 1192

[zdaniel@mecacommercial.com](mailto:zdaniel@mecacommercial.com)

**KEVIN MITCHELL**

c 704 317 9245

[kmitchell@mecacommercial.com](mailto:kmitchell@mecacommercial.com)



**MECA**  
COMMERCIAL REAL ESTATE





## PROPERTY INFORMATION

**SF\***  
1,509 SF

### FEATURES

- Recent renovation includes new kitchen, appliances, bathroom (with shower), electrical/data wiring, recessed lighting, paint, refinished floors, HVAC, balcony and more
- Coveted Dilworth location
- Balcony (approximately 180 SF\*) is perfect for unwinding or entertaining clients
- Signage available on East Blvd
- Available January 1, 2025

### LEASE RATE

\$4,500/Month

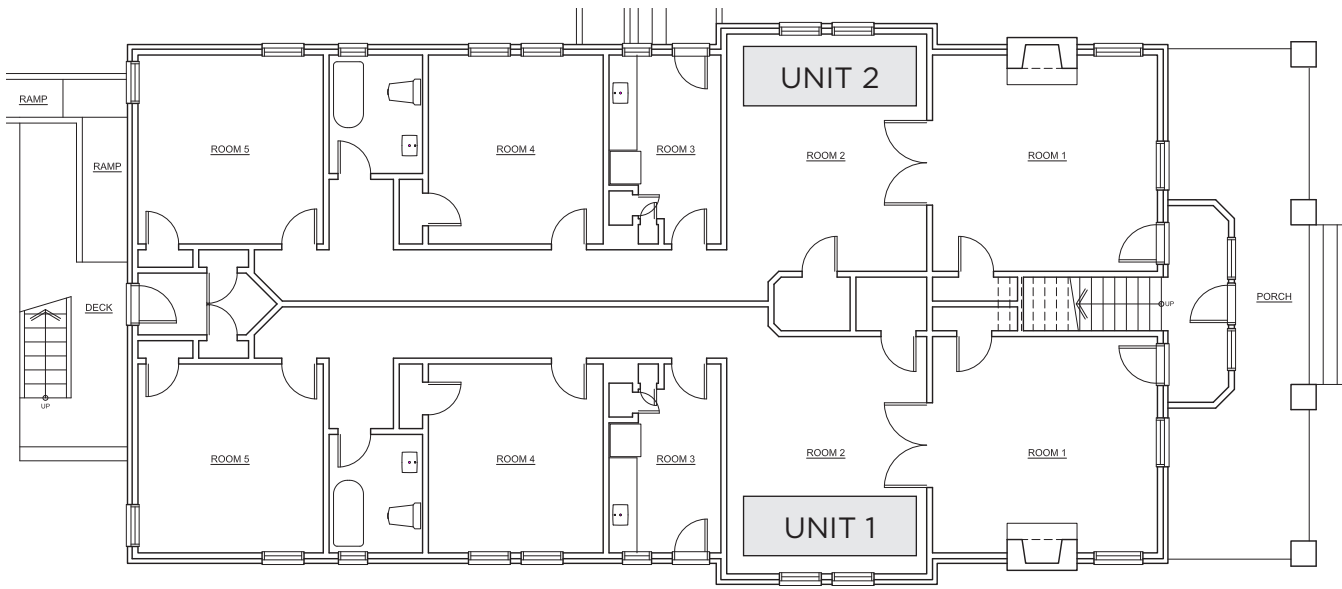
**ZACH DANIEL, CCIM**  
c 704 560 1192  
zdaniel@mecacommercial.com

**KEVIN MITCHELL**  
c 704 317 9245  
kmitchell@mecacommercial.com

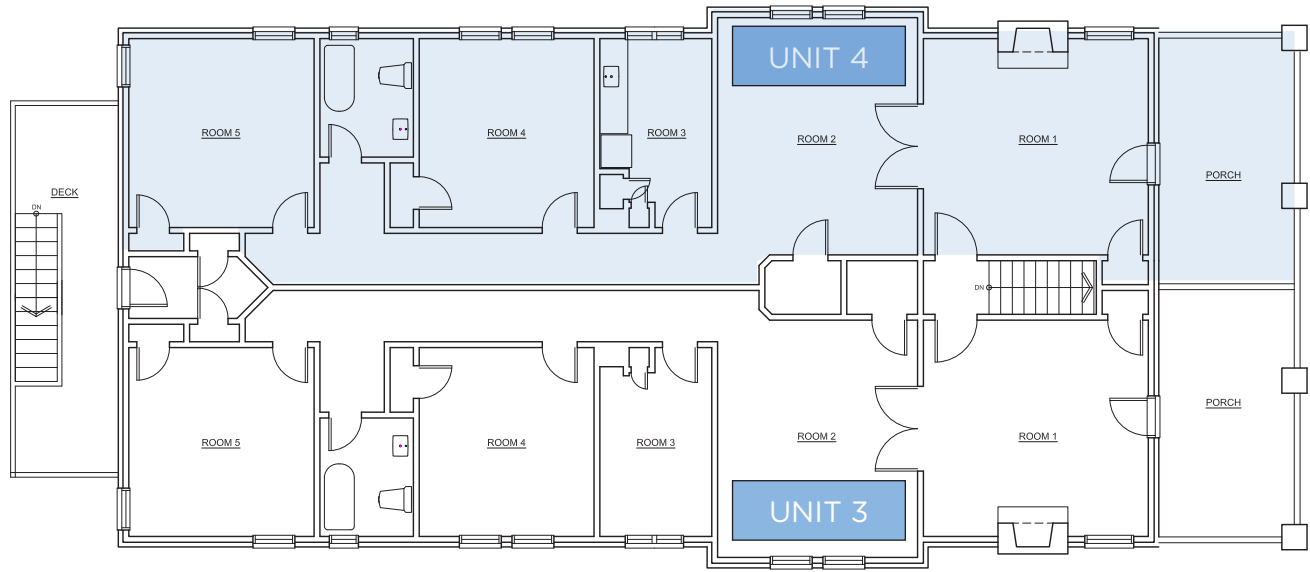
MECA Commercial Real Estate  
2216 Monument Street  
Charlotte, NC 28208  
704 971 2000



**MECA**  
COMMERCIAL REAL ESTATE



FIRST FLOOR PLAN



SECOND FLOOR PLAN

**ZACH DANIEL, CCIM**  
 c 704 560 1192  
 zdaniel@mecacommercial.com

**KEVIN MITCHELL**  
 c 704 317 9245  
 kmitchell@mecacommercial.com

MECA Commercial Real Estate  
 2216 Monument Street  
 Charlotte, NC 28208  
 704 971 2000

**mecacommercial.com**

© 2024 Metro Realty, LLC. All rights reserved. Metro Realty, LLC fully supports the principles of the Fair Housing Act and the Equal Opportunity Act.  
 \*The land acreage and/or building square footage was obtained from the County's Geographical Information System or other electronic resources. For exact square footage and/or acreage, we recommend that prior to purchase, a prospective Buyer/Tenant obtain a boundary survey or have the building measured professionally.

