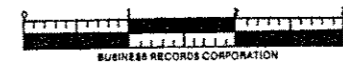
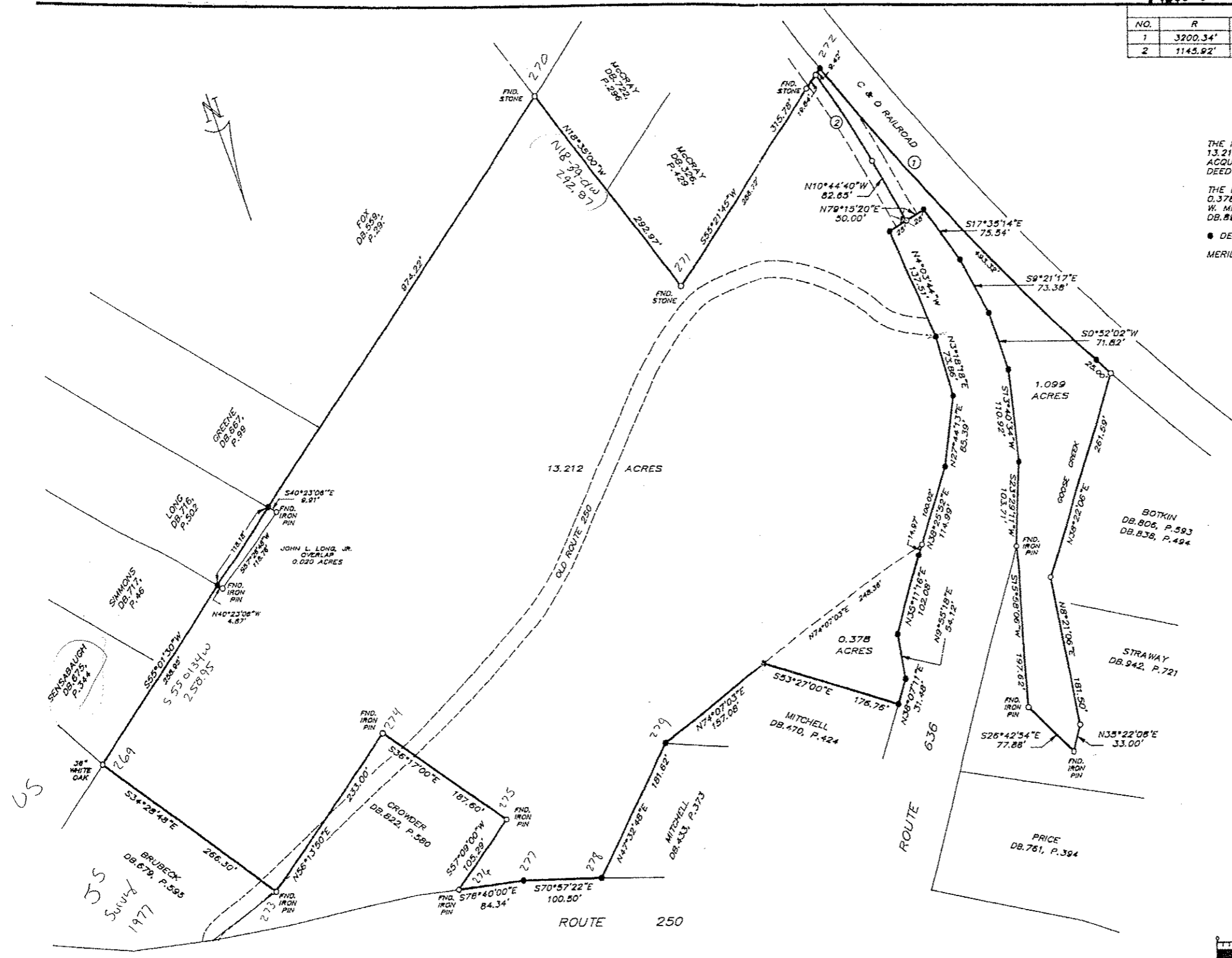


CURVE DATA					
NO.	R	Δ	ARC	CHD	CHD BRG
1	3200.34'	9°16'48"	516.32'	517.75'	N24°44'48"W
2	1145.92'	8°14'45"	124.92'	124.86'	N13°52'03"W

THE PARCELS SHOWN HEREON CONTAINING 13.212 ACRES AND 1.099 ACRES WERE ACQUIRED BY GEORGE W. MITCHELL BY DEED RECORDED IN DB.880, P.733.

THE PARCEL SHOWN HEREON CONTAINING 0.378 ACRES WAS ACQUIRED BY GEORGE W. MITCHELL BY DEED RECORDED IN DB.893, P.150.

● DENOTES IRON PIN SET
MERIDIAN FROM OLD ROUTE 250 PLANS.



PLAT SHOWING
 GEORGE W. MITCHELL PROPERTY
 WAYNE DISTRICT, AUGUSTA COUNTY, VIRGINIA
 SCALE 1" = 80' OCTOBER 12, 1988
 CLARK AND SHEFFER ASSOCIATES, P.C.
 FISHERSVILLE, VIRGINIA



US

BRUBECK
 DB. 679, P. 595
 FINS
 L91

JOHN L. LONG, JR.
 OVERLAP
 0.020 ACRES

CROWDER
 DB. 622, P. 580

MITCHELL
 DB. 470, P. 424

BOTKIN
 DB. 806, P. 593
 DB. 838, P. 494

STRAWAY
 DB. 942, P. 721

PRICE
 DB. 781, P. 394

ROUTE 250

ROUTE

ROUTE

13.212 ACRES

1.099 ACRES

0.378 ACRES

LONG
 DB. 716, P. 502

SIMMONS
 DB. 717, P. 146

REISBAUGH
 DB. 675, P. 344

38° WHITE OAK

266.30'

233.00'

187.60'

106.29'

84.34'

100.50'

181.82'

176.76'

31.49'

553°27'00"E

N74°07'03"E

N39°07'11"E

N38°07'11"E

N25°51'19"E

N48°25'52"E

N74°07'03"E

N102°08'11"E

N114°09'11"E

N114°09'11"E

N114°09'11"E

N114°09'11"E

N114°09'11"E

N114°09'11"E

N114°09'11"E

N114°09'11"E