

FOR LEASE

*Reduced Lease Rate*

PROPERTY DETAILS

240 N. 1200 E., Lehi, UT 84043

- Available: suite 102: 2,534 SF
- Lease rate: ~~\$22.00/SF~~ \$20.50/SF NNN
- NNN=\$7.25/SF
- High-end glass finishes
- Quick I-15 access
- Close to numerous restaurants and amenities

SURROUNDING TENANTS



LEHI MEADOWS SHOPPING CENTER

2025 DEMOS



EST. POPULATION

1 MILE » **13,772**
3 MILE » **80,897**
5 MILE » **176,880**



EST. HOUSEHOLDS

1 MILE » **4,411**
3 MILE » **24,425**
5 MILE » **51,057**



EST. AVERAGE HH INCOME

1 MILE » **\$130,267**
3 MILE » **\$141,772**
5 MILE » **\$156,648**

NEWMARK



MOUNTAIN WEST

SHAD WEBB

swebb@newmarkmw.com

direct 435.459.0212

[View Profile](#)

**FULL SERVICE
COMMERCIAL REAL ESTATE**
2015 West Grove Parkway, Suite J
Pleasant Grove, UT 84062
Office 385.233.9140
www.newmarkmw.com

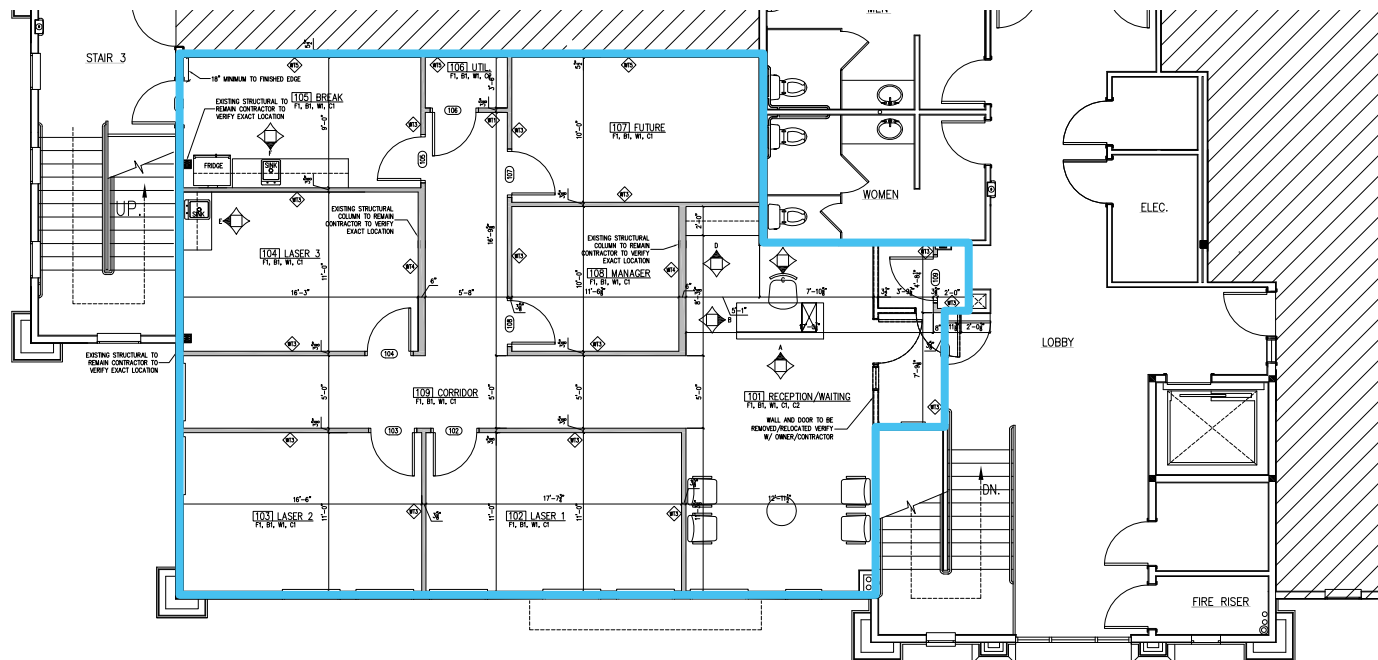
SHAD WEBB

swebb@newmarkmw.com

direct 435.459.0212

[View Profile](#)

SUITE 102



**FULL SERVICE
COMMERCIAL REAL ESTATE**

2015 West Grove Parkway, Suite J

Pleasant Grove, UT 84062

Office 385.233.9140

www.newmarkmw.com



NEWMARK

MOUNTAIN WEST

SHAD WEBB

swebb@newmarkmw.com

direct 435.459.0212

[View Profile](#)



**FULL SERVICE
COMMERCIAL REAL ESTATE**
2015 West Grove Parkway, Suite J
Pleasant Grove, UT 84062
Office 385.233.9140
www.newmarkmw.com



NEWMARK
MOUNTAIN WEST

SHAD WEBB
swebb@newmarkmw.com
direct 435.459.0212
[View Profile](#)

**FULL SERVICE
COMMERCIAL REAL ESTATE**
2015 West Grove Parkway, Suite J
Pleasant Grove, UT 84062
Office 385.233.9140
www.newmarkmw.com