

PULLMAN GATEWAY

SWC I-94 & 111th Street / Chicago, IL



PULLMAN GATEWAY



SITE FEATURES

- Pad site development located on the southwest quadrant of the I-94/ Bishop Ford Expressway and 111th Street
- Over 133k VPD passing by the site on I-94
- Highway signage on I-94 just north and south of the site
- Expansive on-site pylon signage
- Drive-thrus permitted and sites entitled

PULLMAN PARK

- Major nearby employers include Amazon, Method, SC Johnson, Gotham Greens, Whole Foods Distribution Center and the Chicago Police Department bringing more than 2,000 jobs to the area within the last several years
- More than 26,000 employees within 3 miles
- Pullman National Park attracts over 70,000 visitors annually

DEMOGRAPHICS WITHIN 3 MILE



125,053
Population



44,186
Households



\$56,779
Average
Household
Income



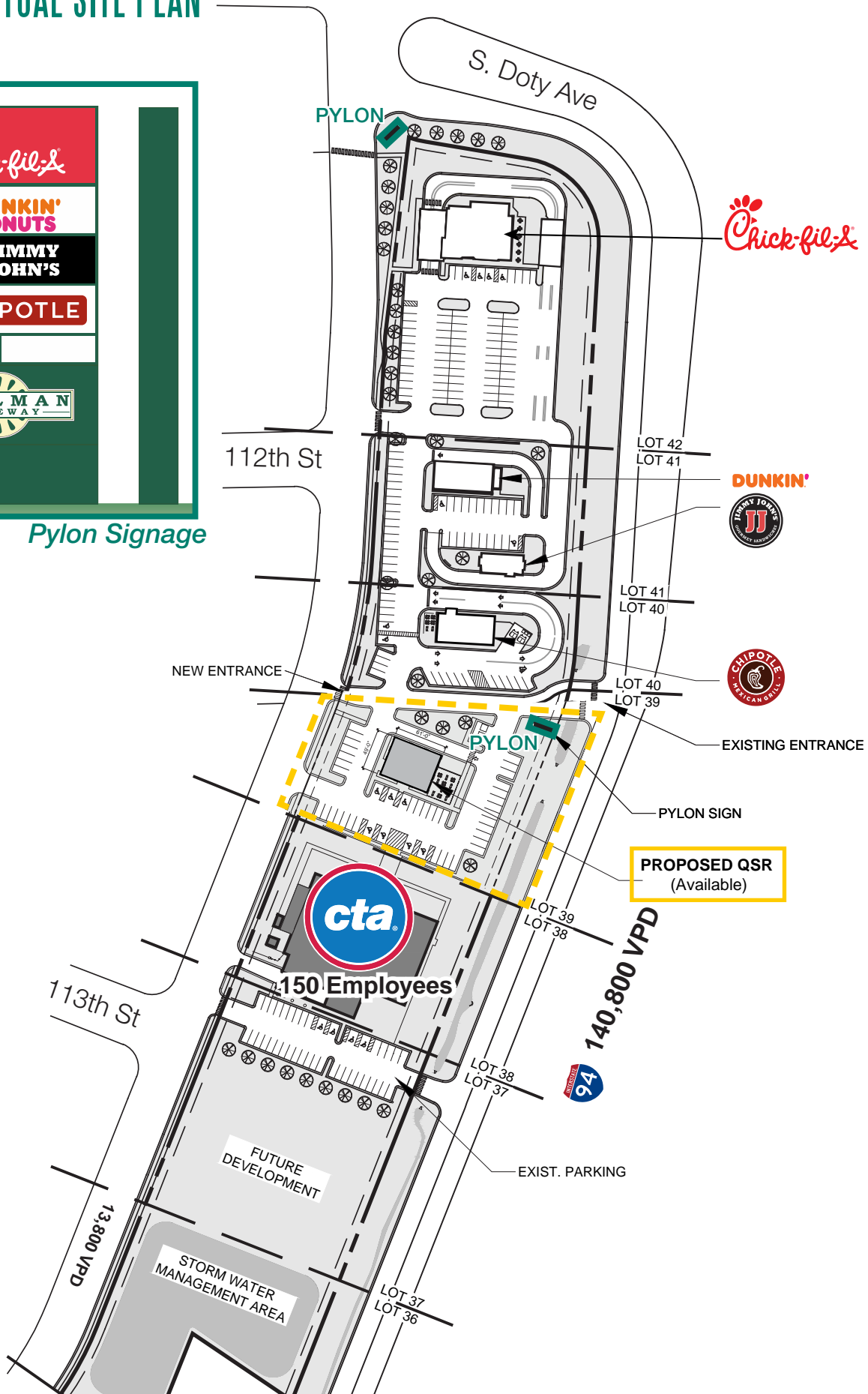
110,854
Daytime
Population

PULLMAN GATEWAY PAD SITES

CONCEPTUAL SITE PLAN

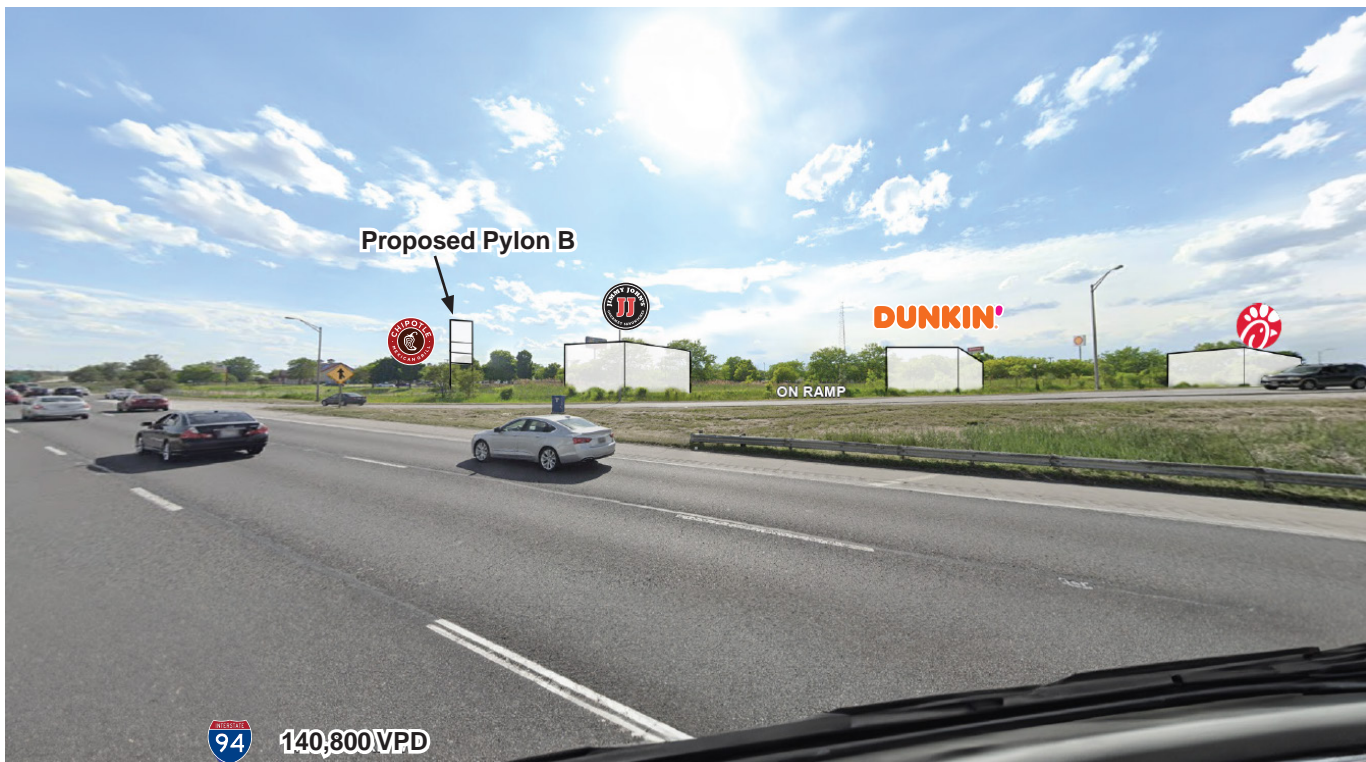


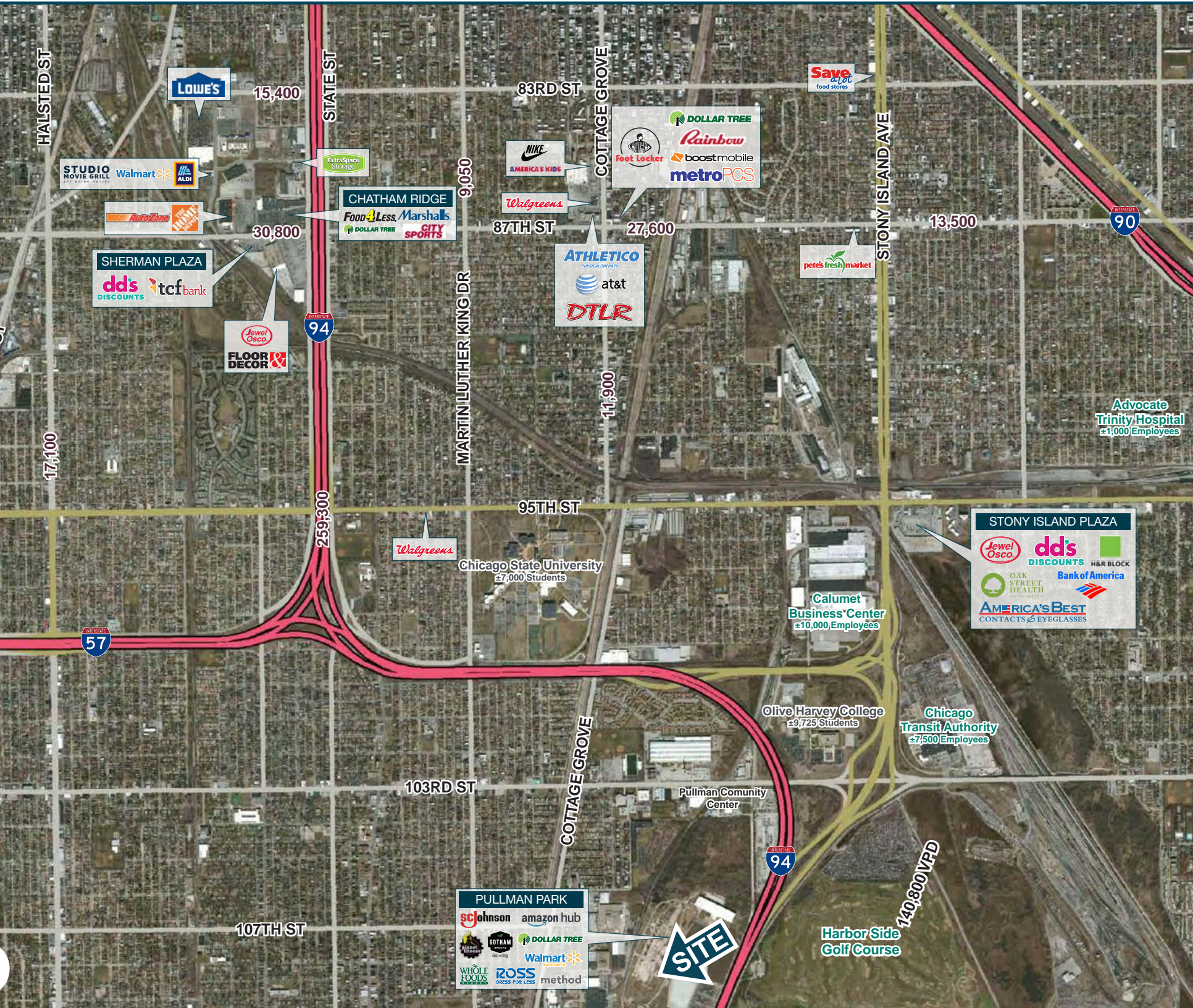
Pylon Signage



PULLMAN GATEWAY PAD SITES

CONCEPTUAL AERIALS





CONTACT

CAMPBELL WICKLAND

630.954.7236

CWickland@MidAmericaGrp.com

MARGET GRAHAM

630.954.7306

MGraham@MidAmericaGrp.com

DICK SPINELL

630.954.7364

DSpinell@MidAmericaGrp.com



MID-AMERICA®
Asset Management, Inc.

One Parkview Plaza, 9th Floor
Oakbrook Terrace, Illinois 60181
630.954.7300

MidAmericaGrp.com