

IDEAL FOR APPAREL, DESIGN, AND INDUSTRIAL USES



FOR LEASE

±16,000 SF - 26,000 SF
INDUSTRIAL WAREHOUSE

123 E. 35TH ST.
LOS ANGELES | CA

FOR MORE INFORMATION, CONTACT:

BRYAN ABAYAN
ASSOCIATE VICE PRESIDENT
P: 310.883.8476
babayan@daumcre.com
DRE License: #02005294

DAVID MUIR
EXECUTIVE VICE PRESIDENT
P: 213.270.2244
dmuir@daumcre.com
DRE License: #01210653

PROPERTY HIGHLIGHTS



±16,000 SF -26,000 SF
Industrial Warehouse



Ideal for Storage
& Distribution Use



One (1)
Dock-High Loading Door



\$1.10 PSF G
Asking Rate

Although all information is furnished regarding for sale, rental or financing from sources deemed reliable, such information has not been verified and no express representation is made nor is any to be implied as to the accuracy thereof, and it is submitted subject to errors, omissions, changes of price, rental or other conditions, prior sale, lease or financing, or withdrawal without notice. D/AQ Corp. # 01129558

DAUM
COMMERCIAL REAL ESTATE SERVICES

FOR LEASE

±16,000 SF - 26,000 SF INDUSTRIAL WAREHOUSE

123 E. 35TH ST.
LOS ANGELES | CA

PROPERTY HIGHLIGHTS

- Lease Rate: \$1.10 PSF G
- 22' Clear Height
- Sprinklered
- One (1) DH Loading Door
- On-Site Parking
- Tilt-Up Construction
- **±500-10,000 SF Offices**
- **Excellent Office Layout**
- **Air-Conditioned Offices**
- Executive Kitchen & Break Room
- 2-5 Restrooms
- On-Site Gated Secure Parking
- M1 Zoning
- Ideal for Warehouse or Distribution Use
- Available for Possession Now
- 3-5 Years Lease Term
- Excellent Central Location With Quick Access To DTLA, USC, Vernon, Arts District, Garment District, And The 10 / 5 / 60 / 710 / 101 / 110 **Freeways**

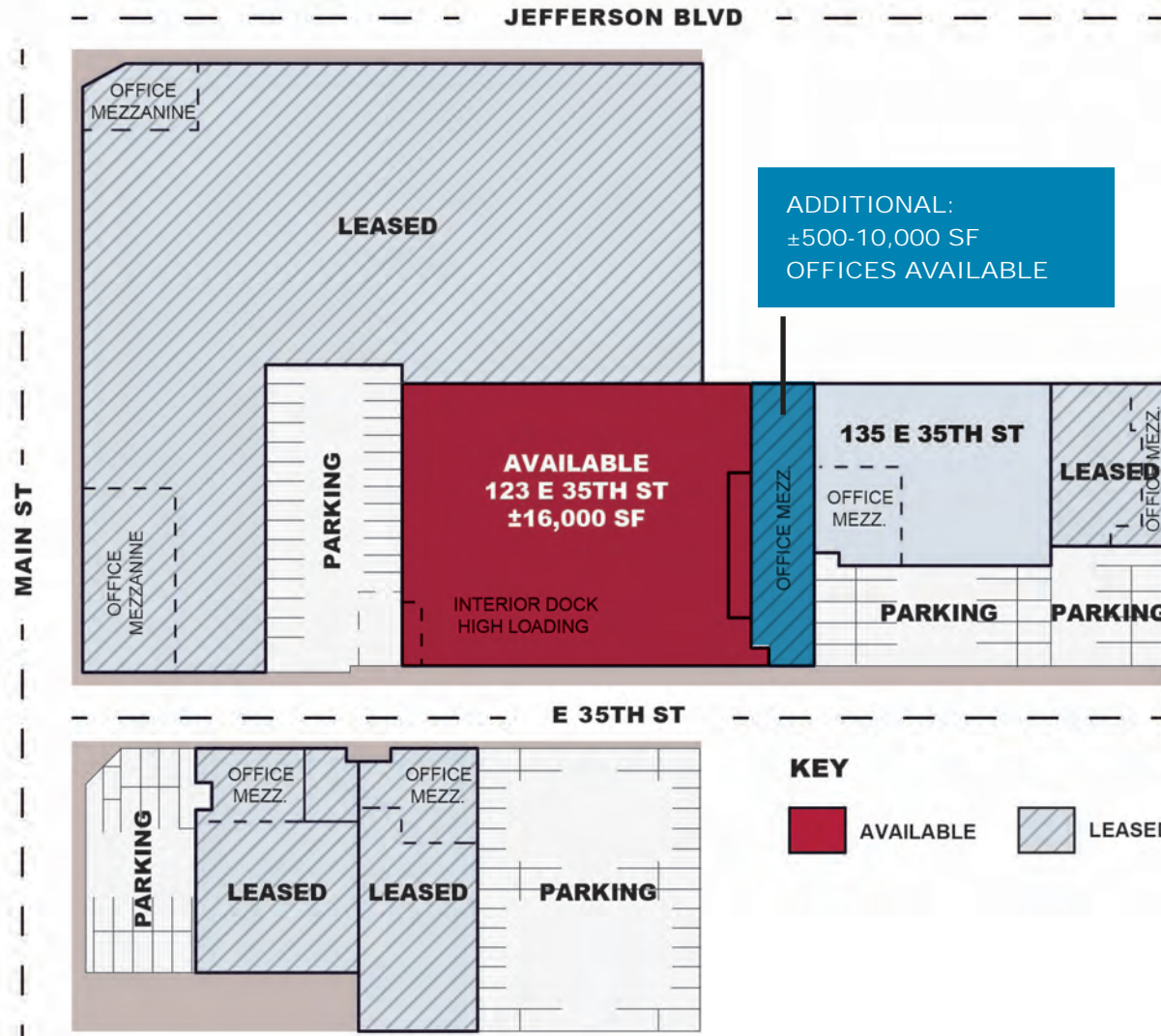


Although all information is furnished regarding for sale, rental or financing from sources deemed reliable, such information has not been verified and no express representation is made nor is any to be implied as to the accuracy thereof, and it is submitted subject to errors, omissions, changes of price, rental or other conditions, prior sale, lease or financing, or withdrawal without notice. D/AQ Corp. # 01129558

FOR LEASE

±16,000 SF - 26,000 SF INDUSTRIAL WAREHOUSE

123 E. 35TH ST.
LOS ANGELES | CA
SITE PLAN



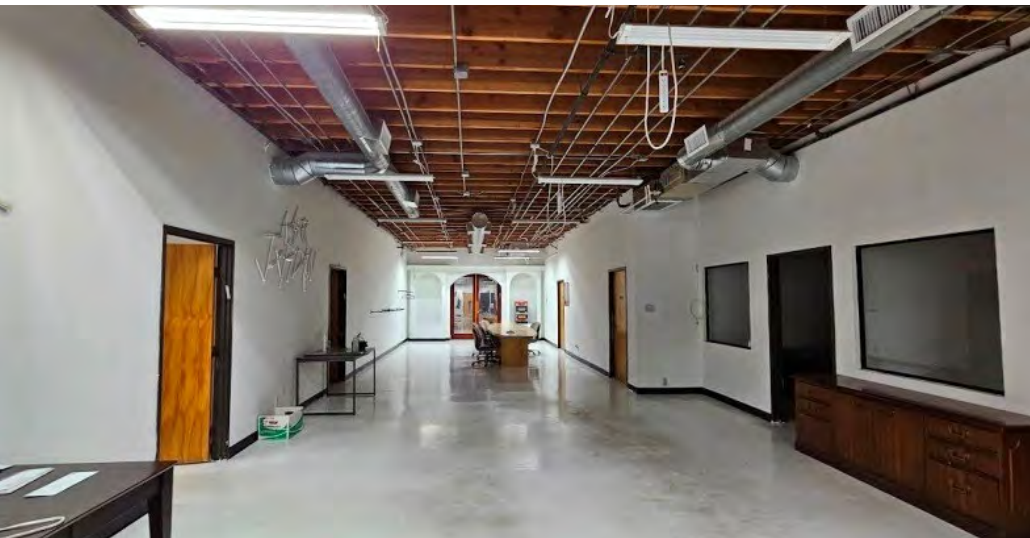
*NOT TO SCALE

Although all information is furnished regarding for sale, rental or financing from sources deemed reliable, such information has not been verified and no express representation is made nor is any to be implied as to the accuracy thereof, and it is submitted subject to errors, omissions, changes of price, rental or other conditions, prior sale, lease or financing, or withdrawal without notice. D/AQ Corp. # 01129558

FOR LEASE

±16,000 SF - 26,000 SF INDUSTRIAL WAREHOUSE

123 E. 35TH ST.
LOS ANGELES | CA
PHOTOS



Although all information is furnished regarding for sale, rental or financing from sources deemed reliable, such information has not been verified and no express representation is made nor is any to be implied as to the accuracy thereof, and it is submitted subject to errors, omissions, changes of price, rental or other conditions, prior sale, lease or financing, or withdrawal without notice. D/AQ Corp. # 01129558

FOR LEASE

±16,000 SF - 26,000 SF INDUSTRIAL WAREHOUSE

123 E. 35TH ST.
LOS ANGELES | CA
AMENITIES MAP



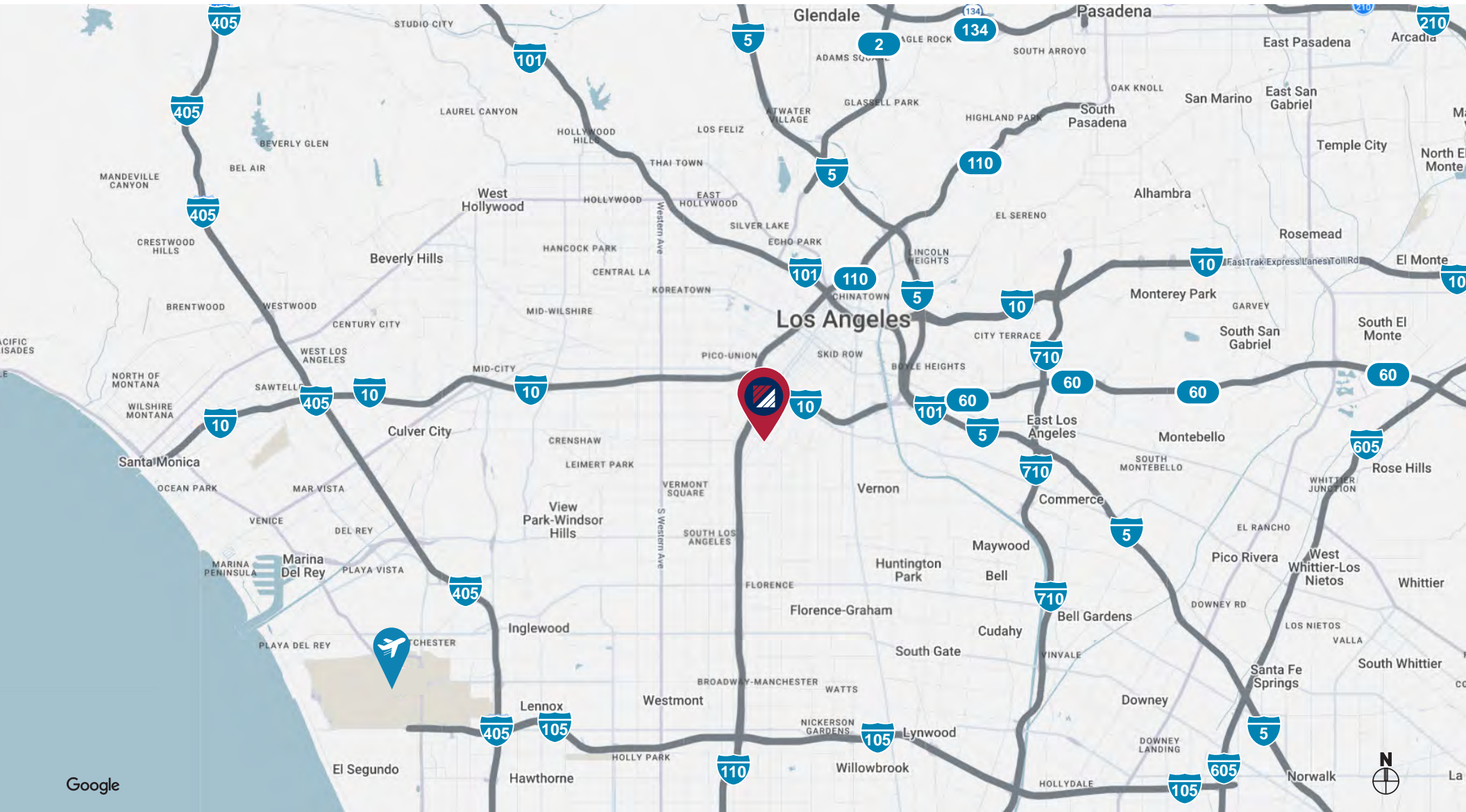
Although all information is furnished regarding for sale, rental or financing from sources deemed reliable, such information has not been verified and no express representation is made nor is any to be implied as to the accuracy thereof, and it is submitted subject to errors, omissions, changes of price, rental or other conditions, prior sale, lease or financing, or withdrawal without notice. D/AQ Corp. # 01129558



FOR LEASE

±16,000 SF - 26,000 SF INDUSTRIAL WAREHOUSE

123 E. 35TH ST.
LOS ANGELES | CA
LOCATION MAP



Google

Although all information is furnished regarding for sale, rental or financing from sources deemed reliable, such information has not been verified and no express representation is made nor is any to be implied as to the accuracy thereof, and it is submitted subject to errors, omissions, changes of price, rental or other conditions, prior sale, lease or financing, or withdrawal without notice. D/AQ Corp. # 01129558

