

5.17 ACRES
LAND



FOR SALE



12 Mile & Northwestern Hwy

Southfield, Michigan 48033

Property Highlights

- Located Within One of the Highest-Traffic Corridors in the County, with Combined Traffic Counts Approaching **225,000 vehicles per day** Along Telegraph Road, 12 Mile Road, and Northwestern Highway.
- Close Proximity to the Nearby **Proposed Costco**
- **5.17 Acres** Available
- Zoned **B-3 General Business**
- **370' of Frontage** on Northwestern Hwy and **200' of Frontage** on 12 Mile Rd
- Access to both **Northwestern Hwy** and **12 Mile Rd**



NAI Farbman
Commercial Real Estate Services, Worldwide.

www.naifarbman.com

Ron Goldstone
Executive Vice President | 248.351.4371
goldstone@farbman.com

Jake Wiseman
Sales Associate | 248.351.4382
wiseman@farbman.com

NO WARRANTY, EXPRESS OR IMPLIED, IS MADE AS TO THE ACCURACY OF THE INFORMATION CONTAINED HEREIN. THIS INFORMATION IS SUBMITTED SUBJECT TO ERRORS, OMISSIONS, CHANGE OF PRICE, RENTAL OR OTHER CONDITIONS, WITHDRAWAL WITHOUT NOTICE, AND IS SUBJECT TO ANY SPECIAL LISTING CONDITIONS IMPOSED BY OUR PRINCIPALS. COOPERATING BROKERS, BUYERS, TENANTS AND OTHER PARTIES WHO RECEIVE THIS DOCUMENT SHOULD NOT RELY ON IT, BUT SHOULD USE IT AS A STARTING POINT OF ANALYSIS, AND SHOULD INDEPENDENTLY CONFIRM THE ACCURACY OF THE INFORMATION CONTAINED HEREIN THROUGH A DUE DILIGENCE REVIEW OF THE BOOKS, RECORDS, FILES AND DOCUMENTS THAT CONSTITUTE RELIABLE SOURCES OF THE INFORMATION DESCRIBED HEREIN. LOGOS ARE FOR IDENTIFICATION PURPOSES ONLY AND MAY BE TRADEMARKS OF THEIR RESPECTIVE COMPANIES. NAI Farbman, INC. CA BRE LIC. #01990696.

5.17 ACRES
LAND



FOR SALE



NAI Farbman

Commercial Real Estate Services, Worldwide.

www.naifarbman.com

Ron Goldstone

Executive Vice President | 248.351.4371
goldstone@farbman.com

Jake Wiseman

Sales Associate | 248.351.4382
wiseman@farbman.com

NO WARRANTY, EXPRESS OR IMPLIED, IS MADE AS TO THE ACCURACY OF THE INFORMATION CONTAINED HEREIN. THIS INFORMATION IS SUBMITTED SUBJECT TO ERRORS, OMISSIONS, CHANGE OF PRICE, RENTAL OR OTHER CONDITIONS, WITHDRAWAL WITHOUT NOTICE, AND IS SUBJECT TO ANY SPECIAL LISTING CONDITIONS IMPOSED BY OUR PRINCIPALS, COOPERATING BROKERS, BUYERS, TENANTS AND OTHER PARTIES WHO RECEIVE THIS DOCUMENT SHOULD NOT RELY ON IT, BUT SHOULD USE IT AS A STARTING POINT OF ANALYSIS, AND SHOULD INDEPENDENTLY CONFIRM THE ACCURACY OF THE INFORMATION CONTAINED HEREIN THROUGH A DUE DILIGENCE REVIEW OF THE BOOKS, RECORDS, FILES AND DOCUMENTS THAT CONSTITUTE RELIABLE SOURCES OF THE INFORMATION DESCRIBED HEREIN. LOGOS ARE FOR IDENTIFICATION PURPOSES ONLY AND MAY BE TRADEMARKS OF THEIR RESPECTIVE COMPANIES. NAI Farbman, INC. CA BRE LIC. #01990696.

5.17 ACRES
LAND



FOR SALE



NAI Farbman

Commercial Real Estate Services, Worldwide.

www.naifarbman.com

Ron Goldstone

Executive Vice President | 248.351.4371
goldstone@farbman.com

Jake Wiseman

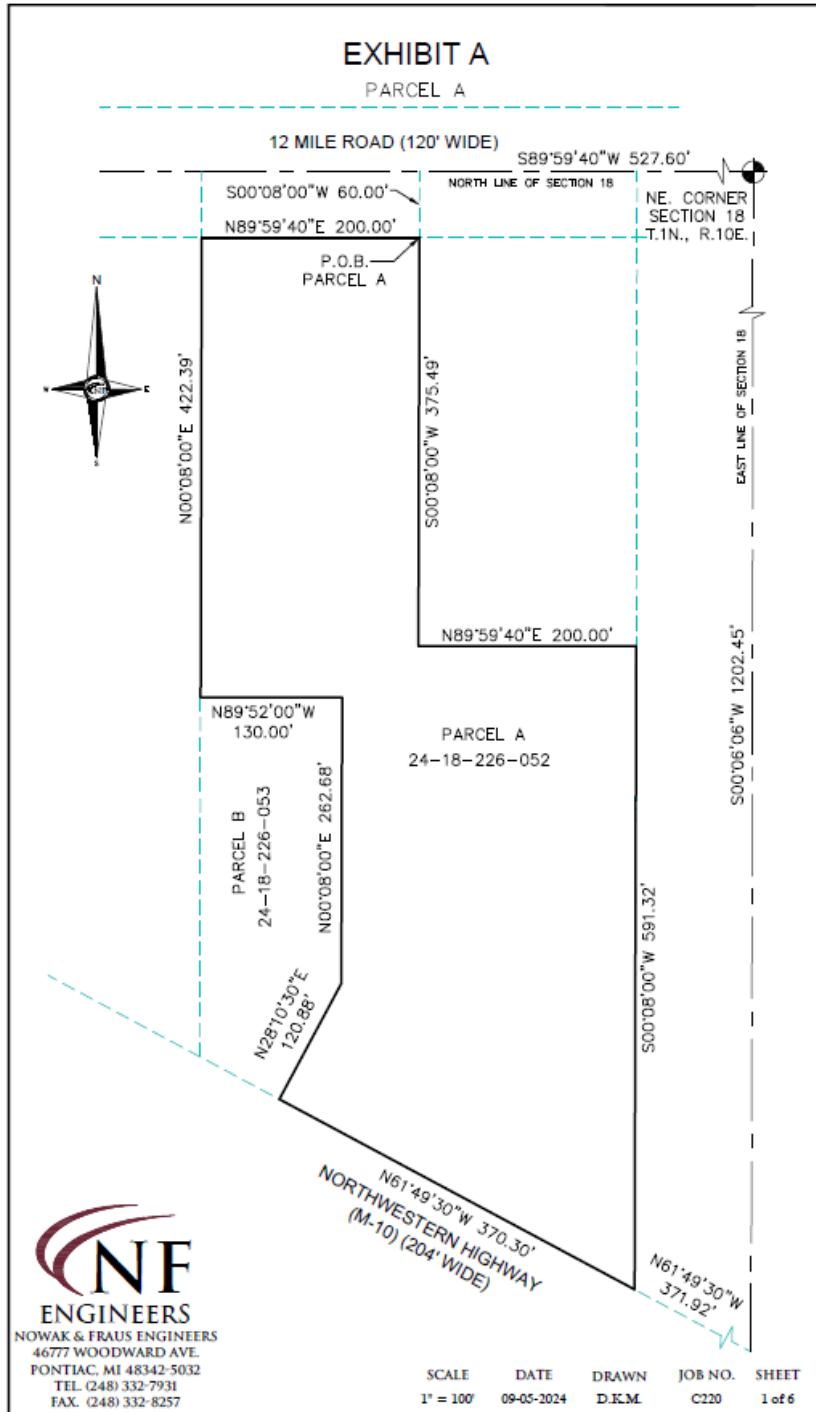
Sales Associate | 248.351.4382
wiseman@farbman.com

NO WARRANTY, EXPRESS OR IMPLIED, IS MADE AS TO THE ACCURACY OF THE INFORMATION CONTAINED HEREIN. THIS INFORMATION IS SUBMITTED SUBJECT TO ERRORS, OMISSIONS, CHANGE OF PRICE, RENTAL OR OTHER CONDITIONS, WITHDRAWAL WITHOUT NOTICE, AND IS SUBJECT TO ANY SPECIAL LISTING CONDITIONS IMPOSED BY OUR PRINCIPALS, COOPERATING BROKERS, BUYERS, TENANTS AND OTHER PARTIES WHO RECEIVE THIS DOCUMENT SHOULD NOT RELY ON IT, BUT SHOULD USE IT AS A STARTING POINT OF ANALYSIS, AND SHOULD INDEPENDENTLY CONFIRM THE ACCURACY OF THE INFORMATION CONTAINED HEREIN THROUGH A DUE DILIGENCE REVIEW OF THE BOOKS, RECORDS, FILES AND DOCUMENTS THAT CONSTITUTE RELIABLE SOURCES OF THE INFORMATION DESCRIBED HEREIN. LOGOS ARE FOR IDENTIFICATION PURPOSES ONLY AND MAY BE TRADEMARKS OF THEIR RESPECTIVE COMPANIES. NAI Farbman, INC. CA BRE LIC. #01990696.

5.17 ACRES
LAND



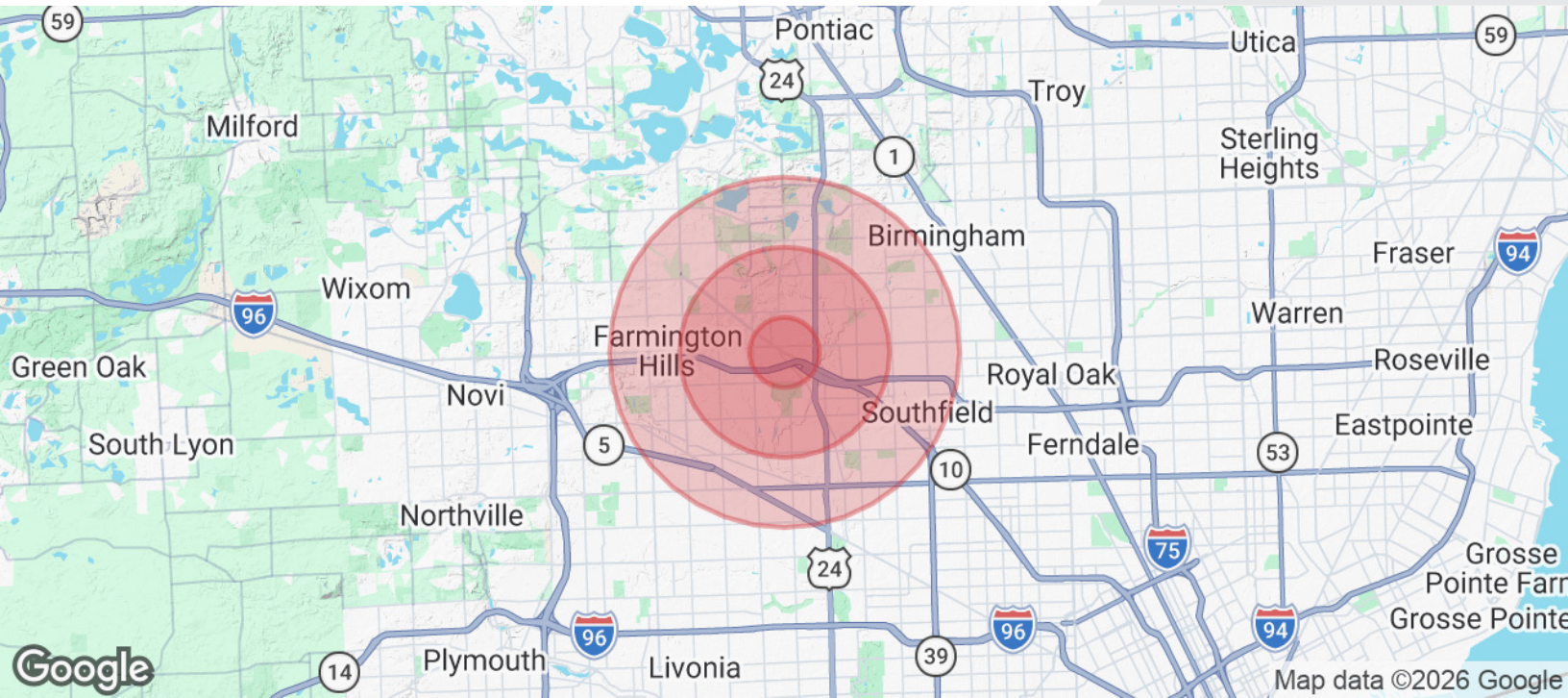
FOR SALE



5.17 ACRES LAND



FOR SALE



POPULATION

	1 MILE	3 MILES	5 MILES
Total Population	8,156	64,394	238,717
Average Age	51.8	42.9	40.9
Average Age (Male)	44.3	40.3	38.9
Average Age (Female)	52.6	44.0	42.0

HOUSEHOLDS & INCOME

	1 MILE	3 MILES	5 MILES
Total Households	4,468	28,622	96,143
# of Persons per HH	1.8	2.2	2.5
Average HH Income	\$55,690	\$75,786	\$77,122
Average House Value	\$167,209	\$205,386	\$216,383

2020 American Community Survey (ACS)



Commercial Real Estate Services, Worldwide.

www.naifarbman.com

Ron Goldstone

Executive Vice President | 248.351.4371
goldstone@farbman.com

Jake Wiseman

Sales Associate | 248.351.4382
wiseman@farbman.com

NO WARRANTY, EXPRESS OR IMPLIED, IS MADE AS TO THE ACCURACY OF THE INFORMATION CONTAINED HEREIN. THIS INFORMATION IS SUBMITTED SUBJECT TO ERRORS, OMISSIONS, CHANGE OF PRICE, RENTAL OR OTHER CONDITIONS, WITHDRAWAL WITHOUT NOTICE, AND IS SUBJECT TO ANY SPECIAL LISTING CONDITIONS IMPOSED BY OUR PRINCIPALS, COOPERATING BROKERS, BUYERS, TENANTS AND OTHER PARTIES WHO RECEIVE THIS DOCUMENT SHOULD NOT RELY ON IT, BUT SHOULD USE IT AS A STARTING POINT OF ANALYSIS, AND SHOULD INDEPENDENTLY CONFIRM THE ACCURACY OF THE INFORMATION CONTAINED HEREIN THROUGH A DUE DILIGENCE REVIEW OF THE BOOKS, RECORDS, FILES AND DOCUMENTS THAT CONSTITUTE RELIABLE SOURCES OF THE INFORMATION DESCRIBED HEREIN. LOGOS ARE FOR IDENTIFICATION PURPOSES ONLY AND MAY BE TRADEMARKS OF THEIR RESPECTIVE COMPANIES. NAI Farbman, INC. CA BRE LIC. #01990696.