

FOR LEASE

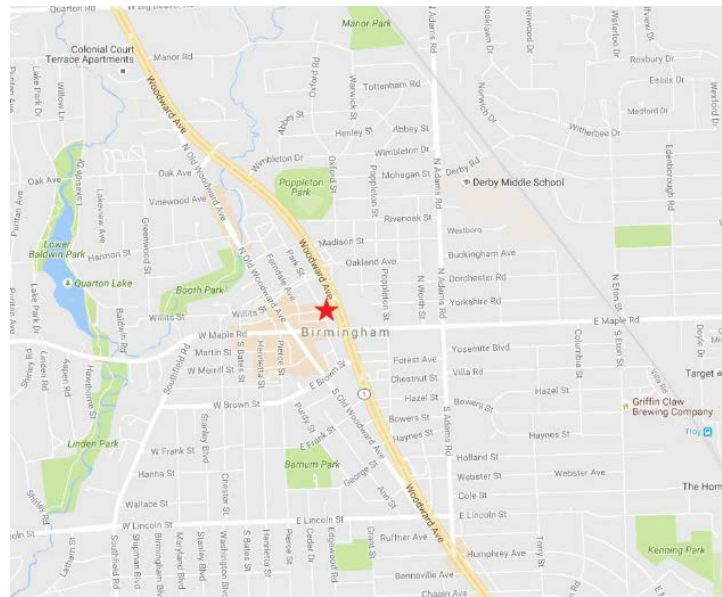
# 300 Park Street

Birmingham, Michigan



## Property Highlights

- Approximately 1,384 – 12,000 SF office space available
- One of Birmingham’s most prestigious buildings located in the heart of downtown
- Recent lobby and common area renovations
- High visibility with possible Woodward Avenue signage rights
- Covered parking available in addition to municipal parking
- 57,244 total building square feet
- **Asking Rate:** \$31.50/SF Gross plus electric



Available	Total SF
Suite 230	1,496
Suite 370	4,148
Suite 380	2,445
Third Floor Combined	Approx. 12,000 SF contiguous
Suite 400	4,429
Suite 410	2,483

**Garrett Keais**  
 Managing Principal  
 +1 248 358 6112  
[garrett.keais@cushwake.com](mailto:garrett.keais@cushwake.com)

**Jarrold Champine**  
 Senior Associate  
 +1 248 358 6111  
[jarrold.champine@cushwake.com](mailto:jarrold.champine@cushwake.com)

**Mike Spisak**  
 Associate  
 +1 248 358 6116  
[mike.spisak@cushwake.com](mailto:mike.spisak@cushwake.com)

27777 Franklin Road, Suite 1050  
 Southfield, MI 48034  
 +1 248 358 6100  
[cushmanwakefield.com](http://cushmanwakefield.com)

FOR LEASE

300 Park Street

Birmingham, Michigan



FOR LEASE

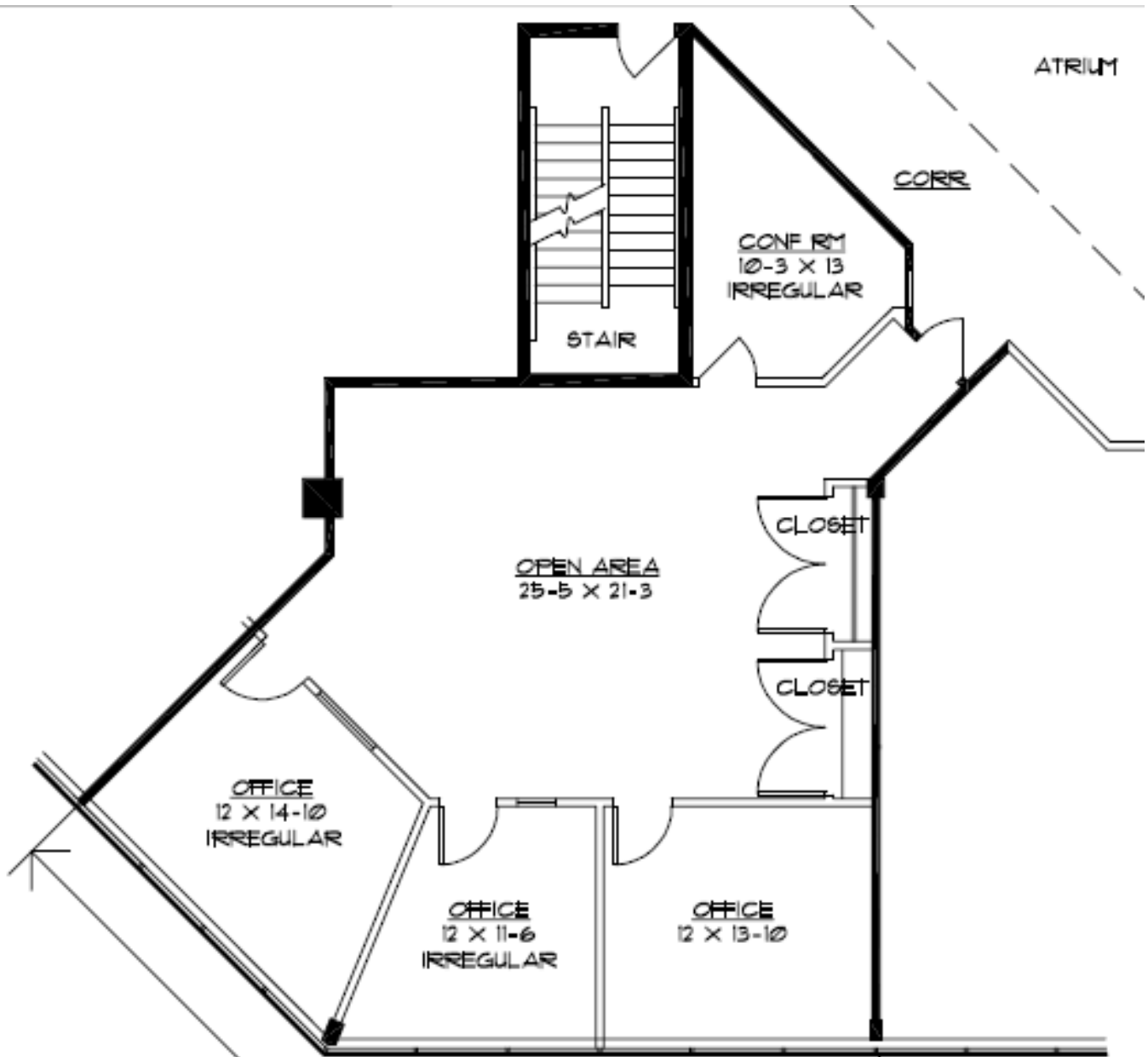
# 300 Park Street

Birmingham, Michigan



Suite 230

1,496 RSF



AVAILABLE FOR LEASE

SUITE 230

1,312 U.S.F.

FOR LEASE

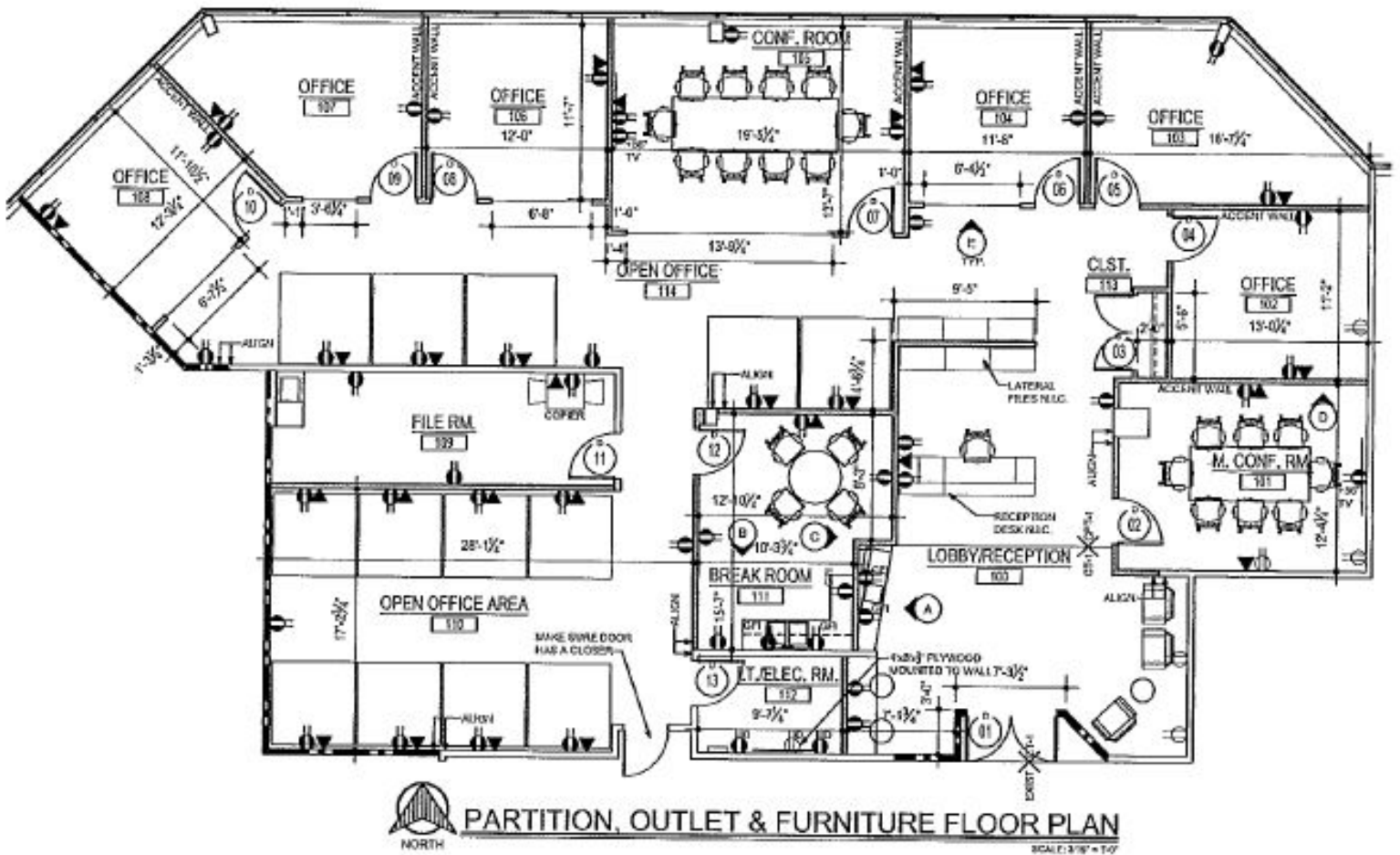
300 Park Street

Birmingham, Michigan



Suite 370

4,148 RSF



FOR LEASE

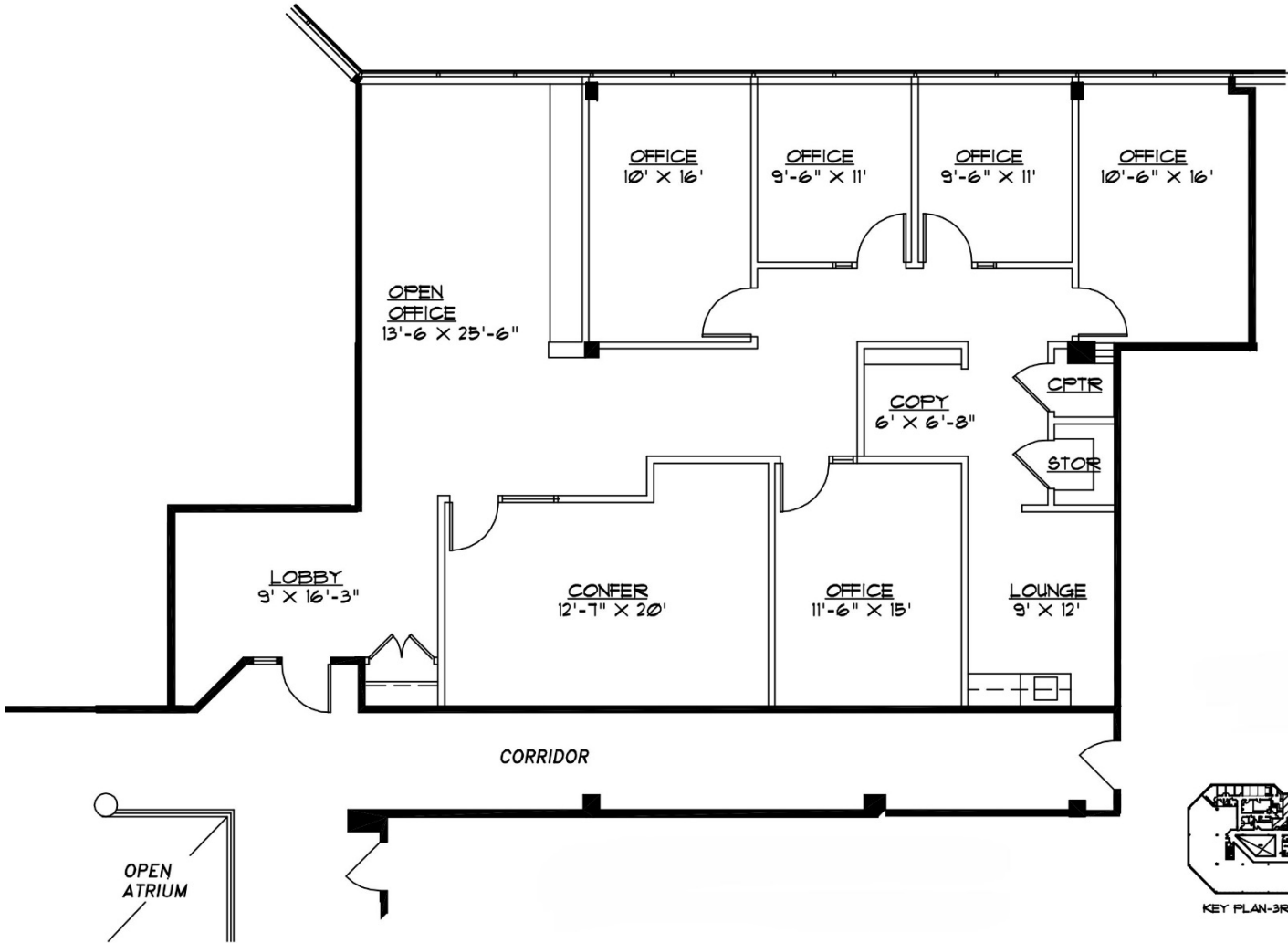
# 300 Park Street

Birmingham, Michigan



Suite 380

2,445 RSF



FOR LEASE

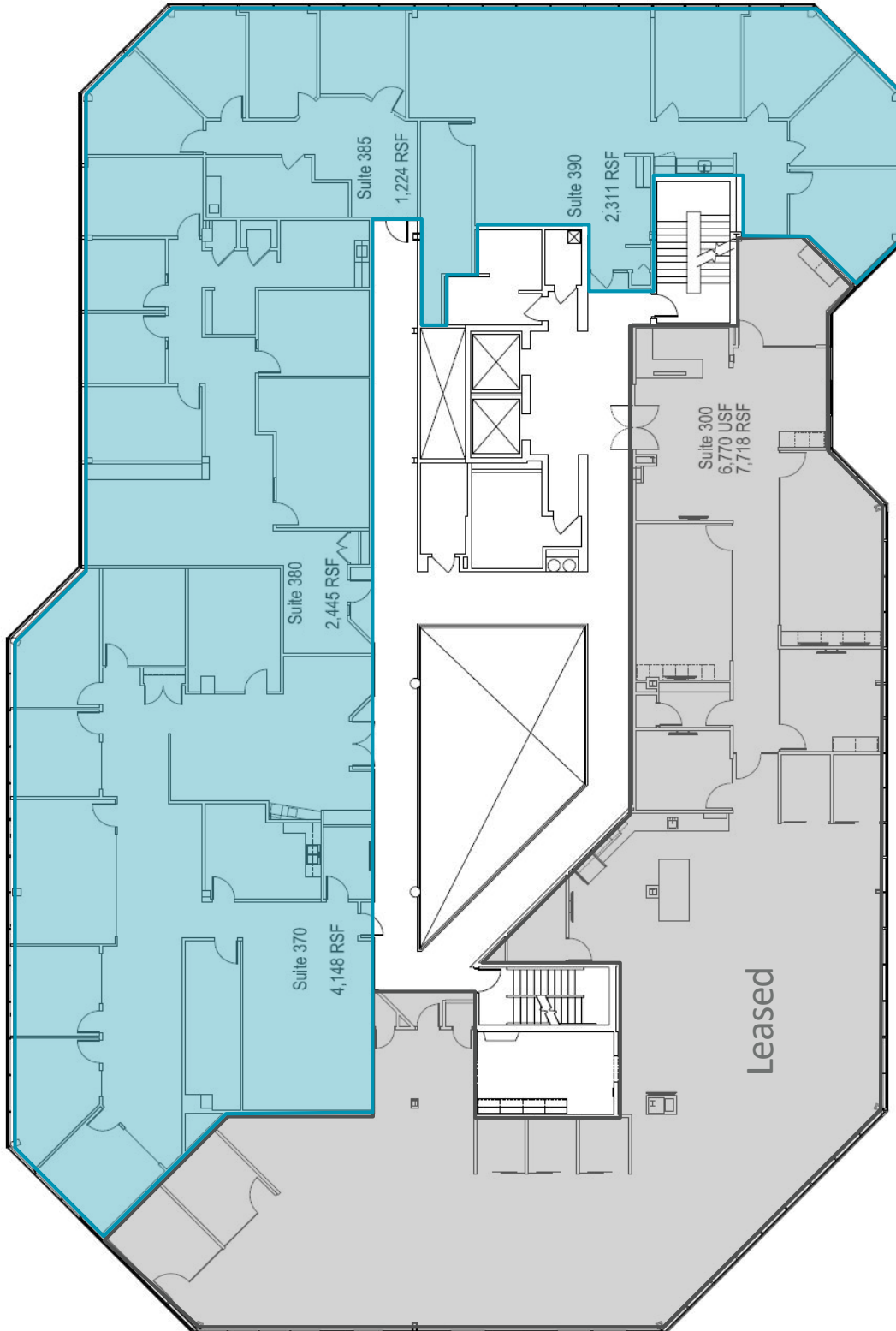
# 300 Park Street

Birmingham, Michigan



Third Floor

Up to approx. 12,000 SF



FOR LEASE

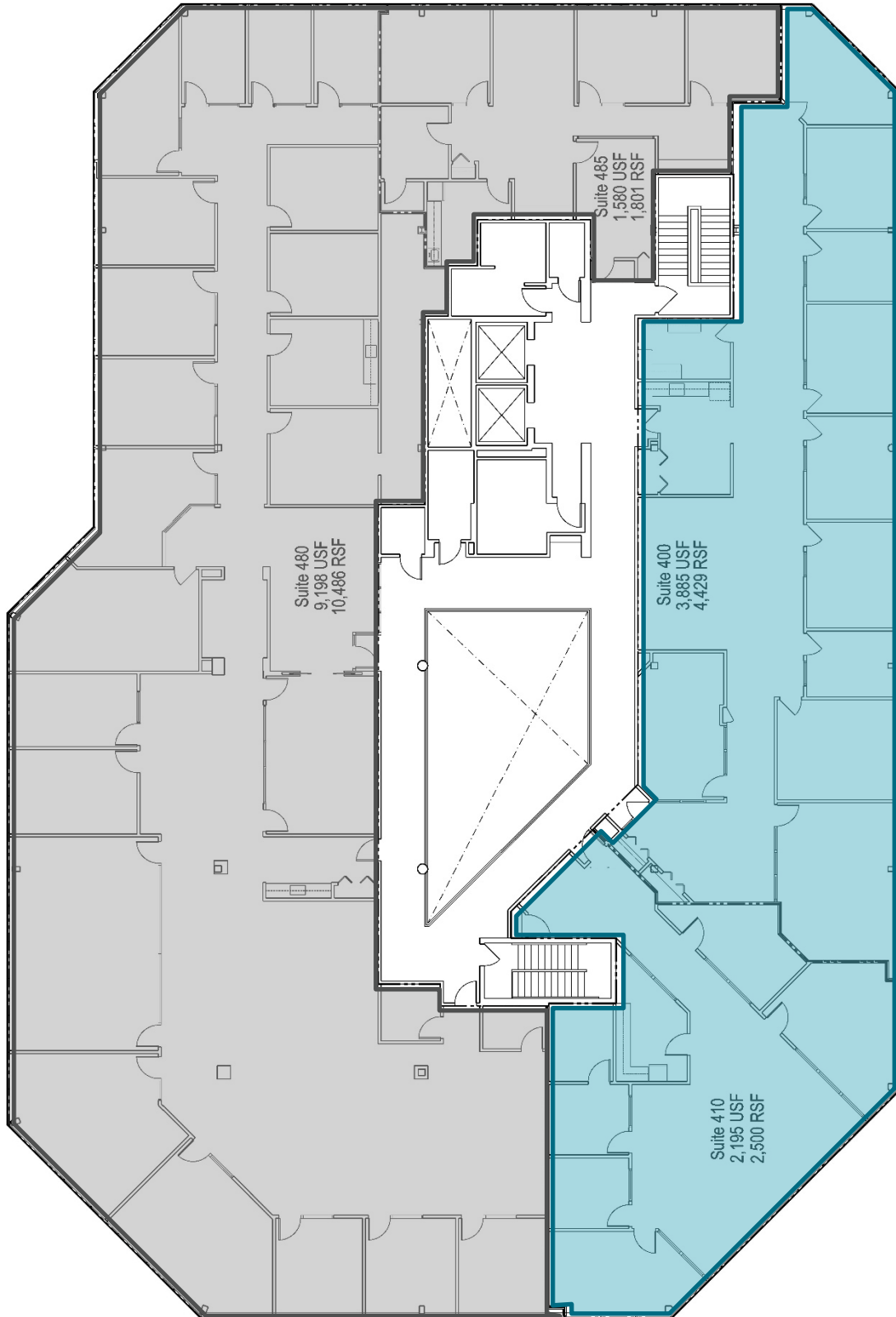
# 300 Park Street

Birmingham, Michigan



Fourth Floor

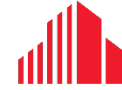
Up to approx. 6,929 SF



FOR LEASE

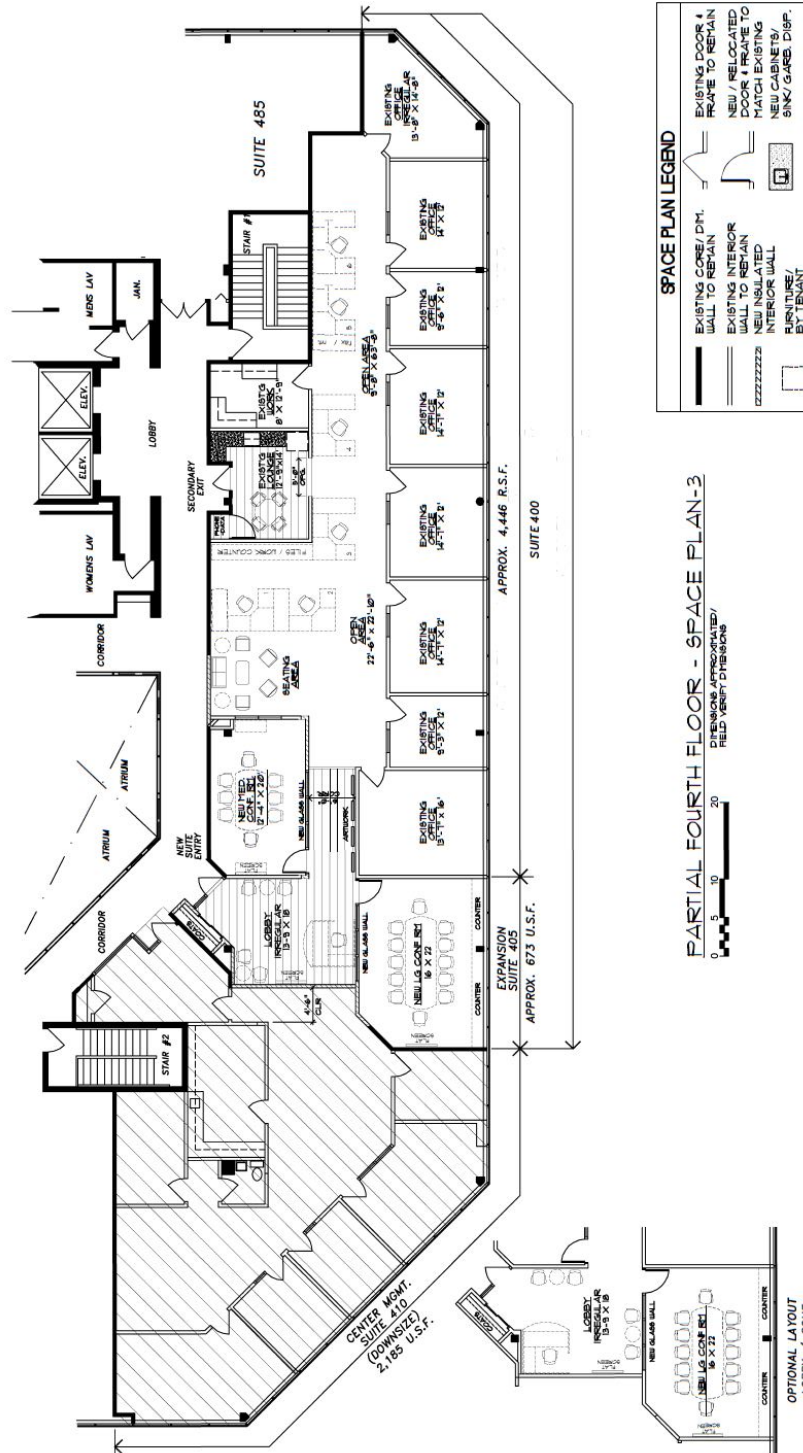
# 300 Park Street

Birmingham, Michigan



## CUSHMAN & WAKEFIELD

Suite 400  
4,429 RSF



**Garrett Keais**  
 Managing Principal  
 +1 248 358 6112  
[garrett.keais@cushwake.com](mailto:garrett.keais@cushwake.com)

**Jarrod Champine**  
 Senior Associate  
 +1 248 358 6111  
[jarrod.champine@cushwake.com](mailto:jarrod.champine@cushwake.com)

**Mike Spisak**  
 Associate  
 +1 248 358 6116  
[mike.spisak@cushwake.com](mailto:mike.spisak@cushwake.com)

27777 Franklin Road, Suite 1050  
 Southfield, MI 48034  
 +1 248 358 6100  
[cushmanwakefield.com](http://cushmanwakefield.com)



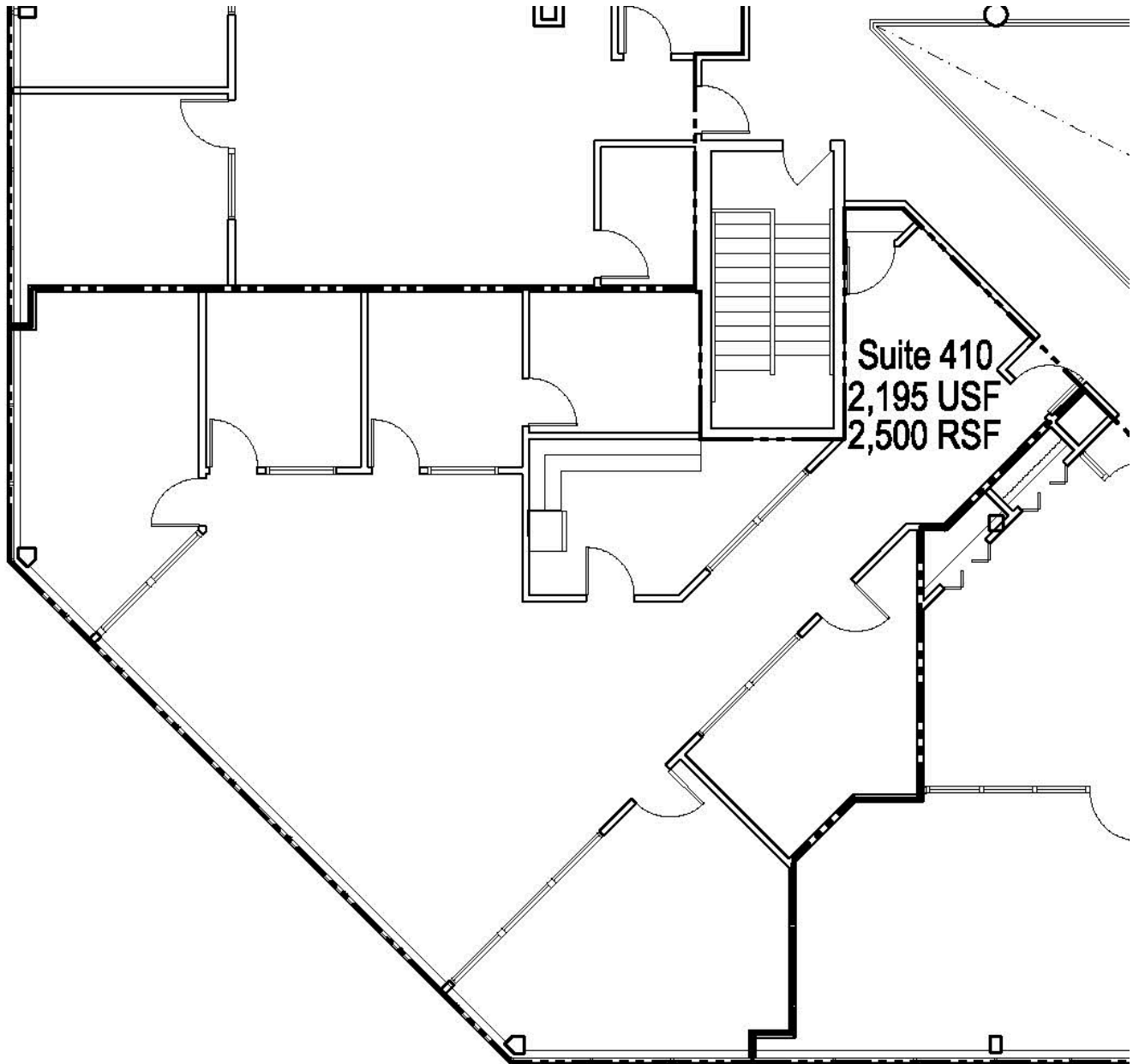
FOR LEASE

# 300 Park Street

Birmingham, Michigan



Suite 410  
2,500 RSF



**Garrett Keais**  
Managing Principal  
+1 248 358 6112  
[garrett.keais@cushwake.com](mailto:garrett.keais@cushwake.com)

**Jarrold Champine**  
Senior Associate  
+1 248 358 6111  
[jarrold.champine@cushwake.com](mailto:jarrold.champine@cushwake.com)

**Mike Spisak**  
Associate  
+1 248 358 6116  
[mike.spisak@cushwake.com](mailto:mike.spisak@cushwake.com)

2777 Franklin Road, Suite 1050  
Southfield, MI 48034  
+1 248 358 6100  
[cushmanwakefield.com](http://cushmanwakefield.com)