



## CREATIVE SPACE FOR LEASE

# First English Evangelical Lutheran Church

1605 Monument Avenue | Richmond, VA



CREATIVE  
OFFICE SPACE,  
PRIVATE SCHOOL  
OR DAYCARE  
AVAILABLE

## Contact Us

**REBECCA BARRICKLOW**

SENIOR VICE PRESIDENT  
M: 804.796.0500 | C: 804.399.4762  
rbarricklow@rangecommercial.com

7200 Glen Forest Drive, Suite 100  
Richmond, VA 23226

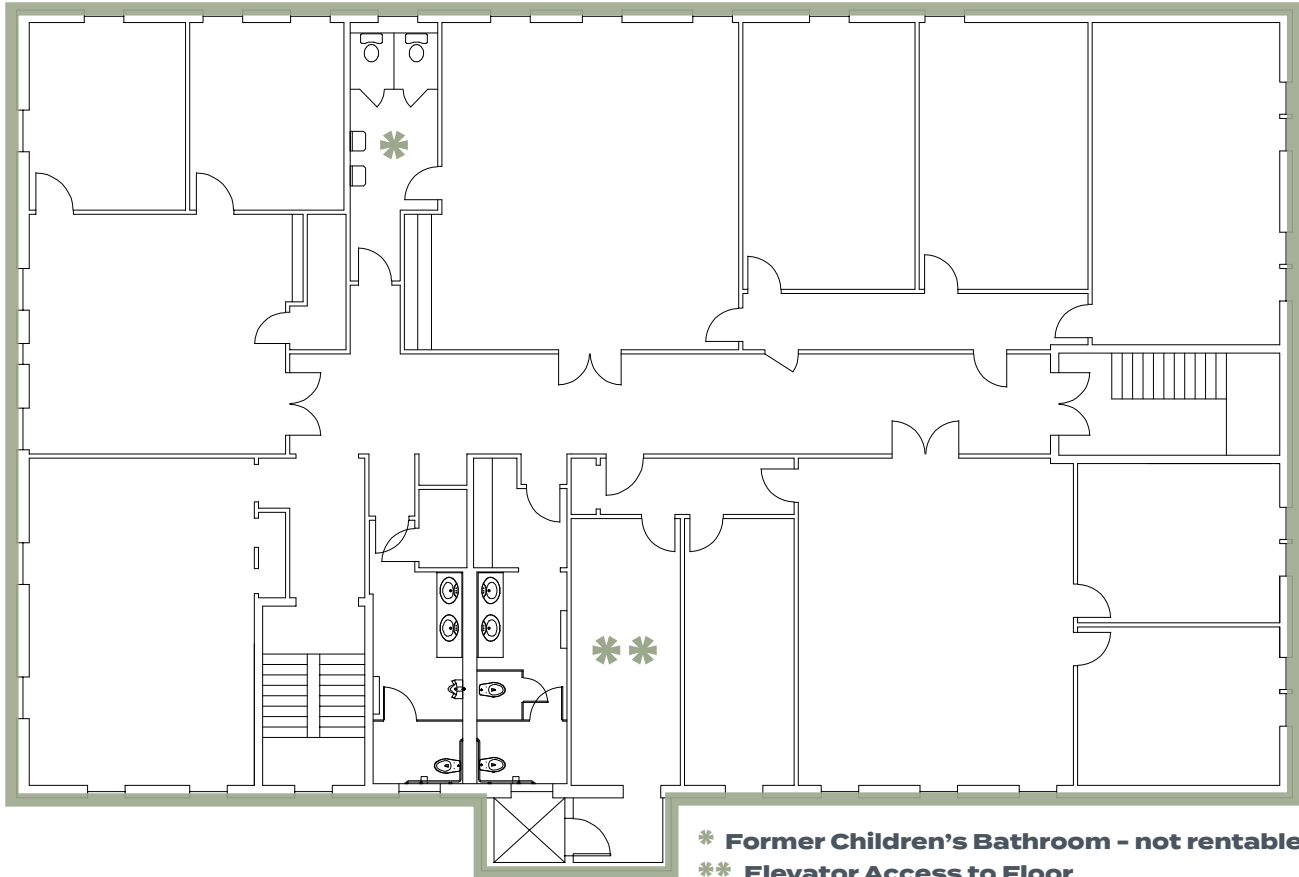
## BUILDING AMENITIES

- Convenient location with street and onsite parking available
- Flexible lease terms
- Entire third floor available; up to 6,500 square feet
- Great for individual office suites or full floor user
- \$16.00 per square foot, full-service

Copyright ©2025 Range Commercial Partners. Information herein has been obtained from sources deemed reliable, however its accuracy cannot be guaranteed. The user is required to conduct their own due diligence and verification.

CREATIVE SPACE FOR LEASE | 1605 MONUMENT AVENUE

## 3rd Floor Available Up to 6,500 SF



\* Typical Example of Current Condition



\* Rear of Building - Main Entrance to Space



CREATIVE SPACE FOR LEASE | 1605 MONUMENT AVENUE

# AREA MAP



Contact Us:

REBECCA BARRICKLOW

SENIOR VICE PRESIDENT

D: 804.796.0516 | C: 804.399.4762 | rbarricklow@rangecommercial.com

RANGECOMMERCIAL.COM

