



HILLSBORO
TECHNOLOGY CENTER

6,609 RSF NOW AVAILABLE

**STRATEGICALLY LOCATED
CLASS A OFFICE BUILDING**



220
Hillsboro Technology Drive
Deerfield Beach, FL 33441

SKY BUTTERS

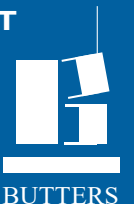
Associate Vice President
T: 954.312.2435
C: 954.464.0402
Sky@butters.com

BRIAN AHEARN

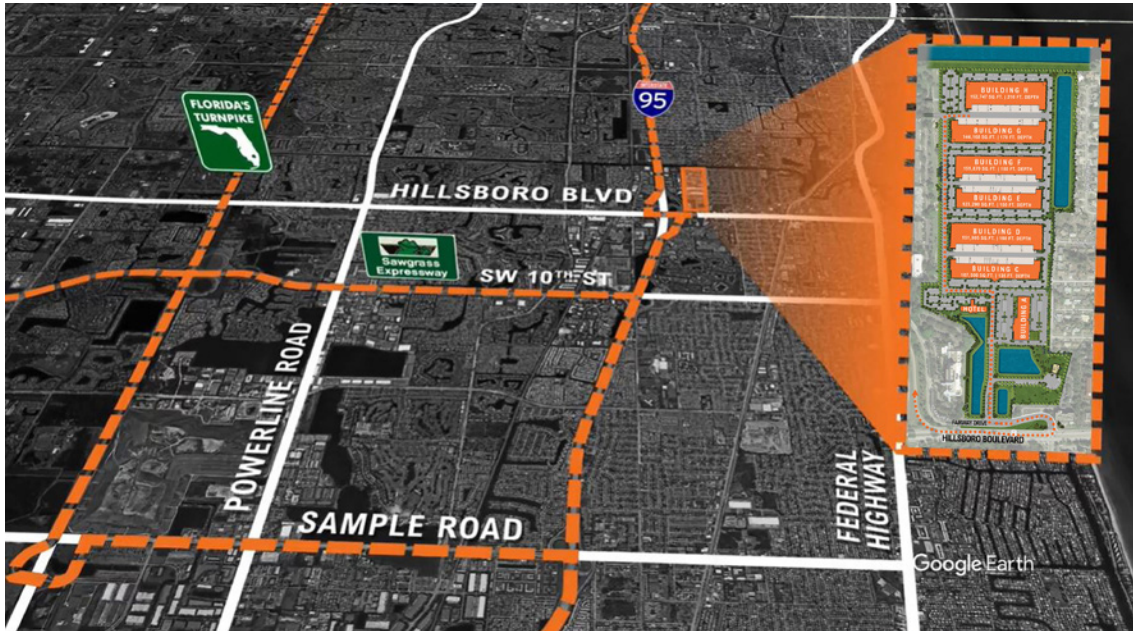
Senior Vice President
T: 954.361.6198
C: 954.937.4540
BAhearn@butters.com

A CO-DEVELOPMENT

BRISTOL GROUP



No warranty or representation is made to the accuracy of the foregoing information.
Terms of sale or lease or availability are subject to change or withdrawal without notice.



CLASS A OFFICE BUILDING **220 Hillsboro Technology Drive**

- Highly visible 87,068 SF of recently delivered Class A Office Space located along Hillsboro Technology Drive
- 6,609 RSF modern office buildout
- Impact glass
- High ceilings and state-of-the-art building design
- Covered parking
- Electric car charging stations
- Impact glass and doors
- Solar street lamps
- ASKING RATE: \$25 NNN
- OPEX: \$12.38 (net of janitorial)

LOCATED IN NORTHERN BROWARD COUNTY'S PREMIER STATE-OF-THE ART BUSINESS PARK

- Immediate access to I-95 North and South providing unparalleled connectivity to the entire Southeast Florida market
- Central location allows businesses to conveniently serve the region
- 20 minutes to Fort Lauderdale International Airport
- 20 minutes to Port Everglades
- 20 minutes to West Palm Beach International Airport
- 45 minutes to Port of Miami and Miami International Airport
- On-site amenities include a daycare center, two hotels, lakes and a public park

OFFICE FLOOR PLAN

AVAILABILITY

MARCH 1, 2025 OCCUPANCY

