

FOR LEASE



# CRESCENT LAKESIDE II

1255 Crescent Green | Cary, NC 27518



CAPITAL  
ASSOCIATES®

# CRESCENT LAKESIDE II

1255 Crescent Green | Cary, NC 27518

**PROPERTY TYPE** Office

**BUILDING SIZE** 146,442 SF

**SPACE AVAILABLE** (August 2026)

**Suite 210** 1,910 SF

**Suite 220** 2,445 SF

Suites 210 and 220 can be leased together or separately

**LEASING RATE** \$30.25/SF

**LEASE TYPE** Full Service

**YEAR BUILT** 2008

**COUNTY** Wake

**LOCATION** Cary, NC

**FLOORS** 4

**PARKING** 772 total parking spaces for Crescent Lakeside I & II



**BRET MULLER**  
919.523.4200  
bmuller@capitalassociates.com

**WES JOHNSON**  
919.422.4853  
wjohnson@capitalassociates.com



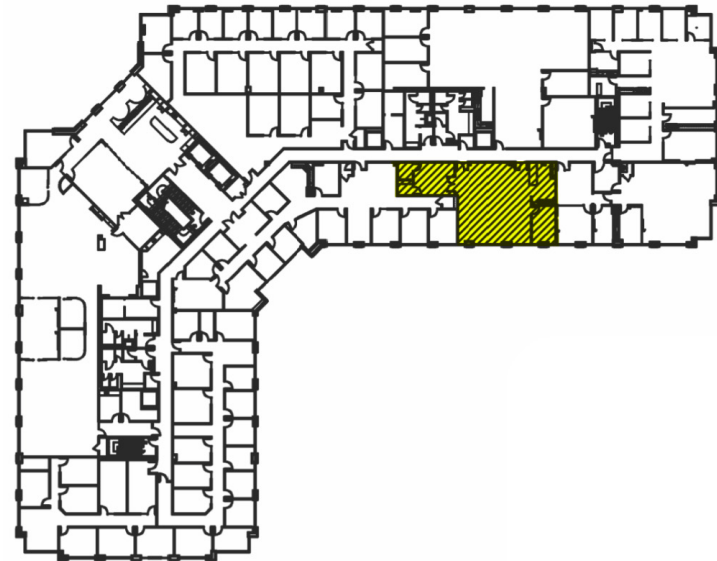
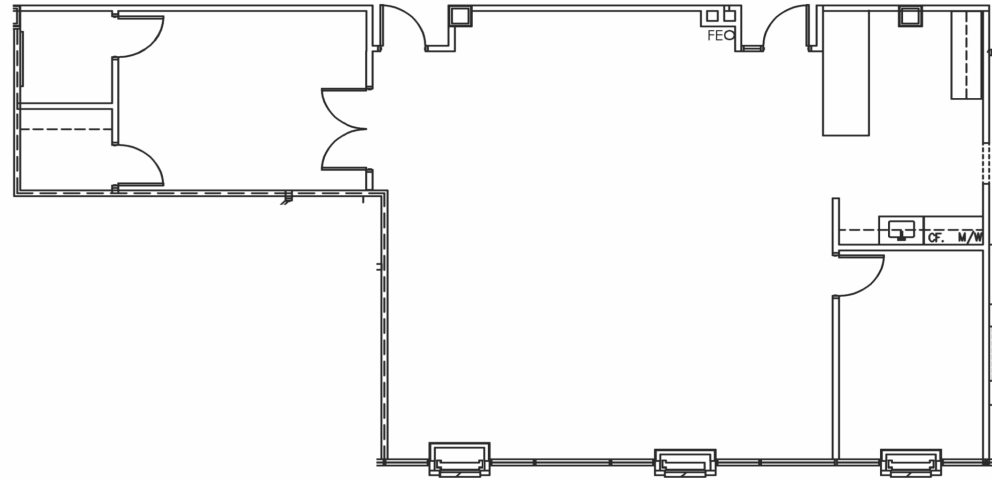
# CRESCENT LAKESIDE II

1255 Crescent Green | Cary, NC 27518

**AVAILABLE**  
August 2026

Second Floor  
Suite 210

1,910 SF



**BRET MULLER**

919.523.4200

[bmuller@capitalassociates.com](mailto:bmuller@capitalassociates.com)

**WES JOHNSON**

919.422.4853

[wjohnson@capitalassociates.com](mailto:wjohnson@capitalassociates.com)



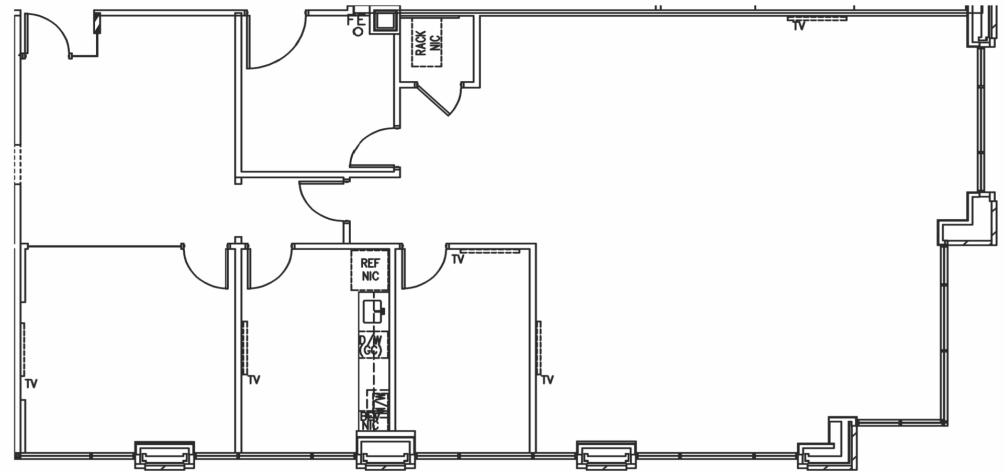
# CRESCENT LAKESIDE II

1255 Crescent Green | Cary, NC 27518

**AVAILABLE**  
August 2026

Second Floor  
Suite 220

2,445 SF



**BRET MULLER**

919.523.4200

[bmuller@capitalassociates.com](mailto:bmuller@capitalassociates.com)

**WES JOHNSON**

919.422.4853

[wjohnson@capitalassociates.com](mailto:wjohnson@capitalassociates.com)



# CRESCENT LAKESIDE II

1255 Crescent Green | Cary, NC 27518

## LOCATION

Nearby amenities include shopping, banking, hotels, restaurants, the area's only Life Time Facility, and housing in all price ranges within close proximity to the site.

## ON SITE AMENITIES

On-site amenities include vending, express mail drop, an on-site first-class workout facility, showers in one set of men's and women's restrooms, shared conference room on the first floor, a beautifully landscaped plaza with outdoor seating, and onsite property management at both buildings.

[CLICK TO WATCH SHARED CONFERENCE ROOM VIDEO TOUR](#)

## Walk Score®



**30**

### CAR DEPENDENT

Most errands require a car.



**26**

### SOME TRANSIT

A few nearby public transportation options.



**54**

### BIKEABLE

Some bike infrastructure.



**CAPITAL ASSOCIATES.**

### BRET MULLER

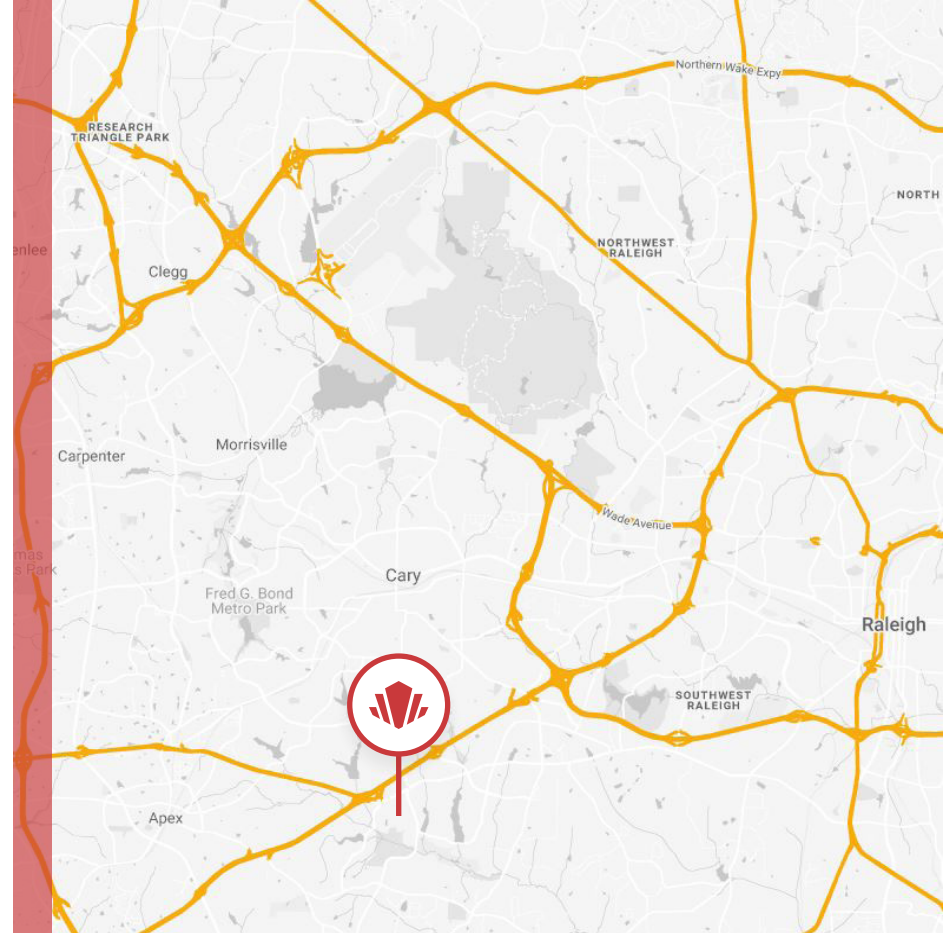
919.523.4200

[bmuller@capitalassociates.com](mailto:bmuller@capitalassociates.com)

### WES JOHNSON

919.422.4853

[wjohnson@capitalassociates.com](mailto:wjohnson@capitalassociates.com)





### DINING

- Chick-Fil-A
- Whole Foods
- Burger King
- Subway
- Tropical Smoothie Cafe

- Shake Shack
- Lucky 32 Southern Kitchen
- Pizza Hut
- Starbucks
- Chicken Salad Chick

### CONVENIENCE

- Lifetime Fitness
- Harris Teeter
- Walmart
- Walgreens

### BANKING

- Bank of America
- Wells Fargo
- PNC Bank
- Chase Bank

# CRESCENT LAKESIDE II

1255 Crescent Green | Cary, NC 27518

## ABOUT

Crescent Lakeside II is a 146,000 SF four-story, brick and glass Class A office building. Outdoor seating is among the beautifully landscaped plaza, and on-site amenities include vending, express mail drop, showers, and a first-class workout facility. The Crescent buildings are located within the highly appealing and successful Crescent multi-use business park in Cary. South of Tryon Road and nestled between Kildaire Farm Road and Regency Parkway, the Crescent community offers shopping, banking, hotels, restaurants, a lifetime fitness facility, and a range of housing options all within a one-mile radius. Easy access to WakeMed Cary Hospital and US Highways 1 and 64 connecting within minutes to Interstates 40, 440, and 540.



**BRET MULLER**

919.523.4200  
bmuller@capitalassociates.com

**WES JOHNSON**

919.422.4853  
wjohnson@capitalassociates.com

