



21905 Fields Store Rd.

PRIME COMMERCIAL REAL ESTATE OPPORTUNITY IN WALLER, TEXAS

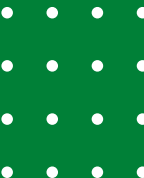
OFFERED AT \$13.00 SQ. FT.



PRESENTED BY:

WALLER COUNTY LAND COMPANY

Established 1985



WALLER COUNTY LAND COMPANY

21905 Fields Store Rd.

PROPERTY OVERVIEW



Prime Retail Development Opportunity in a Rapidly Growing Area

Outstanding retail site positioned in the heart of a booming growth corridor, surrounded by new and planned residential developments. This prime location is ideally suited for a neighborhood retail center designed to serve the daily needs of a rapidly expanding population.

All utilities are readily available, with off-site detention already provided, streamlining the development process. A 282-unit multi-family community is planned for the surrounding 8 acres, delivering a built-in customer base and strong long-term demand.

The property offers excellent accessibility, located just 2 minutes from Hwy 290 and less than 1 minute from Waller ISD elementary, junior high, and high school campuses. With strong visibility, nearby rooftops, and continued growth, this is a rare opportunity to secure a strategic retail location in one of the area's fastest-growing markets.

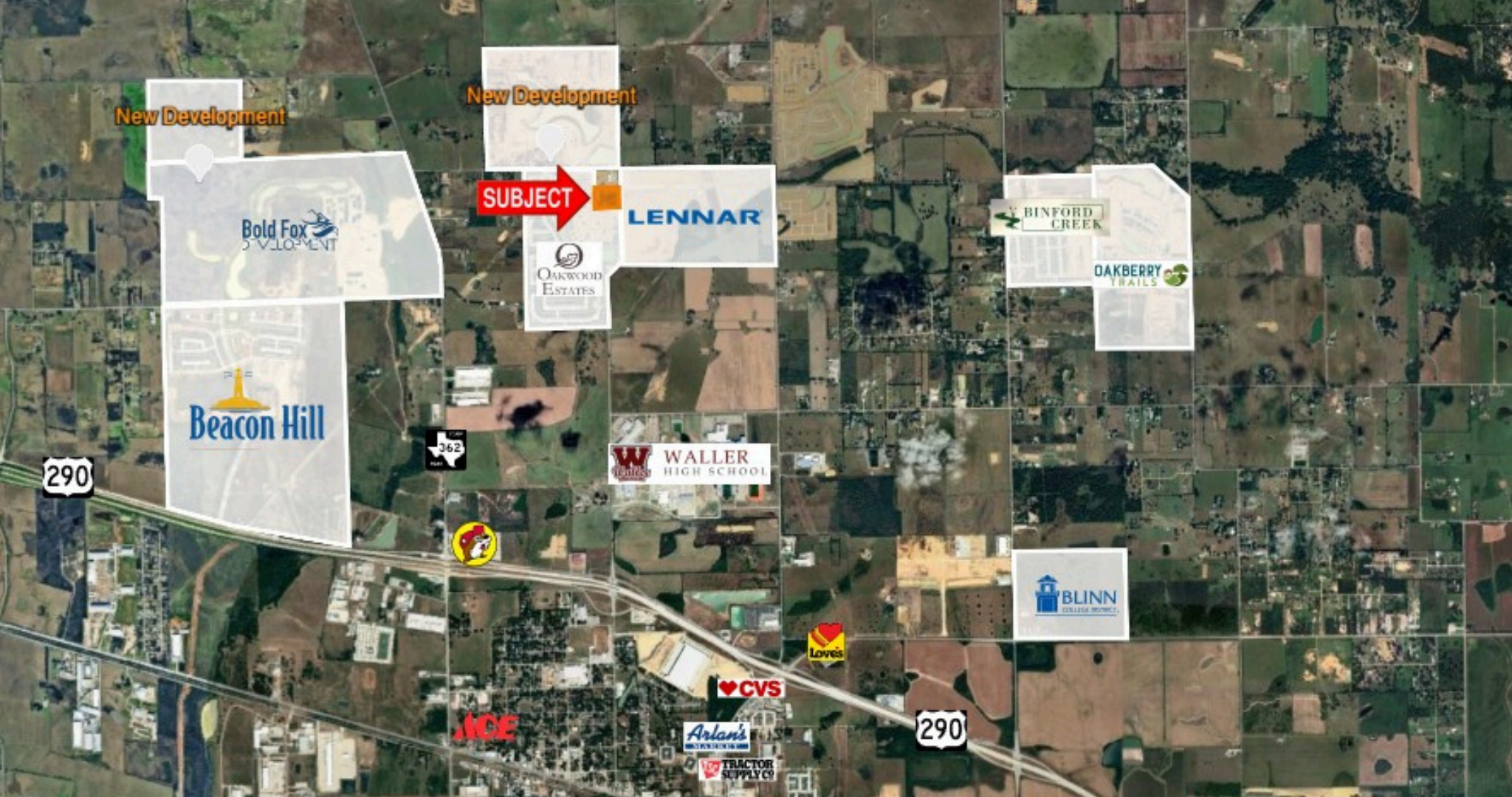
Listing Agent:
Timothy Phelan | 281-723-9656
tphelan@wallercountyland.com



Highlights

- ✓ Prime Location
- ✓ Commercial Property
- ✓ Lots of new development in the area
- ✓ High traffic area
- ✓ Utilities Readily Available
- ✓ High Visibility

Listing Agent:
Timothy Phelan | 281-723-9656 | tphelan@wallercountyland.com



21905 Fields Store Rd., Waller, TX 77484

Listing Agent:

Timothy Phelan | 281-723-9656 | tphelan@wallercountyland.com







PRESENTED BY:

WALLER COUNTY LAND COMPANY

P. O. Box 1274
Waller, TX 77484



CONTACT INFORMATION

We are always available to provide you with the latest information.

Call Us :



936-372-9181

Email :



TPhelan@WallerCountyLand.com

Visit our Website :



www.WallerCountyLand.com

Listing Agent:

Timothy Phelan | 281-723-9656 |
tphelan@wallercountyland.com