

# 850 LINDBERG LANE

PETALUMA | CA

±2,504 RSF OFFICE SPACE AVAILABLE

**\$1.15/PSF - INDUSTRIAL GROSS**

TENANTS PAY CAM, AND A PRO-RATA SHARE OF INCREASES  
OVER A BASE YEAR IN TAXES AND INSURANCE // CAM CHARGES = ±\$.07/SF



EXCLUSIVE AGENTS:

**ALISA BELEW**

415.526.7663

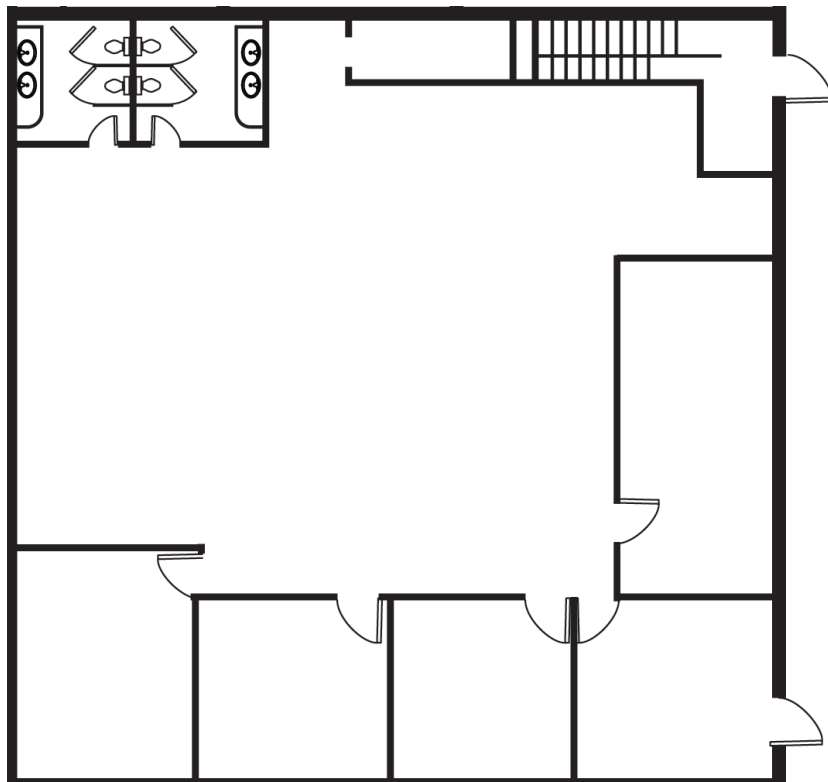
alisa.belew@nmrk.com  
CA DRE #01821371

**RON REINKING**

707.583.8423

ron.reinking@nmrk.com  
CA DRE #00931004

**NEWMARK**



## OFFICE SPACE ±2,504 SF, SUITE A

### SECOND FLOOR

- Corner suite with excellent natural light
- 4 Private offices
- Large conference room
- Private restrooms
- Open work area





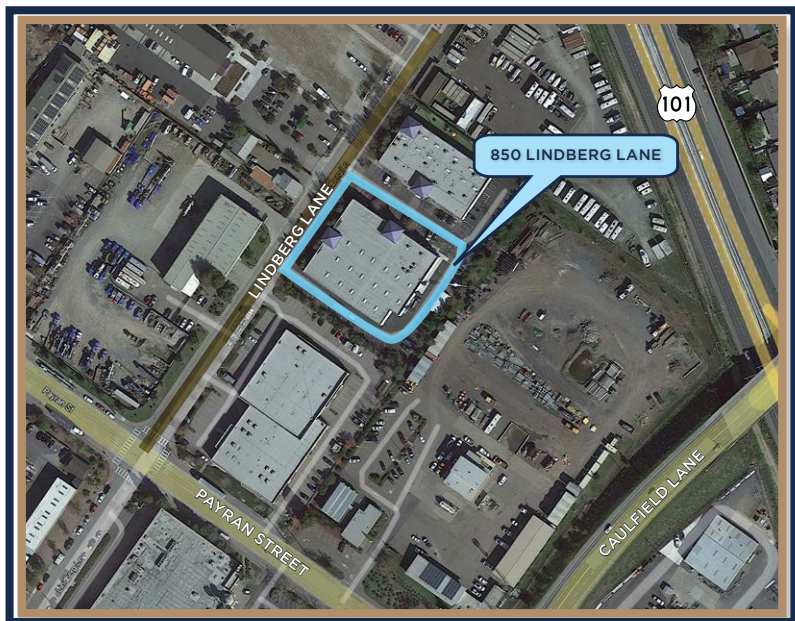
Excellent Distribution Location  
**Near U.S. 101 / Lakeview Highway**  
Intersection



**Convenient I-80 connection**  
via Lakeville Highway and CA 37



Close proximity to  
**amenities & services**



850 LINDBERG LANE, PETALUMA | CA | P 3

NEWMARK



SMART TRAIN =

SMART TRAIN STATIONS =

## SHOPPING & SERVICES

- 1 PETALUMA GATEWAY CENTER
- 2 THE PLAZA NORTH SHOPPING CENTER
- 3 EAST WASHINGTON PLACE
- 4 WASHINGTON SQUARE
- 5 ANNA'S SEAFOOD
- 6 FEDEX OFFICE PRINT & SHIP CENTER
- 7 TRADER JOE'S
- 8 WHOLE FOODS MARKET

## RESTAURANTS & CAFES

- 1 CANTON
- 2 EVEREST INDIAN RESTAURANT
- 3 LUNCHEtte
- 4 MAMA MEL'S BREAD
- 5 NORTH BAY CAFE
- 6 PAPA MURPHY'S | TAKE 'N' BAKE PIZZA
- 7 PETALUMA COFFEE & TEA CO.
- 8 PINK OWL COFFEE
- 9 RIVER FRONT CAFE
- 10 SOL FOOD
- 11 SUBWAY
- 12 IN & OUT BURGER

## FITNESS

- 1 ORANGETHEORY FITNESS
- 2 RENEW YOGA
- 3 THE YOGA POST

## LODGING

- 1 COURTYARD BY MARRIOTT
- 2 HAMPTON INN
- 3 METRO HOTEL & CAFE
- 4 SHERATON SONOMA

**THE PLAZA NORTH SHOPPING CENTER**

...and more!

**WASHINGTON SQUARE SHOPPING CENTER**

...and more!

**EAST WASHINGTON PLACE**

...and more!

**850 LINDBERG LANE**  
PETALUMA, CA

**PETALUMA GATEWAY CENTER**

...and more!

# 850 LINDBERG LANE

PETALUMA | CA

±2,504 RSF OFFICE SPACE  
AVAILABLE



**ALISA BELEW**

415.526.7663

[alisa.belew@nmrk.com](mailto:alisa.belew@nmrk.com)

CA DRE #01821371

**RON REINKING**

707.583.8423

[ron.reinking@nmrk.com](mailto:ron.reinking@nmrk.com)

CA DRE #00931004

1101 Fifth Avenue, Suite 370 San Rafael, CA 94901

**NEWMARK**

The distributor of this communication is performing acts for which a real estate license is required. The information contained herein has been obtained from sources deemed reliable but has not been verified and no guarantee, warranty or representation, either express or implied, is made with respect to such information. Terms of sale or lease and availability are subject to change or withdrawal without notice. Last modified: April 30, 2025 11:04 AM