



# FOR LEASE

95 EVERGREEN DRIVE  
PORTLAND, ME 04103



- 15,612± SF industrial/office building
- Located in the heart of Portland's industrial neighborhood with easy access to I-95
- Building includes one 14' x 14' drive-in door and three 8' x 10' loading docks.
- Insulated slab in former freezer area (24' x 48')
- Located in the favorable I-M (Medium-Impact Industrial) zone, allowing a number of uses

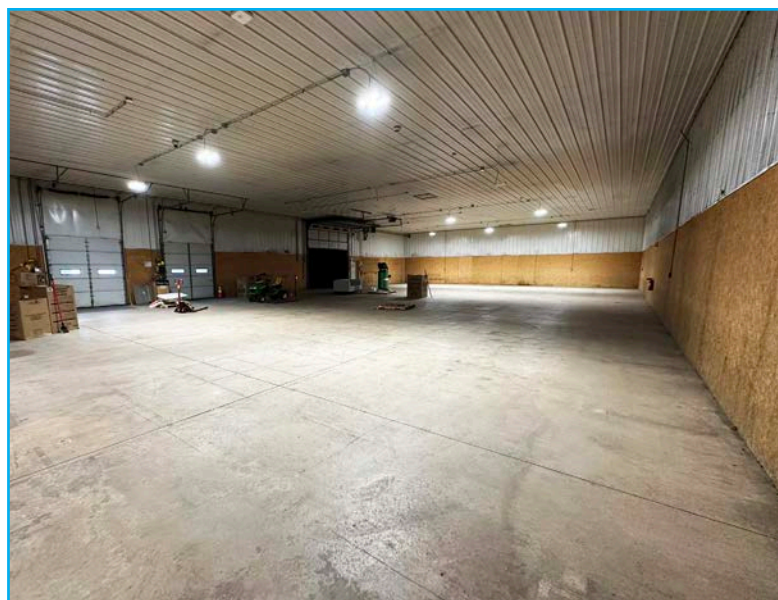
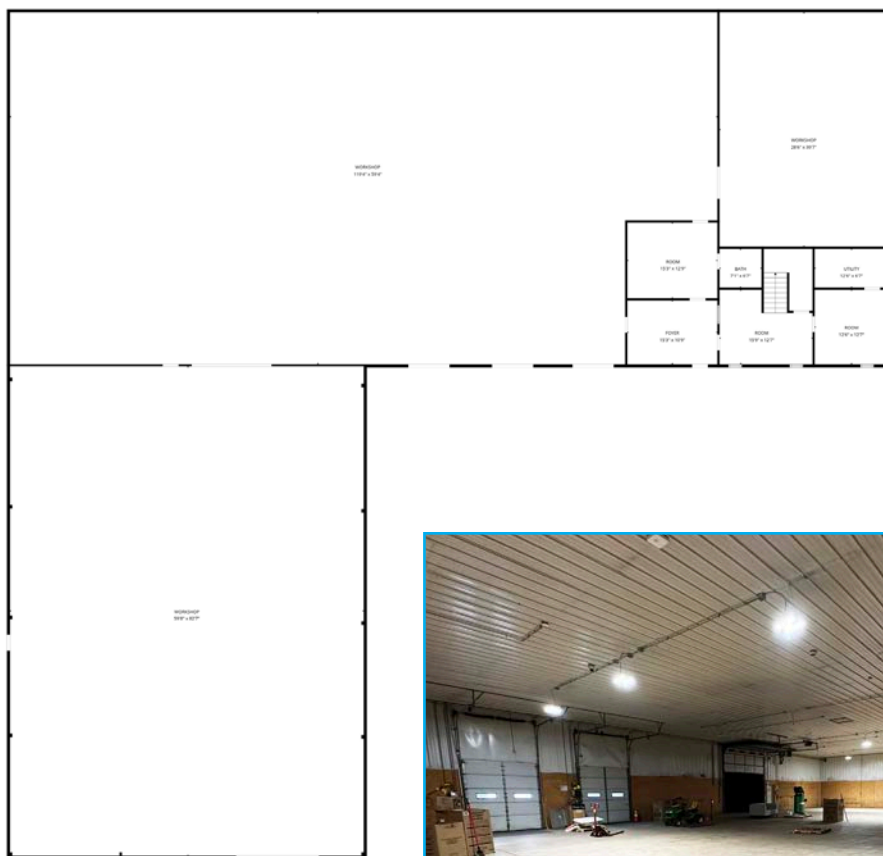
**FREESTANDING  
WAREHOUSE BUILDING  
FOR LEASE**

## PROPERTY HIGHLIGHTS

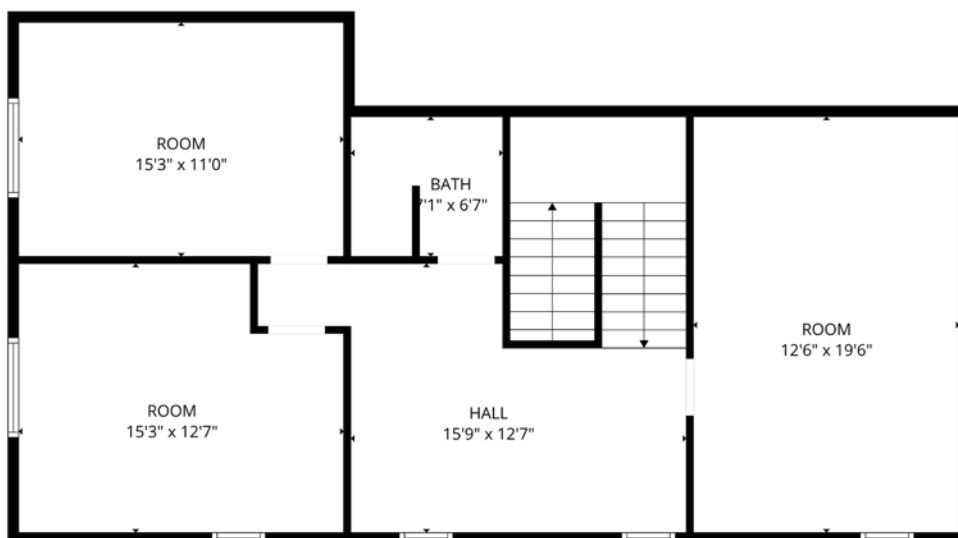
OWNER OF RECORD	Deerfield 165 State, LLC
BOOK / PAGE	38013 / 277
ASSESSOR'S REF	329-A-6
BUILDING SIZE	15,612± SF
SPACE AVAILABLE	15,612± SF
YEAR BUILT	1989; renovated 1991
CONSTRUCTION	Metal with insulated walls and ceilings
ROOF	Standing seam metal and rubber
LAND SIZE	1.88± AC
ZONING	I-M (Medium-Impact Industrial)
HEATING/COOLING	Unit heaters in garage, electric baseboard in office, HVAC in office area
UTILITIES	Public water and sewer
POWER	400 Amp, 3-Phase
CLEAR HEIGHT	Ranges from 15'-6" to 22'
OVERHEAD DOORS	One (1), 14' x 14'
DOCK HIGH DOORS	Three (3), 8' x 10'
PARKING	11 parking spaces, exclusive on-site
LEASE RATE	\$11.50/SF NNN
NNN EXPENSES	\$2.74/SF
AVAILABILITY	May 1, 2026



## FIRST FLOOR PLAN



## SECOND FLOOR PLAN



**FOR LEASE** 95 EVERGREEN DRIVE  
PORTLAND, ME 04103



## CONTACT US



**DREW SIGFRIDSON,**  
**SIOR**

Senior Partner  
207.553.1705 D  
207.831.5838 C  
dsigfridson@boulos.com



©2026 The Boulos Company, Inc. All rights reserved. This information has been obtained from sources believed reliable but has not been verified for accuracy or completeness. You should conduct a careful, independent investigation of the property and verify all information. Any reliance on this information is solely at your own risk. The Boulos Company and The Boulos Company logo are service marks of The Boulos Company, Inc. All other marks displayed on this document are the property of their respective owners. Photos herein are the property of their respective owners. Use of these images without the express written consent of the owner is prohibited.