

DIERBERGS CRESTWOOD CROSSING



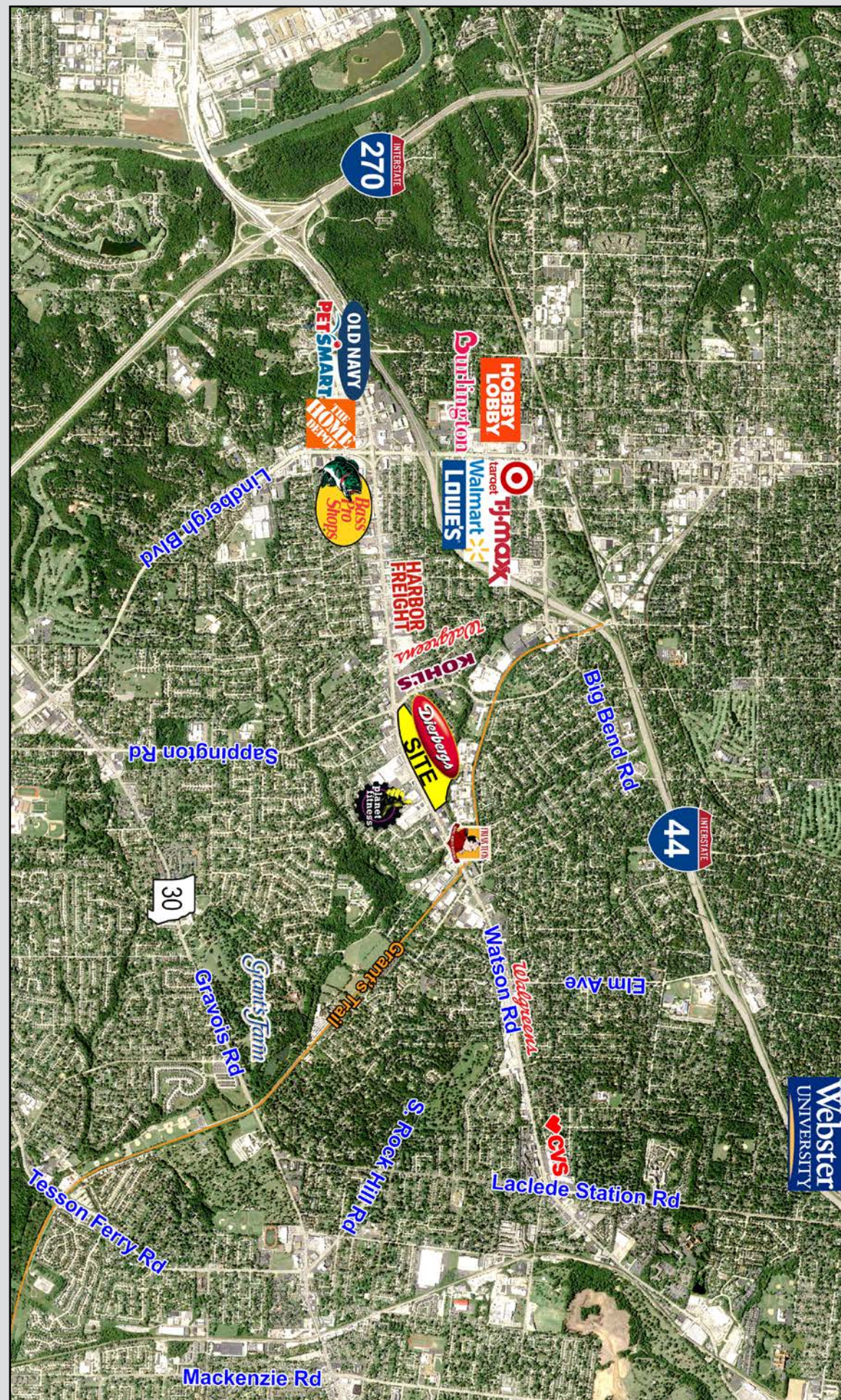
A  Development

For More Information Contact:



Weller Meyer
 314-492-5007
 wmeyer@caplaco.com
 11850 Studt Avenue
 St. Louis, Missouri 63141

www.caplaco.com



11850 Studt Avenue
 P.O. Box 419121
 St. Louis, Missouri 63141
 Telephone: (314)991-8900

The information contained herein was obtained from sources deemed reliable, however, Capitol Realty Group makes no guarantees as to the completeness or accuracy thereof. This information is subject to error, omission, change in price or conditions, prior sale or lease, or withdrawal without notice.

| DEMOGRAPHICS | 1 Mile | 3 Mile | 5 Mile |
|----------------------------|-----------|-----------|-----------|
| 2024 Estimated Population | 10,326 | 89,429 | 215,779 |
| 2024 Estimated Households | 4,356 | 37,621 | 93,144 |
| 2024 Avg. Household Income | \$139,410 | \$131,297 | \$121,107 |



Weller Meyer

314-492-5007

wmeyer@caplaco.com



11850 Studt Avenue
 Saint Louis, MO 63141
 314-991-8900 Phone
 314-991-2474 Fax

| Space | Tenant | Size (sf) | Space | Tenant | Size (sf) |
|-------|------------------------------|-----------|-------|-------------------------------------|-----------|
| 1 | Retail Available (Divisible) | 6,400 | 8 | Club Pilates | 2,000 |
| 2 | SOHO Nail Salon | 3,200 | 9 | Available with Outdoor Patio | 3,234 |
| 3 | Crumbl Cookies | 1,600 | 10 | Andy's Frozen Custard | 2,499 |
| 4 | Roosters Men's Grooming | 1,813 | 11 | Available (Divisible) | 5,109 |
| 5 | Dierbergs | 72,528 | 12 | Panera Bread | 2,435 |
| 6 | Mercy-GoHealth Urgent Care | 2,755 | 13 | Retail Available | 2,565 |
| 7 | Eye See Vision Center | 2,220 | | | |



The information contained herein was obtained from sources deemed reliable, however, Capitol Realty Group makes no guarantees as to the completeness or accuracy thereof. This information is subject to error, omission, change in price or conditions, prior sale or lease, or withdrawal without notice.

Updated 09/18/2024